



BlackBerry Curve 8310 LCD Screen Replacement

This guide will show you how to remove the LCD screen from your BlackBerry Curve 8310.

Written By: Mandy Chan





TOOLS:

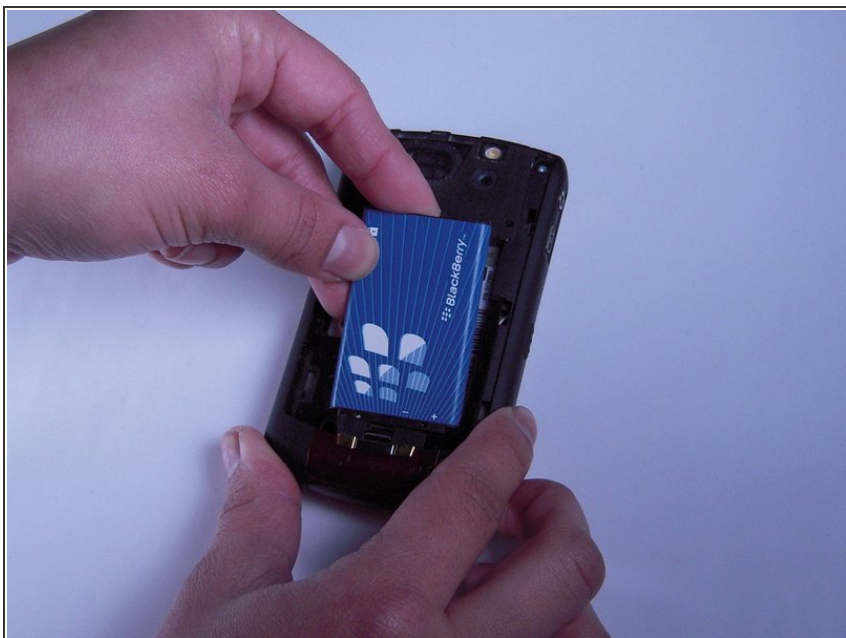
- [iFixit Opening Tools](#) (1)
 - [T5 Torx Screwdriver](#) (1)
 - [Tweezers](#) (1)
 - [T6 Torx Screwdriver](#) (1)
-

Step 1 — Battery



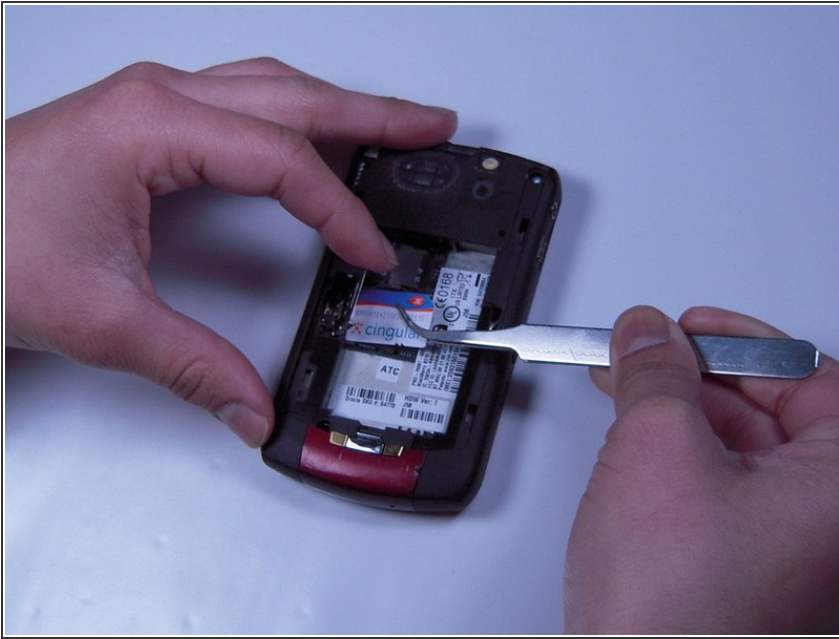
- Press down on the battery release button and slide the back cover up with your thumb.

Step 2



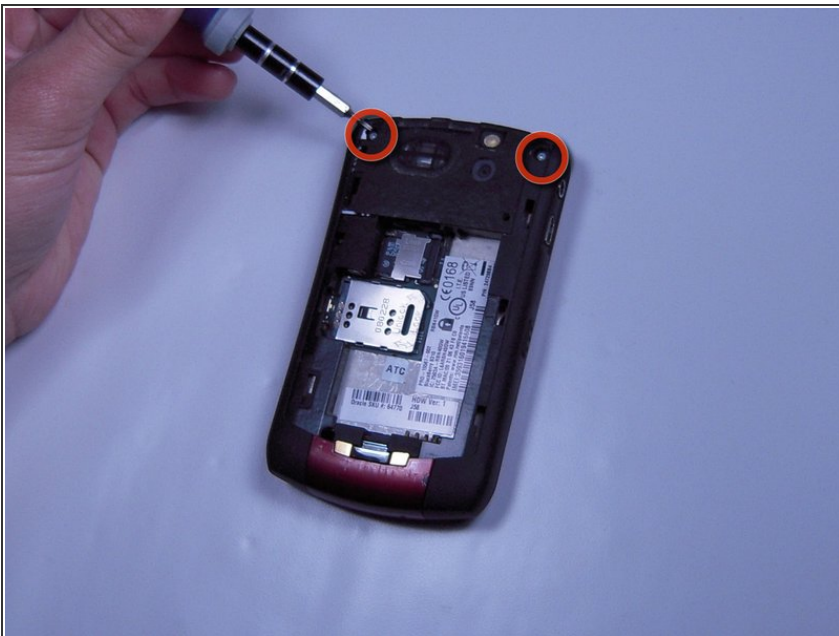
- Pry from the top of the battery to pull it out.

Step 3 — Lens



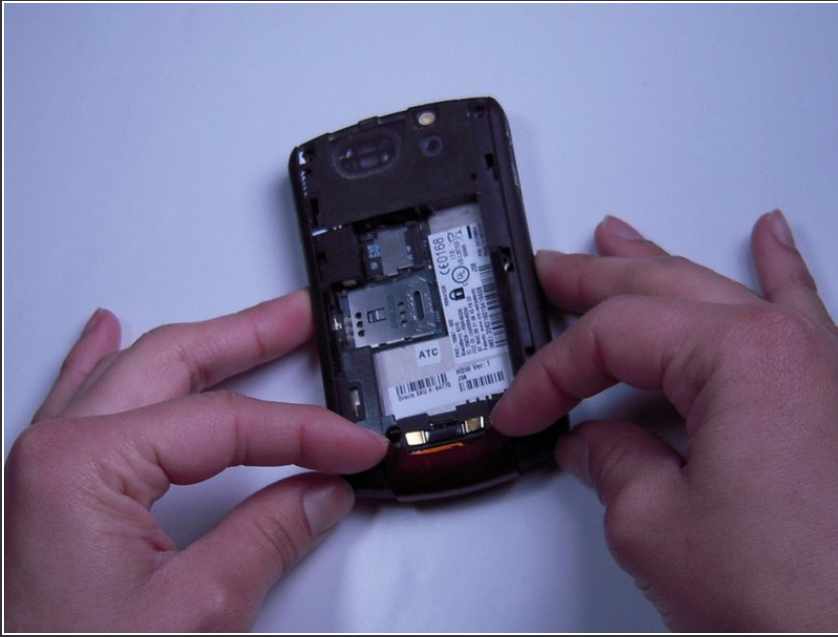
- Slide the metal sim card cover to the unlock position.
- Remove the sim card.
- ⓘ The arrows on the sim card enclosure indicate the lock and unlock positions.

Step 4



- Remove the two T5 Torx screws circled at the top of the phone.
- ⓘ The T5 Torx screws may be covered by a white sticker.

Step 5



- Remove the red cover at the bottom of the phone.
- ⓘ You may have to work a spudger underneath to release the plastic clips.

Step 6



⚠ Be careful not to damage the front cover's plastic clips while trying to separate it from the phone.

- Use a spudger to pry the front cover away from the side panels.
- Work the spudger around the entire phone until the front cover is free.

Step 7 — Keyboard



- Remove the keyboard.

Step 8 — Screen Housing



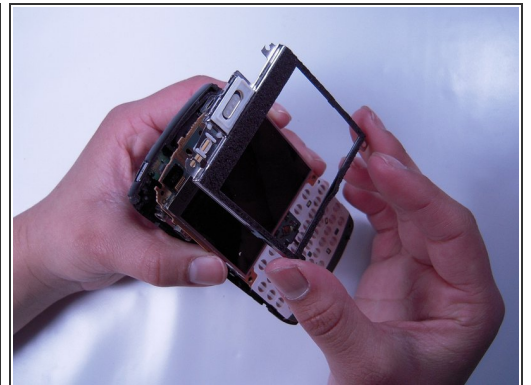
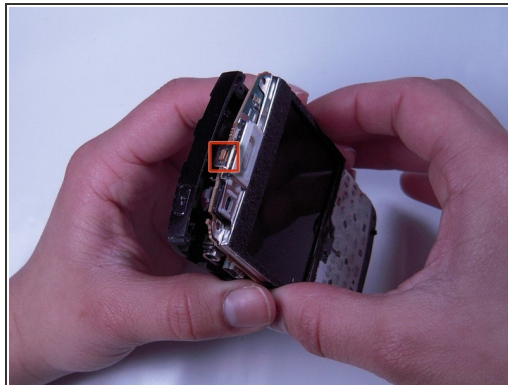
- Remove the four T6 Torx screws located on the corners of the keyboard frame.

Step 9




- Now remove the left and right side panels.

Step 10

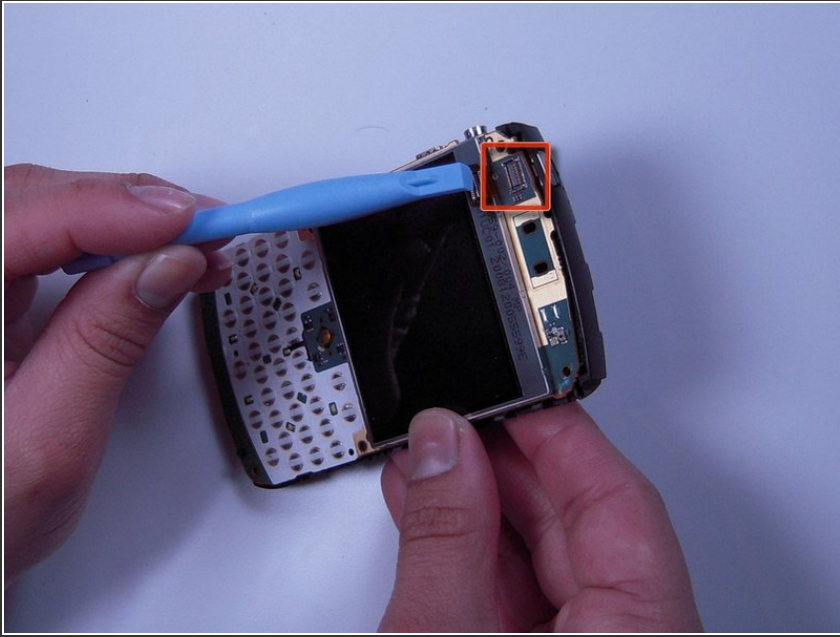


- Remove the keyboard frame.

 Be sure to unhook the screen housing from the motherboard before continuing. Refer to the square indicated in the second picture.

- Now remove the screen housing.

Step 11 — LCD Screen



- Unplug the ribbon cable from the board.
- ⓘ The ribbon cable is located at the top left of the phone above the screen.

Step 12



- Insert tool between LCD screen and board.
- Pry LCD screen from board.

To reassemble your device, follow these instructions in reverse order.