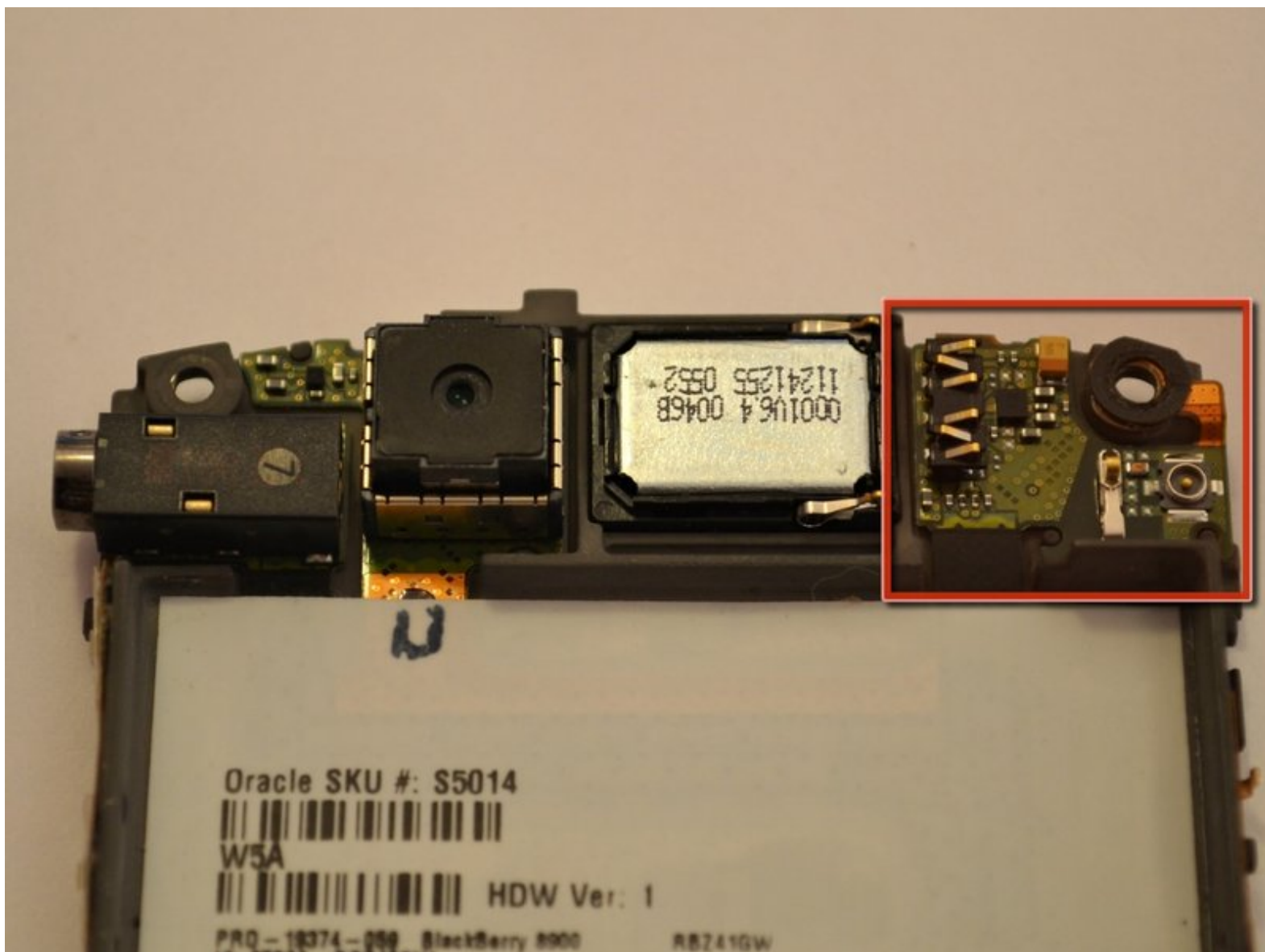




# BlackBerry Curve 8900 Antenna Replacement

If your blackberry's antenna is broken, this guide can help you replace it.

Written By: Johnny Tran





## TOOLS:

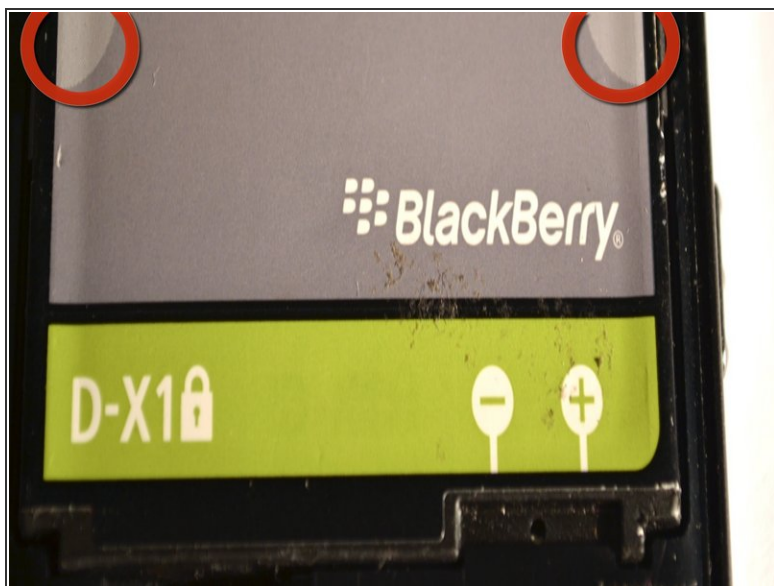
- [T6 Torx Screwdriver](#) (1)
  - [iFixit Opening Tools](#) (1)
-

## Step 1 — Battery



- Pry off the back and separate it from the front of the phone case. You will see the battery once the cover is removed.

## Step 2



- On both sides of the battery, there is a lighter grey half-circle. This is the best place to use your fingers to gently lift the battery free of the housing.

## Step 3 — Motherboard



- Using a small plastic opening tool, remove the lower rear cover.

## Step 4



- Remove six screws from the midframe of the device.

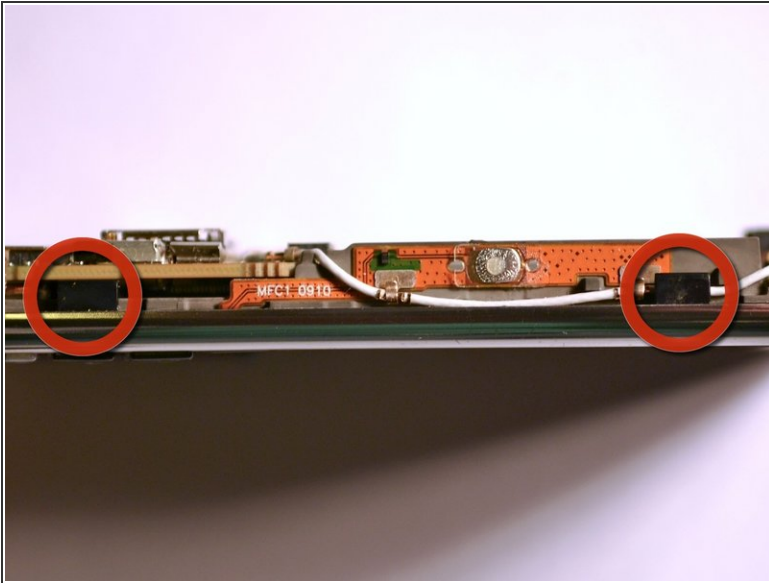


## Step 5



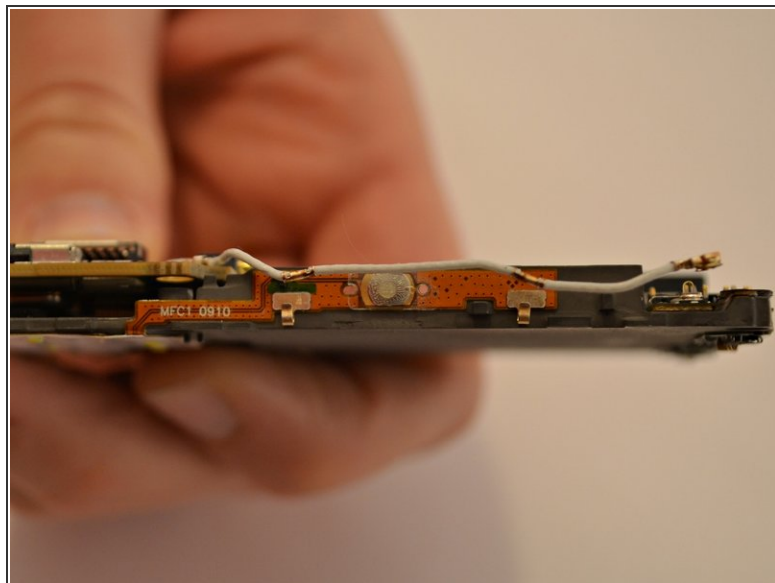
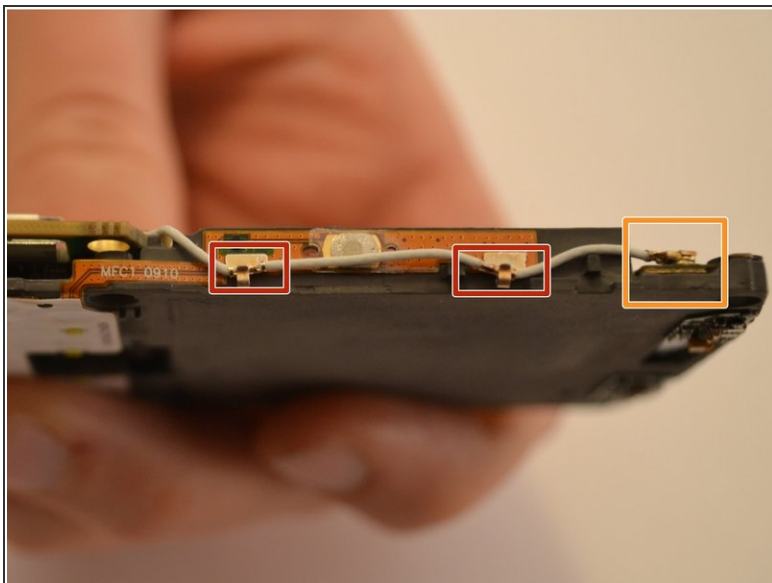
- Remove the midframe from the phone.

## Step 6



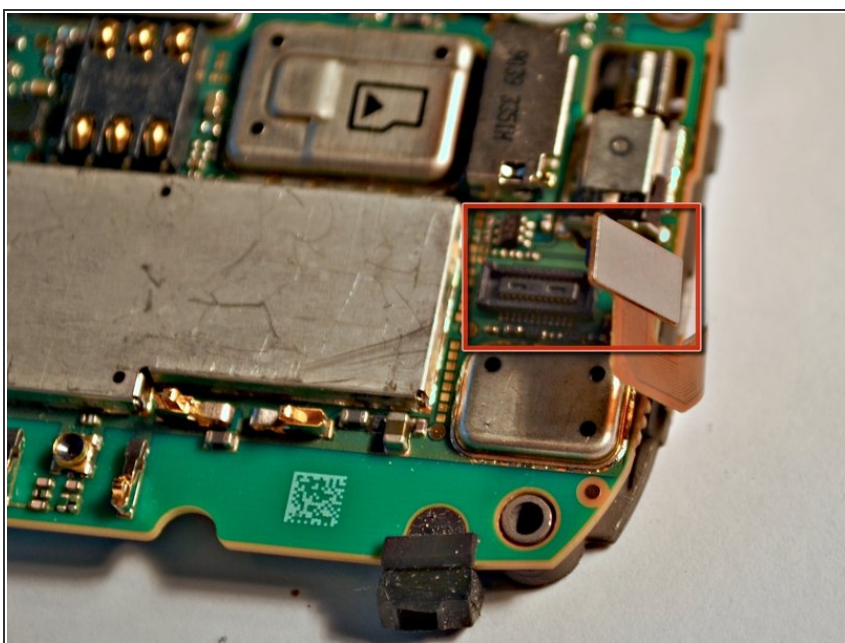
- Gently pry the back the plastic tabs that secure the motherboard to the case.
  - Slowly work your way around the case until the tabs until the motherboard comes free.
  - Remove the motherboard.
- ⓘ The keypad and navigation ball may become loose and fall away from the motherboard.

## Step 7



- Carefully detach the antenna from the two clips on the side of the motherboard.
- Carefully disconnect the antenna from the motherboard.

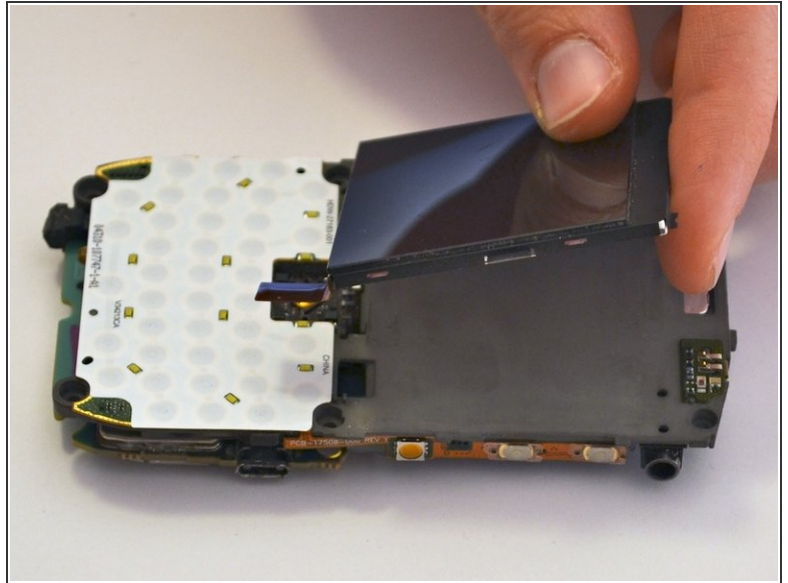
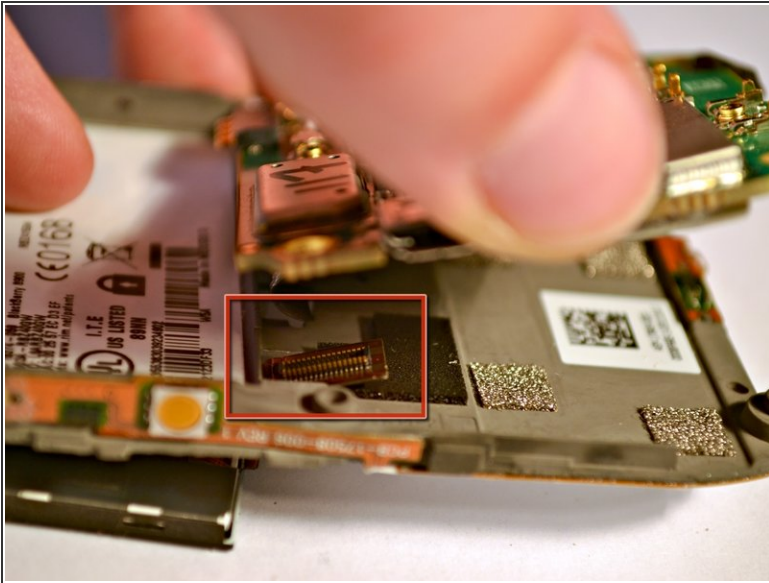
## Step 8



- Carefully disconnect the ribbon cable on the bottom right of the motherboard.

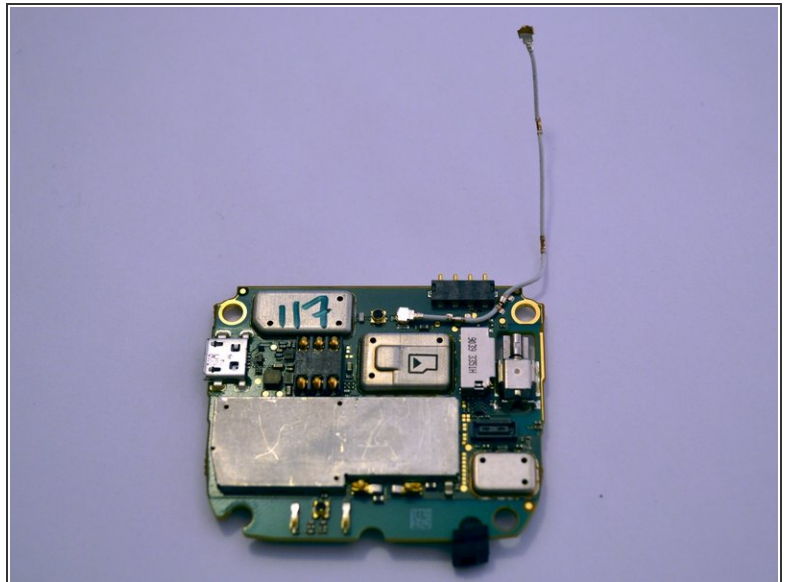
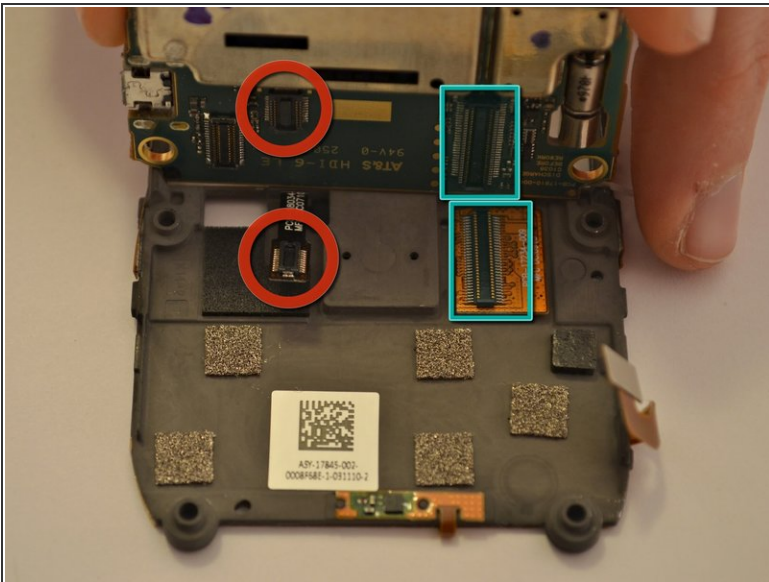


## Step 9



- Remove the screen so that it does not get damaged.

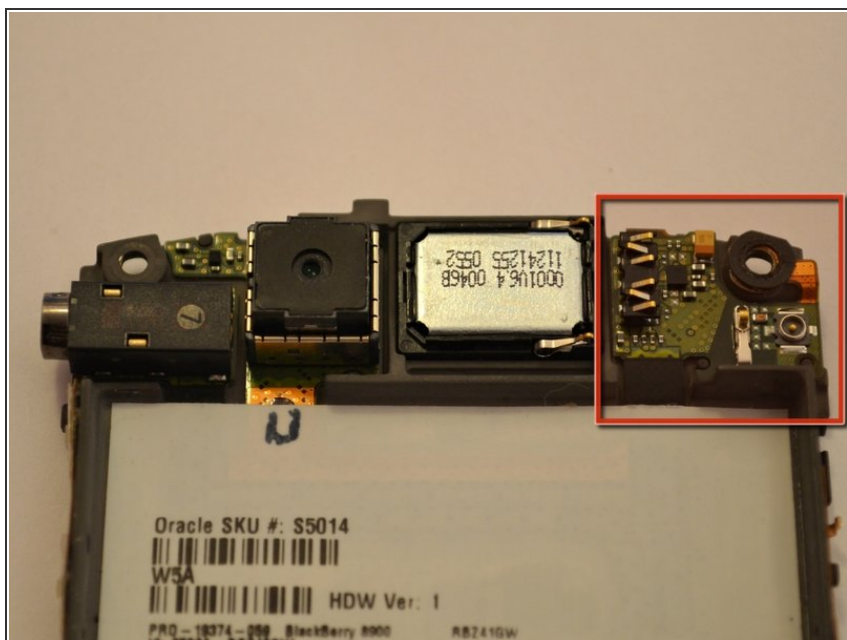
## Step 10



- Lift the up motherboard from the bottom edge to reveal to ribbon cables.
- Carefully disconnect the two ribbon cables connecting the motherboard and display.
- Remove the motherboard.



## Step 11 — Antenna



- Replace the entire center piece of the case to replace the antenna.

To reassemble your device, follow these instructions in reverse order.