



BlackBerry Curve 8900 Case Replacement

If the Blackberry phone case is cracked or broken and needs to be replaced.

Written By: Renae Bishop



INTRODUCTION

Your work area should be clean, lint-free, and with adequate lighting to visualize small print or parts.

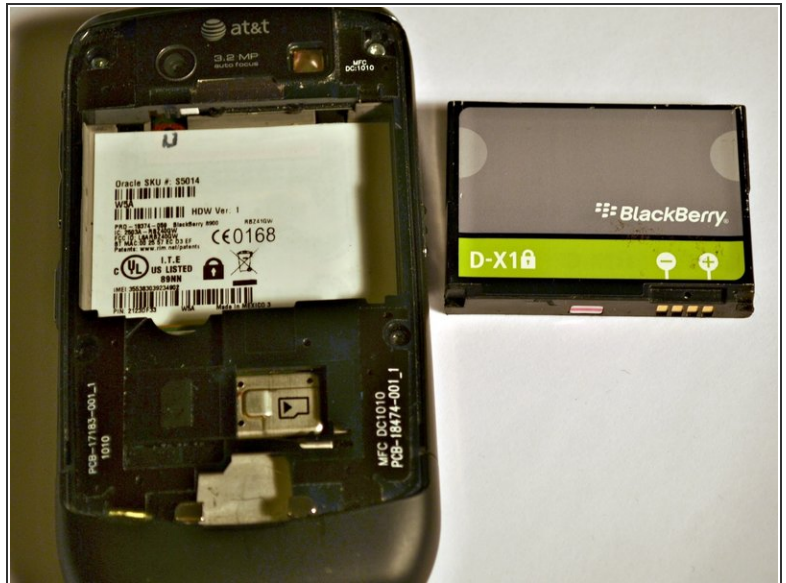
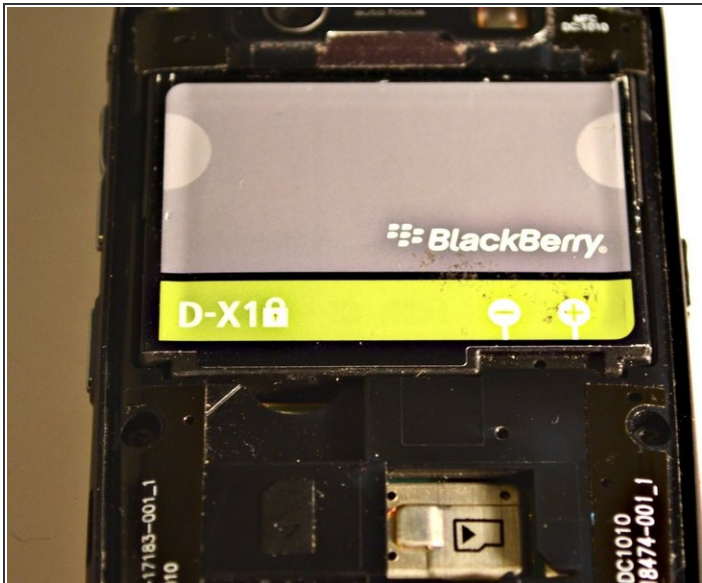
The keypad and navigation ball may become loose and fall away from the motherboard, use caution so these items are not lost or damaged.



TOOLS:

- [T6 Torx Screwdriver](#) (1)
 - [iFixit Opening Tools](#) (1)
-

Step 1 — Removing the Case



- Remove the rear cover from the phone.
- Remove the battery.

Step 2 — Remove the Rear Cover



- Using a small plastic opening tool, remove the lower rear cover.

Step 3 — Unscrew the Midframe



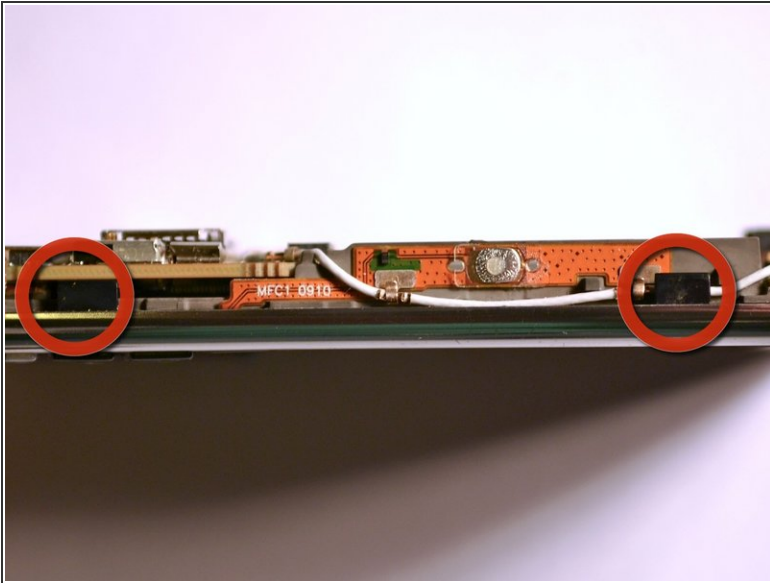
- Remove the six screws from the midframe of the device.
- ✦ Be careful not to damage the screws while removing them.

Step 4 — Remove the Midframe



- Remove the midframe from the phone.

Step 5 — Remove the Motherboard



- Gently pry the back the plastic tabs that secure the motherboard to the case.
 - Slowly work your way around the case with the tabs until the motherboard comes free.
 - Remove the motherboard.
- ⓘ The keypad and navigation ball may become loose and fall away from the motherboard.

Use the new case and reassemble the phone by doing the instructions in reverse order.