



BlackBerry Curve 8900 Keypad Replacement

The Blackberry keypad is not working or malfunctioning and needs to be replaced.

Written By: Renae Bishop



INTRODUCTION

Replacing a defective or faulty keyboard on a BlackBerry Curve 8900.



TOOLS:

- [T6 Torx Screwdriver](#) (1)
 - [iFixit Opening Tools](#) (1)
-

Step 1 — Remove the battery



- Remove the back cover and battery.

Step 2 — Remove the protective cover



- 4 screws should be visible. Pry off lower portion of the back to reveal all 6 screws.

Step 3 — Remove the screws from the midframe



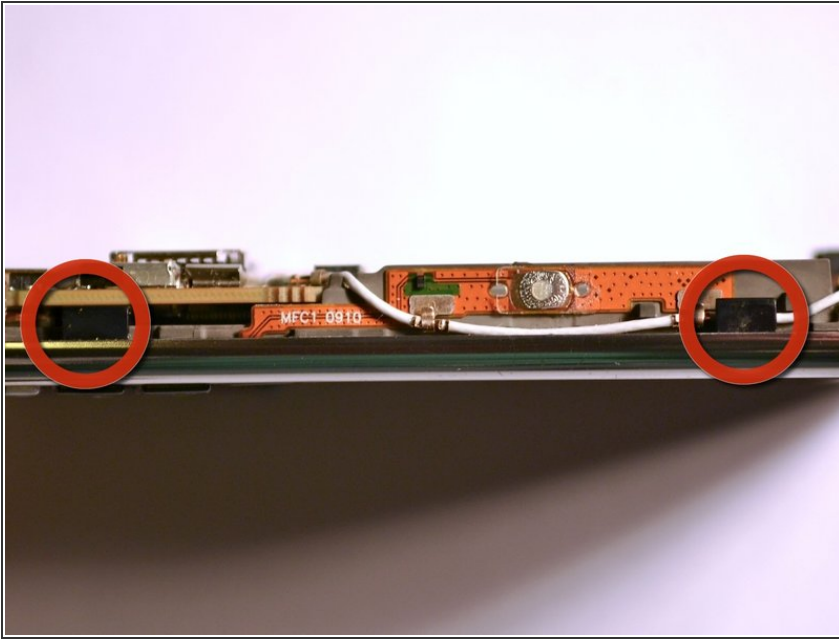
- Remove all six T6 screws from the midframe.

Step 4 — Split apart the device



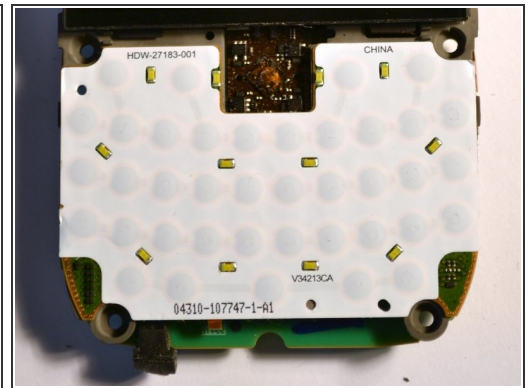
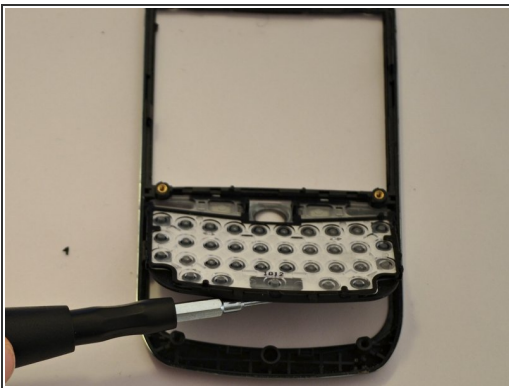
- Separate the midframe from the rest of the device.

Step 5 — Remove the motherboard



- Gently pry the back the plastic tabs that secure the motherboard to the case.
- Slowly work your way around the case until the tabs until the motherboard comes free.
- Remove the motherboard.
- ⓘ The keypad and navigation ball may become loose and fall away from the motherboard.

Step 6 — Remove the keypad



- Lift the keypad from the motherboard.
- ✦ When replacing the keypad, be sure that the navigation ball is in the original position.

To reassemble your device, follow these instructions in reverse order.