



BlackBerry Curve 8900 Screen Replacement

How to replace a BlackBerry Curve 8900 screen.

Written By: Renae Bishop



INTRODUCTION

Work area should be lint free, clean and well lit.



TOOLS:

- [T6 Torx Screwdriver](#) (1)
 - [iFixit Opening Tools](#) (1)
-

Step 1 — Screen



- Open the rear panel to expose the battery and the chassis assembly. Remove the battery.

Step 2



- Use a small, non-marring plastic opening tool to remove the lower-rear cover. (Credit cards and guitar picks work great.)

Step 3



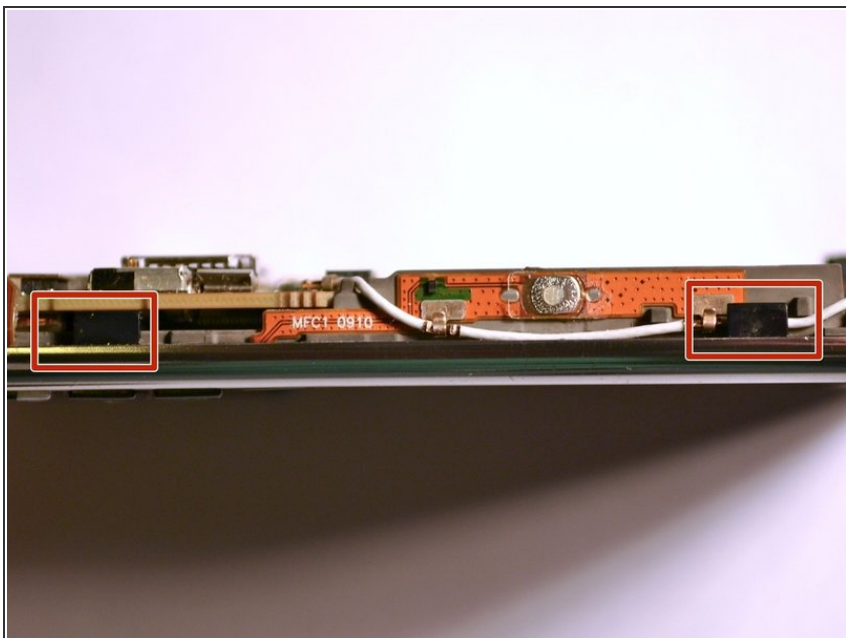
- Use a T6 Torx screwdriver to loosen and remove the six screws from the chassis as shown.
- Flip the phone over to the front and remove the plastic bezel.

Step 4



- Remove the midframe from the back of the phone, which should now be free after removing the screws. The green motherboard should now be exposed.

Step 5



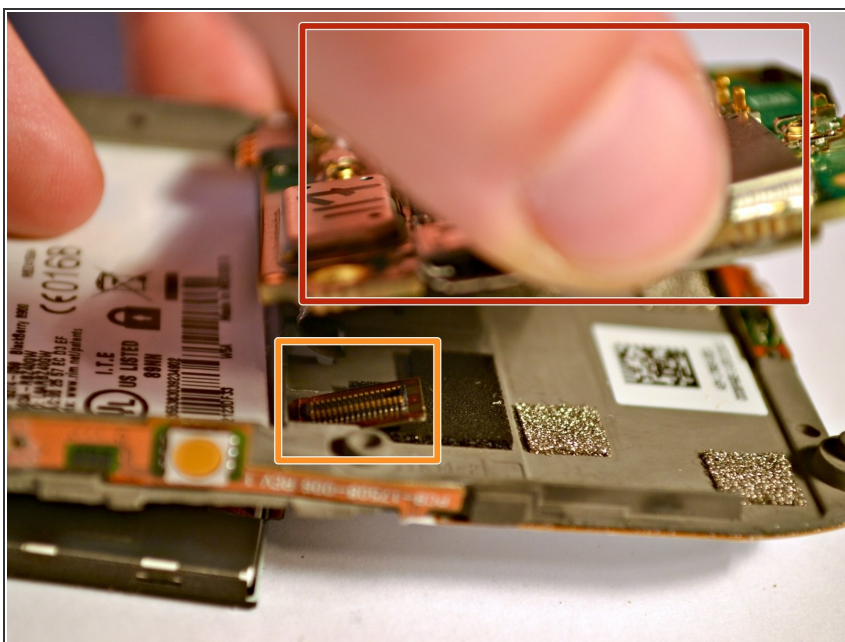
- Remove the front-cover by carefully prying the side release tabs, located on the side of the phone.

Step 6



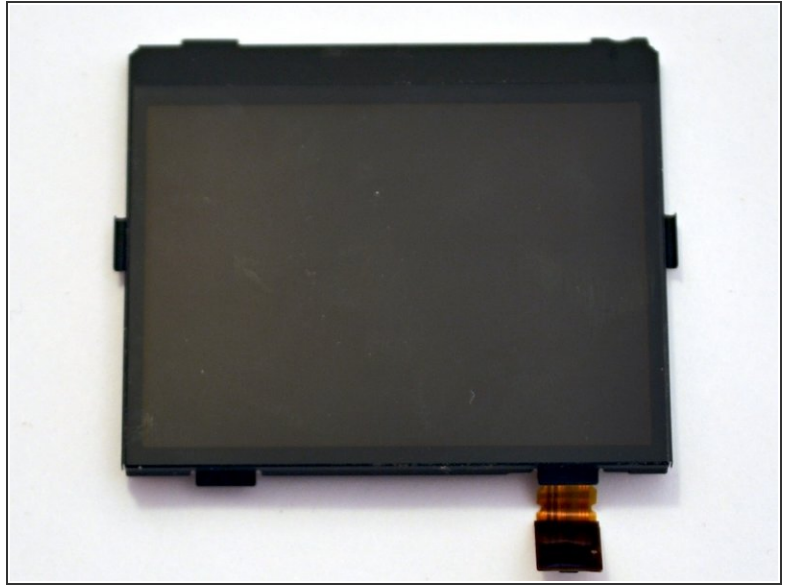
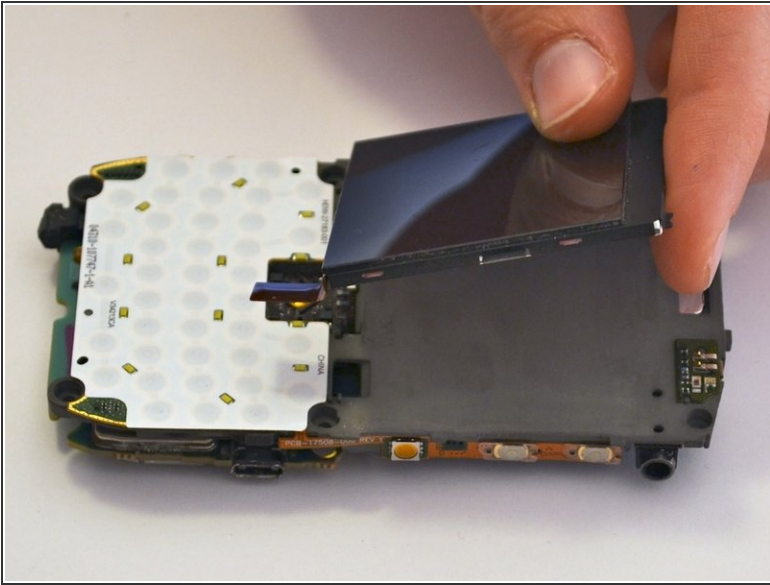
- Gently pry the side release tabs to lift the flexing keypad from the frame.
- ⓘ The navigation ball may come loose at this point. Set it aside with the keypad for reassembly.

Step 7



- Gently lift the motherboard.
- Locate the screen's ribbon cable underneath the motherboard, and detach it from the phone.

Step 8



- Carefully pry at the sides of the screen until the display assembly is free. Remove the display from the motherboard unit.

To reassemble your device, follow these instructions in reverse order.