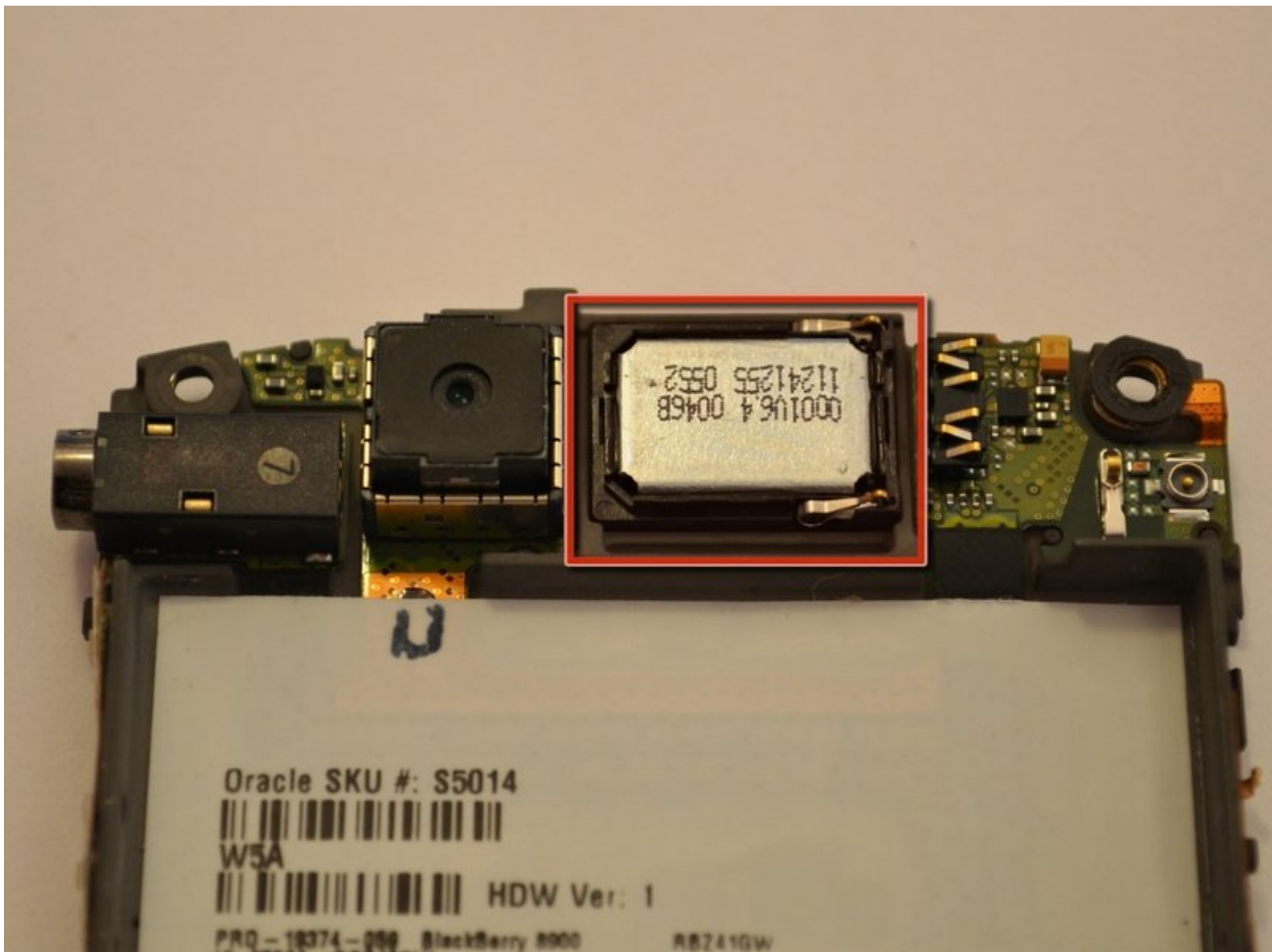




BlackBerry Curve 8900 Speaker Replacement

Replace the speaker on a Blackberry Curve.

Written By: Johnny Tran



INTRODUCTION

This will guide you on how to disassemble your blackberry curve to replace the broken speaker with a new speaker.



TOOLS:

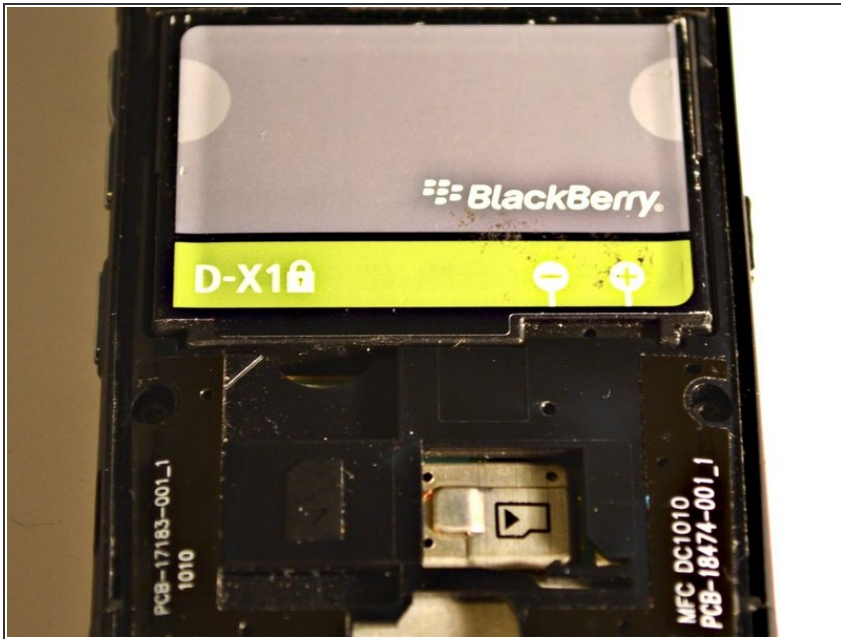
- [T6 Torx Screwdriver](#) (1)
- [iFixit Opening Tools](#) (1)



PARTS:

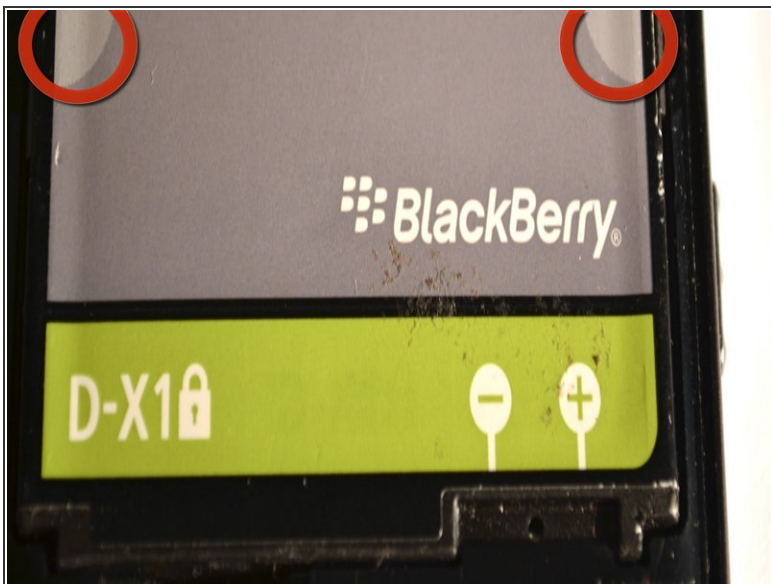
- [BlackBerry Curve Speaker Module](#) (1)

Step 1 — Battery



- Pry off the back and separate it from the front of the phone case. You will see the battery once the cover is removed.

Step 2



- On both sides of the battery, there is a lighter grey half-circle. This is the best place to use your fingers to gently lift the battery free of the housing.

Step 3 — Motherboard



- Using a small plastic opening tool, remove the lower rear cover.

Step 4



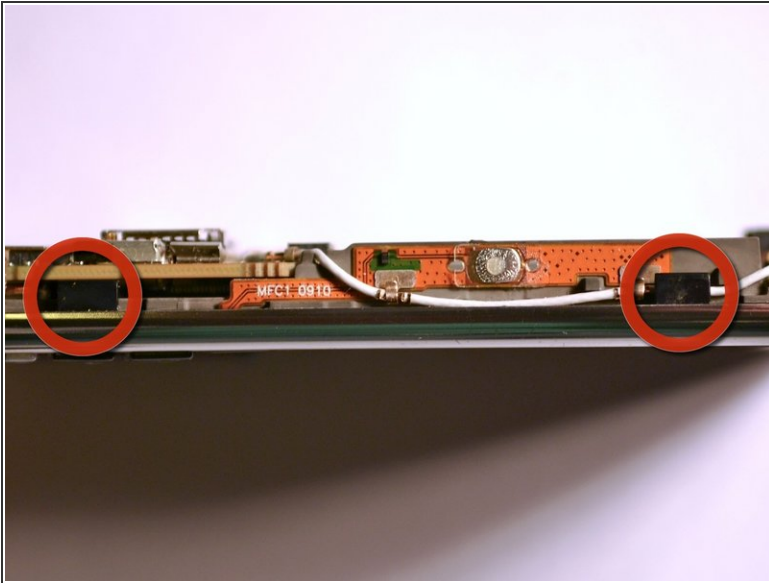
- Remove six screws from the midframe of the device.

Step 5



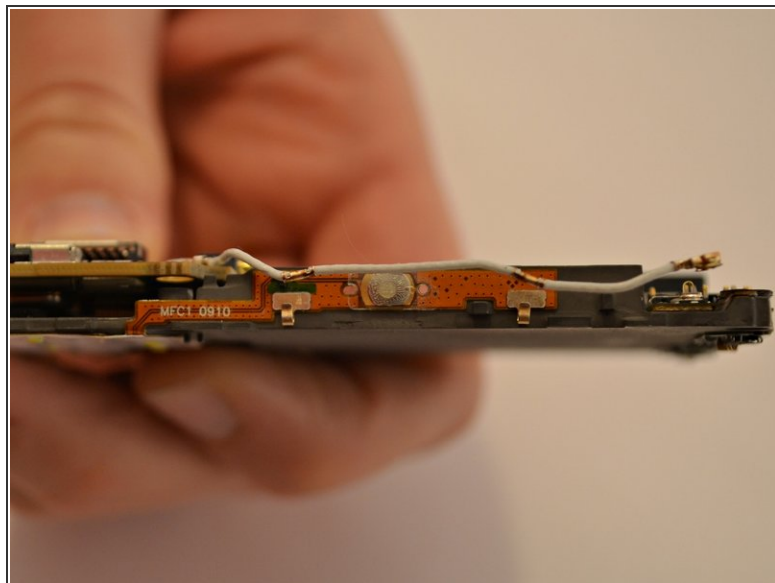
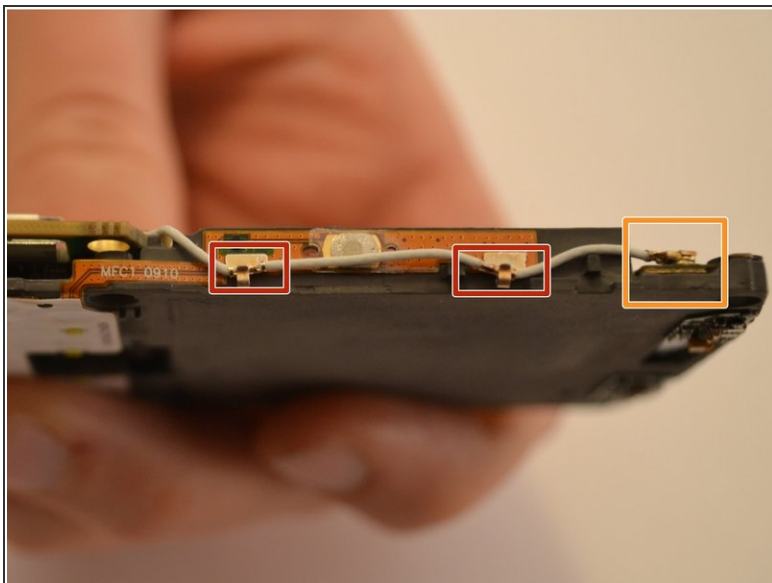
- Remove the midframe from the phone.

Step 6



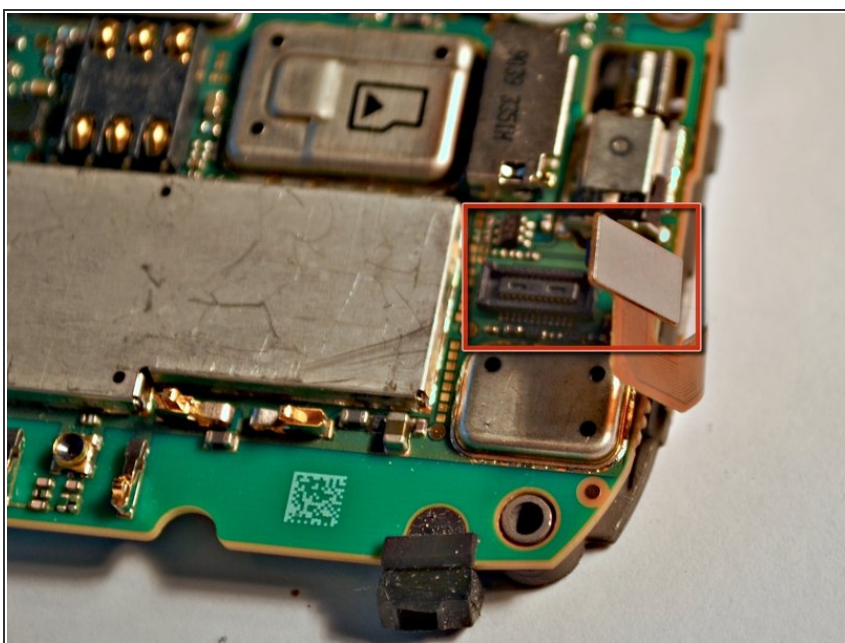
- Gently pry the back the plastic tabs that secure the motherboard to the case.
 - Slowly work your way around the case until the tabs until the motherboard comes free.
 - Remove the motherboard.
- ⓘ The keypad and navigation ball may become loose and fall away from the motherboard.

Step 7



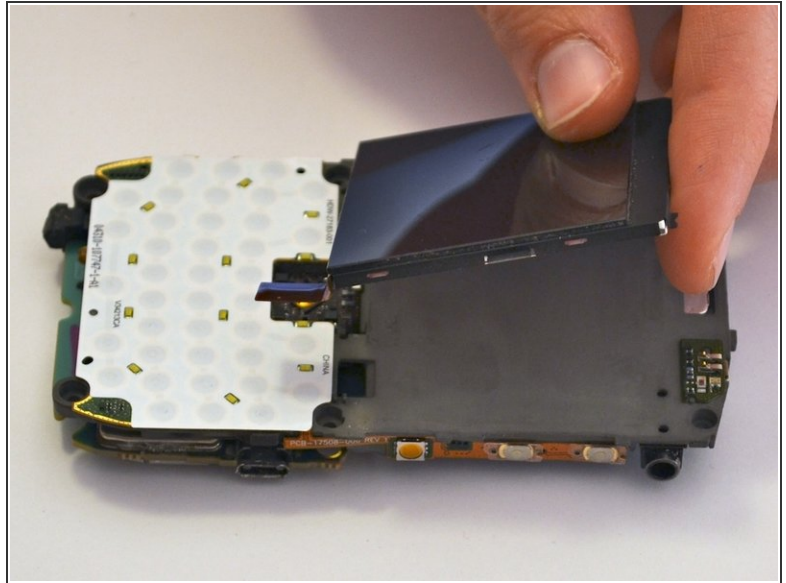
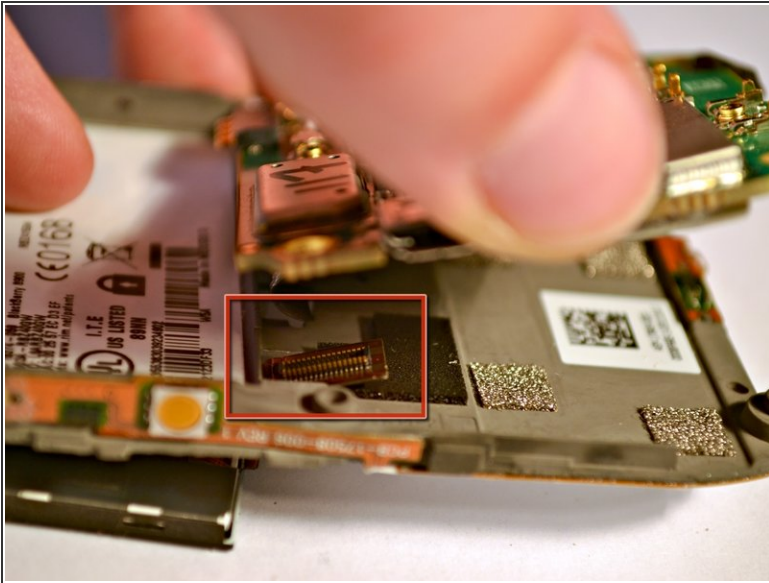
- Carefully detach the antenna from the two clips on the side of the motherboard.
- Carefully disconnect the antenna from the motherboard.

Step 8



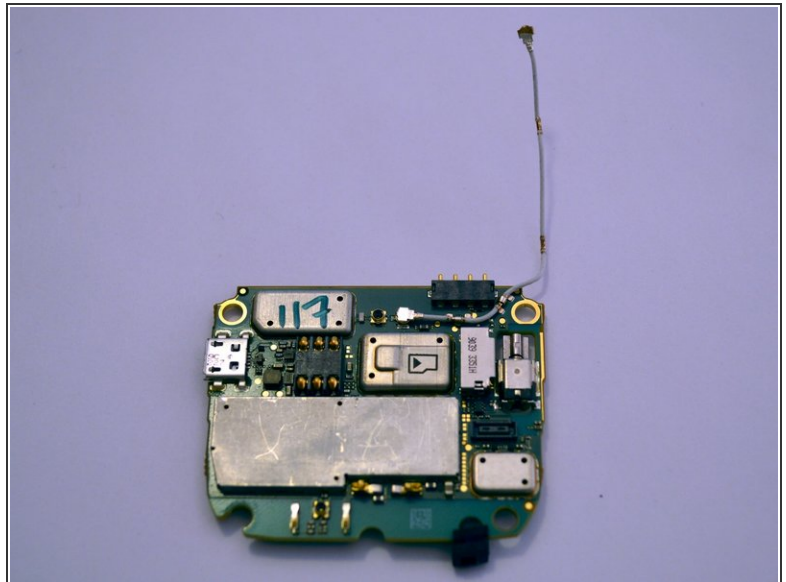
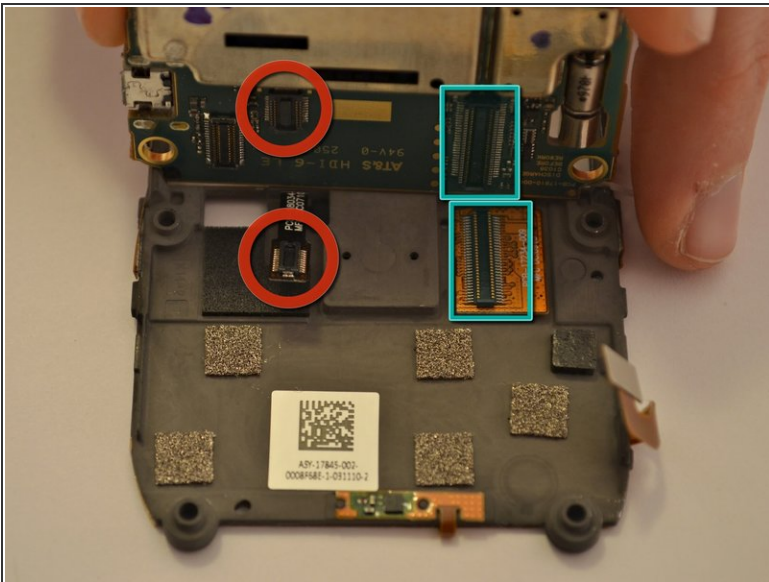
- Carefully disconnect the ribbon cable on the bottom right of the motherboard.

Step 9



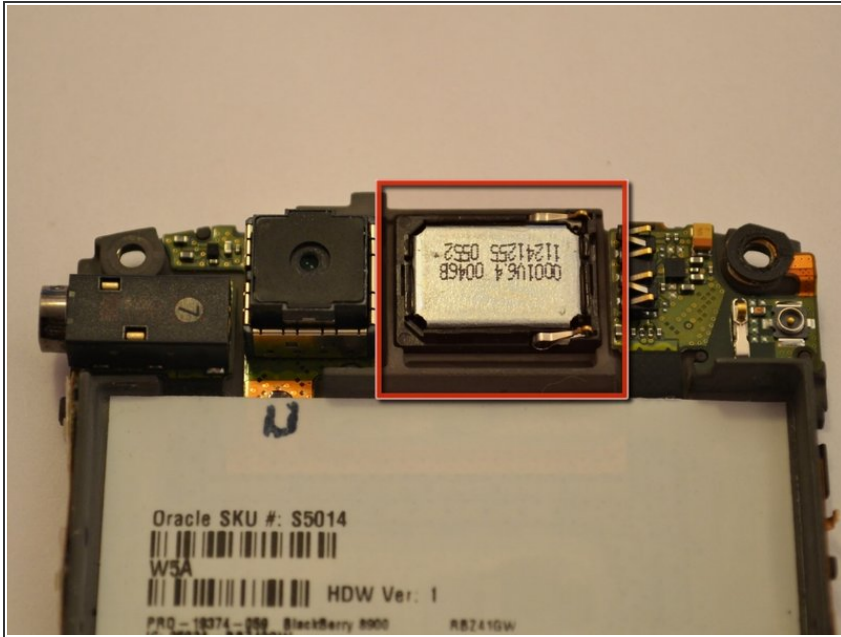
- Remove the screen so that it does not get damaged.

Step 10



- Lift the up motherboard from the bottom edge to reveal to ribbon cables.
- Carefully disconnect the two ribbon cables connecting the motherboard and display.
- Remove the motherboard.

Step 11 — Speaker



- Replace the entire center piece of the case to replace the speaker.

To reassemble your device, follow these instructions in reverse order.