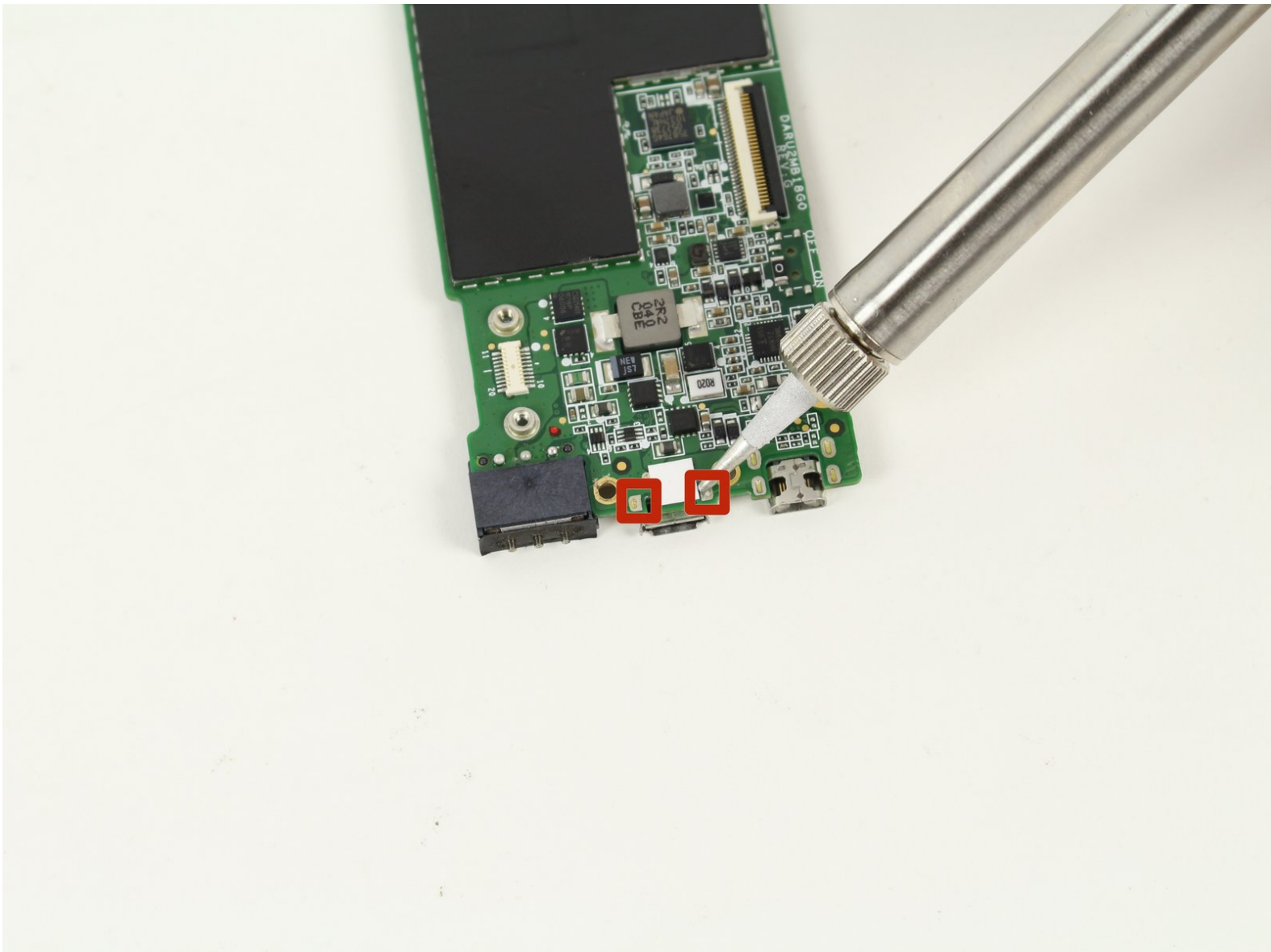




BlackBerry PlayBook USB Port Replacement

Repair your USB port, restoring the device's ability to charge and connect to computers.

Written By: Nathan



INTRODUCTION

The USB port is a common issue with these devices. Our example device's USB port was completely broken off the device. The port is attached to the motherboard by two solder joints, making it easy to reattach or replace once the motherboard has been removed.

TOOLS:

- [Solder](#) (1)
 - [Soldering Workstation](#) (1)
 - [Phillips #000 Screwdriver](#) (1)
 - [iFixit Opening Tools](#) (1)
 - [Spudger](#) (1)
 - [Tweezers](#) (1)
-

Step 1 — Remove Back Panel



- Use a plastic opening tool to pry the back panel off by inserting it in between the front and back panel.
- ⓘ There are clips that need to be released on all four sides of the device.
- ✦ When replacing the back cover insert the bottom side first (usb and hdmi ports stick out about 2mm) inserting them into the covers openings will allow for easier reassembly

Step 2 — Motherboard



- Remove the battery connector using either your fingers or a pair of tweezers.

Step 3



- Unscrew two 1.17x2.9mm Phillips screws from the white connector port.
- Lift the battery connector away from the motherboard using a spudger.

Step 4



- Remove the [flat-top connector](#) coming from across the camera assembly with a spudger.

Step 5



- With the spudger, remove the [flat-top connector](#) coming from underneath the motherboard.

Step 6



- Remove the [clipped ZIF data connector](#) coming from underneath the motherboard.
- Lift up the black plastic clip with a spudger.
- Pull the connector out gently using tweezers.

⚠ Be careful to ensure that the black plastic clip has been lifted away from the connector ribbon before pulling on the connector. The clip should be loose and easy to wiggle. Removing the connector before it is unclipped can cause damage.

Step 7 — Unscrew Motherboard



- Remove the following five screws from the motherboard.
- Three 1.5x2.5mm Phillips screws
- Two 1.55x2.38mm Phillips screws

Step 8 — Remove Wire Leads



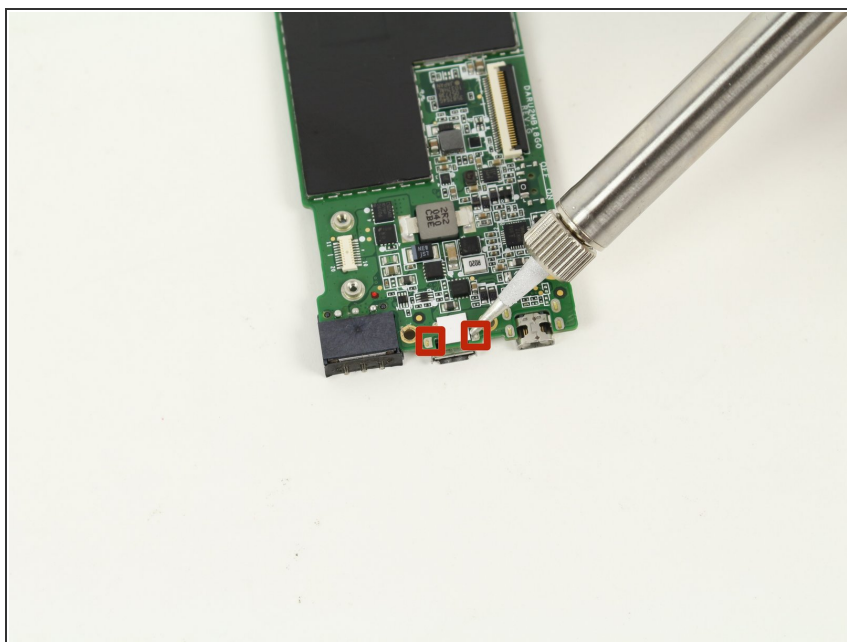
- Lift all four [antenna connectors](#) from the motherboard again using the spudger.

Step 9 — Remove Motherboard



- Gently lift the motherboard away from the device. If there is any resistance, check the previous steps to ensure that all connections have been removed.

Step 10 — Desolder the USB port



- Use your [soldering skills](#) to detach the USB port from the motherboard at the following two solder joints.

To reassemble your device, follow these instructions in reverse order.