



BlackBerry Torch 9850 Battery Replacement

This guide will teach you how to replace the battery in your device.

Written By: Rachel Staigerwald



INTRODUCTION

This device contains a 1230 mAh removable/rechargeable lithium-ion battery. This battery offers a talk time of up to 6.8 hours, standby time of up to 13.4 days, music playback up to 50.2 hours, and video playback up to 6.6 hours. A lithium-ion battery can be very dangerous to work with, especially if it is damaged, so use extreme caution while replacing it. Without a battery your device will not even turn on, so it is important to know how to replace it.

Step 1 — Battery



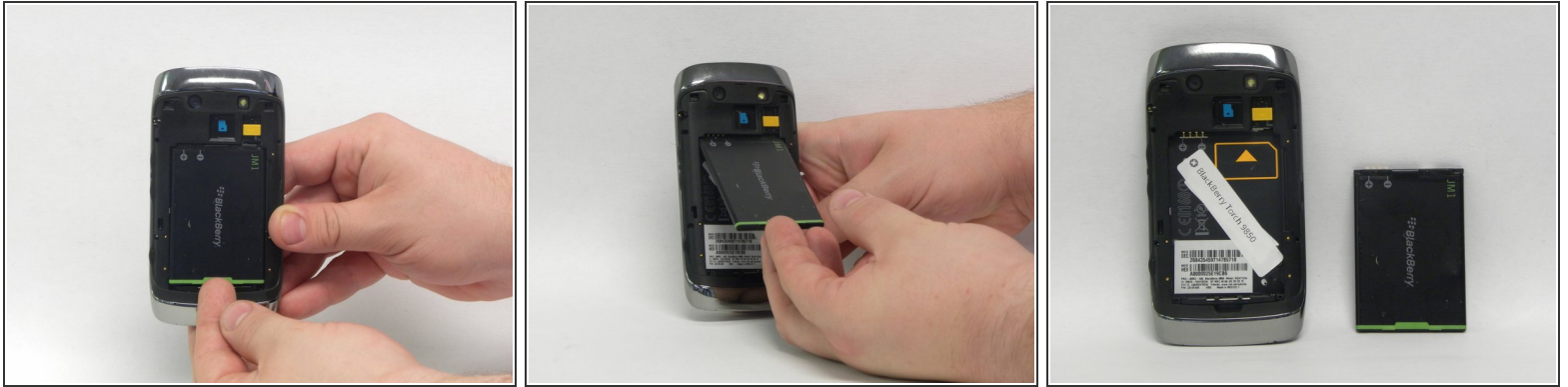
- Power off the device.
- Press and hold down the power/end button on the phone until phone powers off and the screen goes black.

Step 2



- Remove the plastic cover that would normally be on the back of the phone.
- Press down on the release button, which is located on the bottom of the back side of the phone.
- Lift up on the plastic covering and remove.

Step 3



- Remove the battery.
- Once the plastic covering is removed, you can remove the battery.
- Use your fingers or a plastic spudger to pop the bottom of the battery out of its place by pushing and lifting.
- Once the bottom of the battery has ejected, you can easily remove the whole battery from the phone with your hands.

Step 4



- Inserting a new battery.
- Align the plus and minus signs at the top of the battery compartment with the plus and minus signs at the top of the battery.
- Push battery into place.
- Replace the plastic cover by snapping into place.

To reassemble your device, follow these instructions in reverse order.