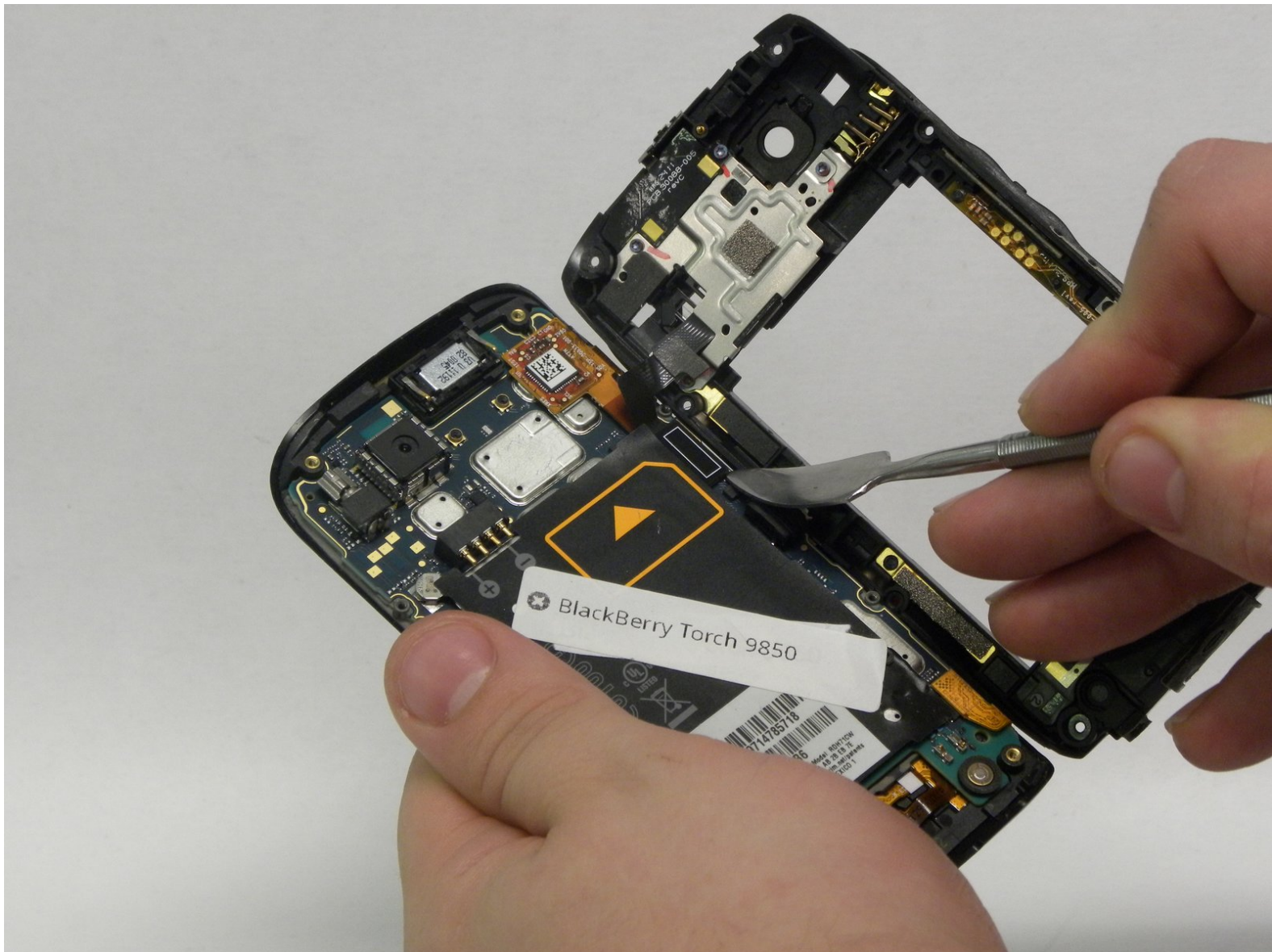




BlackBerry Torch 9850 Sim card reader Replacement

In this guide, I will give you steps on how to replace the sim card reader in your phone. You will learn how to disassemble your device and replace the broken sim card reader.

Written By: Rachel Staigerwald



INTRODUCTION

This repair is important because the sim card reader is an important component in the phone because it is where all of the information is stored. This specific phone comes with a built in sim card reader, so if it does not work it properly it will need to be replaced.

TOOLS:

- [Spudger](#) (1)
 - [Magnetic Project Mat](#) (1)
 - [64 Bit Driver Kit](#) (1)
 - [iFixit Opening Tools](#) (1)
 - [Metal Spudger](#) (1)
-

Step 1 — Display



- Remove the battery.
- Use a plastic spudger tool or your fingers to gently pop the battery out from the bottom by pushing and lifting.

Step 2



- Removing the sim card.
- Press and pull down on the yellow tab until the sim card falls out.

Step 3



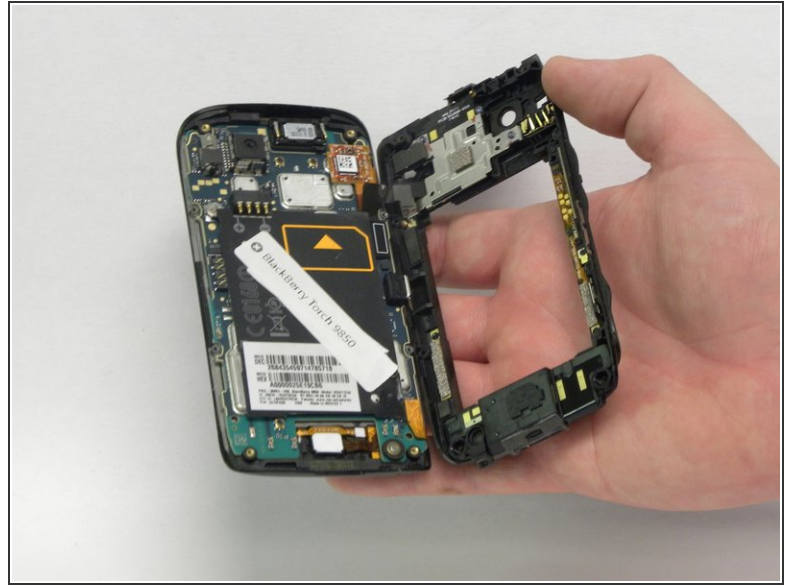
- Remove the plastic bezle.
- To remove the plastic bezle on the back of the phone, use a plastic prying tool to gently pry it off.
- Begin in the center on the bottom of the phone, and slowly work your way around to each side.
- Once the bezle is loosened on both sides, you can gently pull it off with your hands.

Step 4



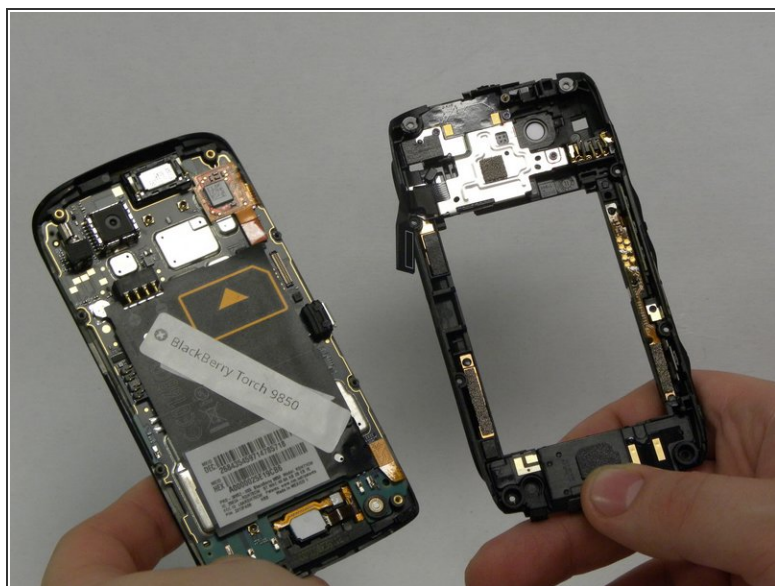
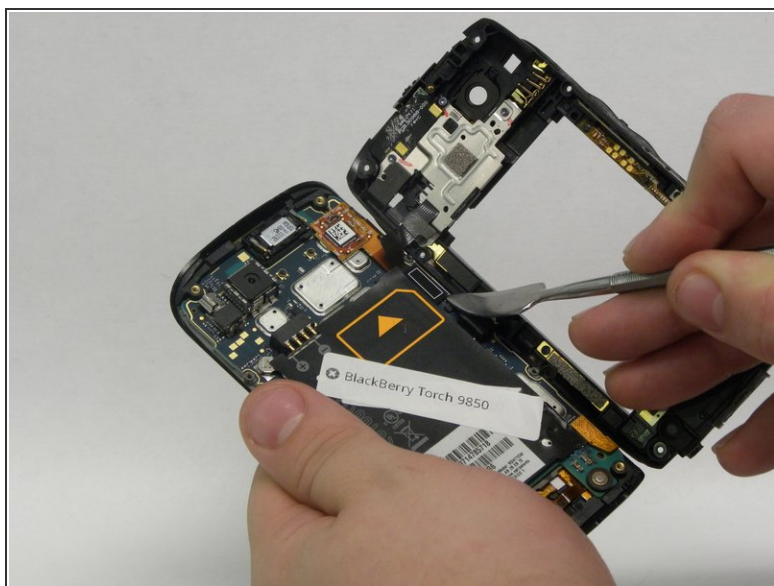
- Remove the screws.
- You will need to remove the ten small screws that hold the back of the phone together.
- Start by using a T5 phillips screw driver to remove the four 4.5 mm screws on the outside corners of the phone.
- Next, use a T4 phillips screw driver to remove the four 4mm screws on the sides of the device.
- Lastly, use the T4 phillips screw driver again to remove the last of the screws, which should be two 2mm screws on the bottom.

Step 5



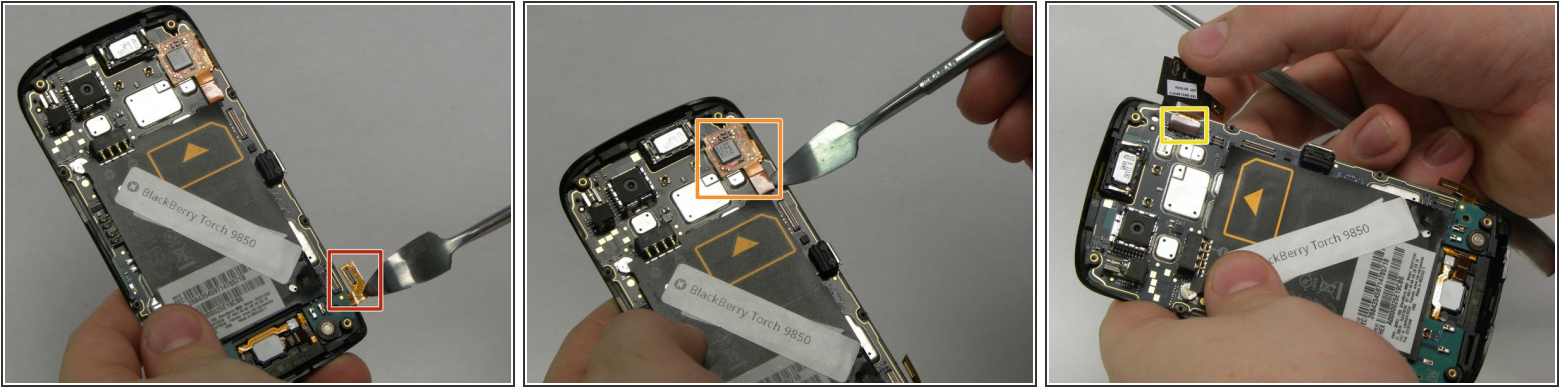
- Remove the back piece.
 - Once you have all the screws removed, gently remove the back piece of the phone with your hands.
- ⚠ Do not pull the back of the phone all the way off, because there are cable ribbons that will break if you do.

Step 6



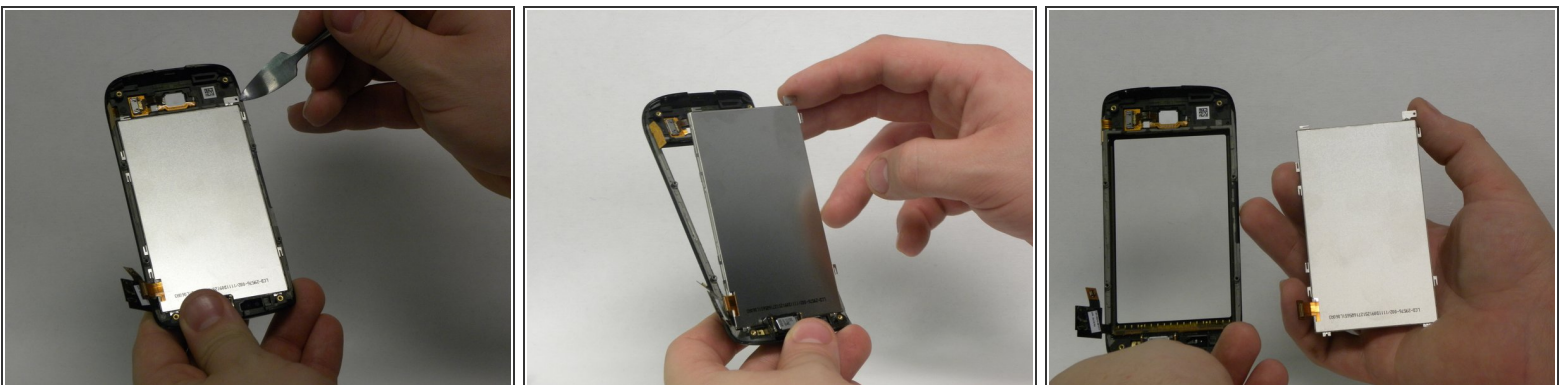
- Disconnect the main cable ribbon.
- There will be a black cable ribbon on the upper right side of the phone.
- Using the metal pry tool, gently pry this cable ribbon open to separate the front and back pieces of the phone.

Step 7



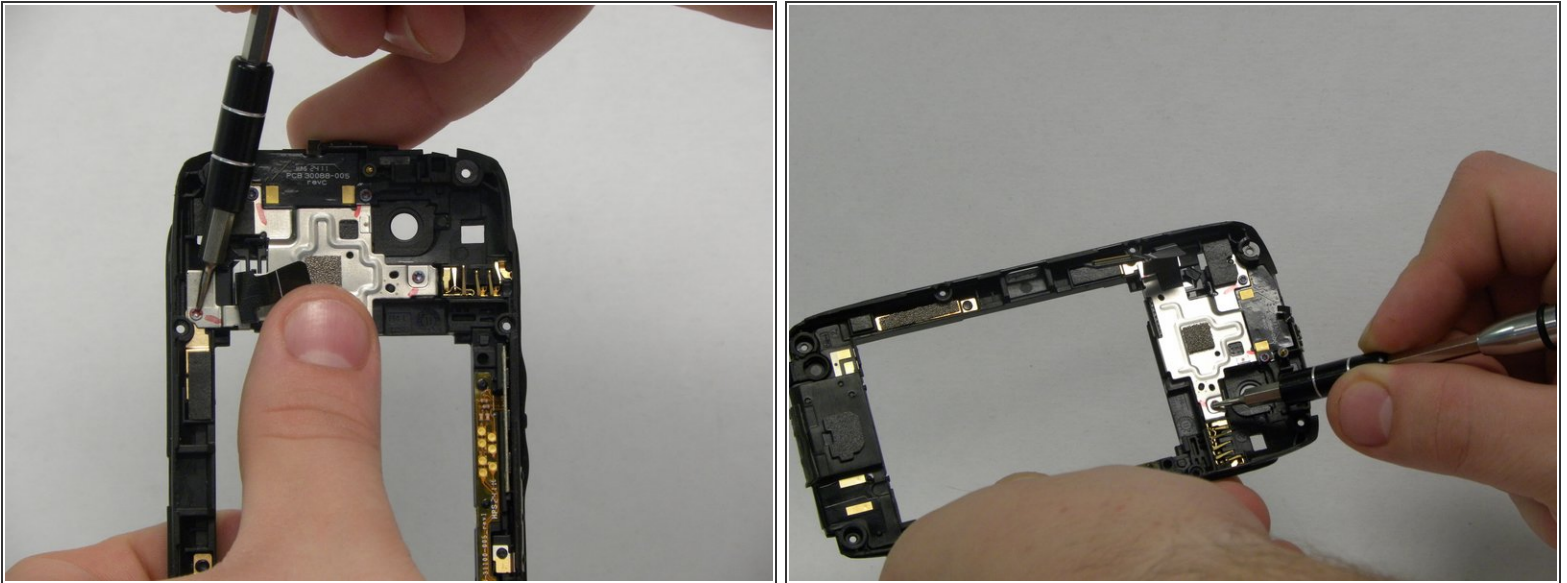
- Disconnect the remaining cable ribbons.
- There are two copper cable ribbons.
- Using a metal pry tool, carefully disconnect the first copper cable ribbon on the bottom right side of the phone.
- Likewise, disconnect the square copper cable ribbon at the top right of the phone.
- Once you disconnect the first square cable ribbon, a second will be exposed and you can disconnect that one the same way.

Step 8



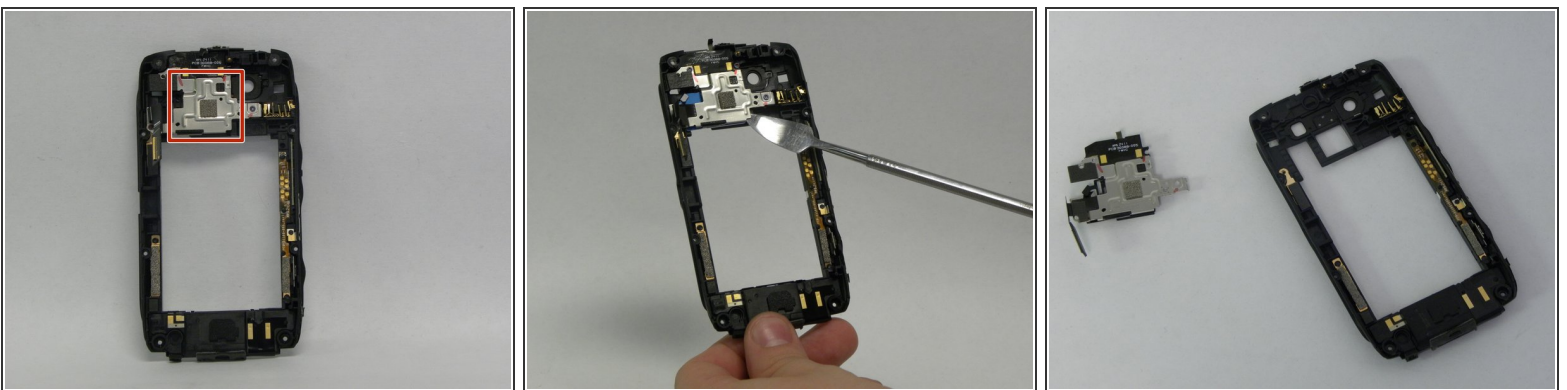
- Remove the LCD screen.
- Once you have completed all of the previous steps, you can remove the display.
- Gently pry on the little tab at the top of the screen to remove it.

Step 9 — Sim card reader



- Remove the four screws from the sim card reader.
- Remove the 1mm screw using a T5 phillips screwdriver.
- Remove the three 3mm screws also using a T5 phillips screwdriver.

Step 10



- Remove the sim card reader.
- Use the metal pry tool to gently remove the sim card reader.

To reassemble your device, follow these instructions in reverse order.

This document was generated on 2019-09-21 11:20:19 AM (MST).

