



# BlackBerry Z30 Battery Replacement

Replace the internal Battery of this device

Written By: Hans



---

# INTRODUCTION

Replace the internal Battery of this device

---



## TOOLS:

- [iFixit Opening Tools](#) (1)
  - [Spudger](#) (1)
  - [T5 Torx Screwdriver](#) (1)
-

## Step 1 — Battery cover



- Remove the battery cover by grabbing the notch under the bottom speakers and lifting.

## Step 2 — Remove SIM and Media Card



- Remove the SIM card and the Media SD card by pushing on them.

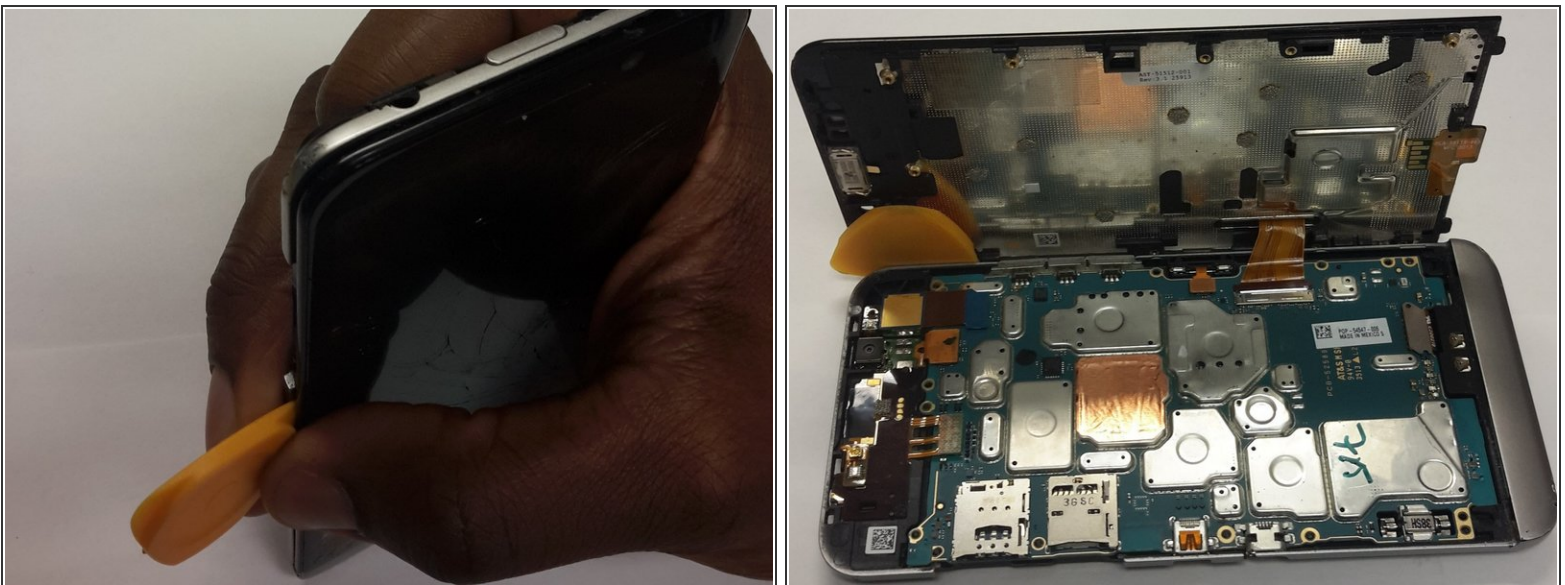


### Step 3 — Unscrewing the LCD panel





- Locate and unscrew all 10 T5 screws around the back cover

### Step 4 — Separate the LCD from the Frame

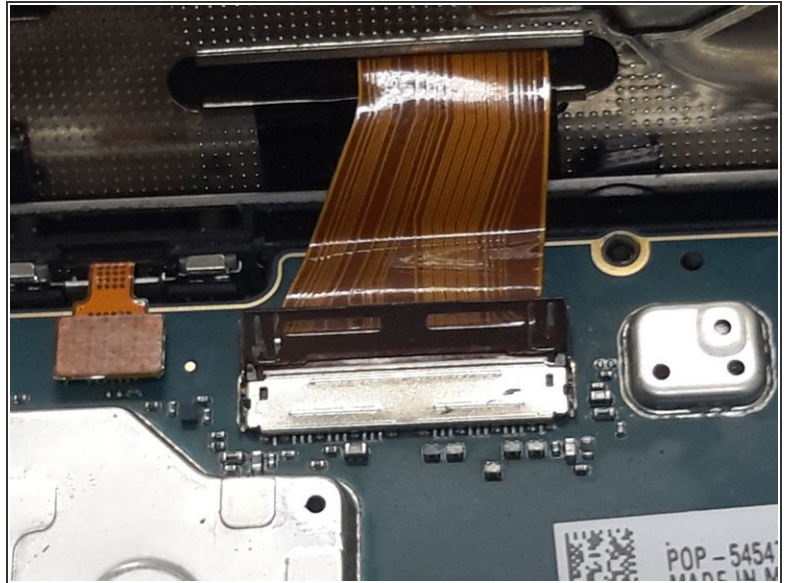
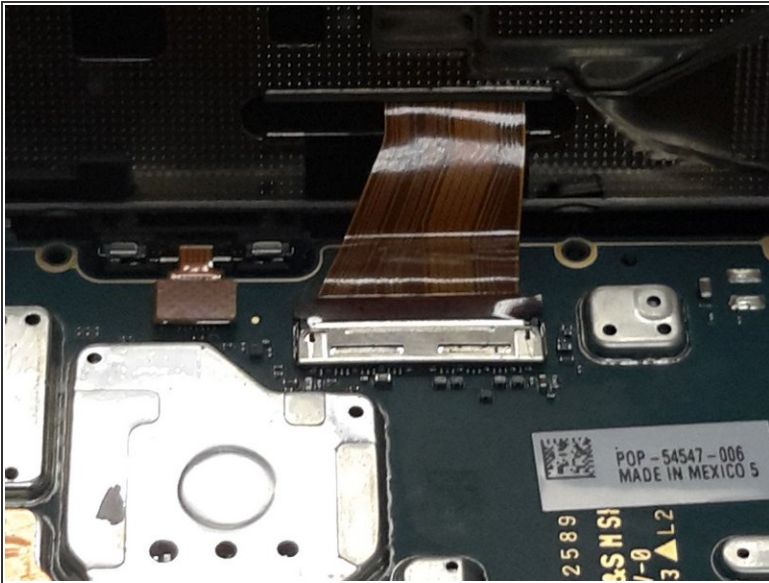


- Use Plastic opening tools to separate the LCD from the Main body

 Do NOT remove the screen yet, it is attached with a very fragile ribbon to the main board.

 Start on the same side of the Audio Jack

## Step 5 — Remove the LCD



- Use a plastic tool to carefully switch up the LCD ribbon holder
  - Detach the LCD from the main board
- i** When installing the new LCD, make sure the ribbon is inserted to the white line.

## Step 6 — LCD Panel removal



- You can now detach the LCD Panel from the main frame.



## Step 7 — Untie the System board



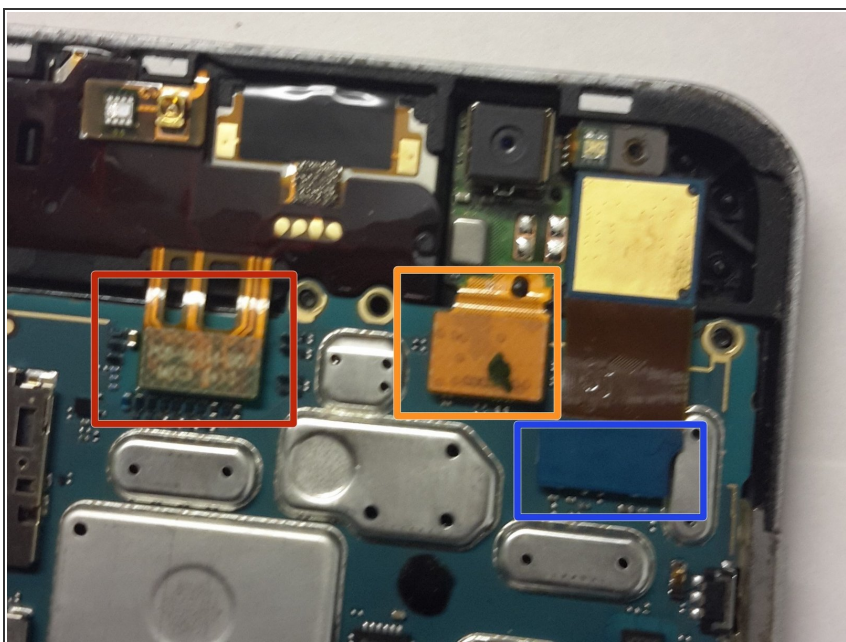
- With a plastic tool, untie the system board by detaching the ribbons attached to it
- The battery ribbon is on the bottom right
- ⚠ Be gentle when detaching these Ribbons as they are very easy to tear and damage.

## Step 8 — Untie the System board Part 2



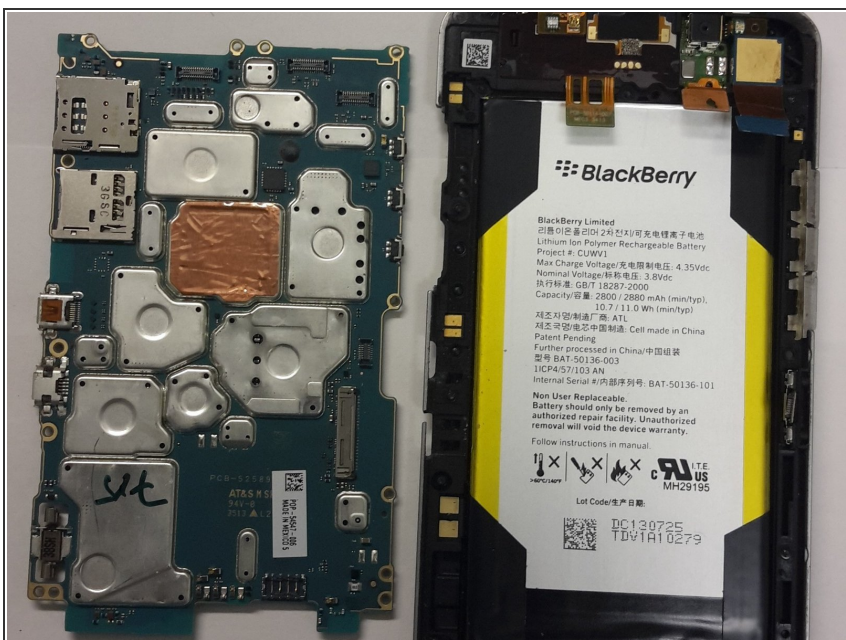
- ⚠ Be gentle as any other system board ribbons, they are very easy to damage

## Step 9 — Untie the system board Part 3



- Power Button /Audio Jack
- Flash
- Rear Facing Camera

## Step 10 — System board removal

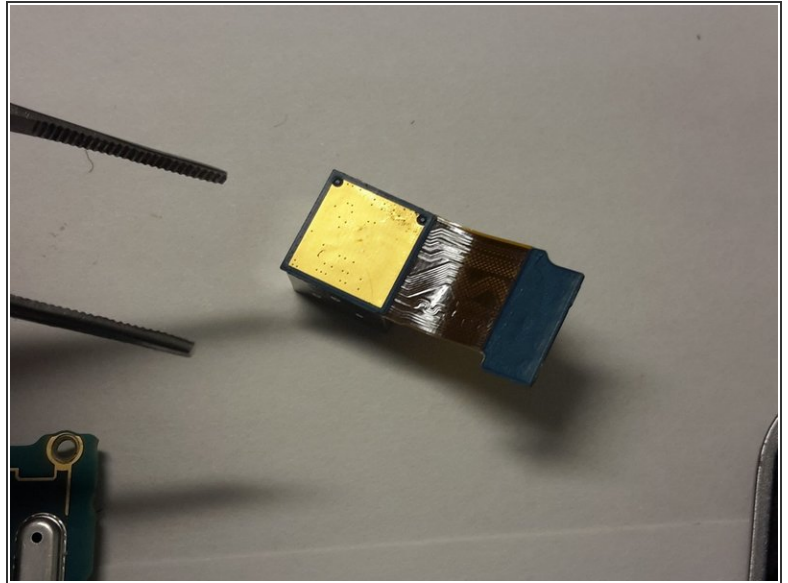


- Once all Ribbons untied, gently wiggle the system board out of the frame

⚠ Do not pull hard as there might be a ribbon on the way



## Step 11 — Remove the Rear Camera



- Use a pair of pliers to remove the rear facing camera

## Step 12 — Remove the Battery



- ⚠ If this is the original battery, it might be hold down by VERY strong adhesive on the top, middle and bottom part. Be careful not to damage the battery
- ⚠ As pointed in the comments, be careful about the NFC membrane when removing the battery. Use heat to loosen the glue.

To reassemble your device, follow these instructions in reverse order.