



Blackberry Bold 9650 Back Chassis Replacement

Step-by-step guide to remove your Blackberry's back cover.

Written By: Ryan





TOOLS:

- [T6 Torx Screwdriver](#) (1)
- [iFixit Opening Tools](#) (1)



PARTS:

- [Blackberry Bold 9650 Back Chassis](#) (1)

Step 1 — Battery



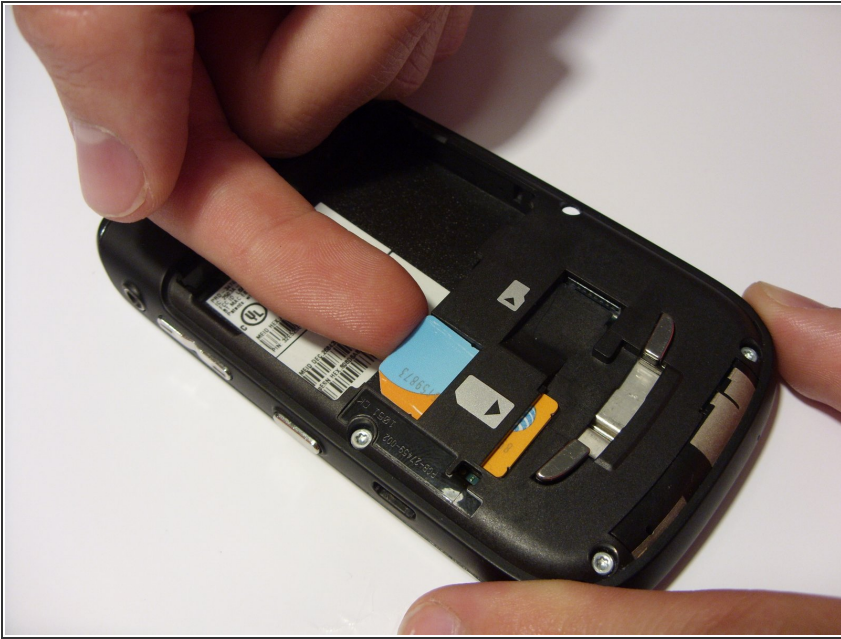
- Turn the device upside down.
- Using your finger, slide the silver cover release button towards the top of the device.
- Lift and remove the back cover.

Step 2



- Using your fingernails, lift the sides of the battery.
- Remove the battery.

Step 3 — SIM Card



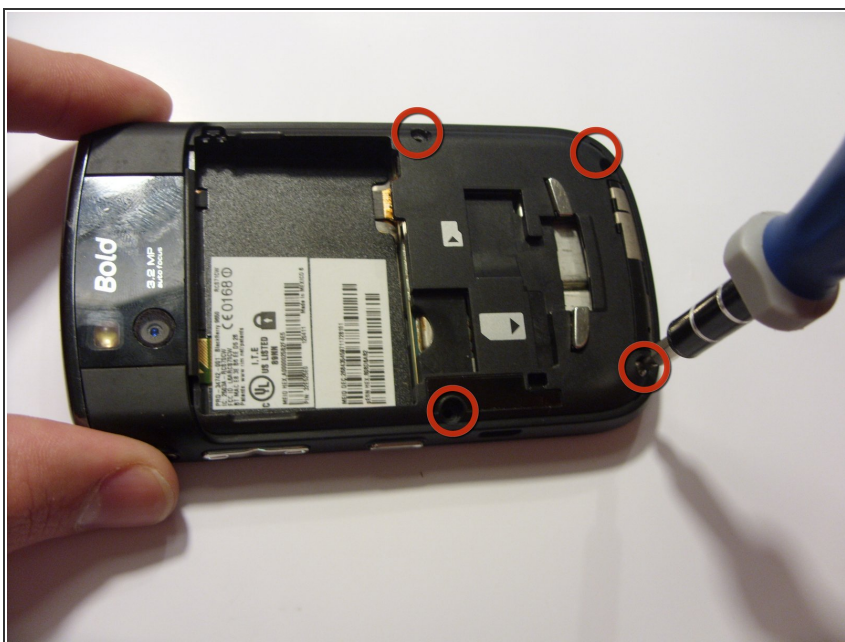
- Orient the device so the screen is facing the ground.
- Using your finger, gently lift the top of the SIM card.

Step 4



- Gently pull out the SIM card.
- ⚠ The card will break in half if you apply too much force when pulling out the card.

Step 5 — Back Chassis



- Using a T6 Torx Screwdriver, remove the four torx screws located on the bottom half of the device.

Step 6



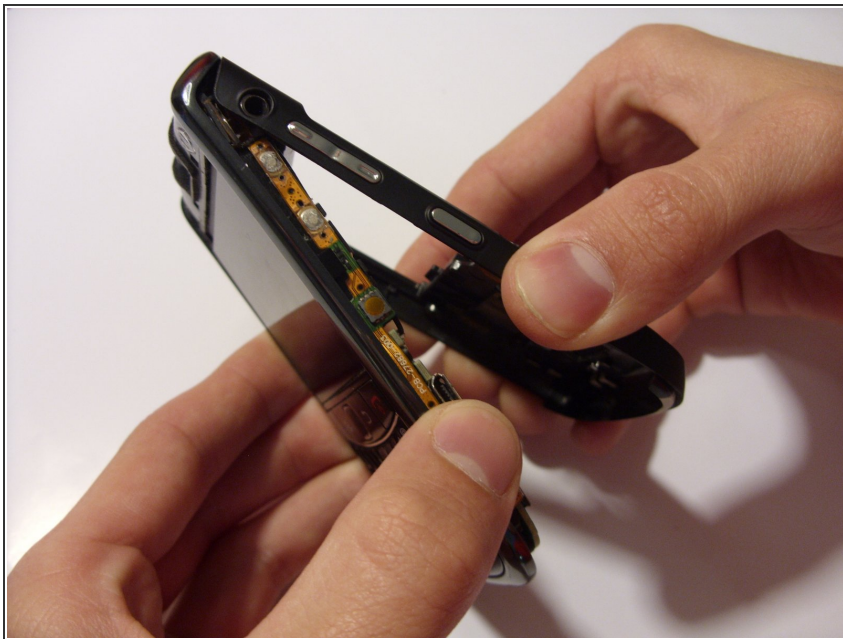
- Orient the device so that the screen is facing you.
- Using a spudger, remove the ear piece cover.

Step 7



- Using a T6 Torx Screwdriver, remove the two torx screws located in the top corners of the device.

Step 8



- Remove the back chassis by gently pulling the chassis back and forth.
- ⚠ The headphone jack can break if the chassis is pulled too forcefully.

To reassemble your device, follow these instructions in reverse order.