



Blackberry Bold 9900 Memory Card Replacement

This guide will show you how to replace the memory card in the BlackBerry Bold 9900.

Written By: Sowmika



INTRODUCTION

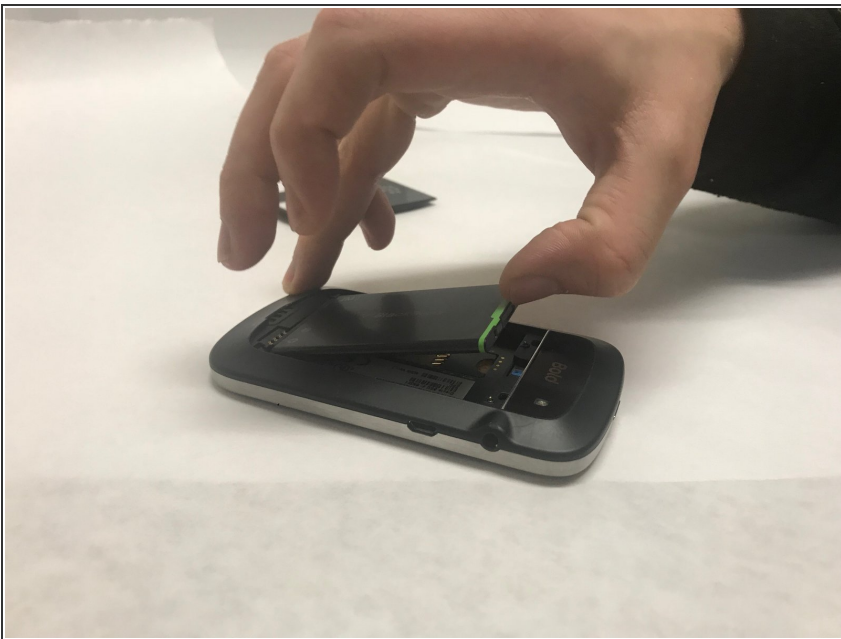
Replacement of the Memory Card is a simple replacement that will improve storage capabilities on the phone. The Memory Card is fragile and must be handled with care.

Step 1 — Battery



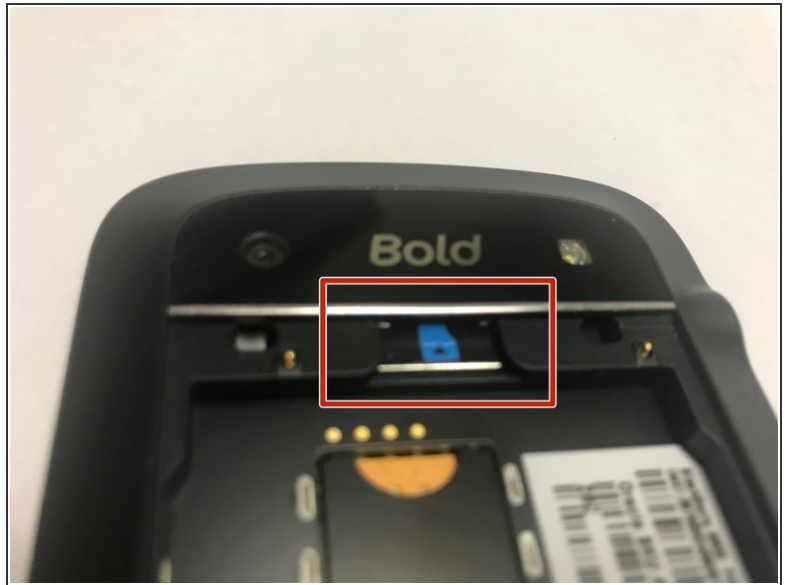
- Place phone screen down.
- Use your finger to lift upward on the battery case.
- Pull the cover away from the battery.

Step 2



- Lift the edge of battery with the green stripe upward to remove battery.

Step 3 — SIM Card



- The SIM Card is located where the red rectangle is shown.
- To remove SIM Card, push the card inward towards the top of the phone then release. The SIM card will be ejected.

Step 4 — Memory Card



- The Memory Card is located inside the red rectangle.
- To remove the Memory Card, push and slide the card inward towards the top of the phone. It will be ejected.

To reassemble your device, follow these instructions in reverse order.