



Blackberry Bold 9900 SIM Card Replacement

This guide contains step by step instructions on how to replace the BlackBerry Bold 9900 SIM card.

Written By: MacKenzie Scarlett



INTRODUCTION

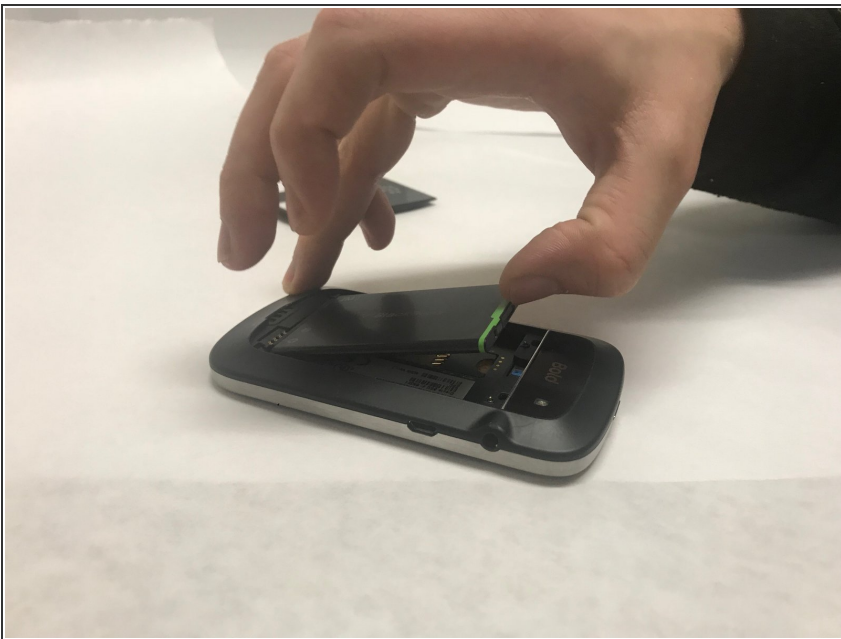
Replacement of the SIM Card is a simple replacement that will improve calling capabilities of the device. The SIM Card is a delicate piece that must be handled carefully, so be sure to not use too much force when handling and removing the SIM Card.

Step 1 — Battery



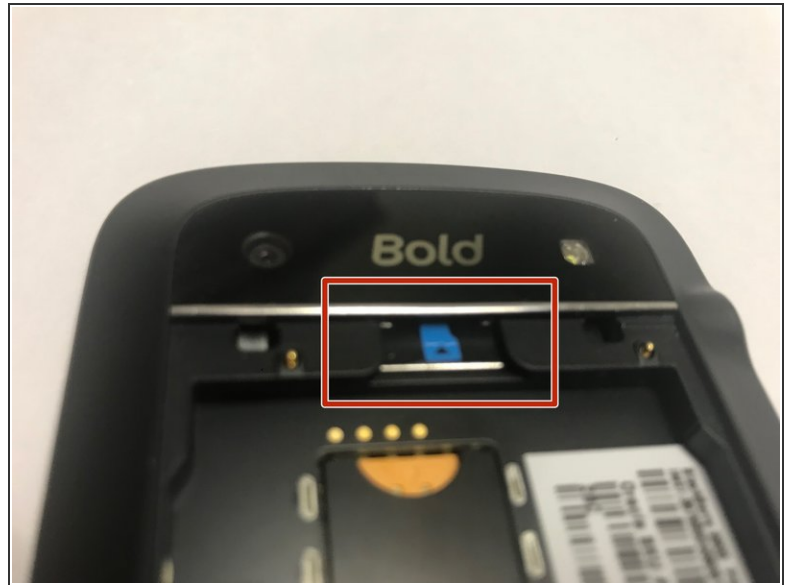
- Place phone screen down.
- Use your finger to lift upward on the battery case.
- Pull the cover away from the battery.

Step 2



- Lift the edge of battery with the green stripe upward to remove battery.

Step 3 — SIM Card



- The SIM Card is located where the red rectangle is shown.
- To remove SIM Card, push the card inward towards the top of the phone then release. The SIM card will be ejected.

To reassemble your device, follow these instructions in reverse order.