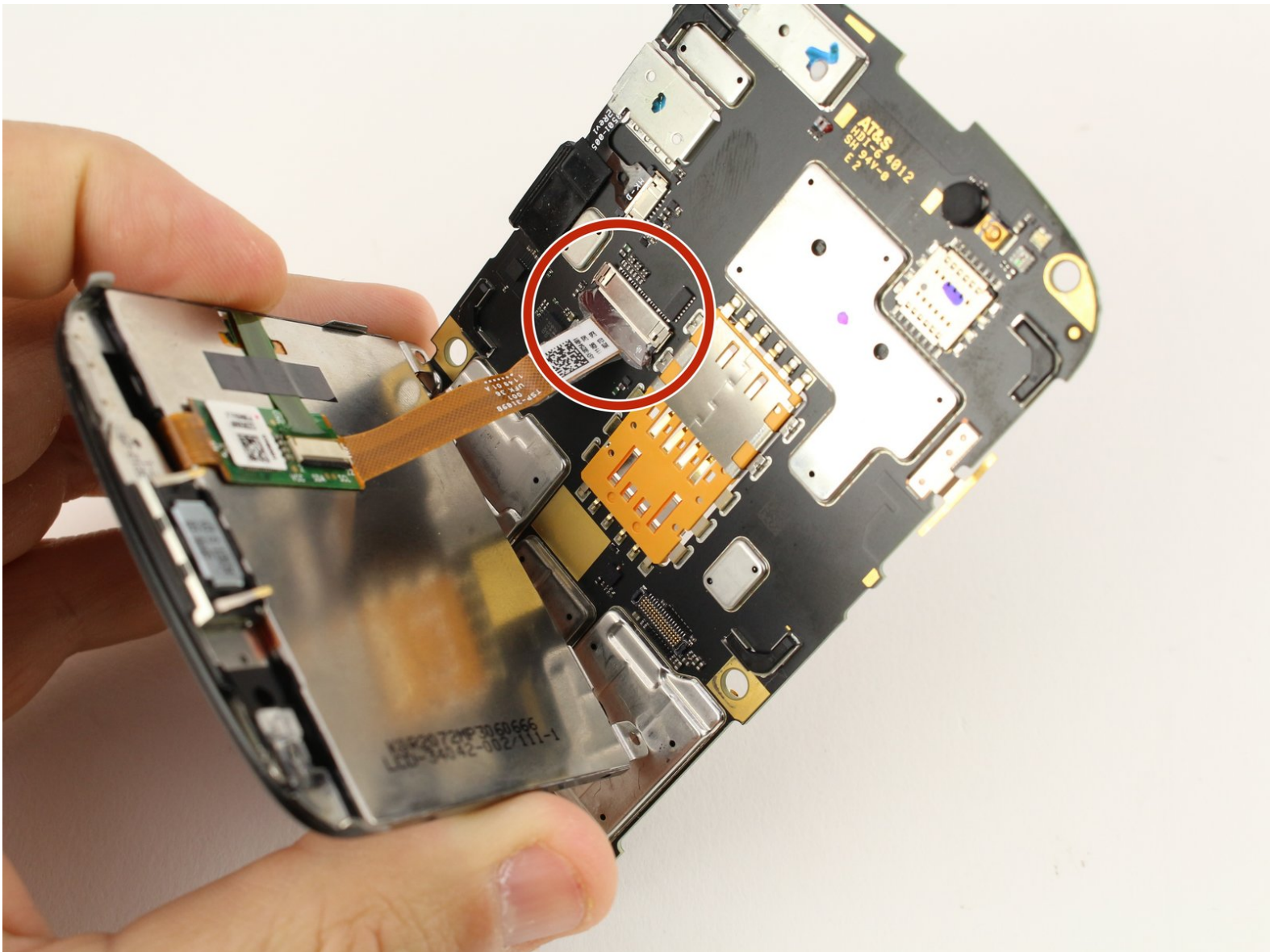




Blackberry Bold 9900 Screen Replacement

This guide will show how to replace a broken screen in the Blackberry Bold 9900.

Written By: Austin Blakely



INTRODUCTION

This guide will explain the process of replacing a faulty screen in your Blackberry Bold 9900. It will require a near complete disassembly of the phone, but keeping that retro Blackberry alive in a world of smartphones is invigorating and worth it, right?



TOOLS:

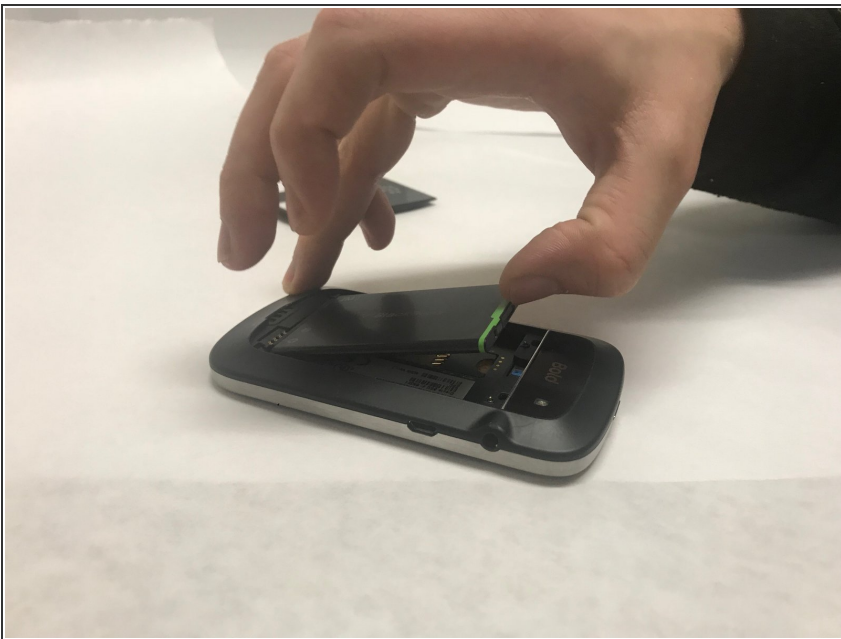
- [Spudger](#) (1)
 - [T5 Torx Screwdriver](#) (1)
-

Step 1 — Battery



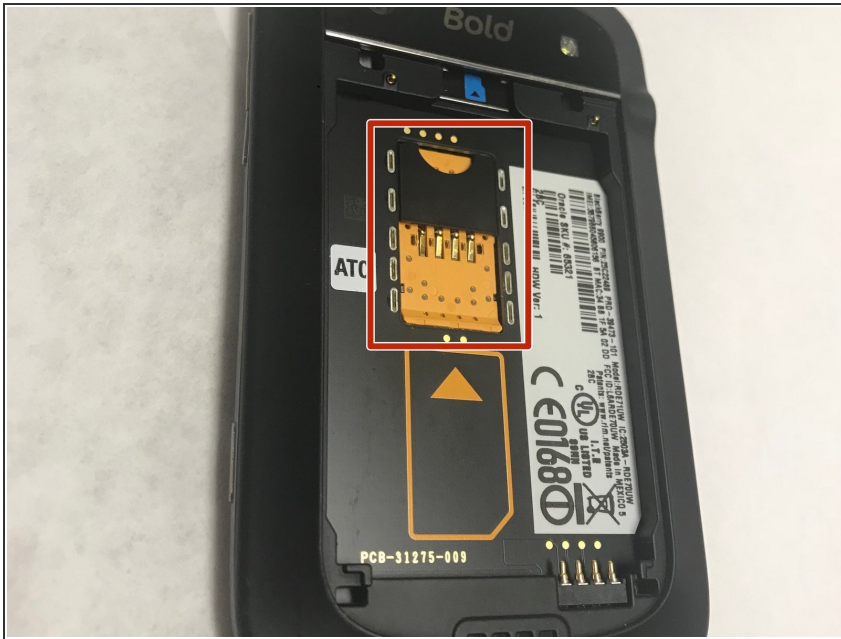
- Place phone screen down.
- Use your finger to lift upward on the battery case.
- Pull the cover away from the battery.

Step 2



- Lift the edge of battery with the green stripe upward to remove battery.

Step 3 — Memory Card



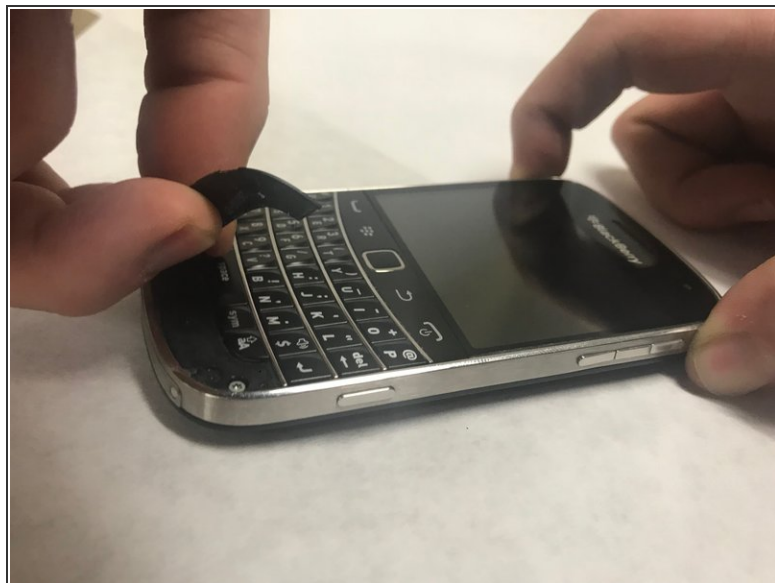
- The Memory Card is located inside the red rectangle.
- To remove the Memory Card, push and slide the card inward towards the top of the phone. It will be ejected.

Step 4 — SIM Card



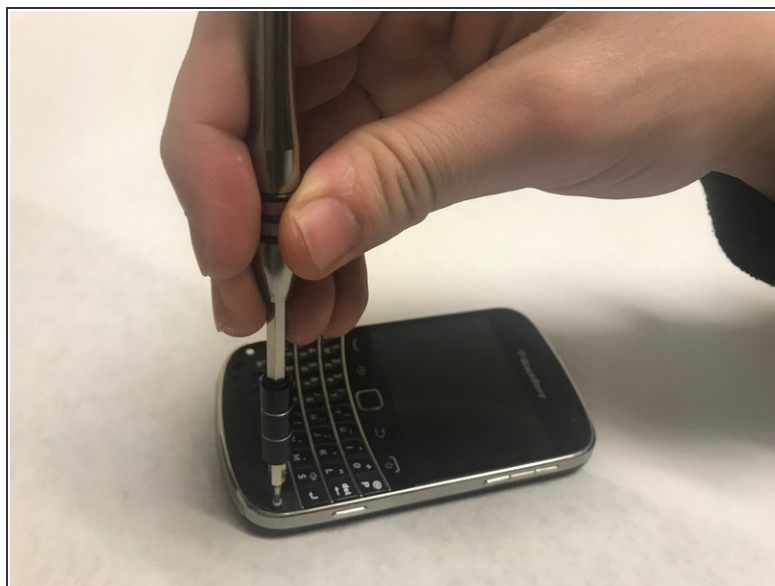
- The SIM Card is located where the red rectangle is shown.
- To remove SIM Card, push the card inward towards the top of the phone then release. The SIM card will be ejected.

Step 5 — Keyboard



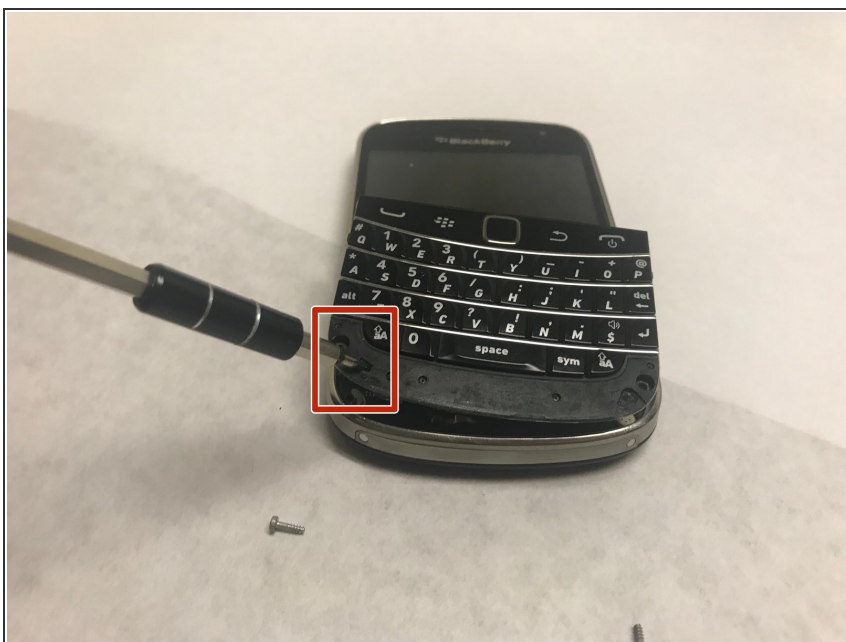
- Lift the bezel at the bottom of the phone up and peel it away from the phone.

Step 6



- Remove the two exposed screws using the T5 Torx screwdriver.

Step 7



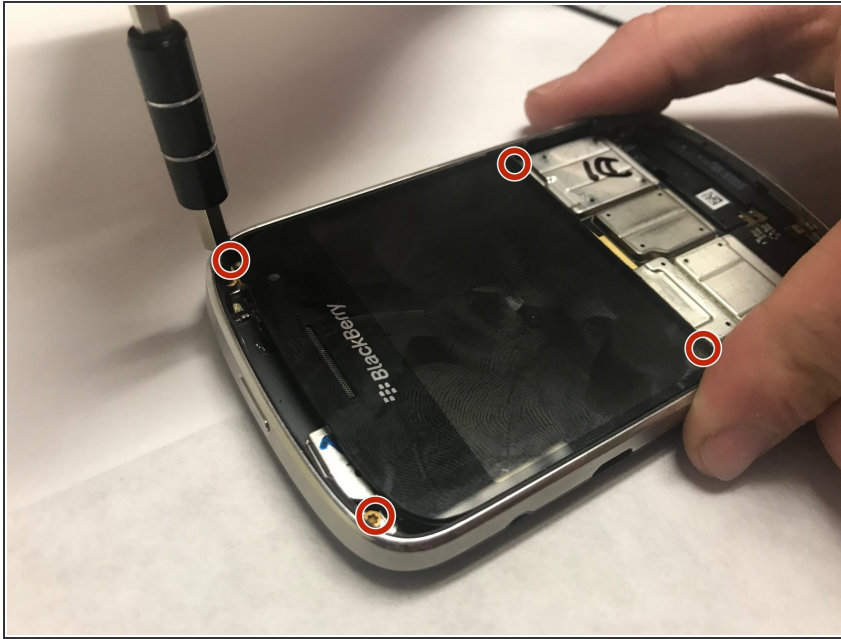
- Now lever the keyboard up using the screwdriver in the indicated hole.

Step 8



- The keyboard is attached via a ribbon cable. Pull the cable up to remove the keyboard.

Step 9 — Back Case



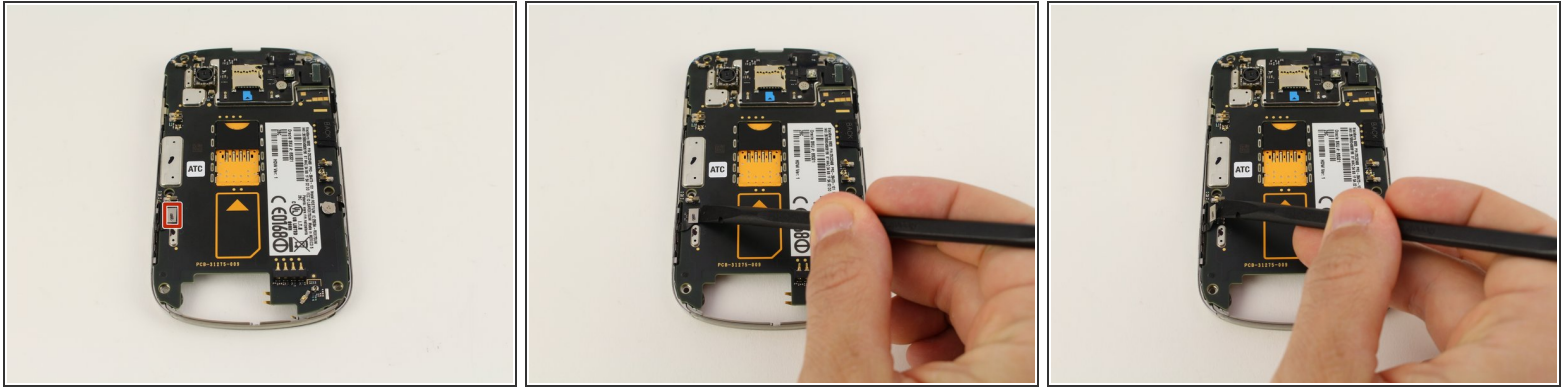
- Using the T5 Torx Screwdriver, remove the four torx screws that are located on the bottom half of the device

Step 10



- Now, carefully and gently using your fingers, lift and remove the assembly from the back case.

Step 11 — Power/Volume Button



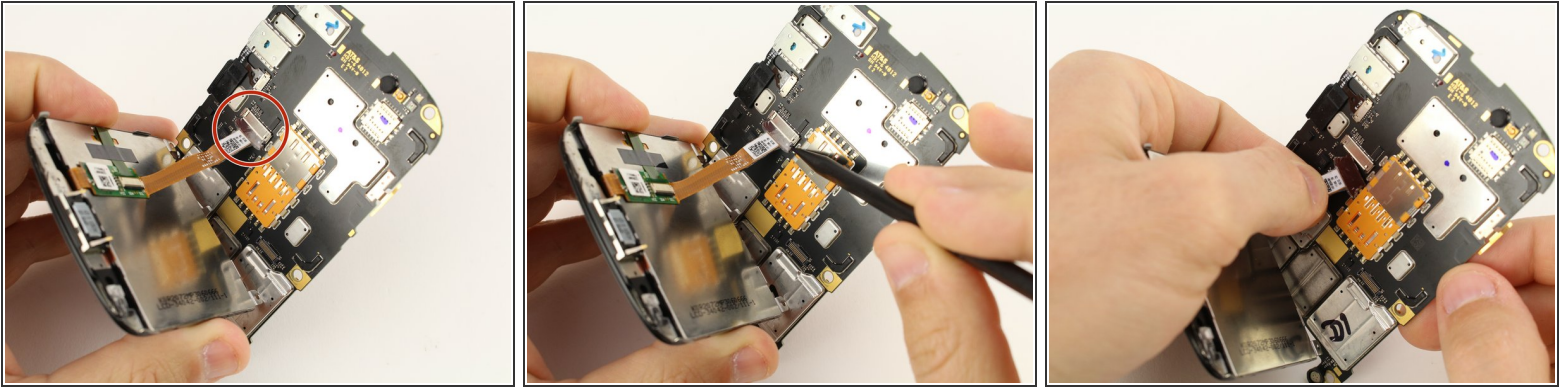
- Use the black nylon spudger to pop the press fit connector up from the lower left corner of the motherboard.

Step 12



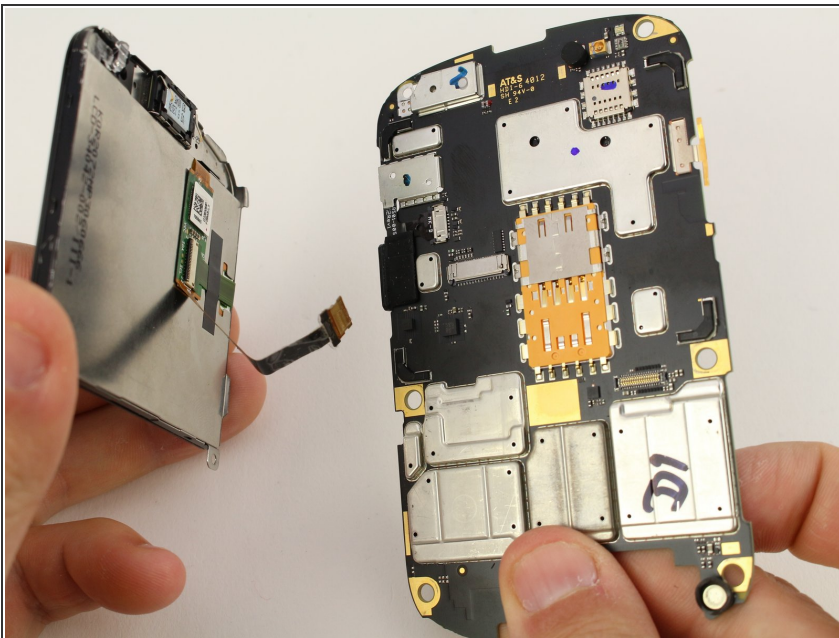
- Lift the midframe, which contains the power/volume buttons, off of the motherboard and screen.

Step 13 — Screen



- Using a spudger, gently remove the display cable out from the motherboard.
- When it seems it has become loose enough, remove it by pinching the ribbon firmly with your fingers and gently sliding it the rest of the way out.

Step 14



- Remove the screen from the motherboard.

To reassemble your device, follow these instructions in reverse order.