



# Blackberry Classic digitizer Replacement

Replacement of lcd and digitizer on a Q20

Written By: coutureg



---

# INTRODUCTION

Replacement of lcd and digitizer on a Q20

---



## TOOLS:

- [Essential Electronics Toolkit](#) (1)
  - [iSesamo Opening Tool](#) (1)
  - [Plastic Cards](#) (1)
-

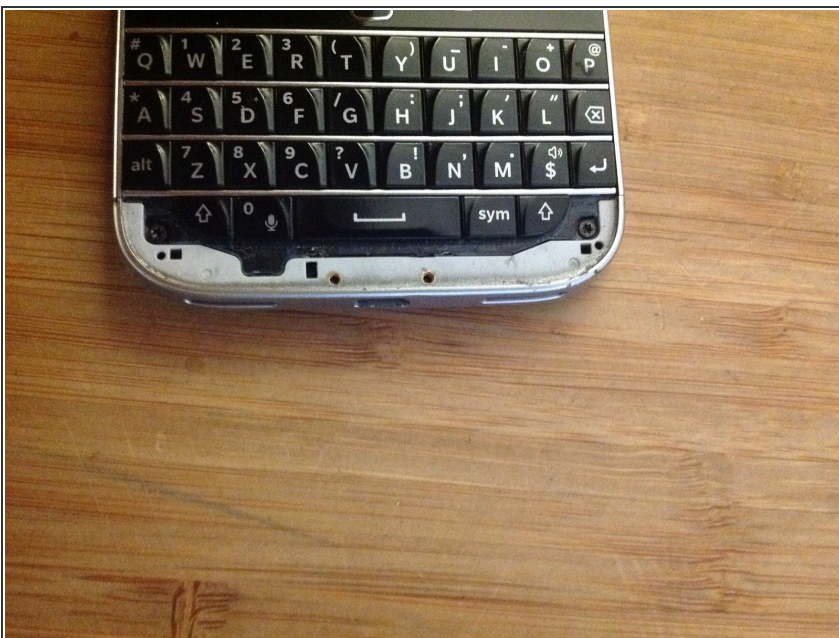


## Step 1 — Digitizer assembly



- Start by removing the back cover.
- It's glued on the top and at the bottom. Use an isesamo and gentle force to remove it

## Step 2



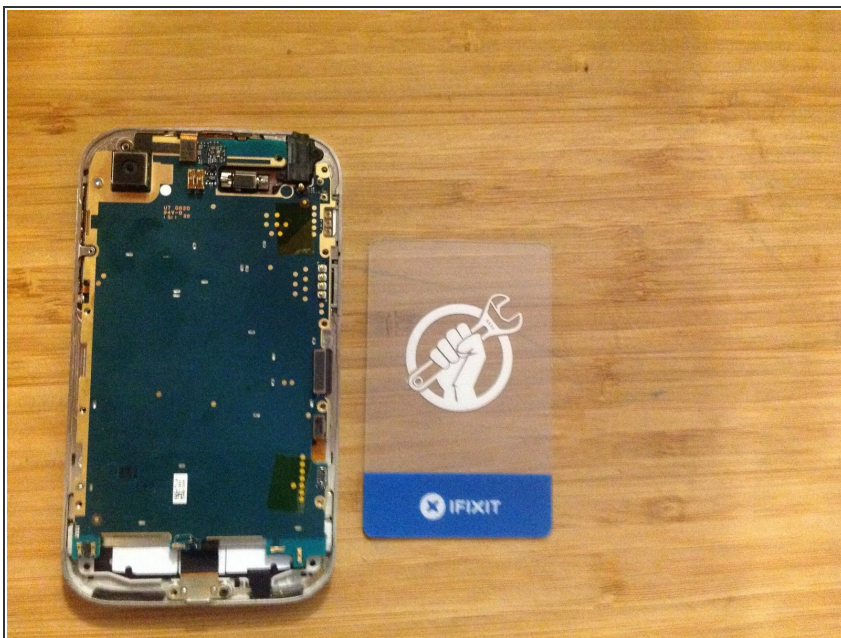
- Like many other blackberry models, lift out the small plastic edge at the bottom of the keyboard
- This will reveal two torx screws to remove

## Step 3



- Turn the blackberry around and remove all torx screws
- Separate the battery screws as they are different
- Watch out for the 00 Philips screw on the top left corner
- Remove the plastic mid-frame

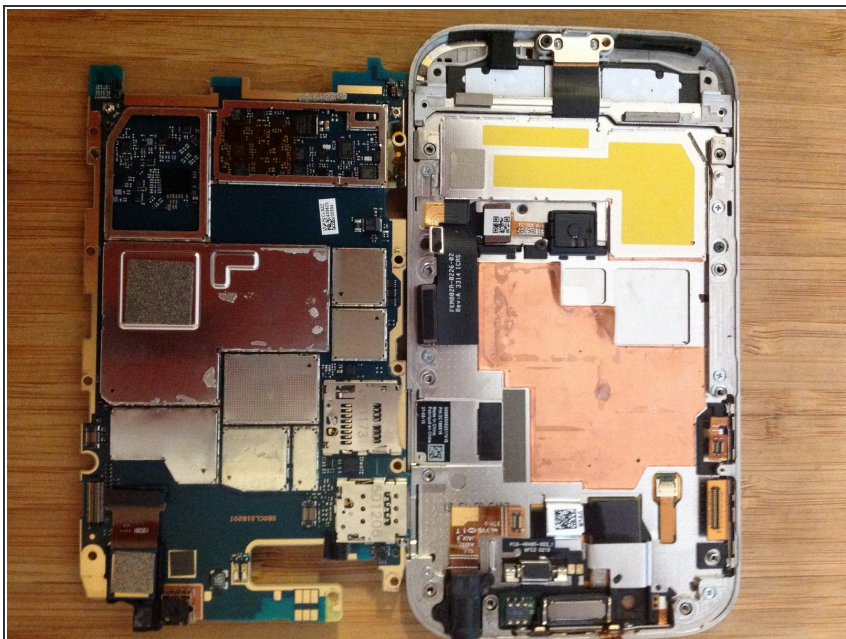
## Step 4



- The battery is held firmly by glue (or space putty?)
- That 4\$ card proved its utility
- Be careful when removing the adhesive not to pry the small connectors at the base of the board.



## Step 5



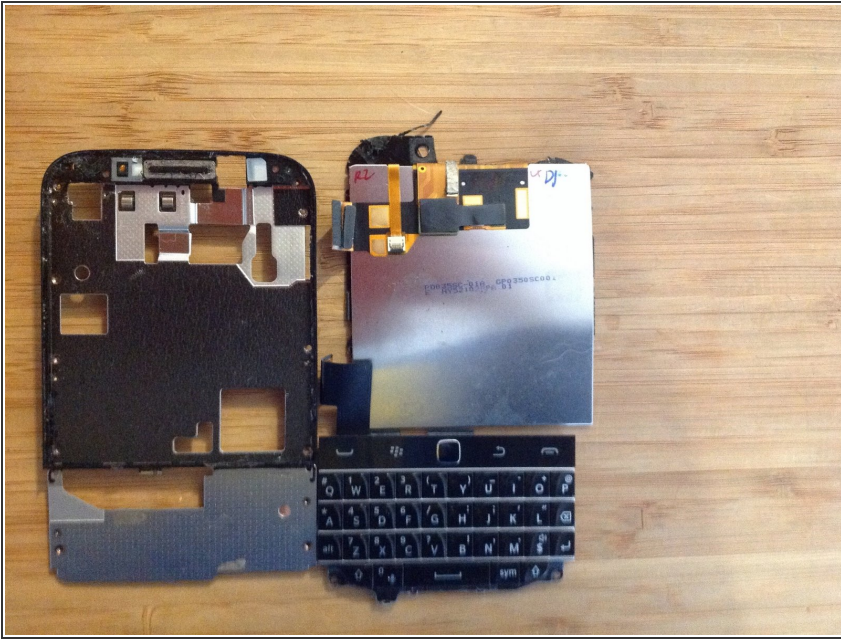
- The board is clipped and lightly glued. Use tweezers to lift the retention clips under the board to release it.

## Step 6



- Remove the micro usb connector, the audio jack and the 3 ph000 screws on the board.
- This will allow you to push out the metal mid-frame

## Step 7



- Once screws are all out, gently lift the broken digitizer. Make sure to lift between the display assembly and the black border.
- Remove any remaining shattered glass from the display frame before reassembling.
- Reassemble in reverse order

To reassemble your device, follow these instructions in reverse order.