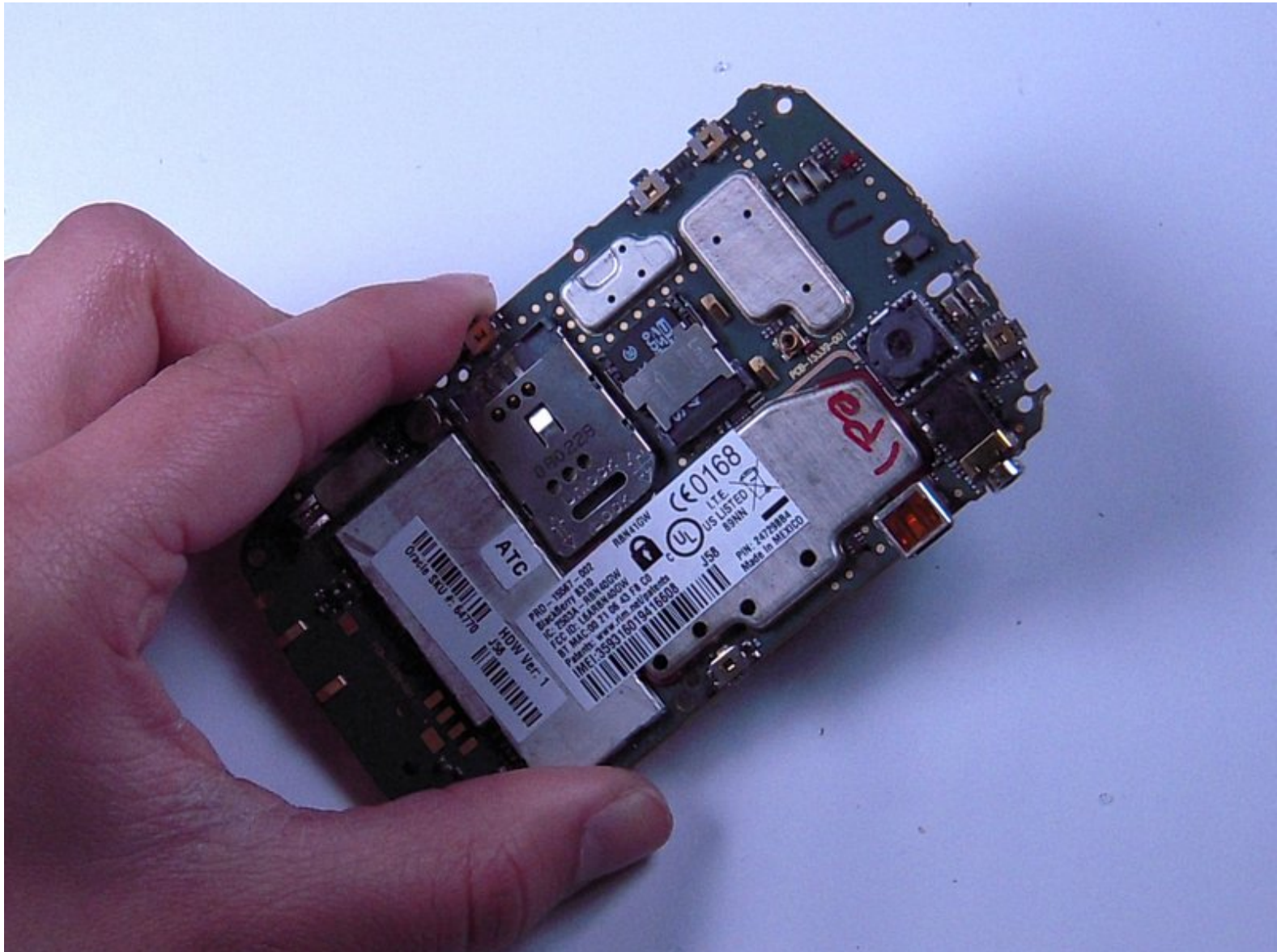




# Blackberry Curve 8310 Motherboard Replacement

This guide will show you how to remove the motherboard in your Blackberry Curve 8310.

Written By: Sean Willis





## TOOLS:

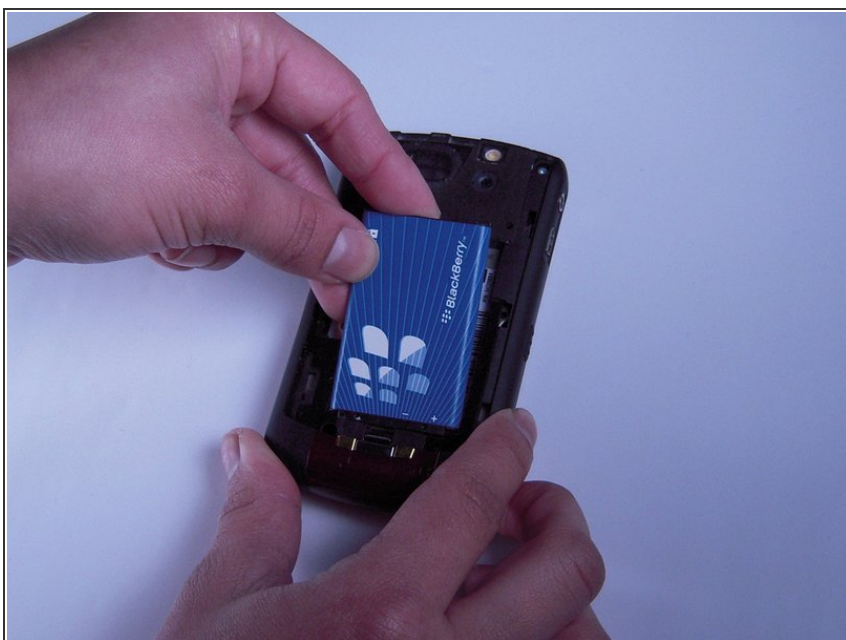
- [iFixit Opening Tools](#) (1)
  - [T5 Torx Screwdriver](#) (1)
  - [Tweezers](#) (1)
  - [T6 Torx Screwdriver](#) (1)
-

## Step 1 — Battery



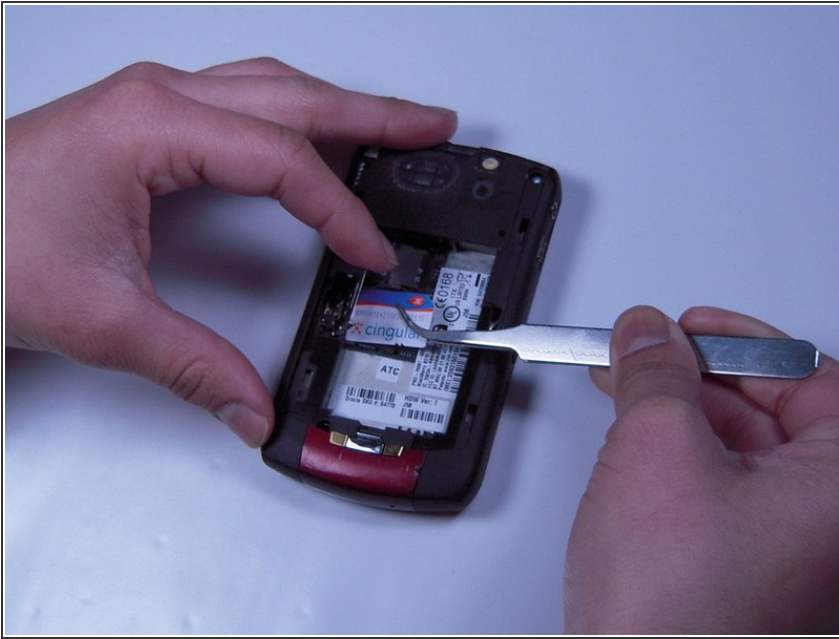
- Press down on the battery release button and slide the back cover up with your thumb.

## Step 2



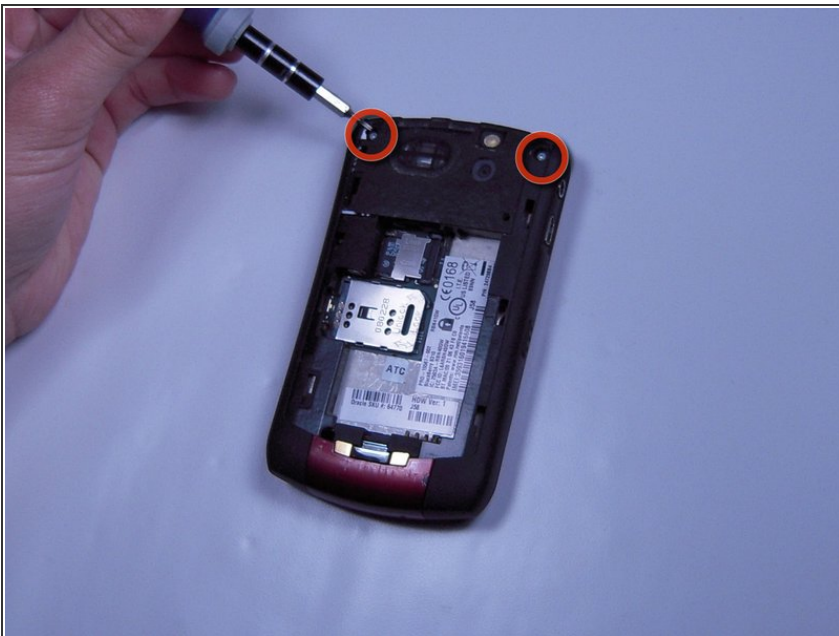
- Pry from the top of the battery to pull it out.

## Step 3 — Lens



- Slide the metal sim card cover to the unlock position.
- Remove the sim card.
- ⓘ The arrows on the sim card enclosure indicate the lock and unlock positions.

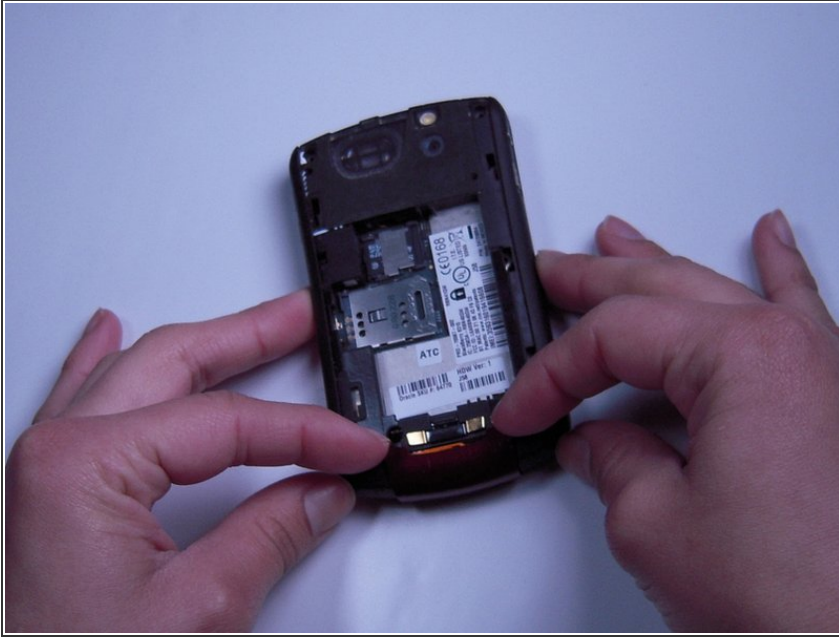
## Step 4



- Remove the two T5 Torx screws circled at the top of the phone.
- ⓘ The T5 Torx screws may be covered by a white sticker.



## Step 5



- Remove the red cover at the bottom of the phone.
- ⓘ You may have to work a spudger underneath to release the plastic clips.

## Step 6



⚠ Be careful not to damage the front cover's plastic clips while trying to separate it from the phone.

- Use a spudger to pry the front cover away from the side panels.
- Work the spudger around the entire phone until the front cover is free.

## Step 7 — Keyboard



- Remove the keyboard.

## Step 8 — Screen Housing



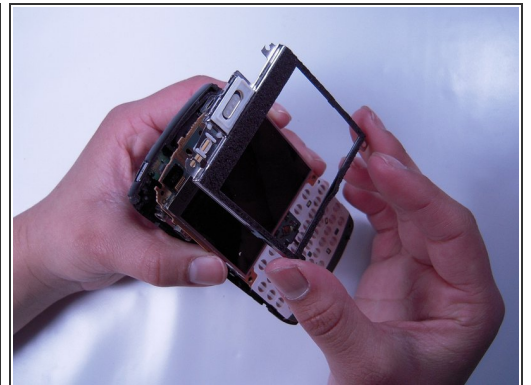
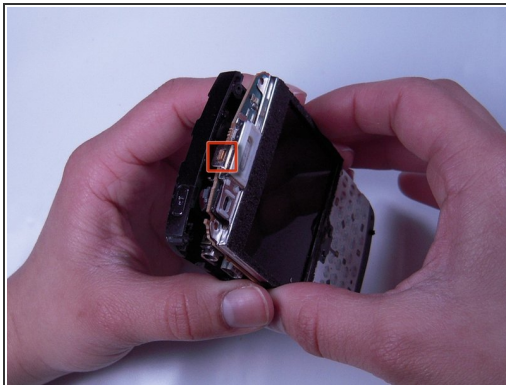
- Remove the four T6 Torx screws located on the corners of the keyboard frame.

## Step 9




- Now remove the left and right side panels.

## Step 10



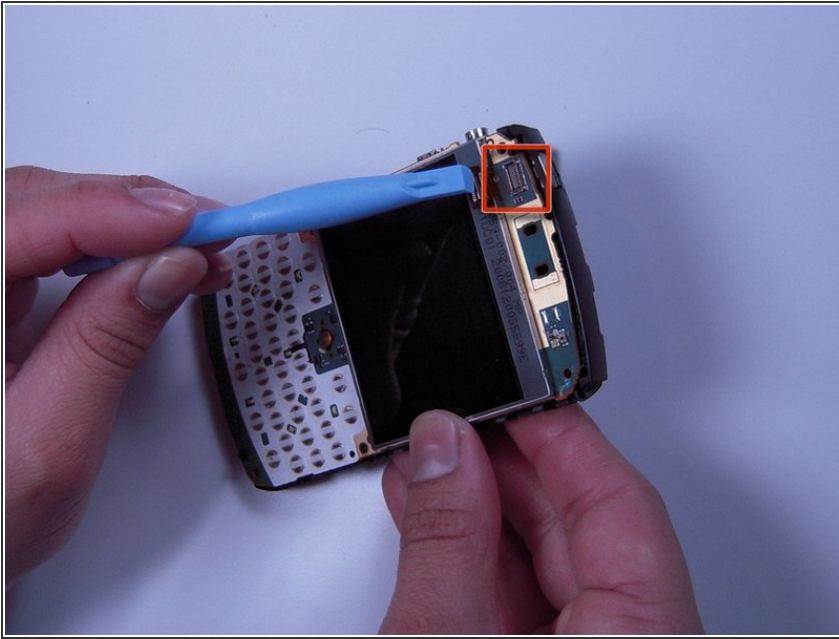
- Remove the keyboard frame.

 Be sure to unhook the screen housing from the motherboard before continuing. Refer to the square indicated in the second picture.

- Now remove the screen housing.

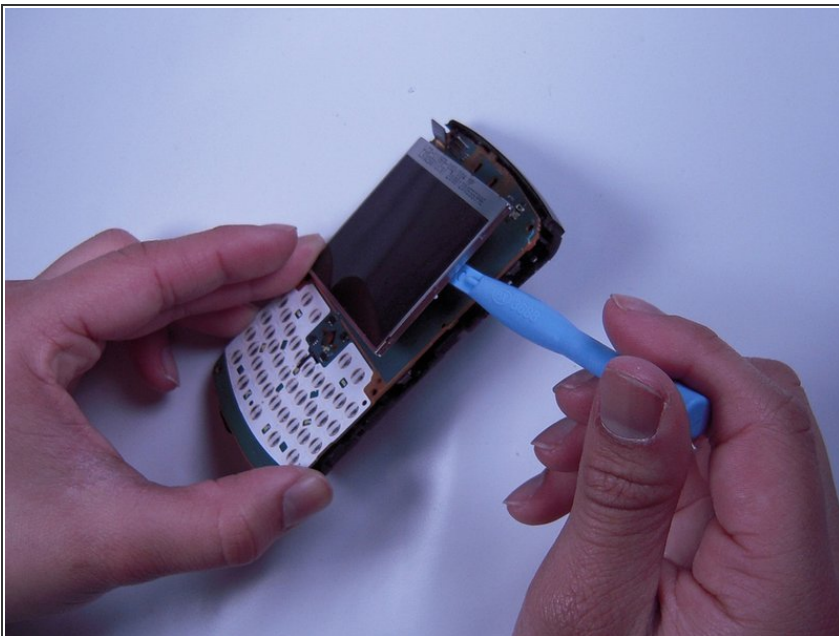


## Step 11 — LCD Screen



- Unplug the ribbon cable from the board.
- ⓘ The ribbon cable is located at the top left of the phone above the screen.

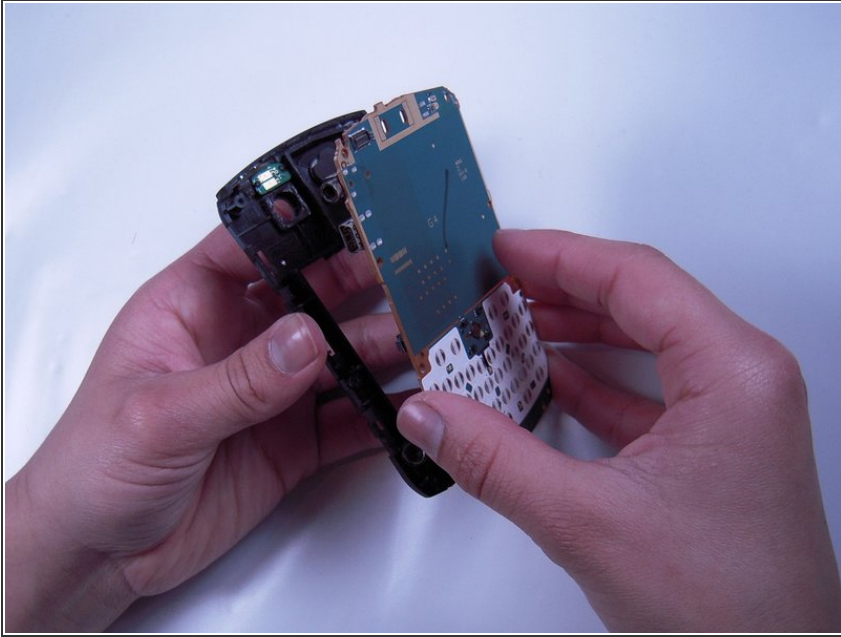
## Step 12



- Insert tool between LCD screen and board.
- Pry LCD screen from board.



## Step 13 — Motherboard



- Separate the motherboard from the back case.

To reassemble your device, follow these instructions in reverse order.