



Blackberry Curve 8320 Front Panel Replacement

This guide explains the disassembly of the Blackberry Curve 8320 to replace the front panel.

Written By: Christopher Aiello



INTRODUCTION

This guide will show you how to:

- Remove the battery
- Remove the front cover
- Replace the front panel



TOOLS:

- [iFixit Opening Tools](#) (1)
 - [T5 Torx Screwdriver](#) (1)
-

Step 1 — Battery



- ① Hold the phone with the back facing you.
- Press the silver tab down and remove the cover.

Step 2



- Pull up on the top edge of the battery to remove it.

Step 3 — Front Panel



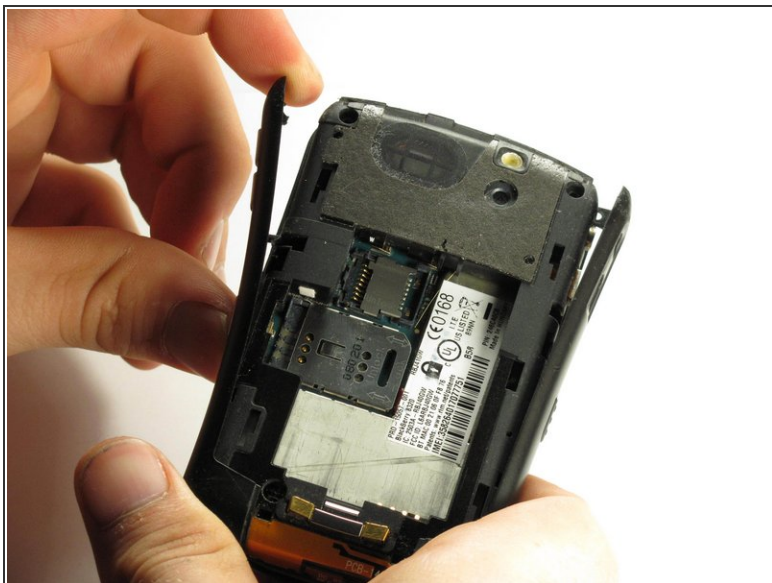
- Use a plastic opening tool to gently pry the bottom cover loose.
- ⚠ Do not use excessive force at risk of damaging the antenna, which is under this casing.
- Pull the cover from the front of the phone after the back is loose.

Step 4



- Remove the two top screws with a T5 Torx screwdriver.
- i** The screws are 8mm long.

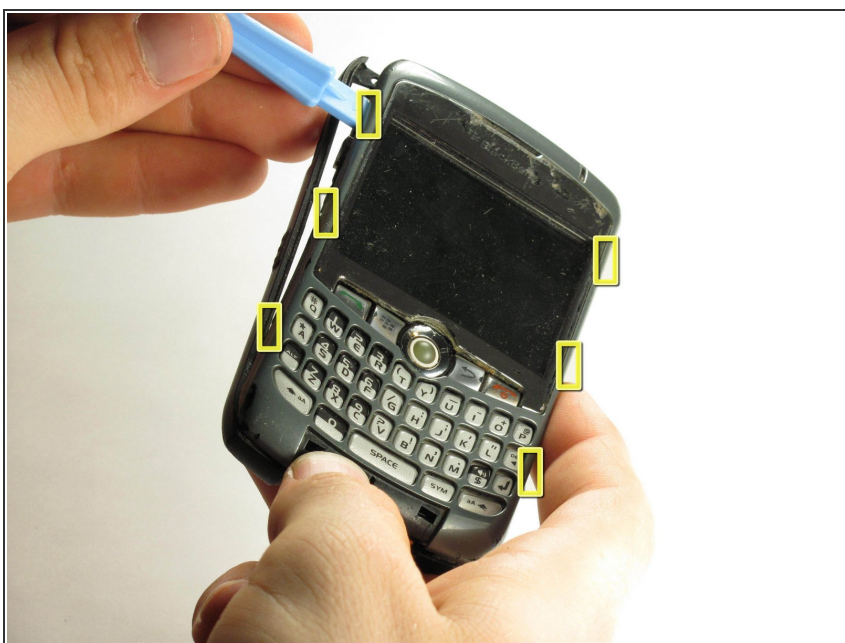
Step 5



- Gently pry off the top of the side casings.

⚠ The side casings cannot be fully removed yet because they are screwed on at the bottom.

Step 6



- Use a plastic opening tool to detach the securing clips holding the the front panel in place.

ⓘ There are six securing clips total.

Step 7



- Remove the front panel.

ⓘ You may need to apply some force because the front panel is attached to the rest of the device with adhesive.

To reassemble your device, follow these instructions in reverse order.