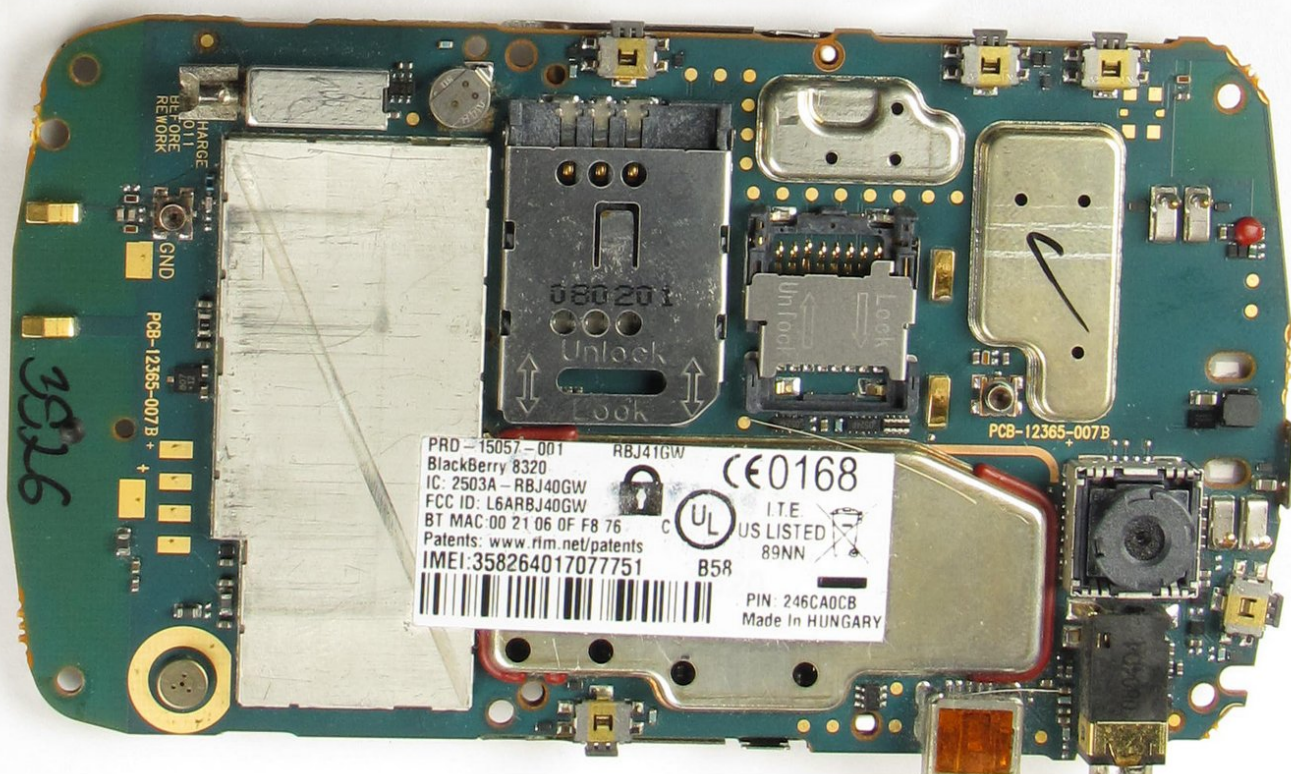




BlackBerry Curve 8320 Motherboard Replacement

This repair guide details the disassembly of the phone down to the motherboard.

Written By: Yegor Pomortsev



INTRODUCTION

This guide will show you how to:

- Remove the battery
- Remove the front panel
- Remove the LCD screen
- Replace the motherboard



TOOLS:

- [iFixit Opening Tools](#) (1)
 - [T5 Torx Screwdriver](#) (1)
 - [T6 Torx Screwdriver](#) (1)
-

Step 1 — Battery



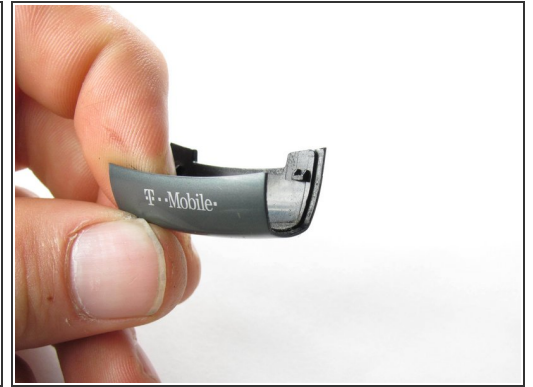
- ① Hold the phone with the back facing you.
- Press the silver tab down and remove the cover.

Step 2



- Pull up on the top edge of the battery to remove it.

Step 3 — Front Panel



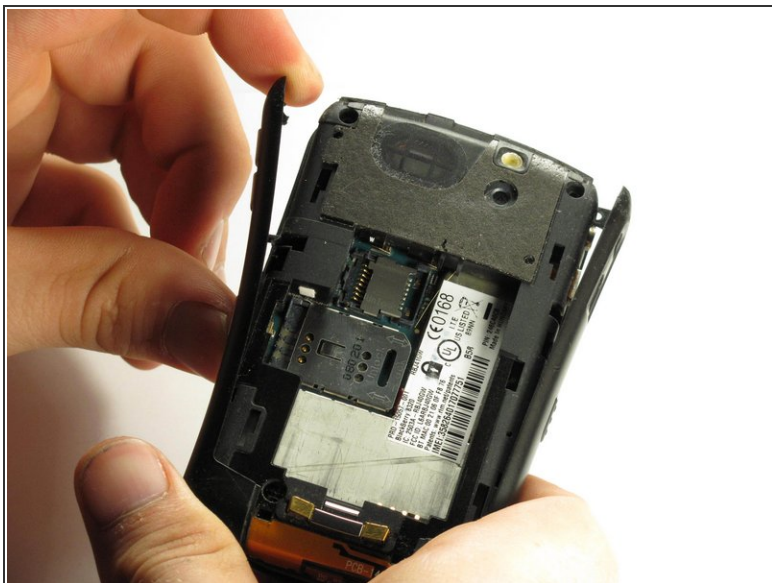
- Use a plastic opening tool to gently pry the bottom cover loose.
- ⚠ Do not use excessive force at risk of damaging the antenna, which is under this casing.
- Pull the cover from the front of the phone after the back is loose.

Step 4



- Remove the two top screws with a T5 Torx screwdriver.
- i** The screws are 8mm long.

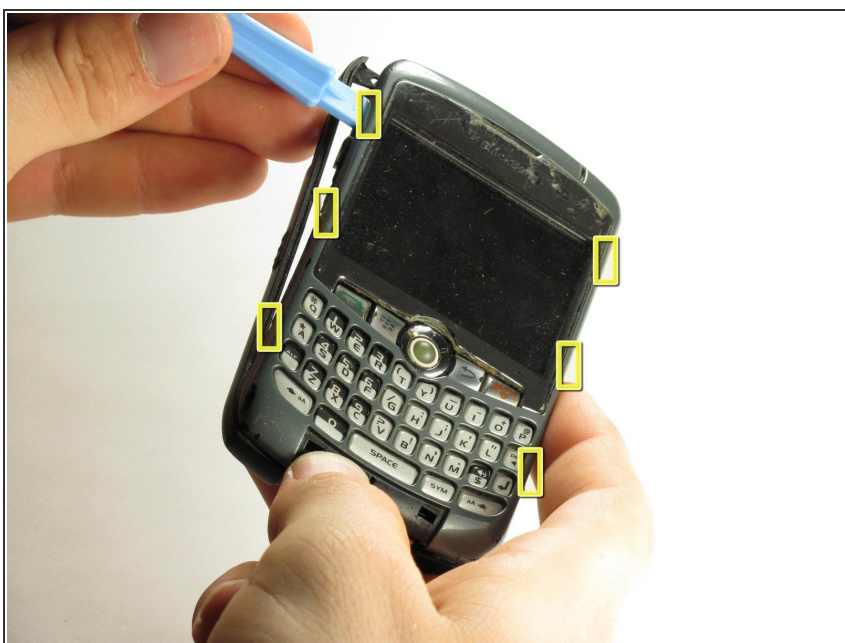
Step 5



- Gently pry off the top of the side casings.

⚠ The side casings cannot be fully removed yet because they are screwed on at the bottom.

Step 6



- Use a plastic opening tool to detach the securing clips holding the the front panel in place.

ⓘ There are six securing clips total.

Step 7



- Remove the front panel.

i You may need to apply some force because the front panel is attached to the rest of the device with adhesive.

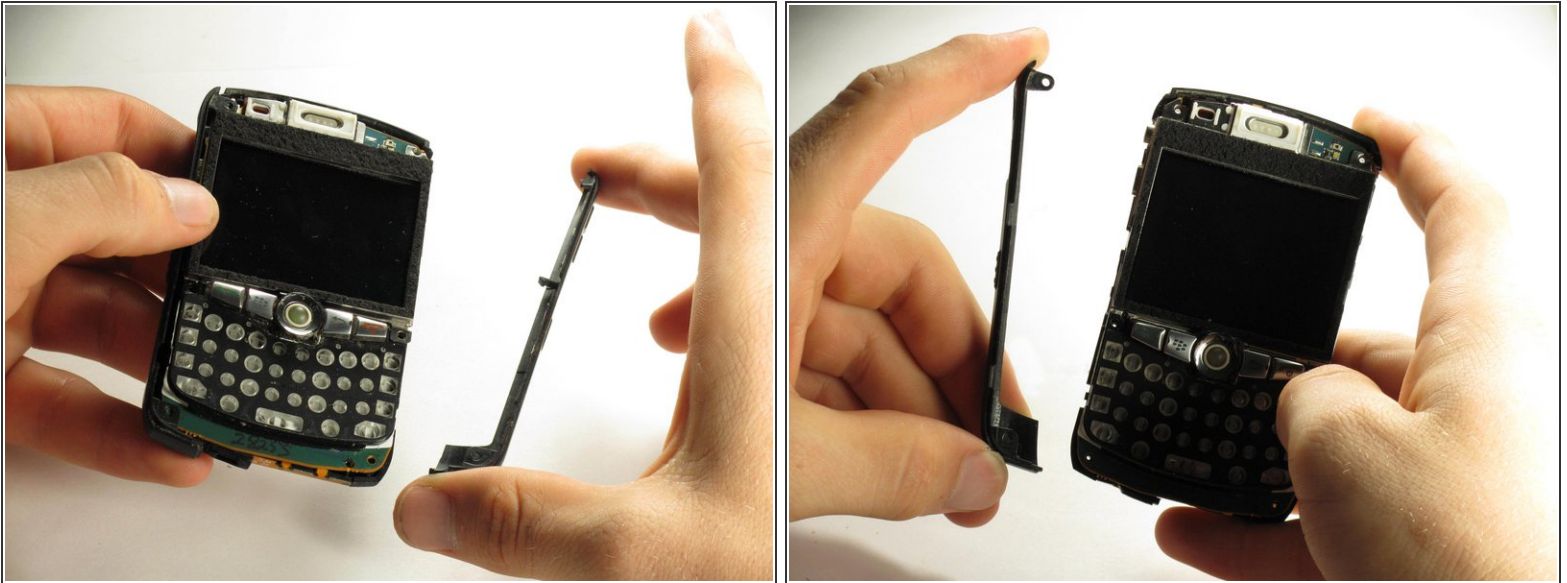
Step 8 — LCD Screen



- Use a T6 Torx screwdriver to remove the four screws located on the corners of the keyboard frame.

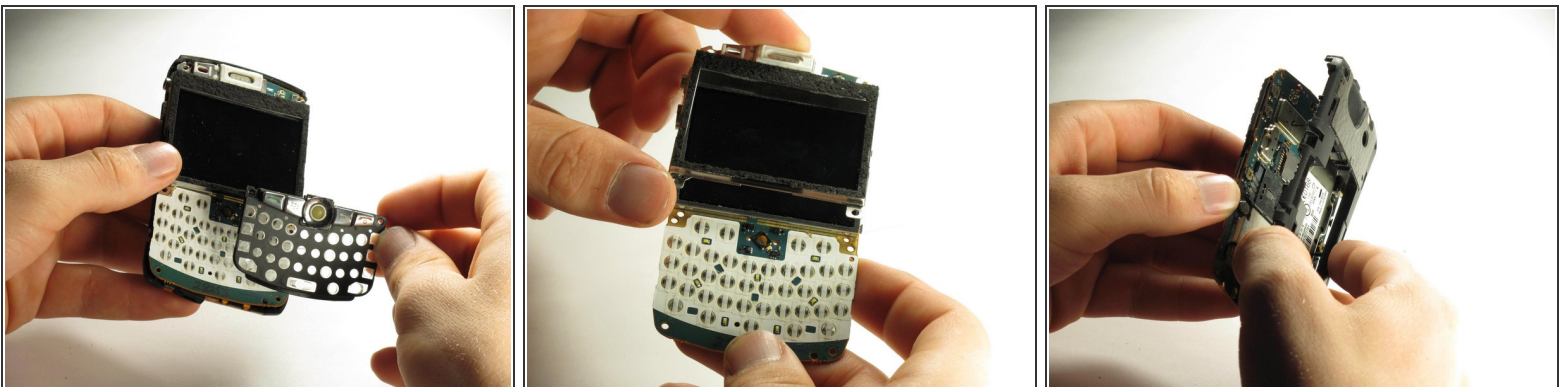
i The screws are 6mm long.

Step 9



- After the bottom two screws have been removed the side casings can be removed.

Step 10




- When all four screws are removed, the keyboard frame, screen housing, screen, and back casing can be separated.

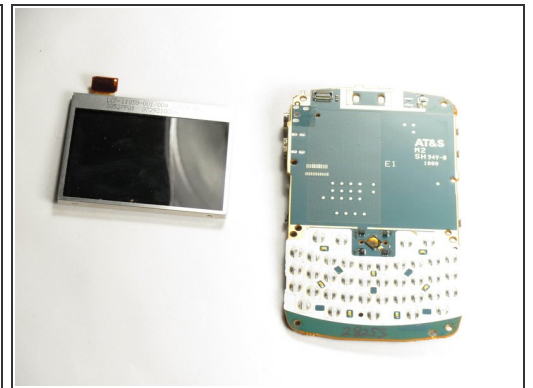
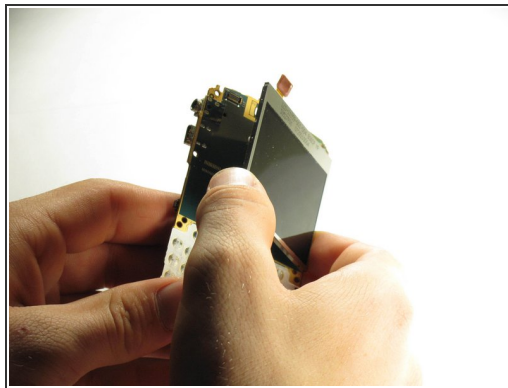
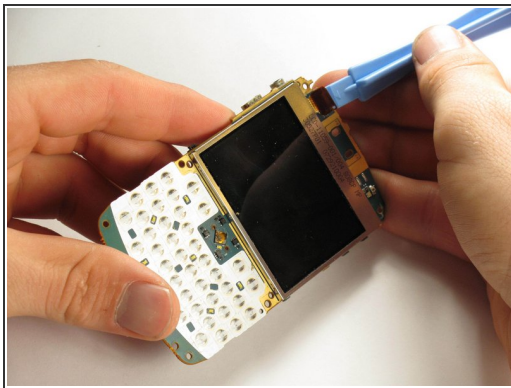
- ☑ The screen frame hooks on to the top of the motherboard with a small tab on the motherboard.


Step 11



-  Place the motherboard on a flat surface with the LCD screen face up.

Step 12



- Using a plastic opening tool, gently pull the connector directly up from the motherboard.
- Remove the LCD screen from the motherboard.
-  The screen is attached to the motherboard with adhesive.

Step 13 — Motherboard



- i** This is your motherboard. If you have a problem with it you should get a replacement from your phone provider.
- i** Many motherboard related issues may be solved by simply cleaning the motherboard contacts with a cotton swab and highly concentrated rubbing alcohol.

To reassemble your device, follow these instructions in reverse order.