



Blackberry RIM 7250 Side Button Replacement

This guide will show how to remove the side button in the Blackberry RIM 7250.

Written By: Noah Eckert



INTRODUCTION

This guide will be useful in replacing the side button for the Blackberry RIM 7250. For this guide, you will need a plastic opening tool and a Torx #6 screwdriver head.

TOOLS:

- [T6 Torx Screwdriver](#) (1)
 - [iFixit Opening Tools](#) (1)
-

Step 1 — Battery



- Push the release button down and away from the device.
- Slide the cover off toward the bottom of the device, revealing the battery compartment.

Step 2



- Place your finger in the groove next to the battery.
- Lift your finger up to eject the battery from the battery compartment.

Step 3



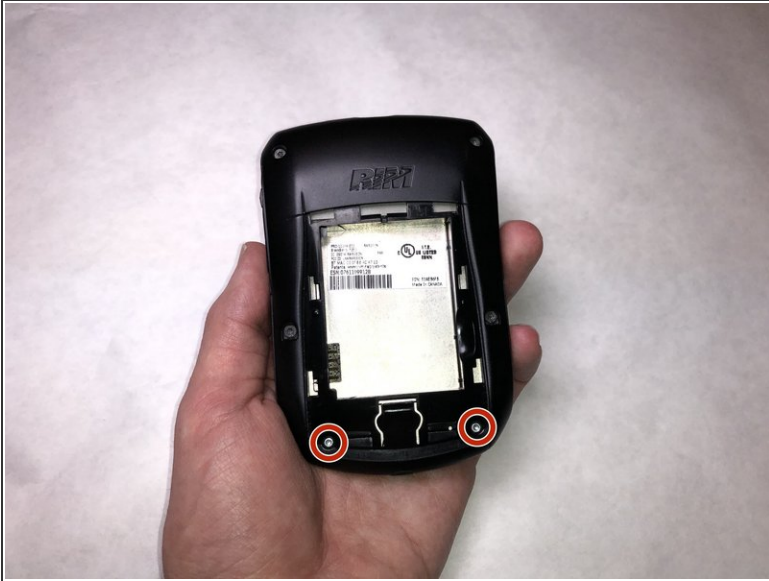
- Remove the battery from the compartment.

Step 4 — Back Housing



- Remove the four 10.7 mm Torx T6 screws.

Step 5



- Remove the two 5 mm Torx T6 screws.

Step 6



- Hold the phone with one hand, with the bottom facing toward you.
- For both clips, insert the plastic opening tool and push away from you.
- ⓘ You will hear a clicking sound for each clip that is released.

Step 7



- Grab the back housing from the bottom and lift the housing away from you.

Step 8 — Front Housing



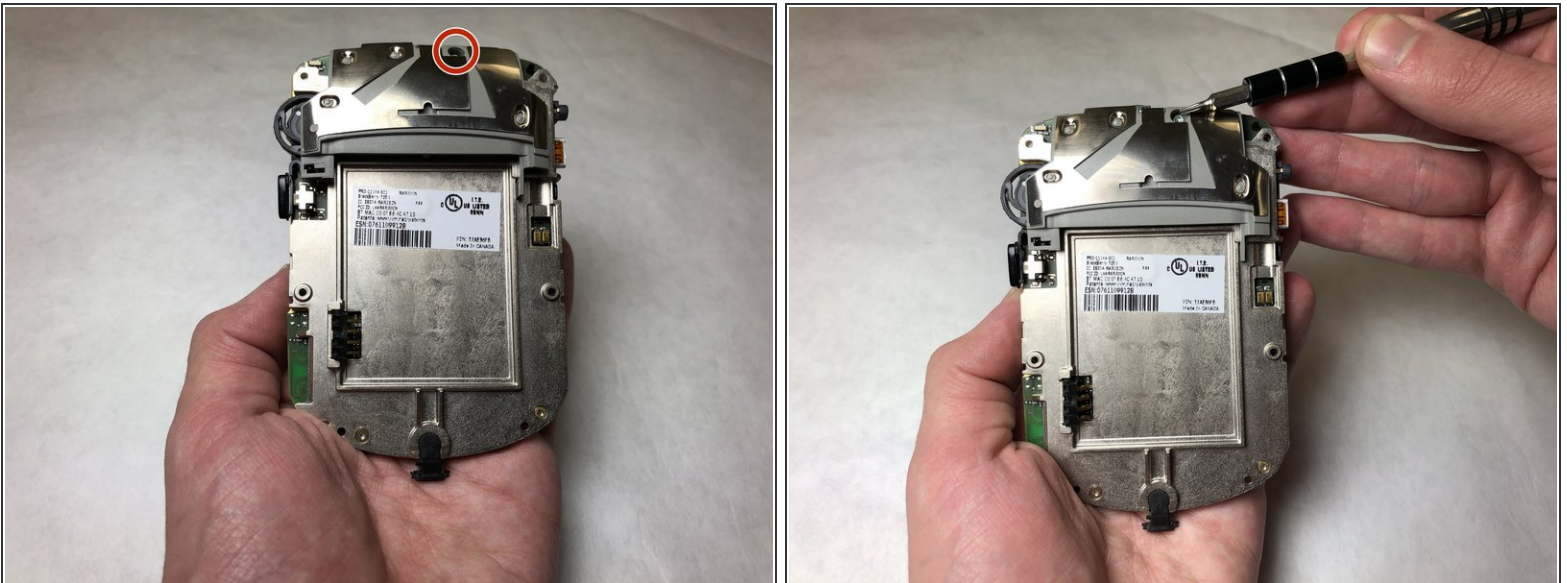
- Place your thumb on the bottom rectangle and your index finger on the top rectangle.
- Squeeze your fingers together to release the internals from the front housing.

Step 9



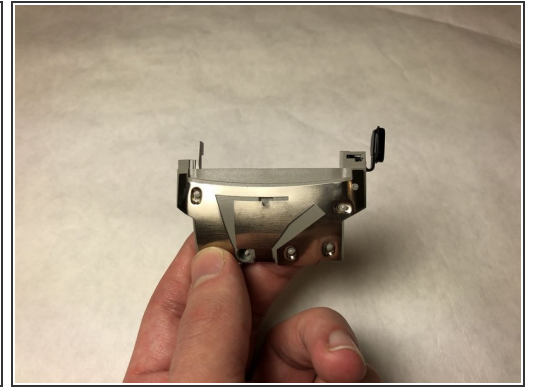
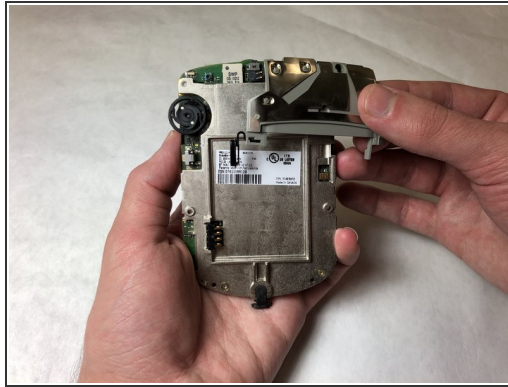
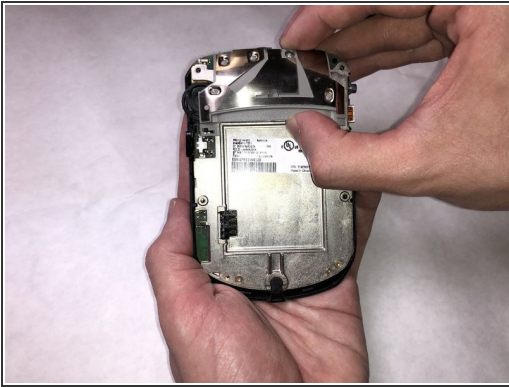
- Pull the two pieces apart to separate the front housing from the internals.

Step 10 — Side Button



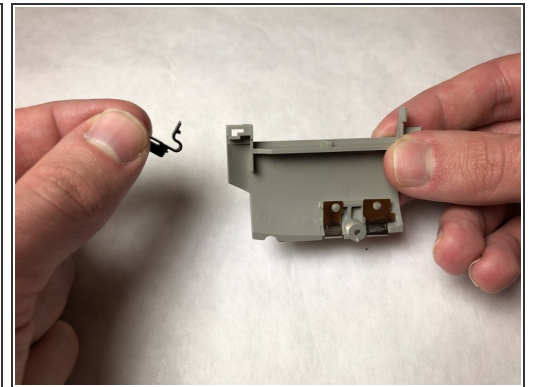
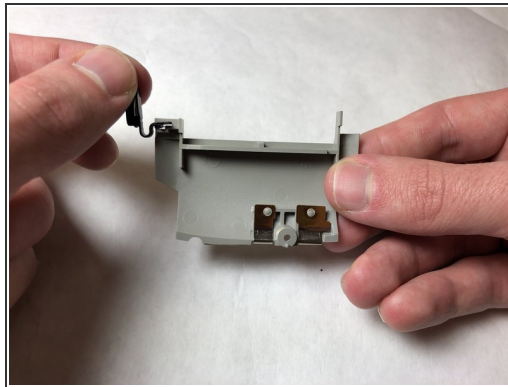
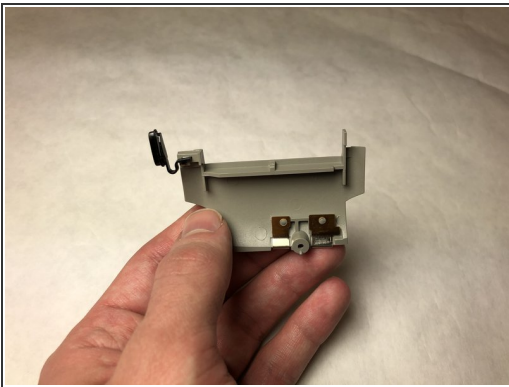
- Remove the single 5 mm Torx T6 screw.

Step 11



- Grab side button housing with your thumb and index finger.
- Remove the side button housing from the internals.

Step 12



- Hold the side button housing with one hand and hold the side button with the other.
- Lift the side button from side button housing.
- ⓘ There will be a subtle click when the side button is detached from the side button housing.

To reassemble your device, follow these instructions in reverse order.