



Blackberry Torch 9800 Logic Board Replacement

Written By: Keegan Williams



INTRODUCTION

This guide takes you through the steps to remove a logic board in a Blackberry Torch 9800. Installing the new logic board is the same process, in reverse. This project will void your phone warranty.



TOOLS:

- [T6 Torx Screwdriver](#) (1)
 - [iFixit Opening Tools](#) (1)
-

Step 1 — Logic Board Replacement




- Remove the back cover and the battery.
 - Unscrew the four screws using a T6 screwdriver.
- ⚠ Removing the top right screw (with the blue cover) will void the warranty.

Step 2



- Remove the side trim using the plastic opening tool.
- Apply pressure to push the top side of the side trim towards the phone while pulling the bottom away from the phone to remove the side trim.

 The side trim is fragile and easily fractured, so handle it with care.

Step 3



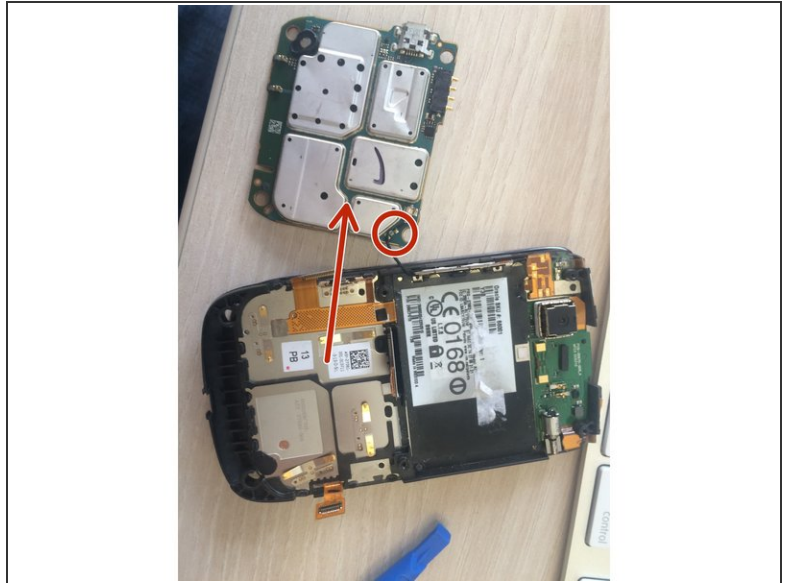
- Remove the two screws that have been revealed at the top of the device using the T6 screwdriver.
- You should now be able to easily lift the back panel from the phone.

Step 4



- Using your hands, carefully peel the three ribbon cable caps from the logic board.

Step 5



- Lift logic board slightly. The logic board will remain attached to the phone by a small antenna wire.
 - Using your hands, carefully lift the clasp attached to the antenna wire straight upward away from the logic board.
- ⚠ Make sure not to disconnect the antenna wire from its clasp.
- The logic board should now be completely separate from the phone.

To reassemble your device, follow these instructions in reverse order.