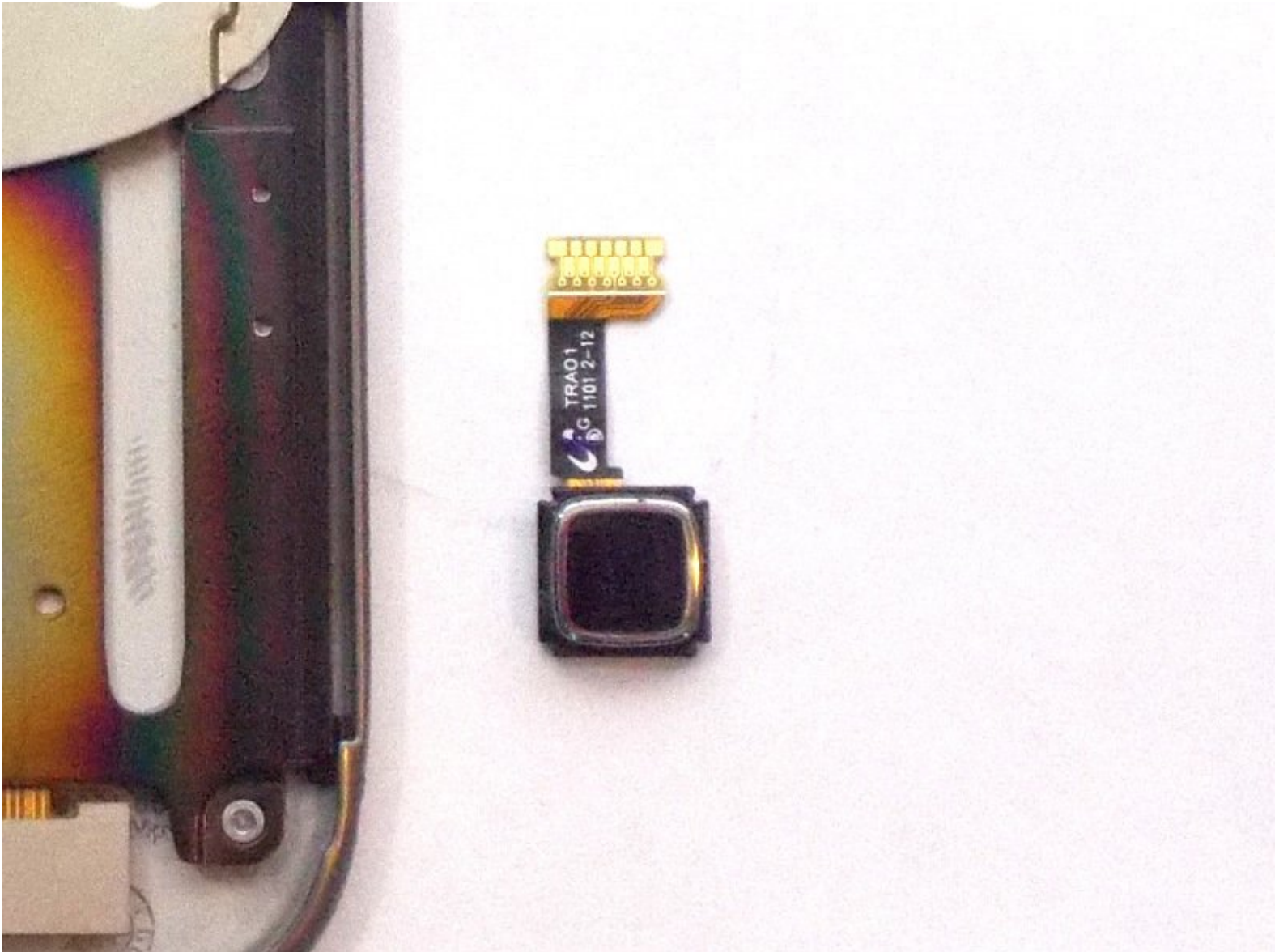




# Blackberry Torch 9810 Cursor Key Replacement

This guide will show you how to replace your cursor key

Written By: Jocelyn Adorno





## TOOLS:

- [iFixit Opening Tools](#) (1)
- [T4 Torx Screwdriver](#) (1)
- [T6 Torx Screwdriver](#) (1)

## Step 1 — Phone cover



- Remove the back cover of the phone

## Step 2 — Battery



- Remove the battery



### Step 3 — Remove screws



- Unscrew the four screws using the T6 screw driver.

⚠ If you remove the screw in red, you void the warranty!

### Step 4 — Wiggle Wiggle



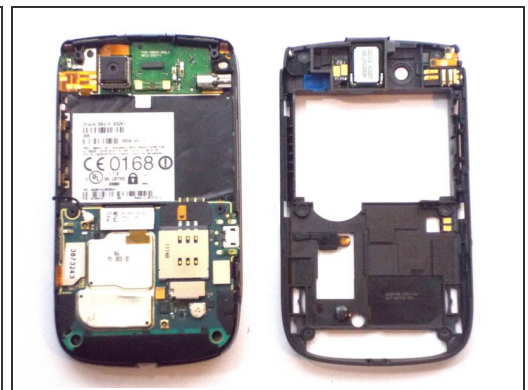
- Slide the screen up.
- Remove front silver trim by using a plastic opening tools and wiggle it off.
- ⓘ This is difficult to remove, but it should come off if you do it with caution.

## Step 5 — More screws that need to go



- Once you remove the rim cover, you should find two more screws on the top. Unscrew them with a T-6 screw driver.

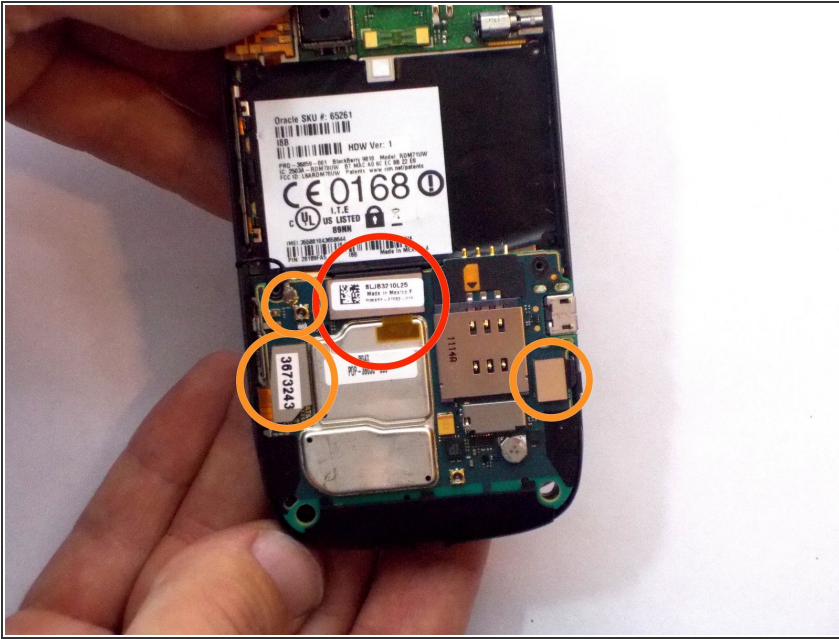
## Step 6 — Remove the Back



- Use the plastic opening tools to remove the entire back off the phone.



## Step 7 — Remove Ribbon Cables



- Remove the three ribbon cables and the antenna wire by hand.
- The cable in red is glued to the metal cap. Peel it upwards towards the battery compartment.

## Step 8 — Remove Logic Board



- The logic board will easily pull straight out.

## Step 9 — Remove Informational Sticker



- Remove the black sticker located above the logic board that contains the phone's serial number

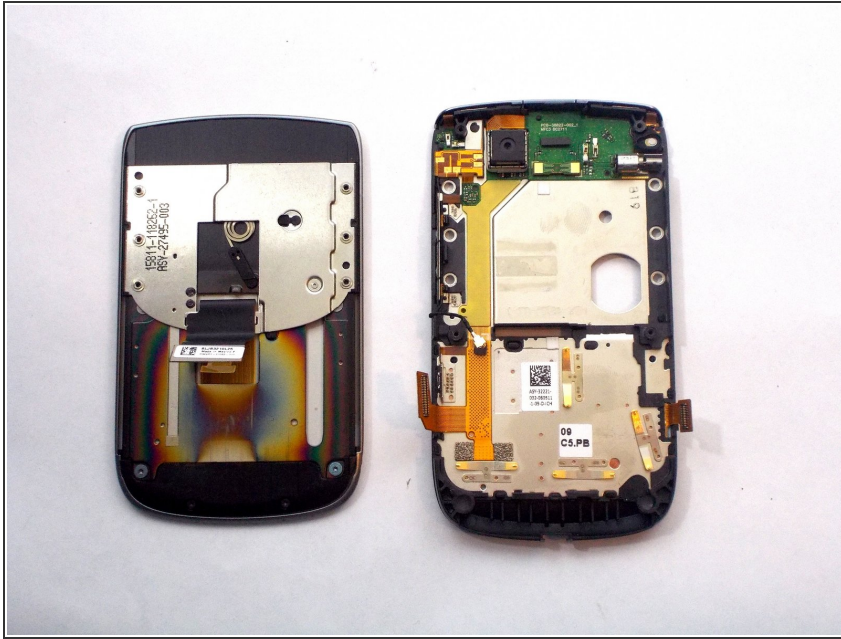
## Step 10 — Remove More Screws



- Behind the black sticker you should find six small yellow screws. Remove them with a T4 torx screwdriver.



## Step 11 — Separate the phone



- Carefully separate the screen from the body.

⚠ Make sure to be extra careful with the ribbon!

## Step 12



- Slide the silver plate up and you should find four more screws that need to be removed. Use a T-4 screw driver.
- They are on a black cover located on the bottom of the phone. The black cover will come off

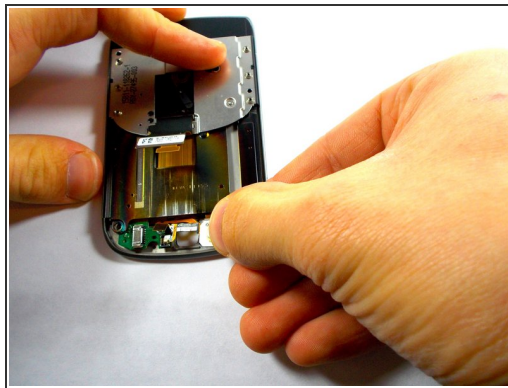


## Step 13 — Carefully Remove a Ribbon



- There is one last orange ribbon cable that needs to be pulled and behind it is the cursor

## Step 14 — Cursor Key



- Push the cursor upwards and out of the socket.
- Gently pull out the white box by pulling straight out of the socket to the right. This is your cursor

To reassemble your device, follow these instructions in reverse order.