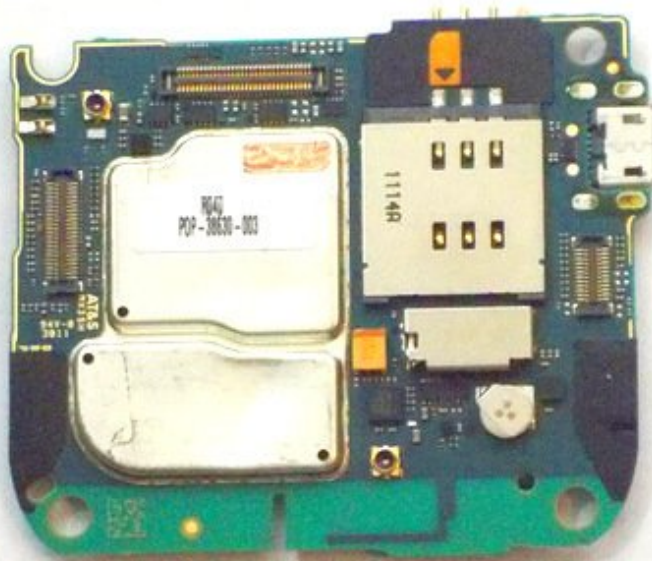




# Blackberry Torch 9810 Motherboard Replacement

This guide will show you how to replace a bad logic board

Written By: Jocelyn Adorno





## TOOLS:

- [T4 Torx Screwdriver](#) (1)
- [T6 Torx Screwdriver](#) (1)
- [iFixit Opening Tools](#) (1)

## Step 1 — Phone cover



- Remove the back cover of the phone

## Step 2 — Battery Removal



- Remove the battery

### Step 3 — Remove Screws



- Unscrew the four screws using the T6 screw driver

⚠ If you remove the screw in red, you void the warranty!

### Step 4 — Wiggle Wiggle



- Remove front silver trim by using plastic opening tools and wiggle it off.

**i** This is difficult to remove, but it should come off if you do it with caution.

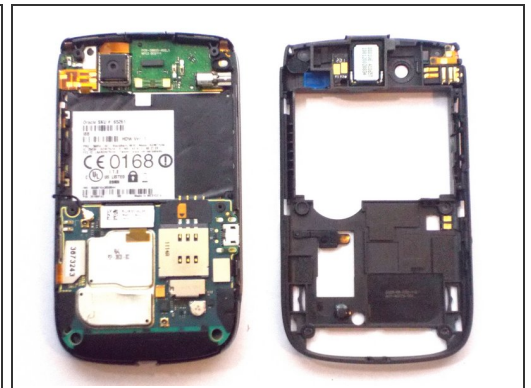


## Step 5 — More Screws



- Once you remove the rim cover, you should find two more screws on the top. Unscrew them using the T6 screw driver.

## Step 6 — Remove the Back



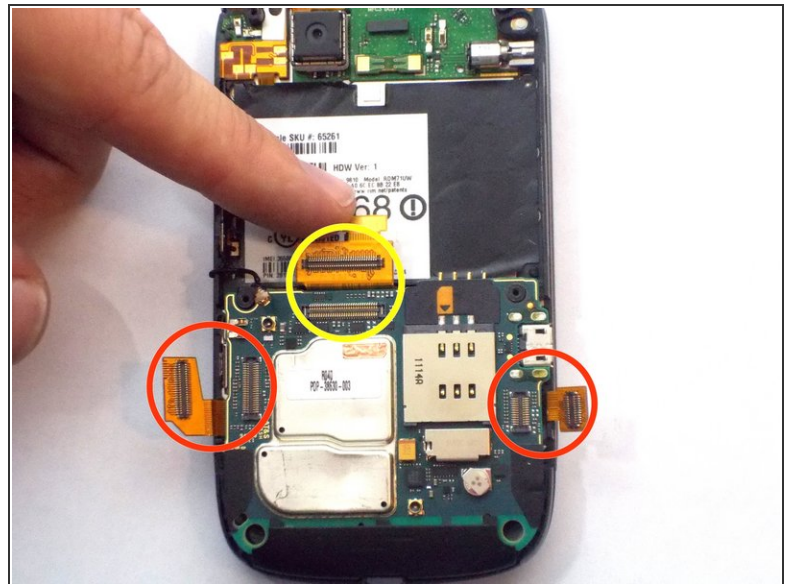
- Use the plastic removal tool to remove the entire back cover.

## Step 7 — Small Antenna Wire



- Unplug the black antenna wire from the logic board.

## Step 8 — Remove Ribbon Cables



- Peel off the three ribbon cables
  - ⓘ They are orange and located on each side as well as on the top of the logic board
- The cable circled in yellow is glued to the silver cap. Pull the ribbon cable upward towards the battery area.

## Step 9 — Logic Board



- Take out your logic board

To reassemble your device, follow these instructions in reverse order.