



Blackberry Torch 9810 Rear Facing Camera Replacement

After finishing your guide, your broken camera should not be a problem!

Written By: Jocelyn Adorno





TOOLS:

- [T4 Torx Screwdriver](#) (1)
- [iFixit Opening Tools](#) (1)
- [T6 Torx Screwdriver](#) (1)
- [Phillips #0 Screwdriver](#) (1)

Step 1 — Remove Cover



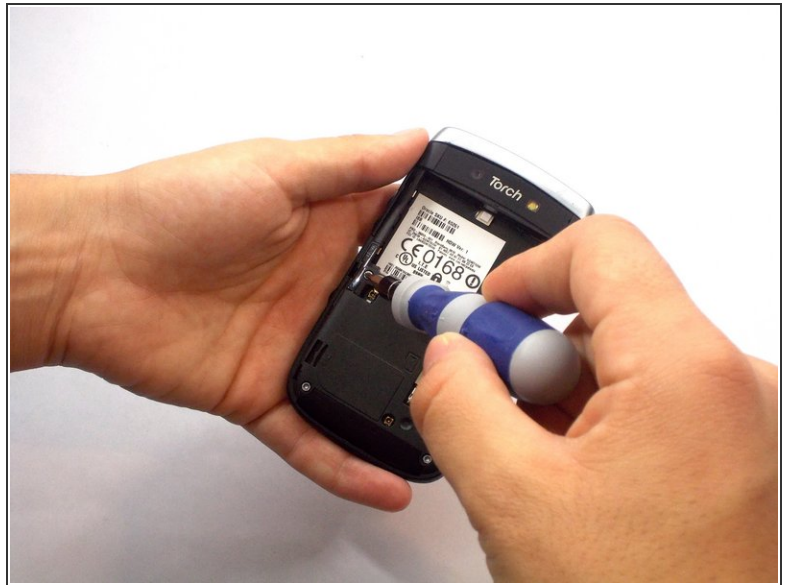
- Remove the back cover of the phone

Step 2 — Remove Battery



- Remove the battery
- ⓘ Our phone did not come with a battery. This is where it would be located.

Step 3 — Unscrew Screws



- Unscrew the four screws using the T6 screw driver

⚠ If you remove the screw in red, you void the warranty!

Step 4 — Wiggle Wiggle



- Remove front silver trim by using plastic opening tools and wiggle it off.

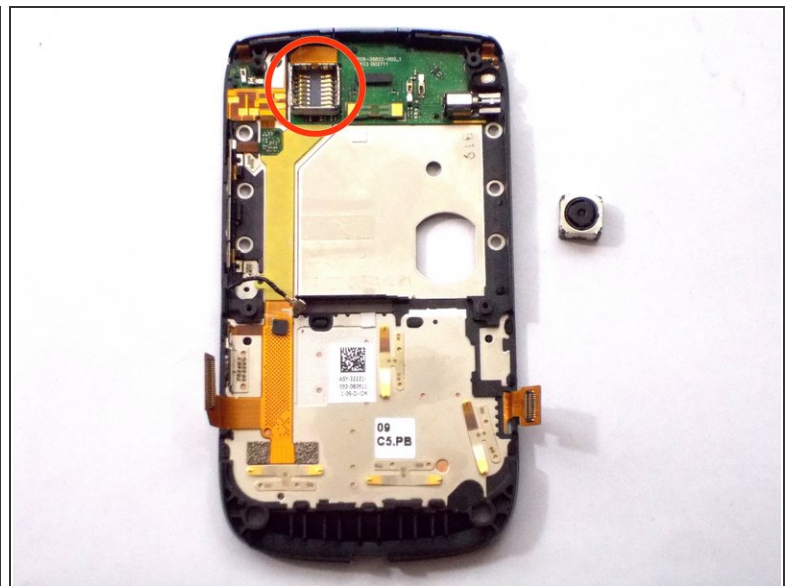
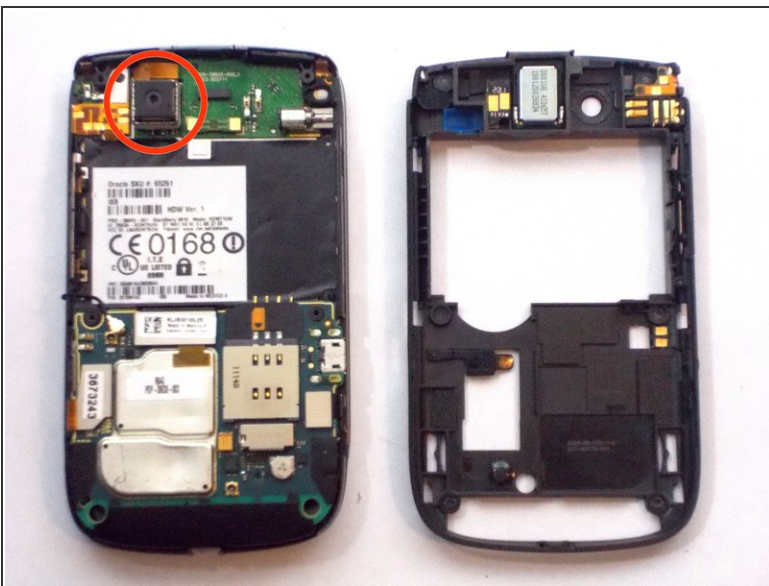
i This is a little difficult to remove. Pull the bottom upward and pull the top downward.

Step 5 — Smaller Screws That Must Go




- Once you remove the rim cover, you should find two more screws on the top. Unscrew them using the T6 screw driver.

Step 6 — Camera Sensor



- Use the Phillip screw driver to wiggle the camera sensor out.

 Carefully remove this

To reassemble your device, follow these instructions in reverse order.