



# Block Head Hit Kit Pedal Spring Replacement

Replace the spring in your Block Head Hit Kit Pedal.

Written By: Luis Lopez



## INTRODUCTION

Are you unable to play Rock Band again because of the busted drum pedal? Replace the spring and re-unite the band with this easy-to-follow guide!



### TOOLS:

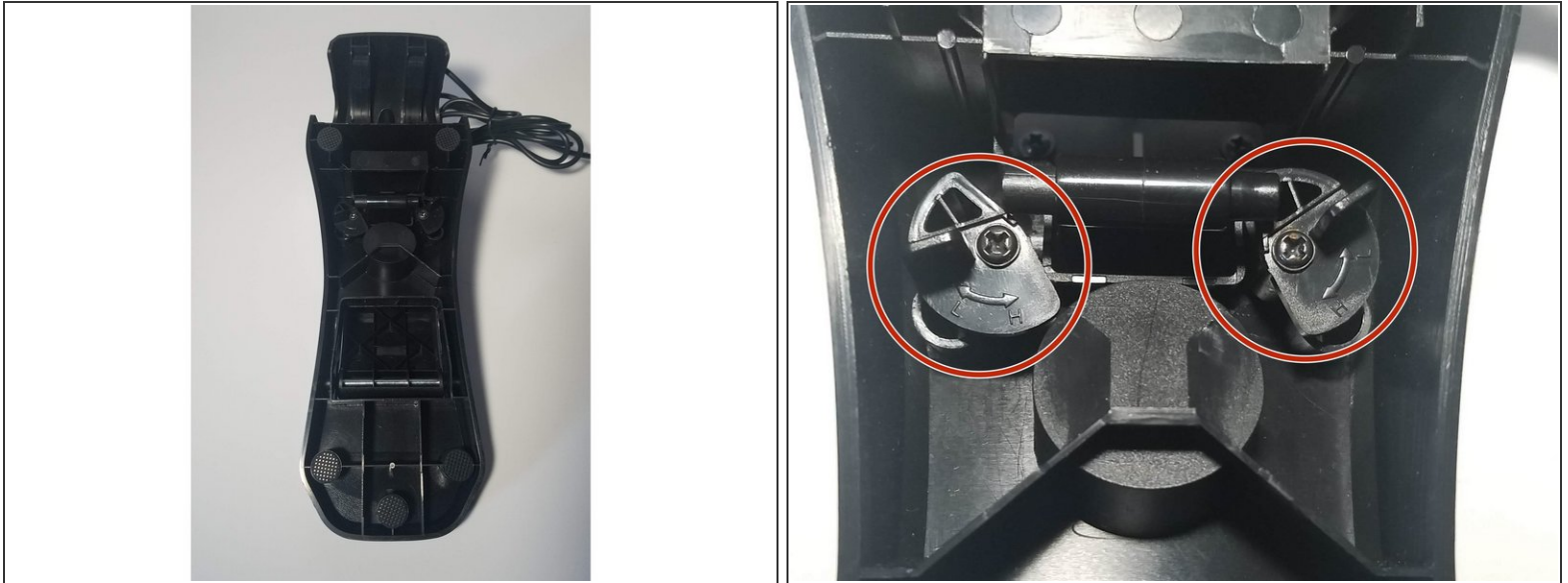
- [Phillips #1 Screwdriver](#) (1)




### PARTS:

- [1/2 in. L x 1/4 in. D Compression Spring](#) (1)

## Step 1 — Remove the Spring



 Before beginning, disconnect the 3.5mm plug from the drum set console.

- Turn the drum pedal on it's back and locate the two 3 mm Phillips screws near the center of the device.

## Step 2



- Using a [Phillips #1 Screwdriver](#):
  - Remove the **two** 3 mm Phillips screws.
- ⓘ Make sure to store the screws in a secure place. If you have a knack for losing small parts, grab an [iFixit Magnetic Project Map](#).

### Step 3



- Push both levers inward with your fingers to release the bar from the top pedal.

### Step 4



- Now for the fun part. Push the pedal bar up and then down the opening.
  - ⓘ Just a heads up! The spring is going to pop off; so be ready for a jump.
- Did you feel that? The release of the tension from the spring automatically popped the spring off.

## Step 5



- Turn the device over to its upright position.
- Remove the used spring and gently lower the pedal down to its neutral position.

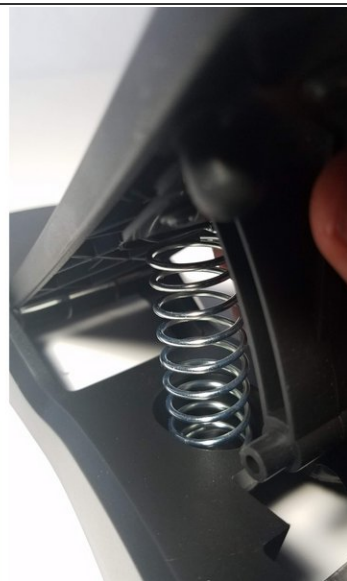
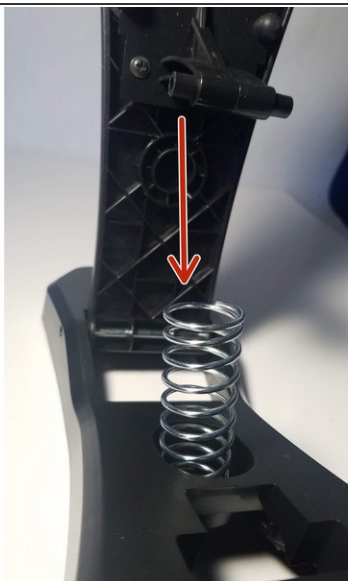
## Step 6 — Install the Spring



- Grab your 1/2 in. L x 1/4 in. D Compression Spring and insert it into the circular base on the base of the pedal.



## Step 7



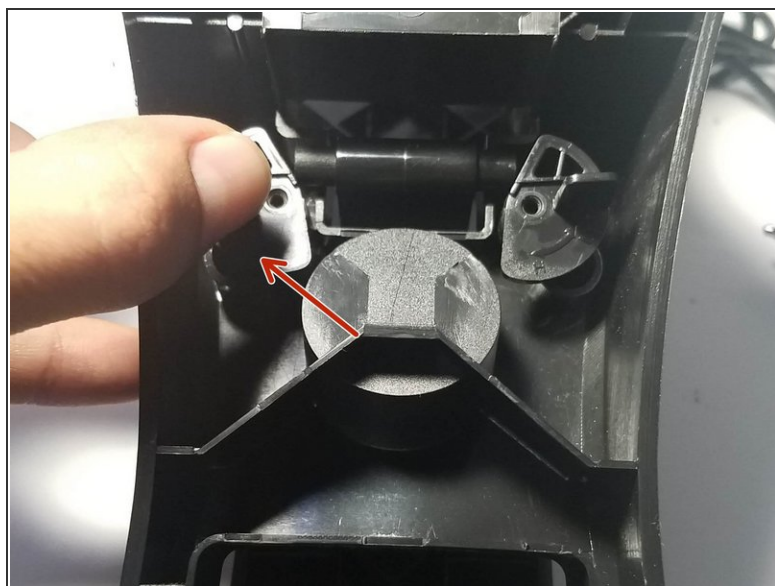
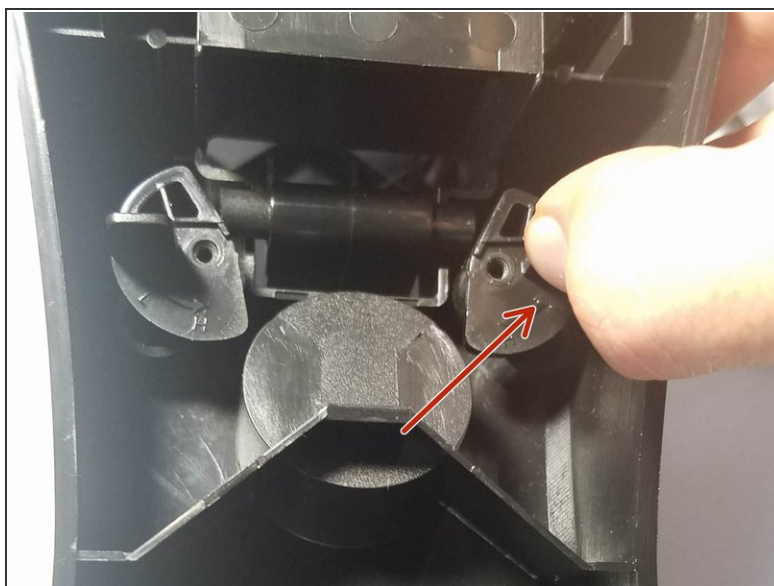
- Carefully push down on the pedal and align the spring into the circular mount on the bottom of the top pedal.

## Step 8



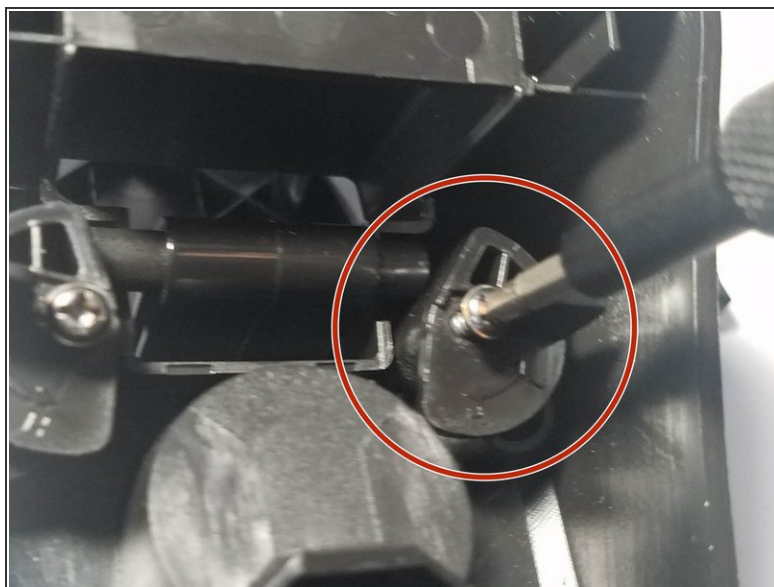
- Once the spring is aligned, gently push the pedal down until you hear the bar snap into place.

## Step 9



- Turn the device on its back once more and push the levers inward to secure the bar pedal into place.

## Step 10



- Using a [Phillips #1 Screwdriver](#):
  - Screw **both** 3 mm Phillips screws back into place.

## Step 11 — Test the Pedal



- Connect the Hit Kit to the drum set and boot up your console. Test the pedal at each of the three adjustable heights and jam on!

That's it! You've repaired your own Hit Kit pedal and are ready for stardom!