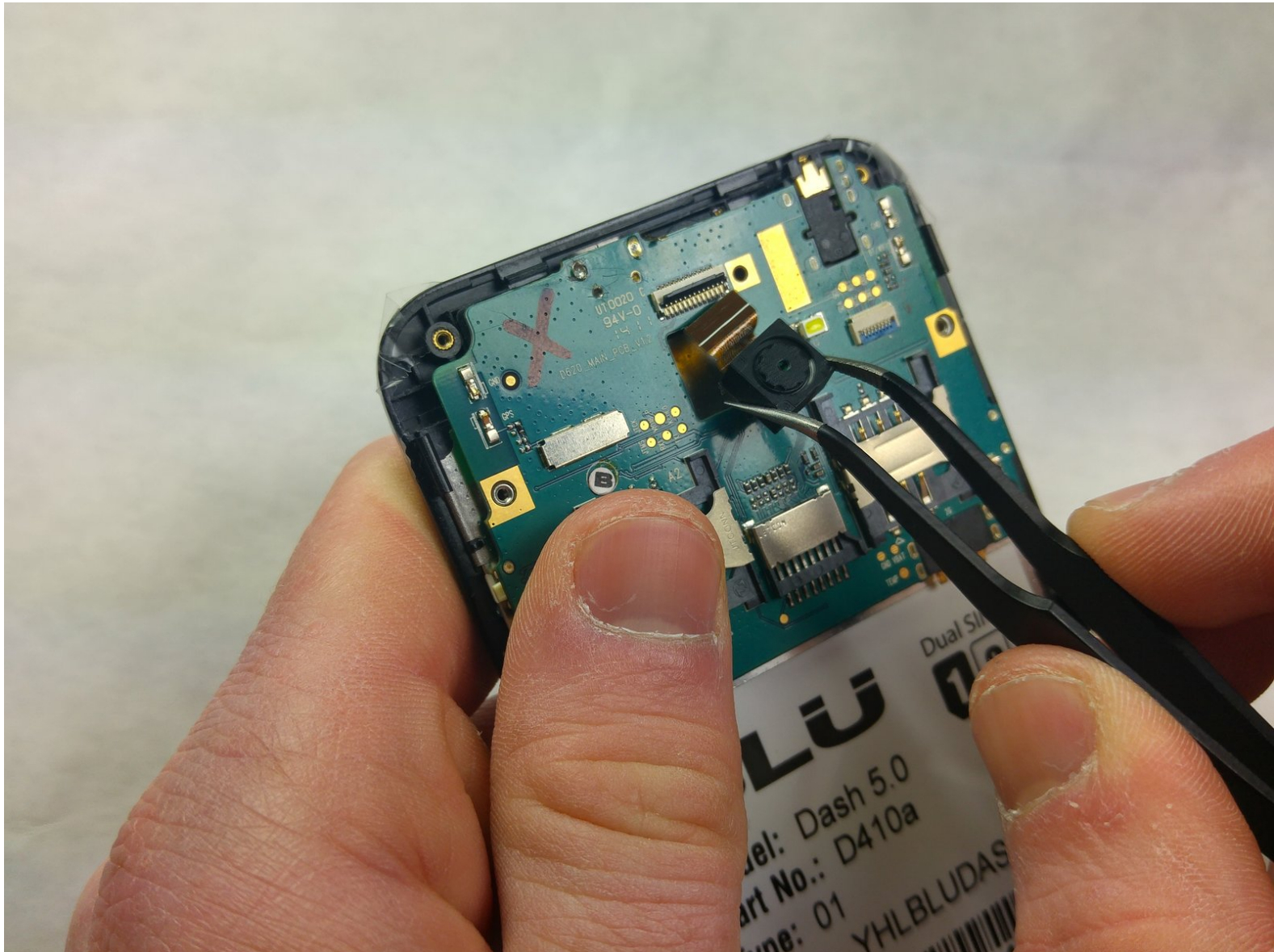




Blu Dash 5.0 Dual SIM Back Camera Replacement

Blu Dash 5.0 Dual SIM Back Camera Replacement.

Written By: Mukish Kumar Munyady



INTRODUCTION

Be prepared with the tools listed and also be cautious while going through the steps in this guide as the phone components are quite fragile.



TOOLS:

- [Spudger](#) (1)
 - [JIS Driver Set](#) (1)
- J000
- [iFixit Opening Tools](#) (1)
-

Step 1 — Back Camera



 Make sure device is disconnected and turned off.

- Locate the groove on the bottom left corner of the back of the phone.
- Insert the plastic opening tool into the groove and pry it open.
- Lift the back cover of the phone using your hands.

Step 2



- Pry the battery out using the plastic opening tool.

Step 3



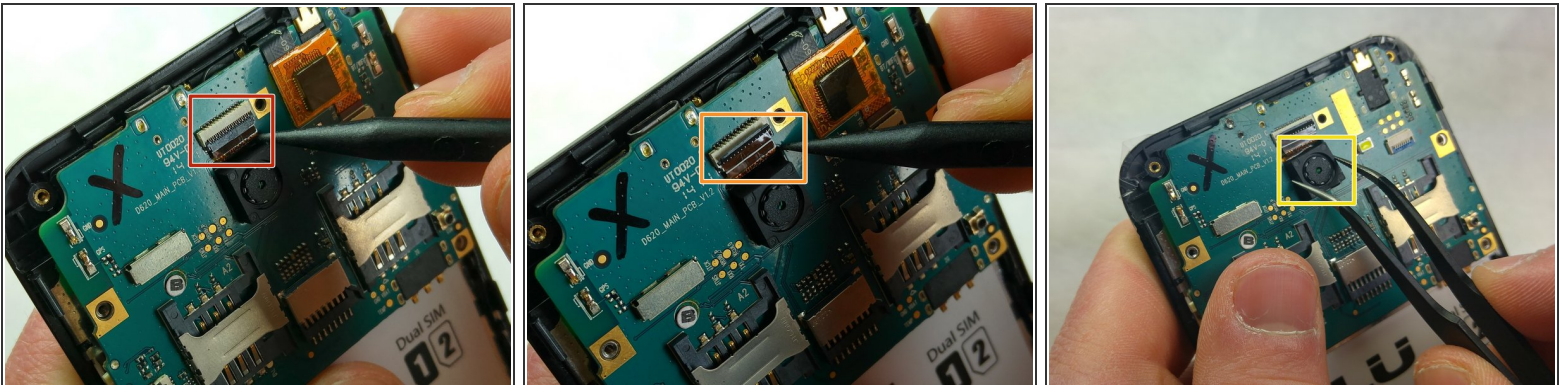
- Remove the 12 screws on the back panel using a J000 screwdriver.
- Red circles correspond to the screw holes holding 3.5 mm length Phillips screws.
- Orange circles correspond to the screw holes holding 2.5 mm length Phillips screws.

Step 4



- Peel off the back panel with your hand.
- ⚠ Remove the back panel slowly to avoid breaking it.

Step 5



- Flip up the ZIF flap using the spudger.
 - Gently remove the ribbon cable with tweezers.
- ⚠ The ribbon cable is sensitive and needs to be removed carefully to insure its integrity.
- Remove the back camera using tweezers.

To reassemble your device, follow these instructions in reverse order.