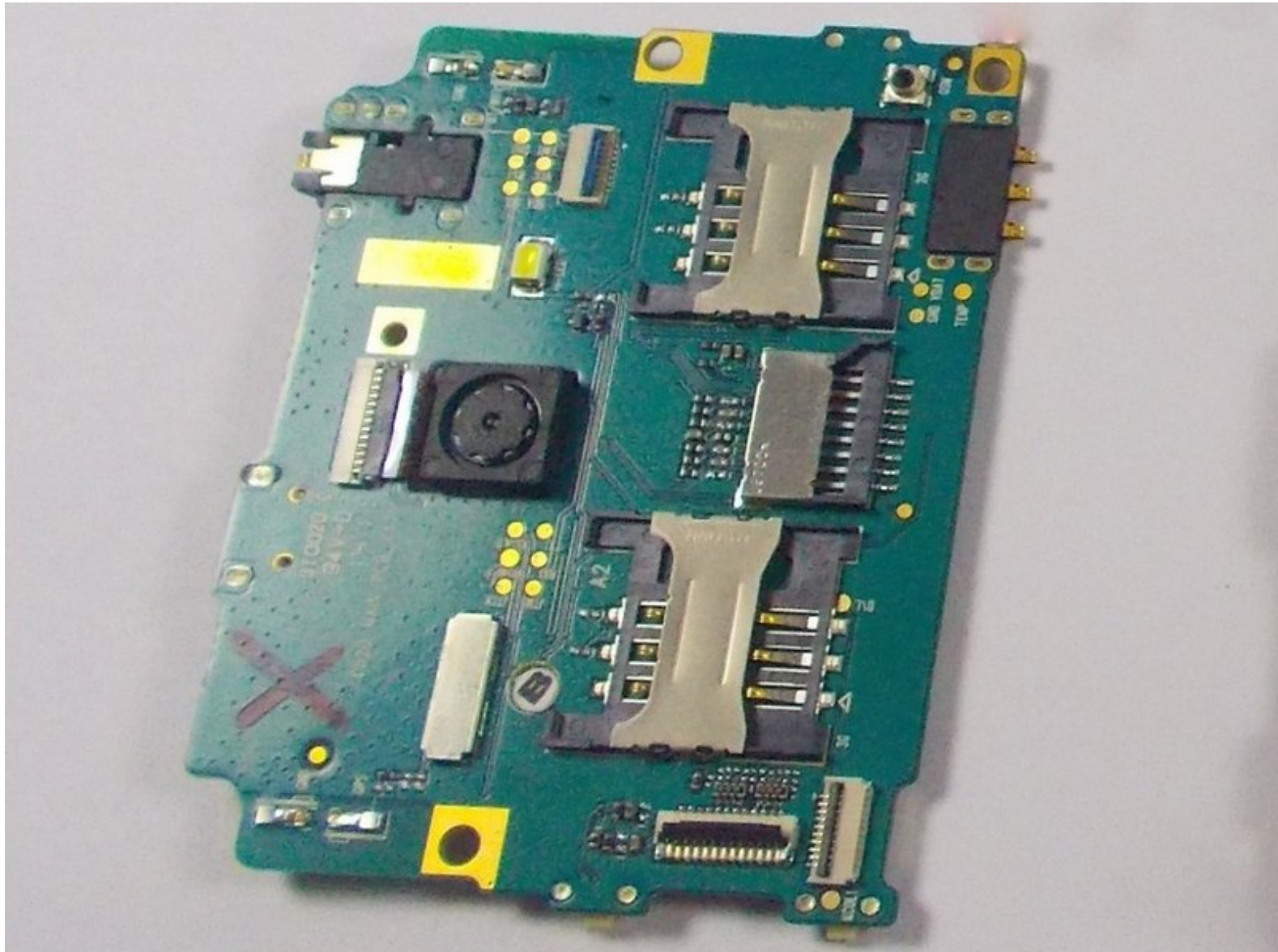




Blu Dash 5.0 Dual SIM Motherboard Replacement

Blu Dash 5.0 Dual SIM Motherboard Replacement

Written By: Dashaya Toney



INTRODUCTION

Blu Dash 5.0 Dual SIM Motherboard Replacement.



TOOLS:

- [Spudger](#) (1)
- [iFixit Opening Tools](#) (1)
- [Tweezers](#) (1)
- [Phillips #0 Screwdriver](#) (1)



PARTS:

- [Blu Dash 5.0 Motherboard](#) (1)

Step 1 — Battery



- Find the small slot on the bottom left corner of the back panel.
- Slide the spudger into the small slot and lightly twist it. This will cause the corner of the back panel to pop up.
- When the back panel is loose enough, use your fingers to remove it completely.

Step 2



- With the back panel off, you should see a large white rectangle. This is the battery. Slide the spudger under the indent on the bottom right of the battery and pull it up.

Step 3 — Display Cable

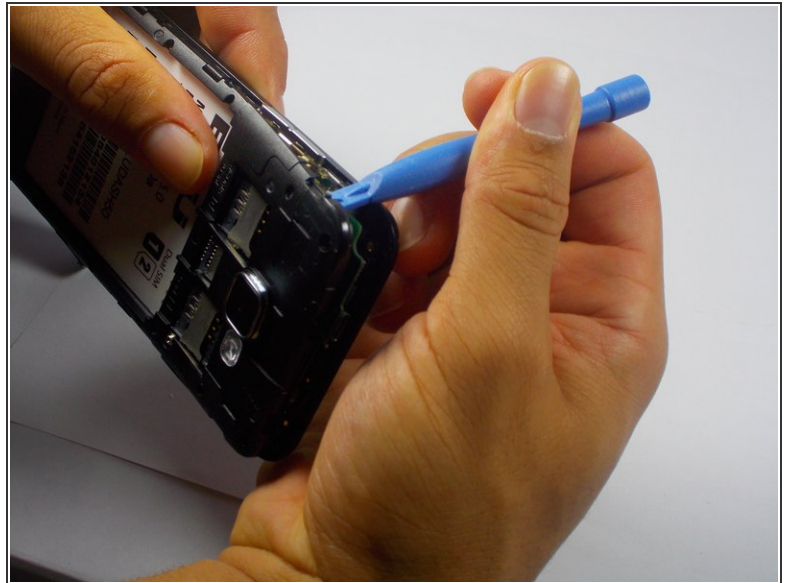


- Using the PH00 Phillips head screwdriver unscrew the screws holding the panel down, making sure

to keep track of the position of the screws.

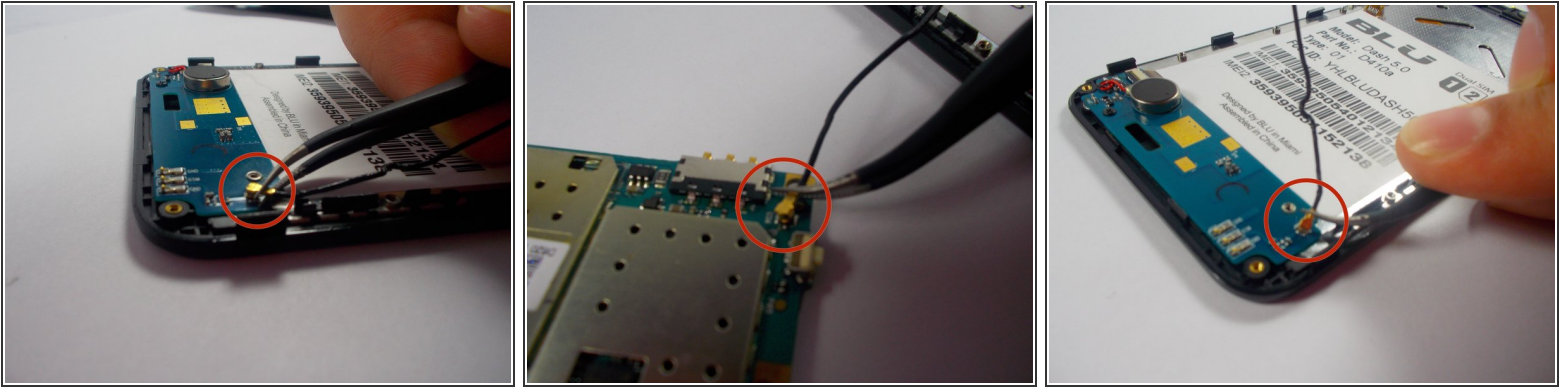
- The screw holes with the red circle around them hold screws with a 3.5 mm length.
- The screw holes with the orange circle around them hold screws with a 2.5 mm length.

Step 4



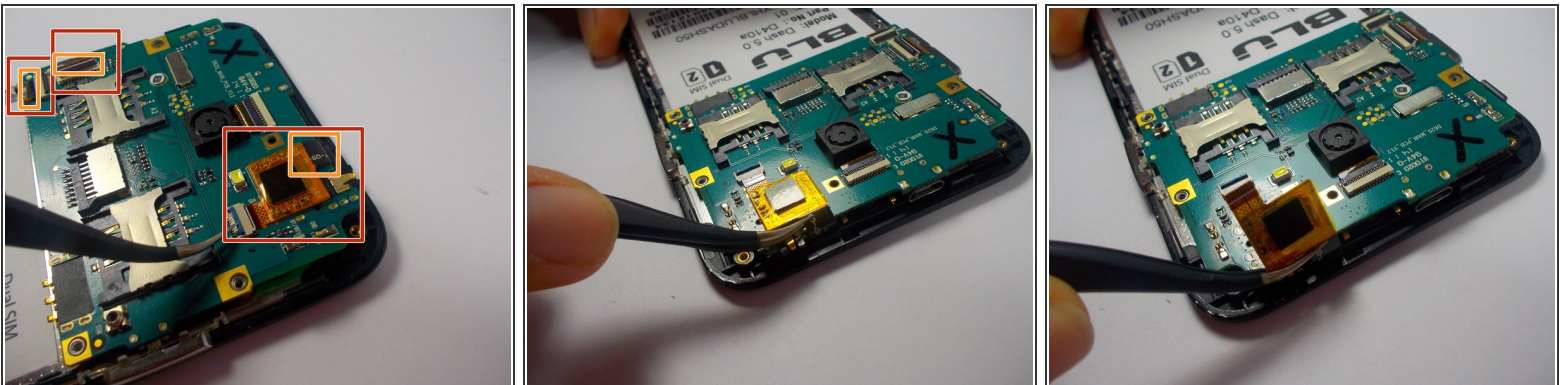
- Insert the plastic opening tool into a corner of the plastic panel and gently pry it away from the rest of the phone.
- Do this for each corner until the panel pops up.

Step 5



- Along the right side of the phone you will see a long black wire with 2 gold end pieces on the end. This is the display cable.
- To disconnect the gold end pieces from the motherboard, take the tweezers and gently but firmly pull upwards. Do this for both ends and the wire will disconnect.

Step 6 — Motherboard



- Using the tweezers, lift the tabs where the cables are connected, this unlocks the cables. The cables will slide out of sockets easily when they are unlocked. Pull from wire using tweezers as pictured.
 - The red rectangles represent where the cable's are located.
 - The orange rectangles are where the cables pug into the ports. This is where you want to apply the tweezers.
- i** There are two black tabs and one blue tab.

To reassemble your device, follow these instructions in reverse order.