



# Blu Dash 5.0 Dual SIM Speaker Replacement

Use this guide to replace the speaker of the BLU Dash 5.0

Written By: Mukish Kumar Munyady



# INTRODUCTION

Be prepared with the tools that are listed and be cautious while going through the steps as some of the components maybe fragile.



## TOOLS:

- [Tweezers](#) (1)
- [iFixit Opening Tools](#) (1)
- [JIS Driver Set](#) (1)

J000

---

## Step 1 — Speaker



⚠ Make sure device is disconnected and turned off.

- Locate the groove at the bottom left corner of the phone.
- Insert the plastic opening tool in the groove and pry it open.
- Lift the back cover of the phone using your hands.

## Step 2



- Pry the battery out from the back of the phone using the plastic opening tool.

## Step 3



- Remove the 12 screws located at the back panel of the phone using a J000 screwdriver.
- The red circles are screw holes that hold the 3.5mm length Phillips screw.
- The orange circles are screw holes that hold the 2.5mm length Phillips screw.



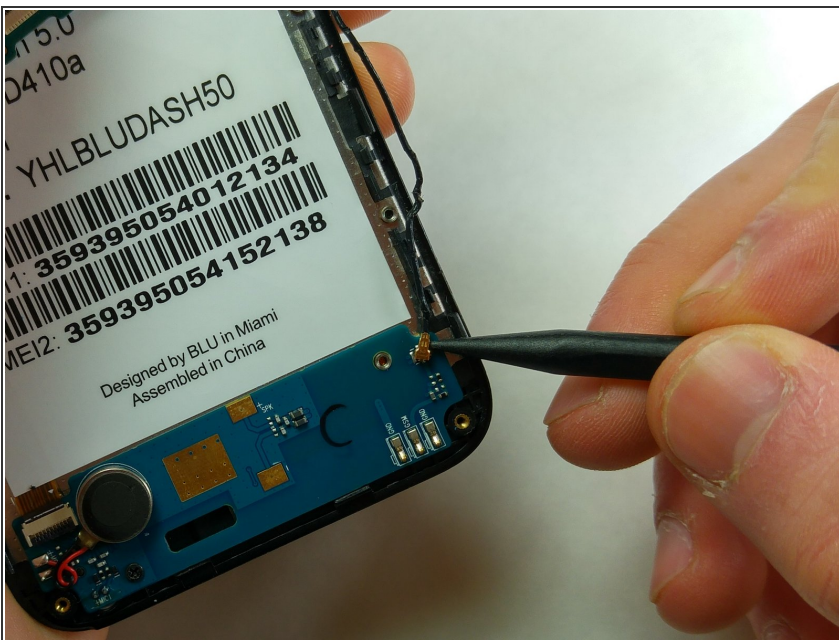
## Step 4



- Remove the back panel of the phone with your hand.

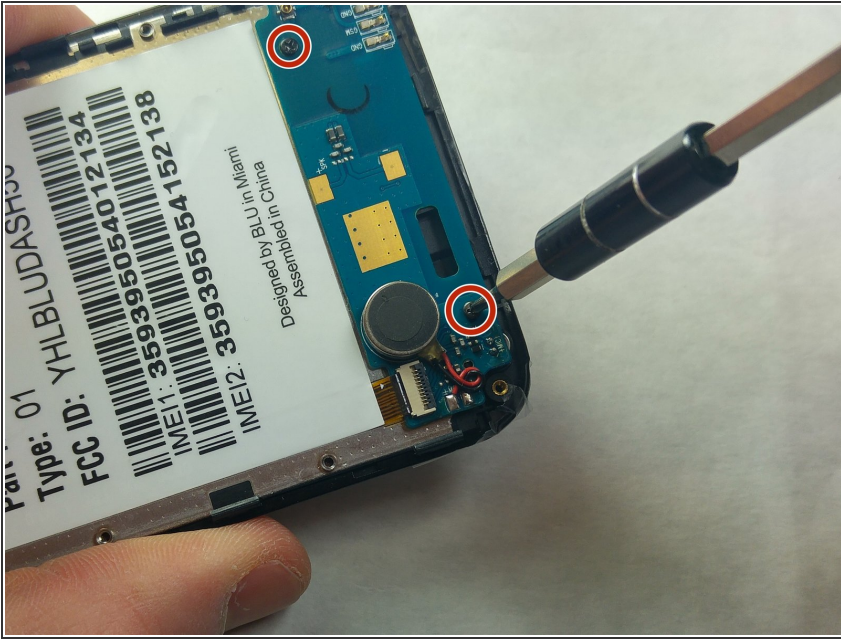
⚠ Carefully remove the plastic back panel to avoid breaking it.

## Step 5



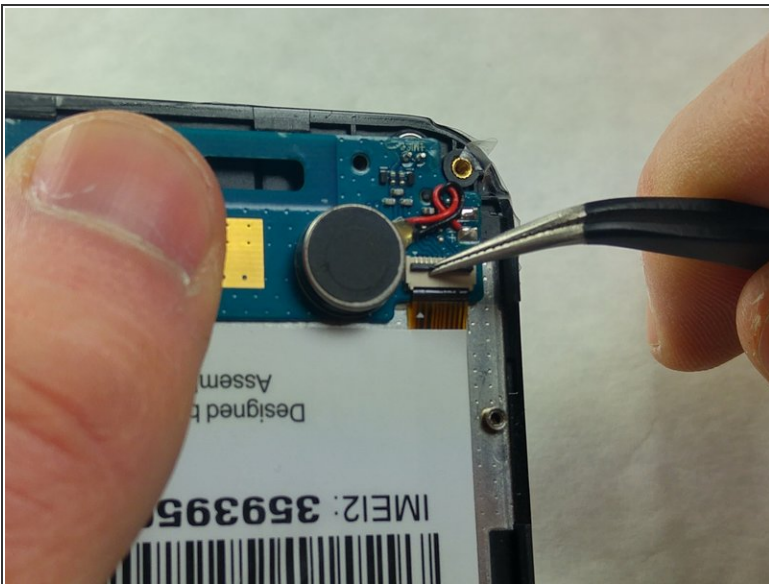
- Remove the antenna cable connectors using a spudger.

## Step 6



- Unscrew the 2.5mm screws from the circuit board holding the speaker at the bottom of the phone.

## Step 7



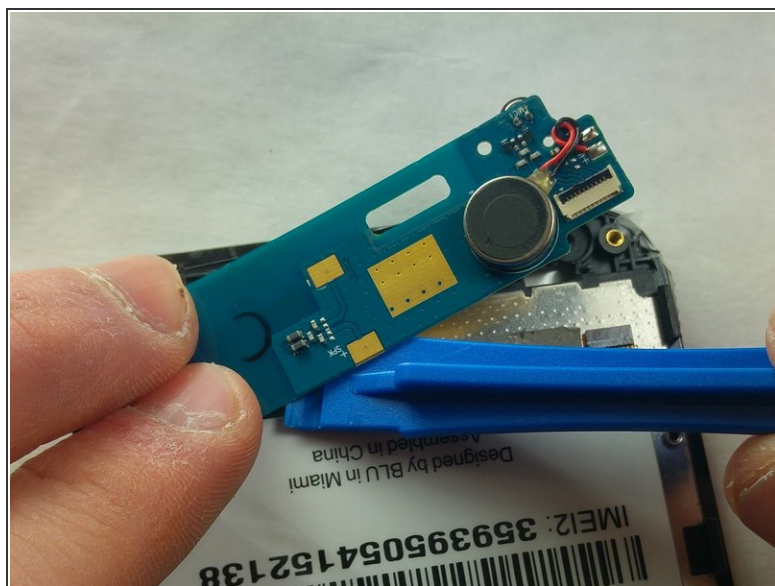
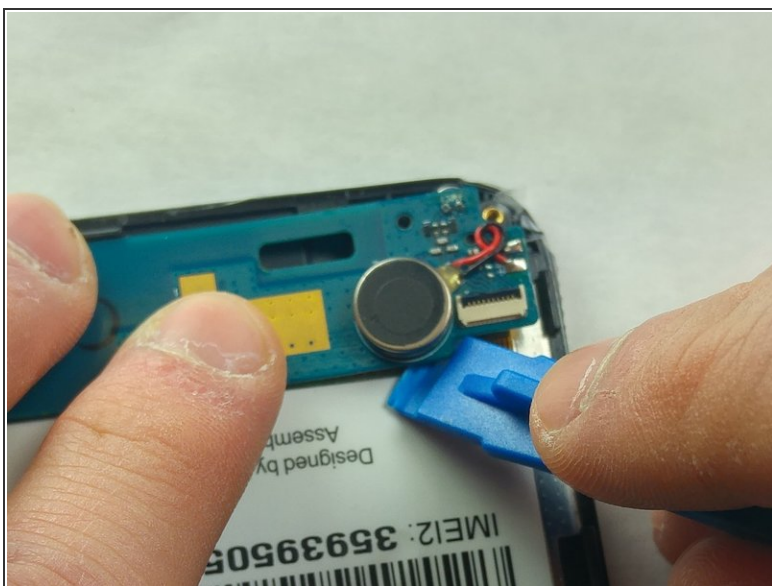
- Flip the ZIF flap up with tweezers.
- Remove the ribbon cable with tweezers.



The ribbon cable is sensitive and needs to be removed carefully to insure its integrity.



## Step 8



- Remove the speaker panel with the plastic opening tool.
- ⓘ The panel is glued onto the device and will require extra force to remove.

To reassemble your device, follow these instructions in reverse order.