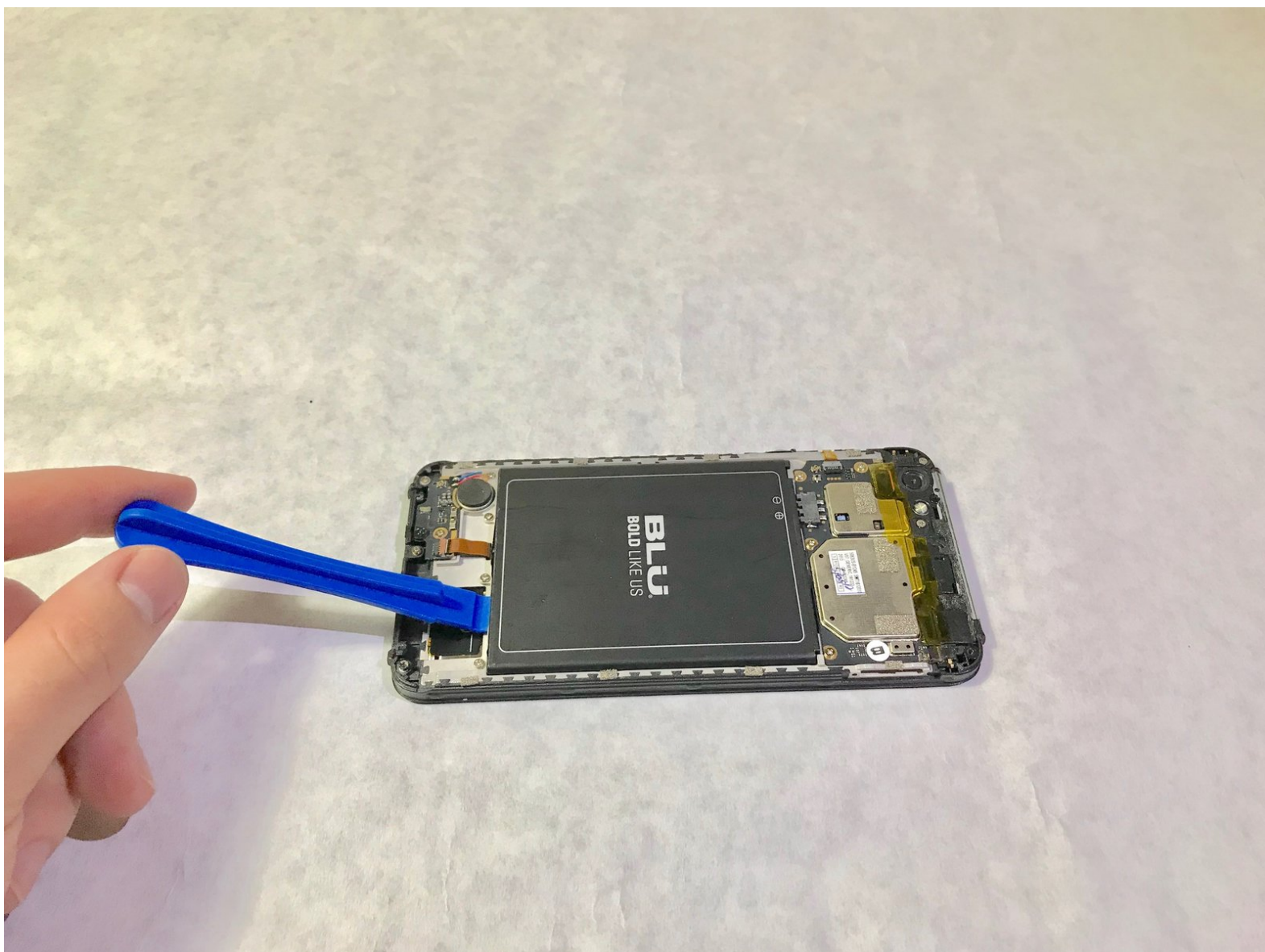




# Blu Grand M Battery Replacement

Replacing the battery of the Blue Grand M.

Written By: Cameron Retzlaff



# INTRODUCTION

Warning: If the battery is swollen or bulging it is dangerous to remove and is at risk of a chemical fire. Puncturing the battery will cause a chemical fire. Chemical fires cannot be put out by conventional methods ie water.



## TOOLS:

- [iFixit Opening Tools](#) (1)
  - [Phillips #000 Screwdriver](#) (1)
-

## Step 1 — Battery



- Remove the two plastic plates with a plastic opening tool.

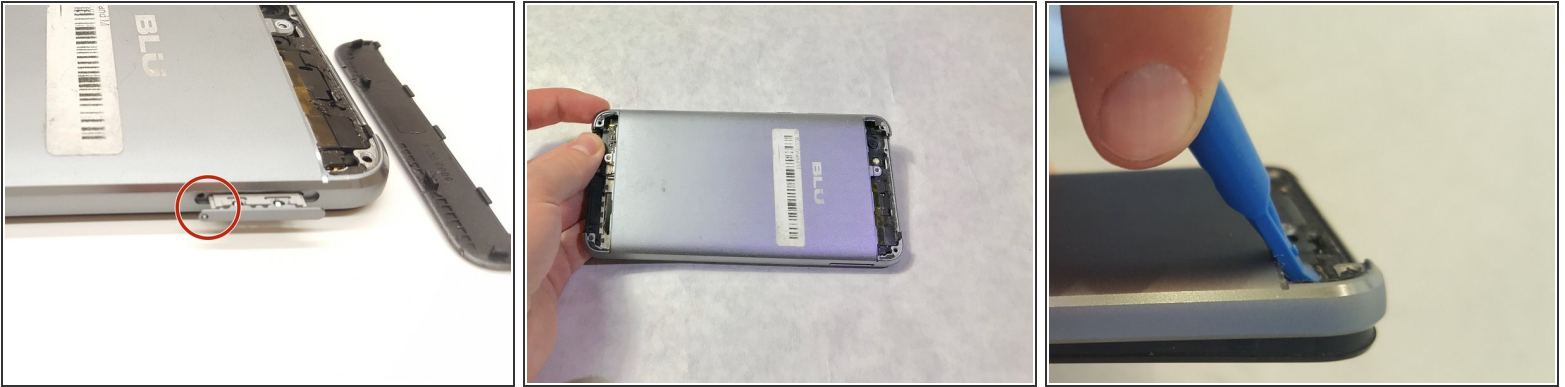
## Step 2



- Using a Phillips #000 screwdriver, remove the 3mm screws. Be sure to do this for the top and bottom of the phone.

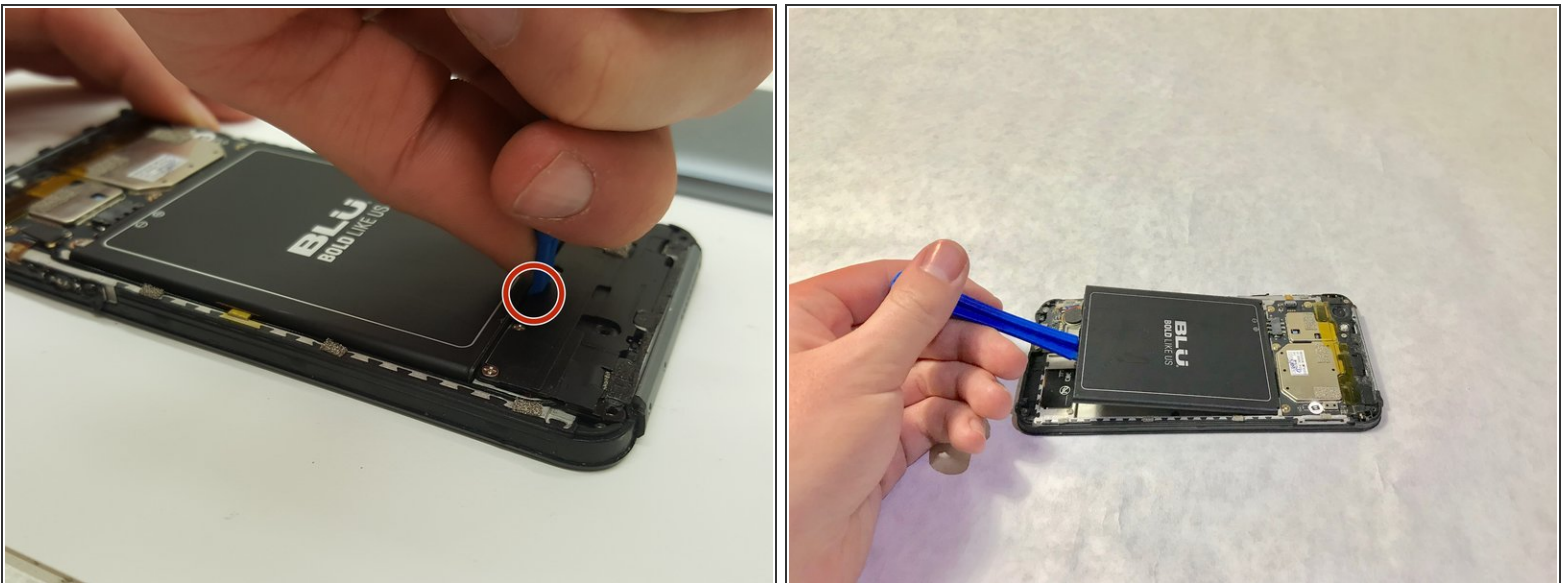


## Step 3



- Remove SIM card tray with paperclip or SIM card tray removal tool.
- Push down on the phone beside the camera and up on the backplate with your thumbs to remove the back plate. Remove adhesive if necessary.

## Step 4



- i** There is a patch of adhesive underneath the battery, which can make it difficult to remove.
- Place the plastic opening tool in the highlighted indent, and push up on the battery to remove it.

To reassemble your device, follow these instructions in reverse order.