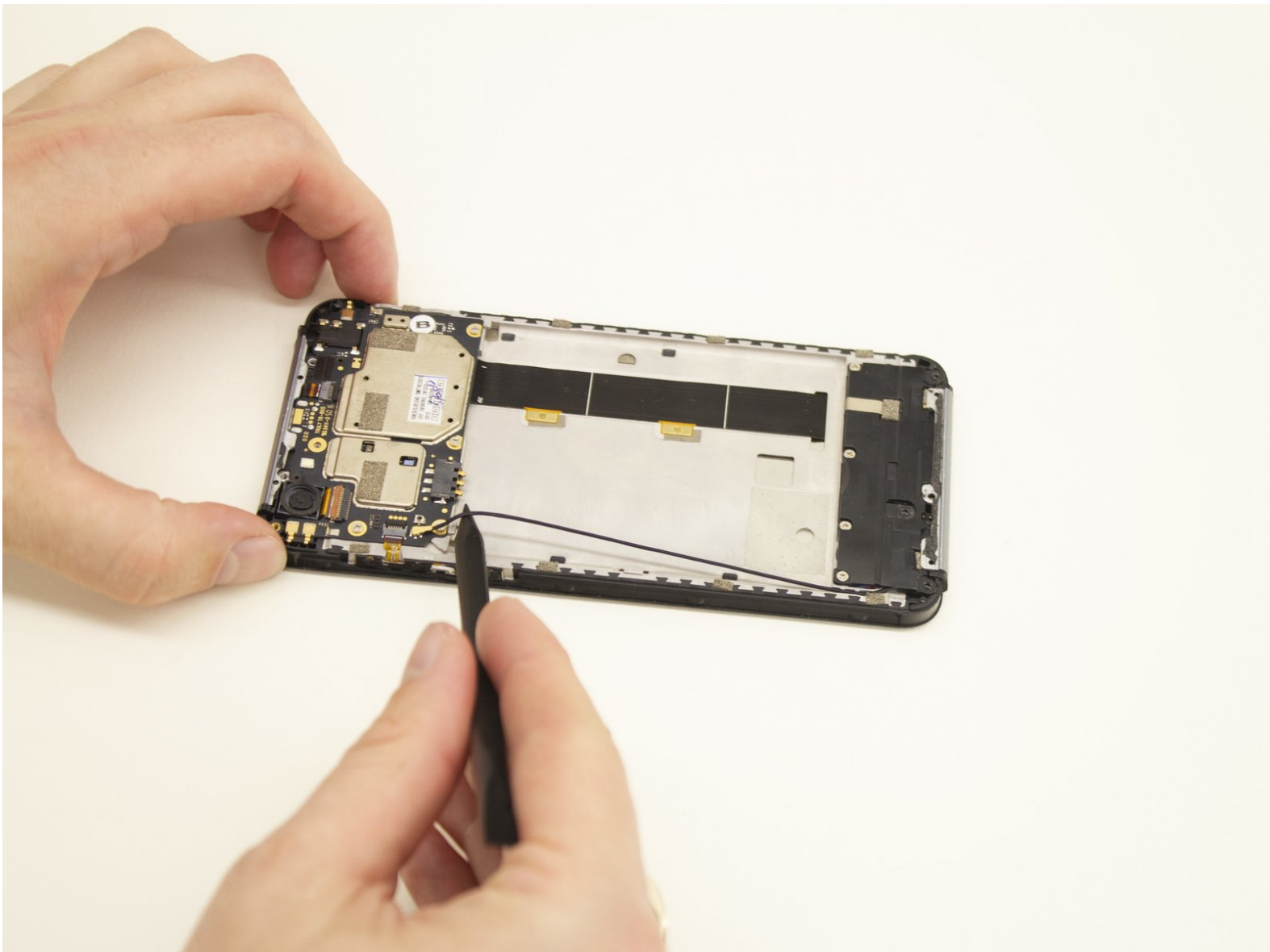




# Blu Grand M Motherboard Replacement

Replacement of the motherboard on a BLU Grand M.

Written By: Liam Rollins



## INTRODUCTION

Follow this guide to replace the motherboard on your BLU Grand M. If your phone has been submerged in water and fails to turn on, the motherboard may be damaged and will need to be replaced. If your phone fails to charge, even after replacing the battery, replacing the motherboard may also help. Be sure to power off your phone prior to beginning the project.



### TOOLS:

- [Tweezers](#) (1)
  - [Nylon Tipped Tweezers](#) (1)
  - [iFixit Opening Tools](#) (1)
  - [Phillips #000 Screwdriver](#) (1)
  - [Spudger](#) (1)
-

## Step 1 — Battery



- Remove the two plastic plates with a plastic opening tool.

## Step 2



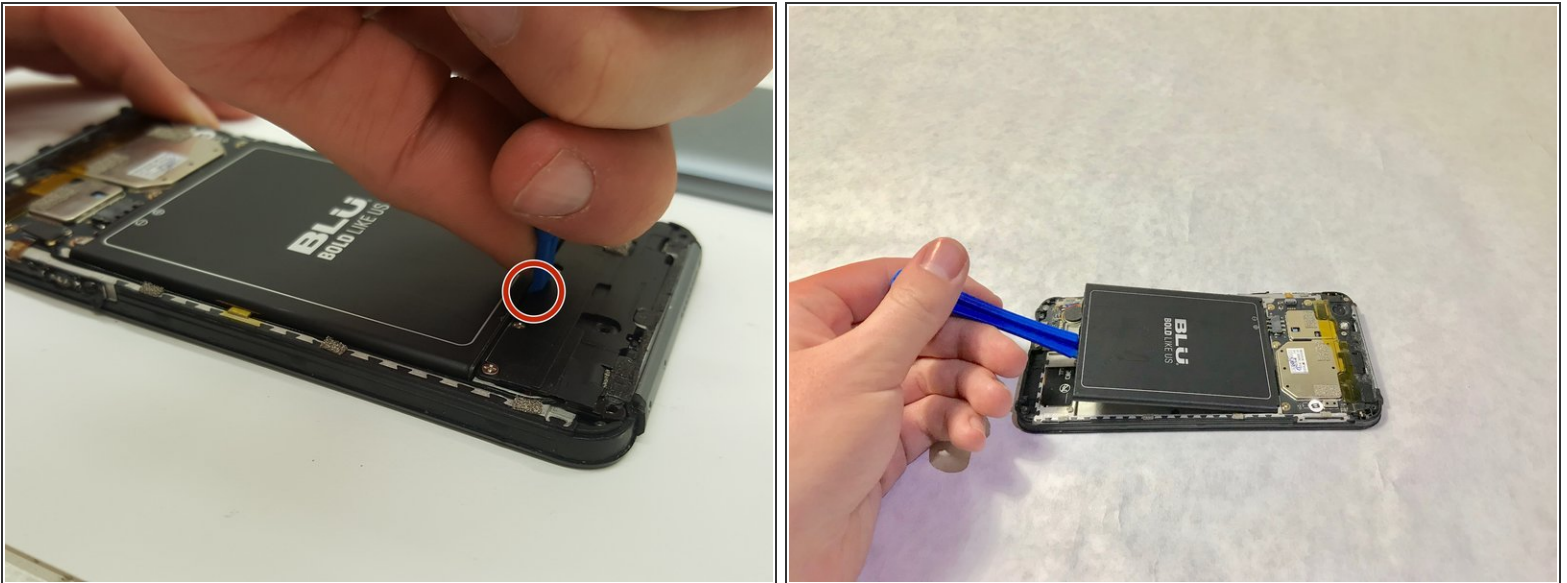
- Using a Phillips #000 screwdriver, remove the 3mm screws. Be sure to do this for the top and bottom of the phone.

### Step 3



- Remove SIM card tray with paperclip or SIM card tray removal tool.
- Push down on the phone beside the camera and up on the backplate with your thumbs to remove the back plate. Remove adhesive if necessary.

### Step 4



- ⓘ There is a patch of adhesive underneath the battery, which can make it difficult to remove.
- Place the plastic opening tool in the highlighted indent, and push up on the battery to remove it.

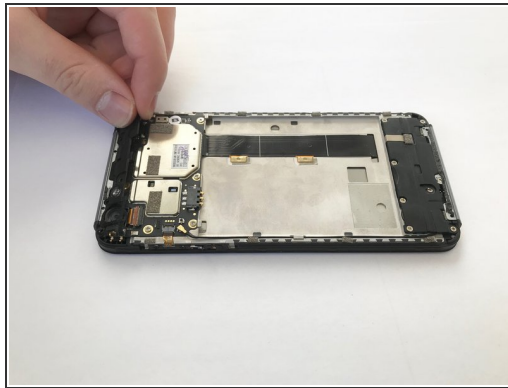
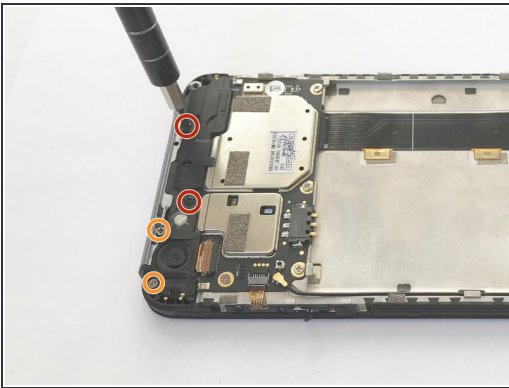


## Step 5 — Plastic Plate



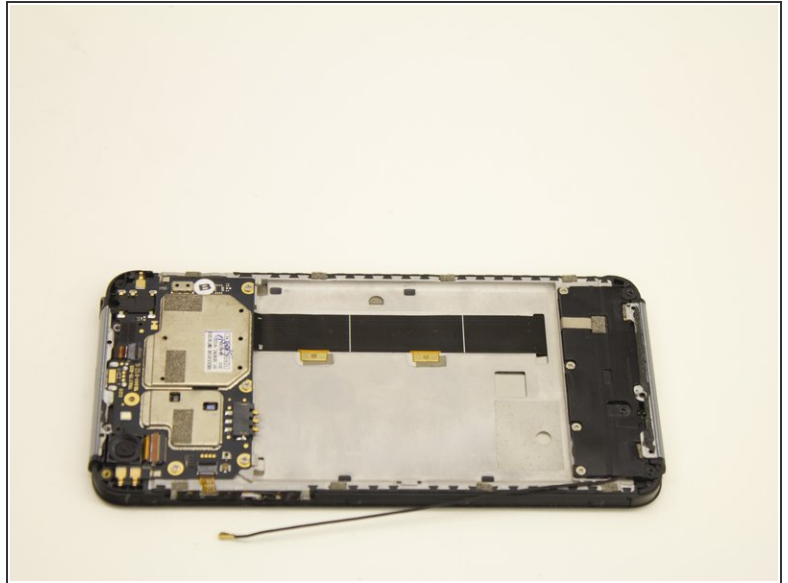
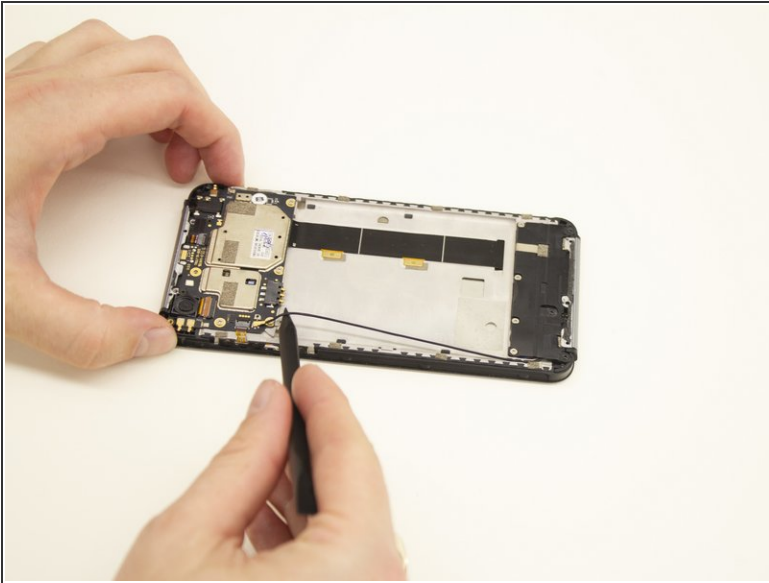
- Remove the yellow plastic tape using a pair of tweezers.

## Step 6



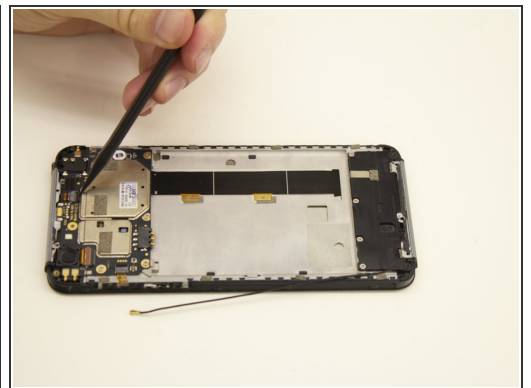
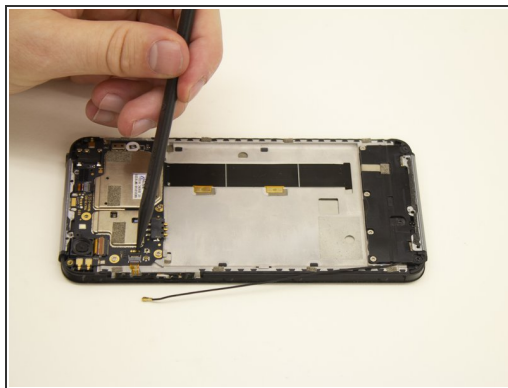
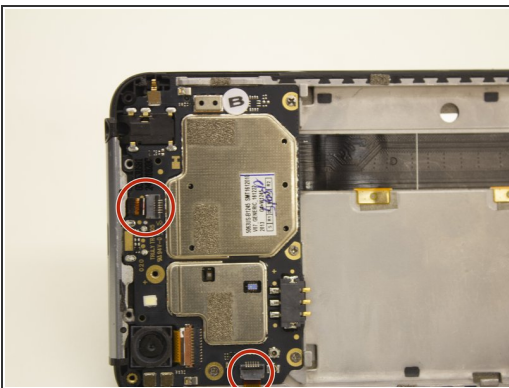
- Use a Phillips #000 screwdriver to remove two black 4.0mm screws.
- Use a Phillips #000 screwdriver to remove 2 silver 4.0mm screws
- Remove the plastic cover along the top by tugging on it on the corner as shown.

## Step 7 — Motherboard



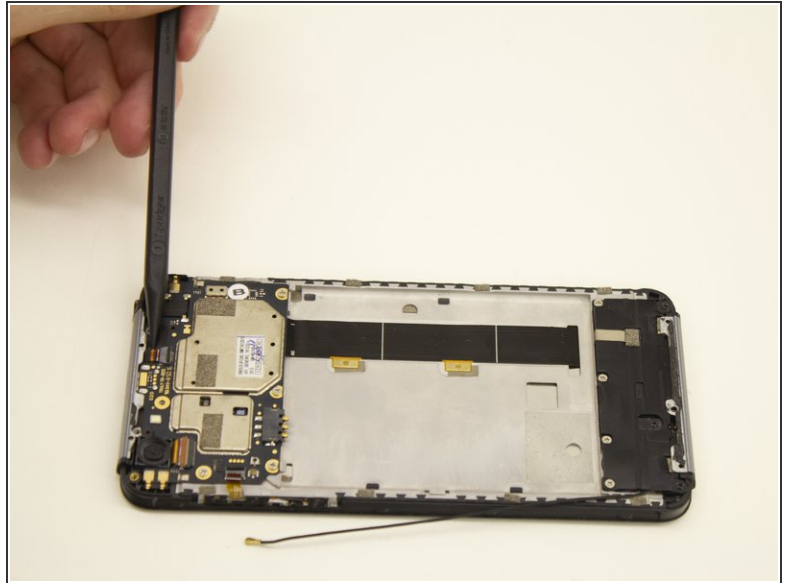
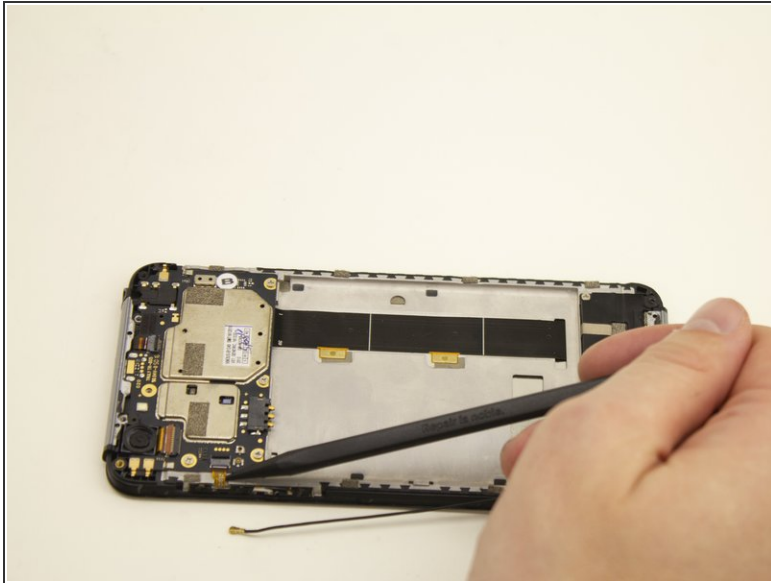
- Place a spudger or other tool underneath the black wire.
- Lift up on the gold coaxial cable connector so it disconnects from the motherboard.

## Step 8



- Using the the narrow tip of a nylon spudger, open the two cable connector ports.

## Step 9

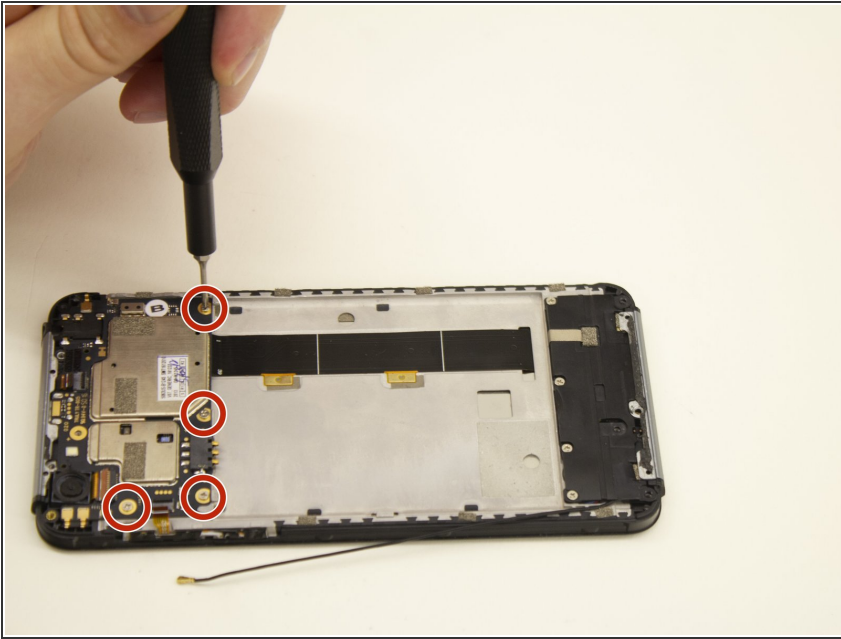


- Insert the spudger underneath the ribbon cable.
- Pull the ribbon cable away from the gray connector.

⚠ The cable should pull away free from the gray connector without any resistance.

🔧 If you encounter resistance, check to see that the black cable connector port is open.

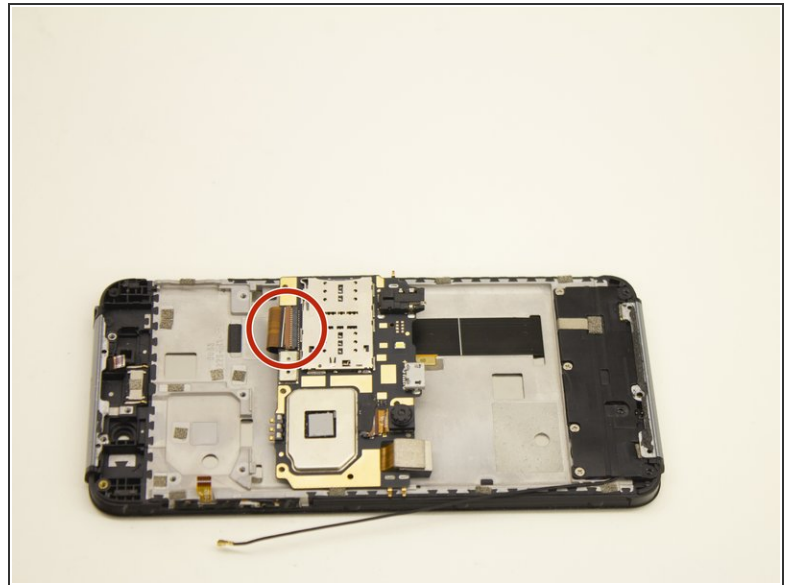
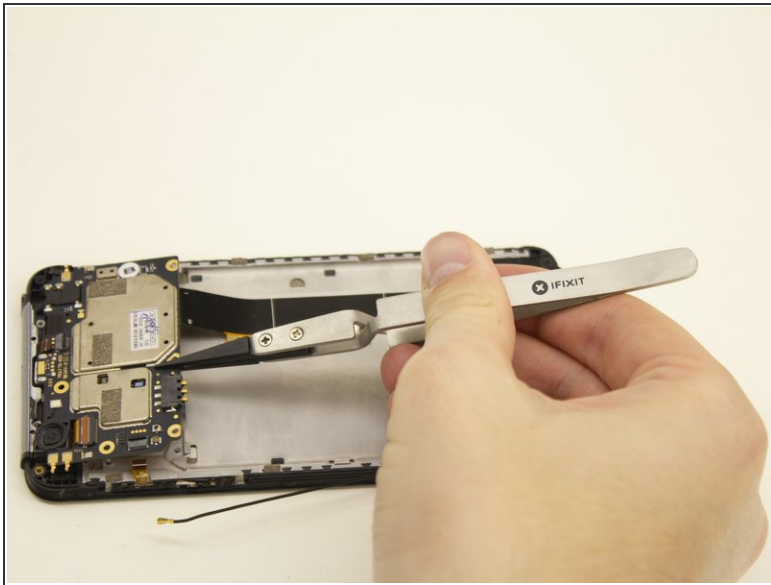
## Step 10



- Remove the four 4.0mm screws with a Philips #000 screwdriver.

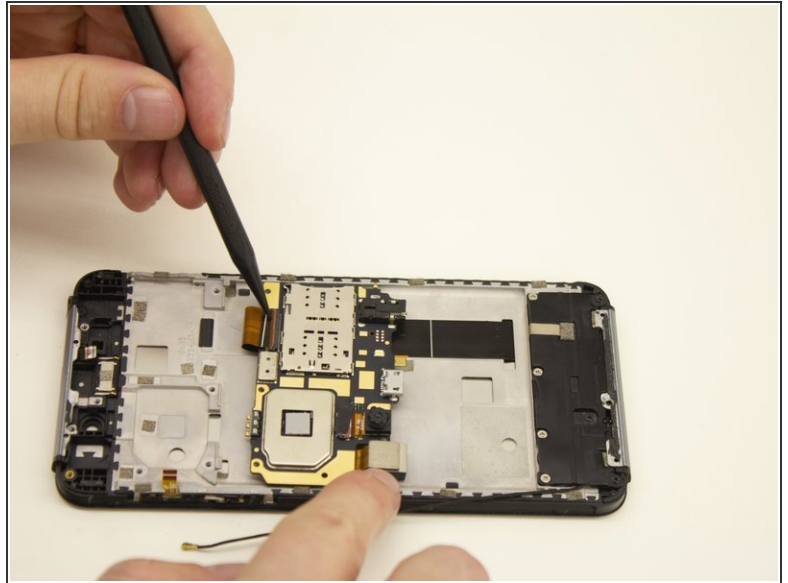
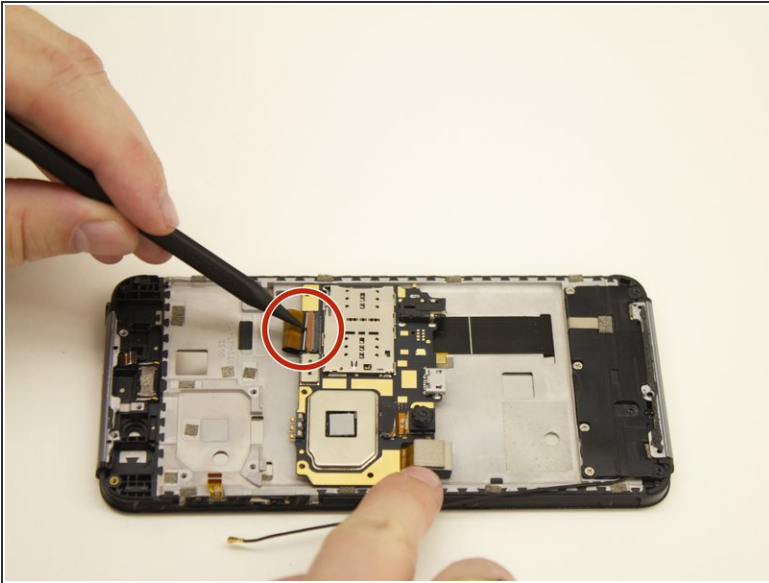


## Step 11



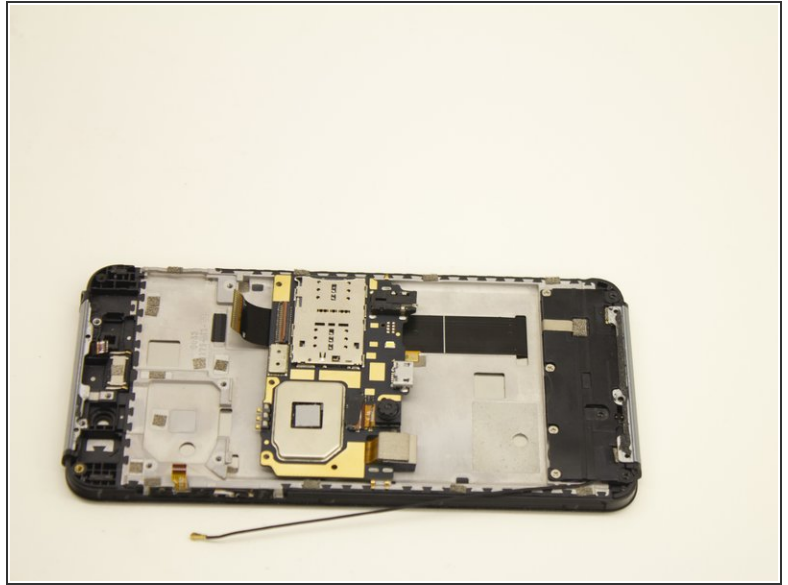
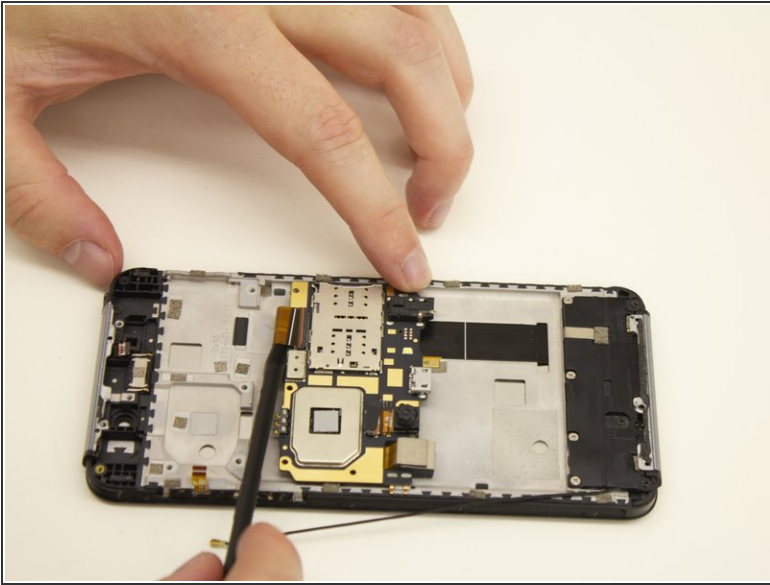
- Lift the motherboard up and slightly away from the smartphone frame using the nylon tipped tweezers or other ESD safe tool.
- ⚠ The motherboard is still connected to the frame via a large black ribbon cable. Do not lift higher than this ribbon allows.
- Flip the motherboard upside down to reveal the ribbon cable connector.

## Step 12



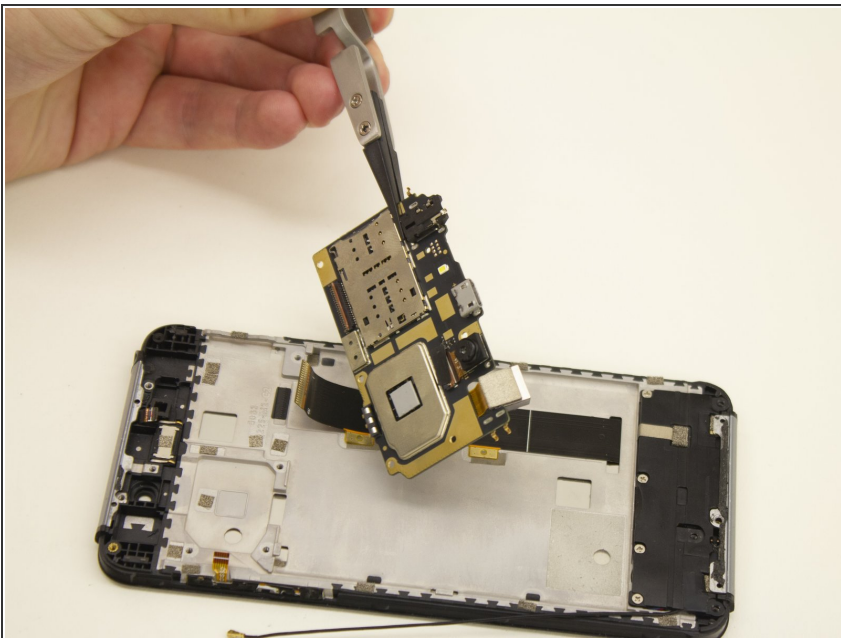
- i A large black ribbon cable is connected to the underside of the motherboard.
- Use the spudger to open the orange plastic ribbon connector.

## Step 13



- Insert the spudger into the folded ribbon cable loop.
  - Pull the ribbon cable away from the black plastic connector.
- ⚠ The ribbon cable should pull away from the black connector without any resistance.

## Step 14



- Remove the motherboard with the nylon tweezers.
- Place the motherboard on an electrostatic discharge (ESD) safe material.

To reassemble your, follow these instructions in reverse order.

Note: The ribbon clamp connector, also known as a Zero Insertion Force (ZIF) connector, might be difficult to reinsert. Follow the reinstallation step at the end of this guide: [Recognizing & Disconnecting Cable Connectors](#).