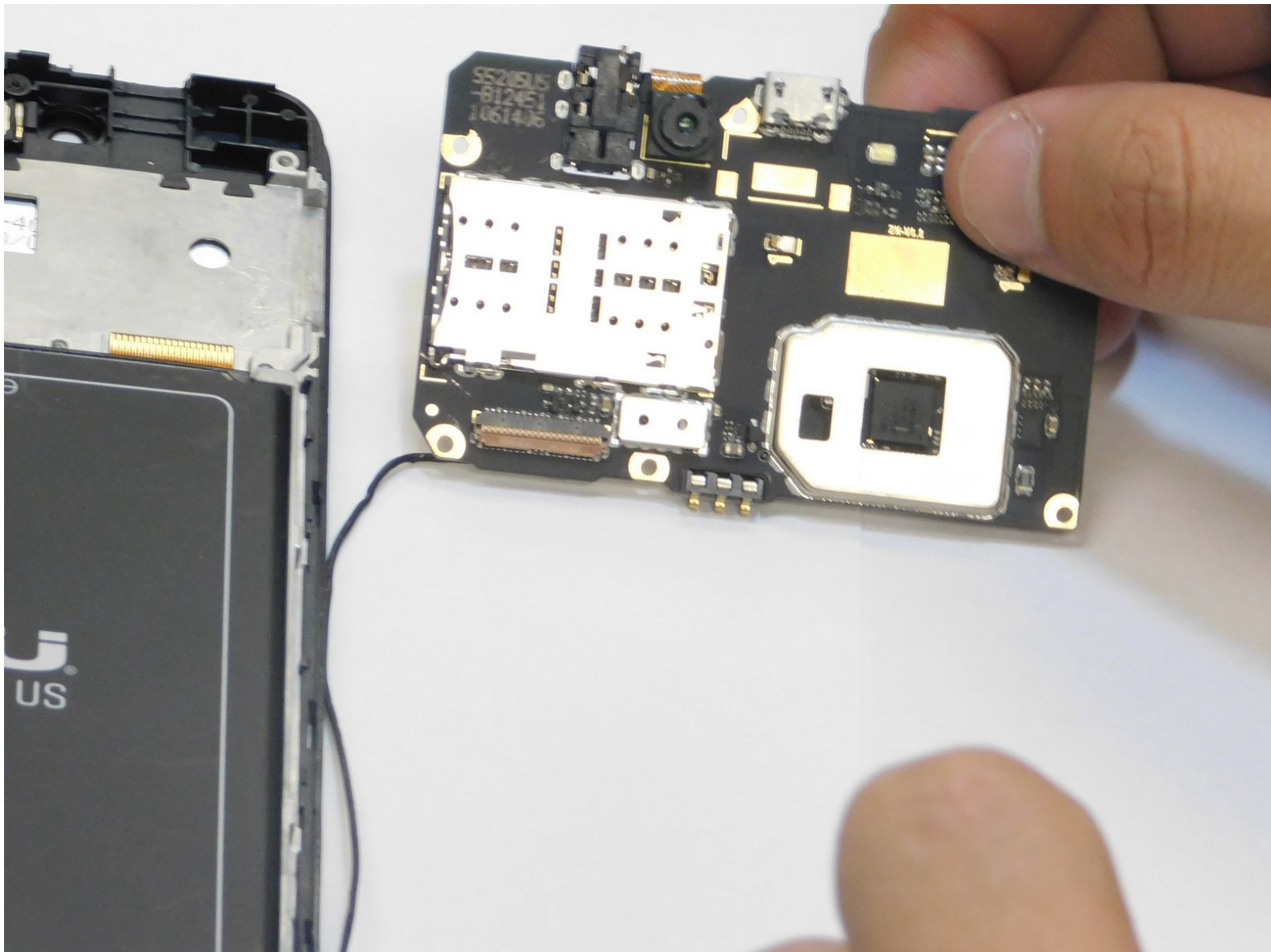




# Blu Grand M2 Charging Port Assembly Replacement

Written By: Richard Hills



## INTRODUCTION

This guide was made to help you fix your problem if you are experiencing a BLU GRAND M2 Charging failure this will help replace the charging port assembly on your own. You will be removing the back panel from the phone, removing the screws, and finding the charging port.



### PARTS:

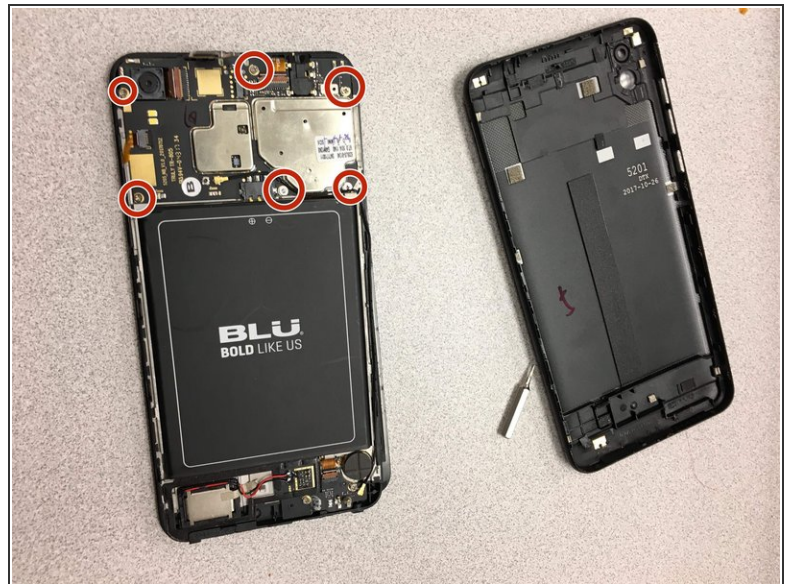
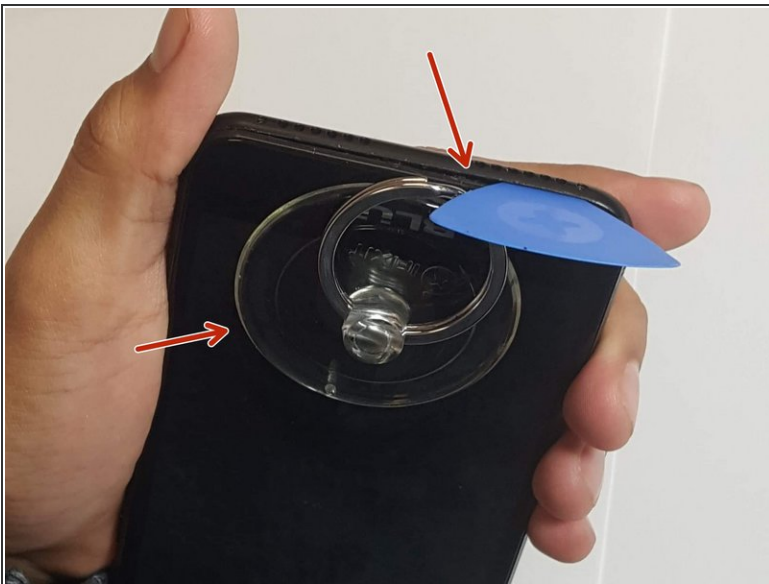
- [motherboard blu grand m2](#) (1)
-

## Step 1 — Charging Port Assembly



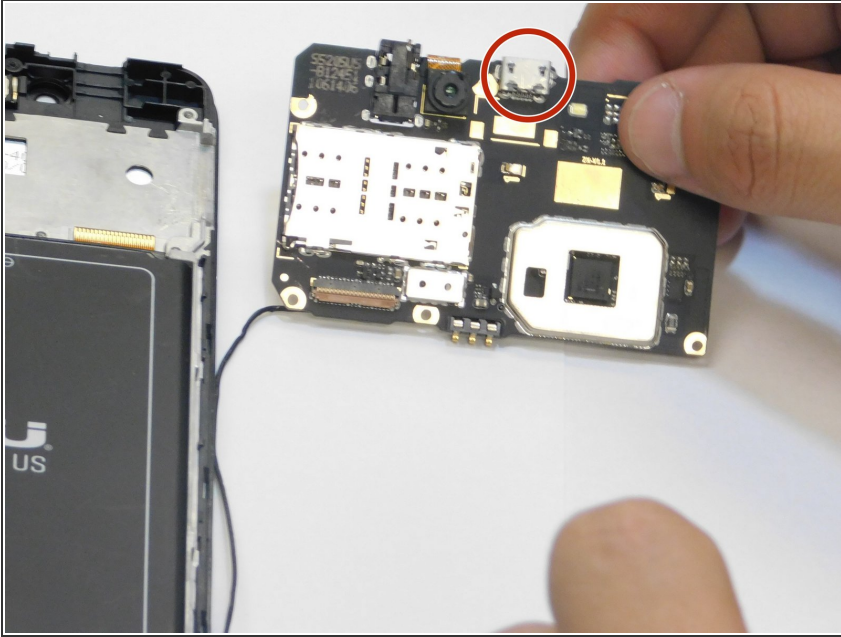
- Begin by locating the torx screws shown in **(Figure 1)**.
  - remove the screws with the torx attachment as shown in **(Figure 1)**.
- i** Place screws accordingly.

## Step 2



- Once screws have been removed begin by using a pry tool and a suction tool. ( **figure 1** ).
  - Once back panel has been removed, locate the six screws on the motherboard piece ( **figure 2** ).
- i** Make sure to disconnect other connectors from camera. ( **figure 2** ).

## Step 3



- Once all six screws are removed, begin by carefully prying the motherboard assembly.
- The charging port assembly is solder to the motherboard piece, you may need a solder to remove the port.
- Once you have removed the port, you can now replace it with the new port you have.
- After installing the new port, repeat the steps to reassemble the phone.

To reassemble your device, follow these instructions in reverse order.