



# Blu Grand M2 Display Replacement

For this guide, it will show how to replace the display on a BLU Grand M2 Mobile Phone

Written By: Christopher



# INTRODUCTION

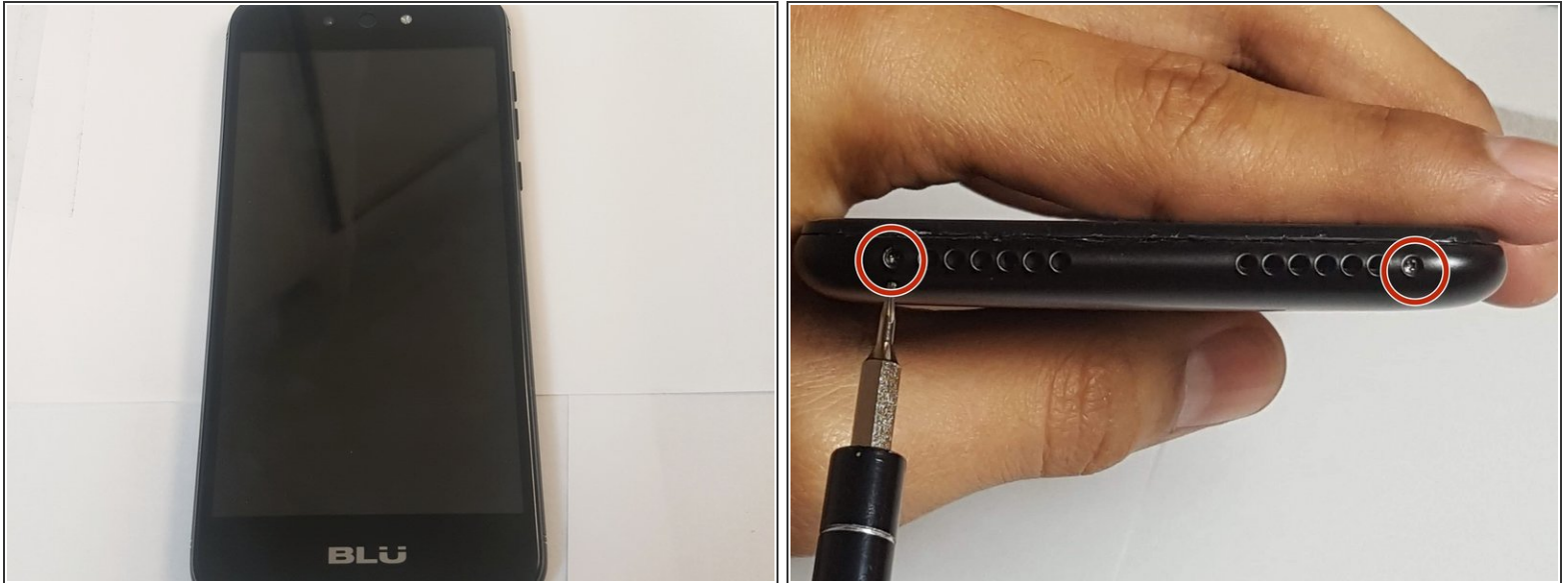
If you are in need of replacing your BLU GRAND M2 display screen, this guide will help replacing it in a matter of time and easy as six steps on your own. This guide will show you how to remove the back panel, loosen screws, removing the motherboard , and removing the screen.



## TOOLS:

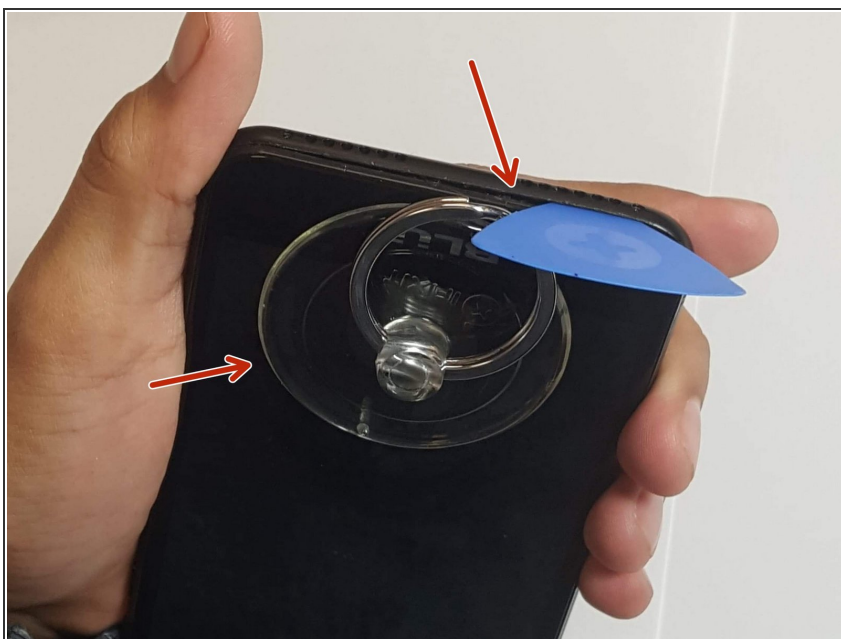
- [iFixit Opening Tools](#) (1)
  - [iFixit Adhesive Remover \(for Battery, Screen, and Glass Adhesive\)](#) (1)
-

## Step 1 — Display



- Before beginning the guide, be assure that this is the replacement guide you are about to begin. (figure 1)
- After assuring the guide, begin by locating the torx screws beneath the phone, and remove them. (figure 2)

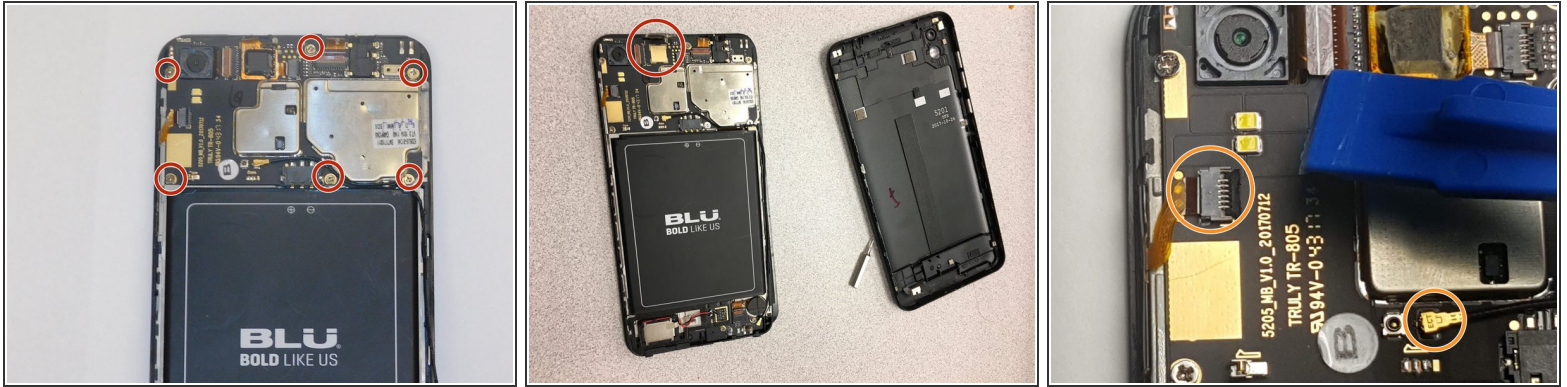
## Step 2



- Use the Suction Tool and pry tool, to begin by slowly removing the black plate.
- ⚠ *Be Cautious, do not damage phone display and or inside components while using pry tool and suction tool.*

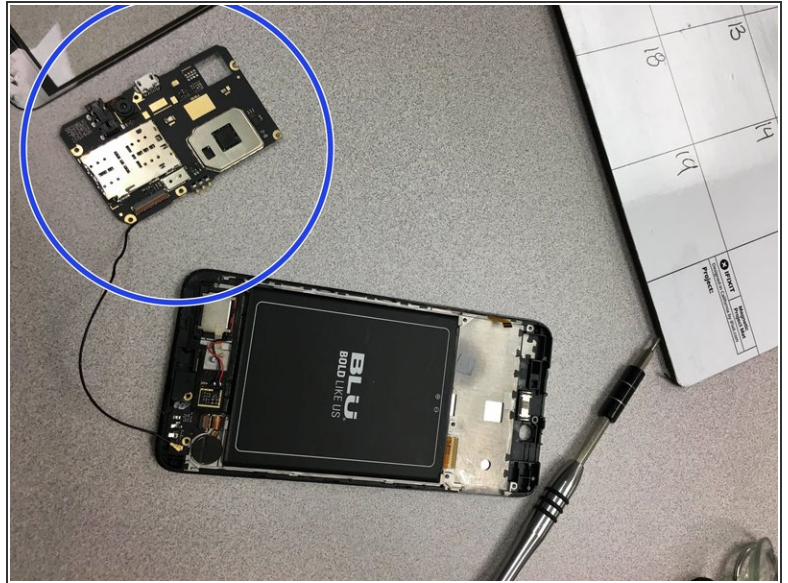
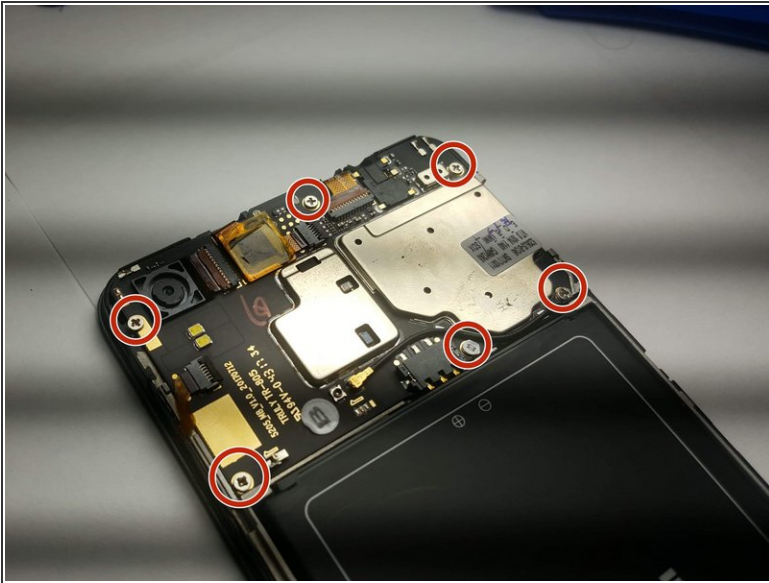


## Step 3



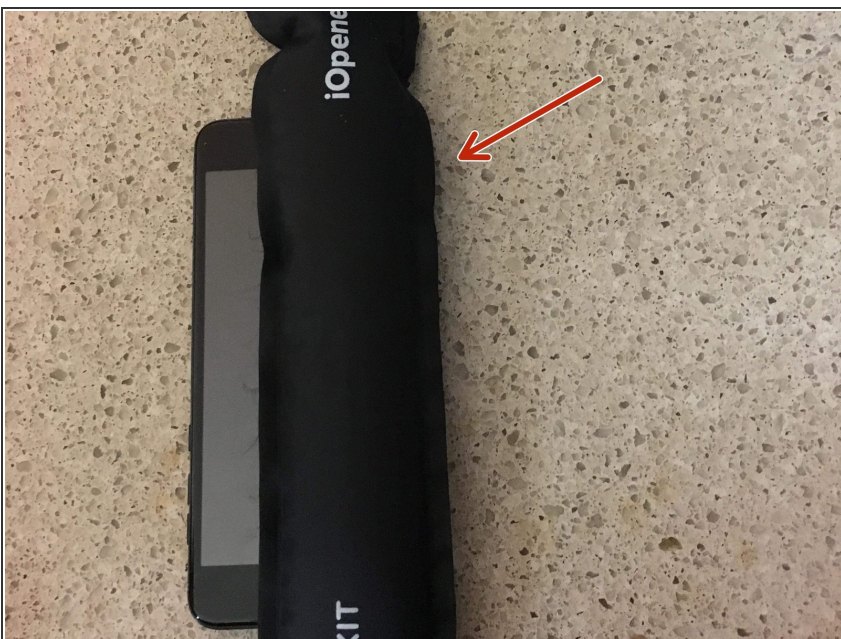
- Once the back panel is removed, locate the connector of the display shown in **figure 1** on the motherboard side.
- There will be an orange sticker above the connector. You can gently lift up to release the connector. **figure 2**
- Disconnect any remaining connectors shown on **figure 3**

## Step 4



- After removing the connectors, begin by locate the six screws on the motherboard side ( **figure 1**).
- After locating the screws, start removing screws ( **figure 1**).
- After removing screws, you can now remove the motherboard piece. ( **figure 2**)

## Step 5



- Once you have removed the motherboard piece, flip the phone, and begin using the iOpener.
  - Using the iOpener from the IFIXIT kit, heat it up for 30 seconds in a microwave, and apply it on top of the screen to loosen adhesive.
- ⚠ Using the IOpener can be hot. Make sure to wear gloves and other safety wear to resist any burns.

## Step 6



- Using the suction tool, you can now begin by slowly pulling out the display screen show in ( **figure 1**)
- Use the pry tool to completely detach the display screen from the phone. ( **figure 2** )
- Finally, the display is removed and attach your new screen.
- After applying the new screen, use the steps in reverse order to reassemble the phone.

To reassemble your device, follow these instructions in reverse order.