



Blu L120 Battery Replacement

Replace the battery in your Blu L120.

Written By: Julio

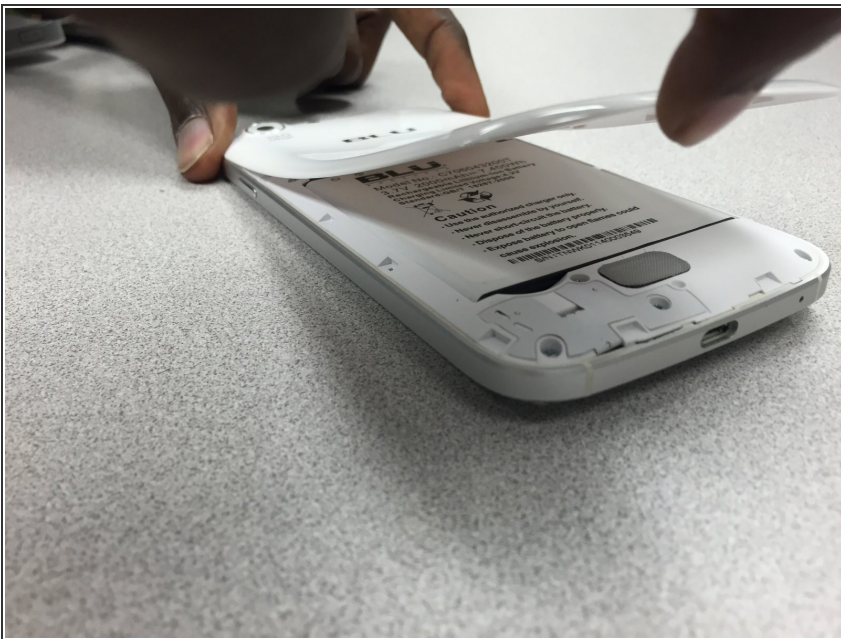


Step 1 — Open the back panel



- Remove the back cover by lifting at the notch towards the bottom of the phone. Use your fingernail to pry up.

Step 2 — Pull the the cover up.



- Use one hand to pull the cover up, and the other hand to hold the phone down.

Step 3 — Remove the Battery



- Pull the battery up from the lower left corner.

Step 4 — Battery replacement



- Now, you can put the new battery in, then replace the cover.

To reassemble your device, follow these instructions in reverse order.