



Blu L120 Loudspeaker Replacement

Loudspeaker sound muffled? No sound from speaker? Replace it!

Written By: Julio

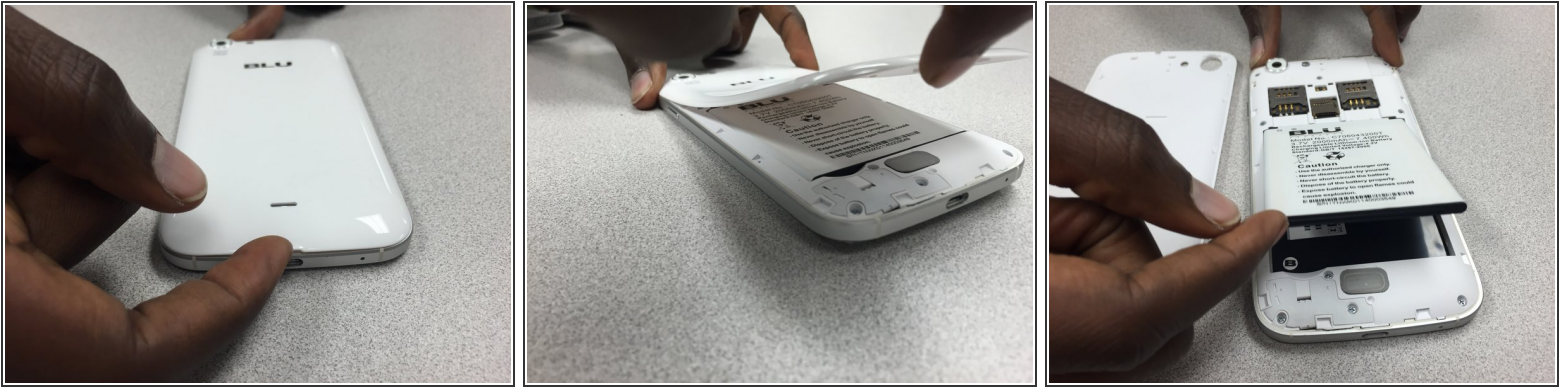




TOOLS:

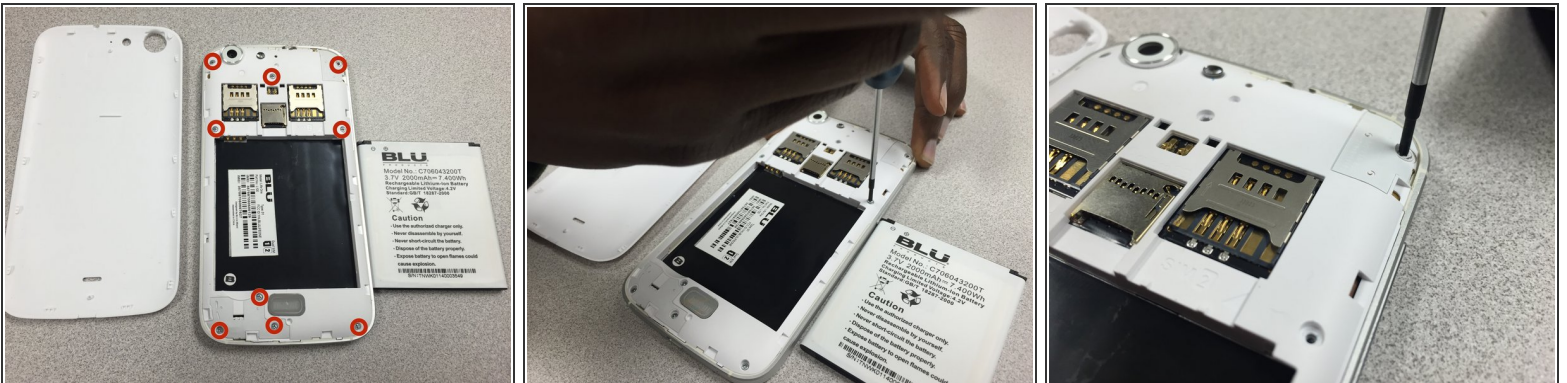
- [Tweezers](#) (1)
 - [Spudger](#) (1)
-

Step 1 — Open the back panel



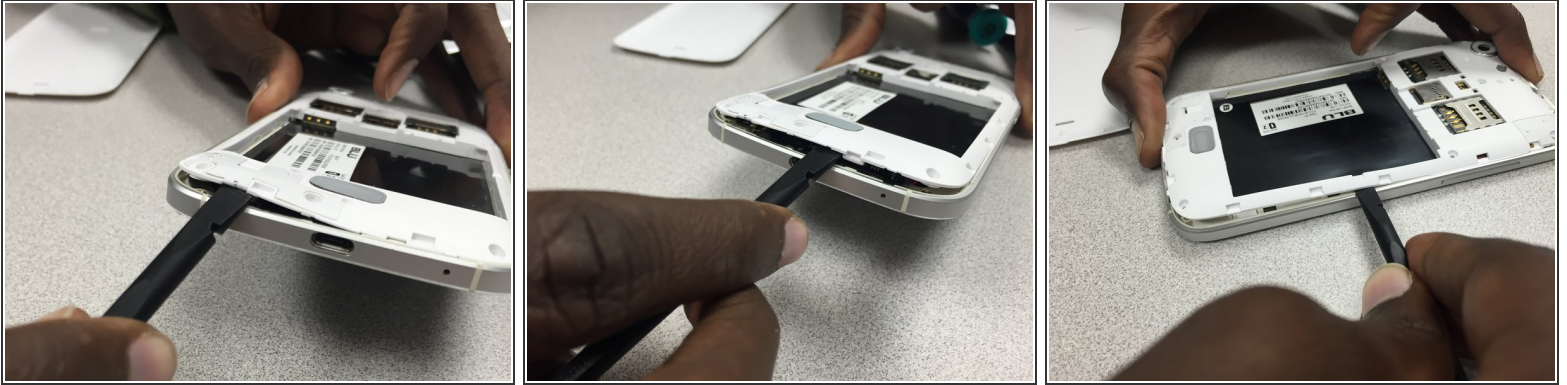
- Remove the back cover by lifting at the notch towards the bottom of the phone. Use your fingernail to pry up.

Step 2 — Screw removal



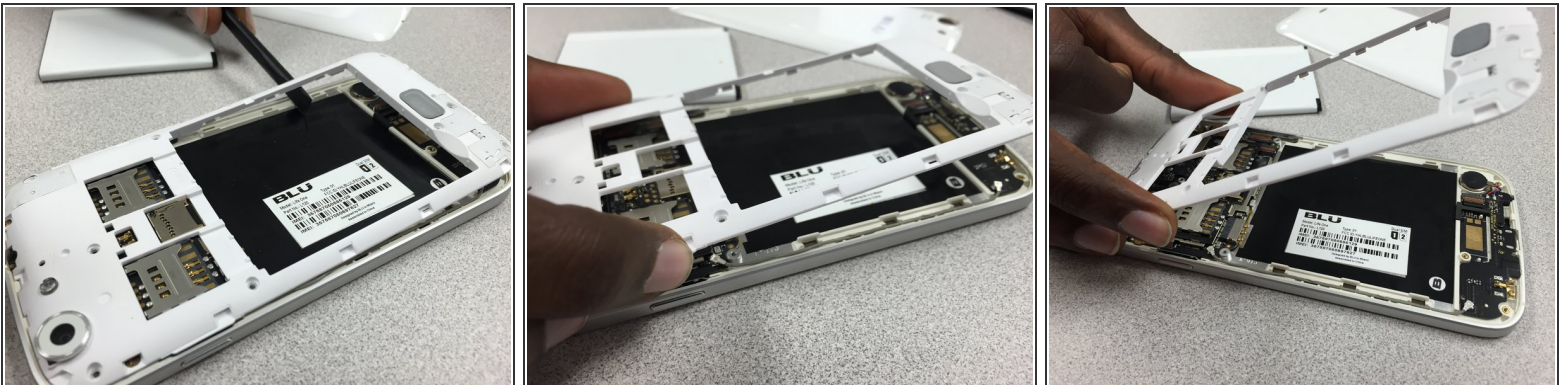
- Remove these nine screws with a small philips screwdriver. They are all of the same size
- There is a small screw hidden under the warranty sticker. You may either remove or poke through it.
- ***WARNING*** by doing this you will void your manufacturer warranty.

Step 3 — Rear panel removal



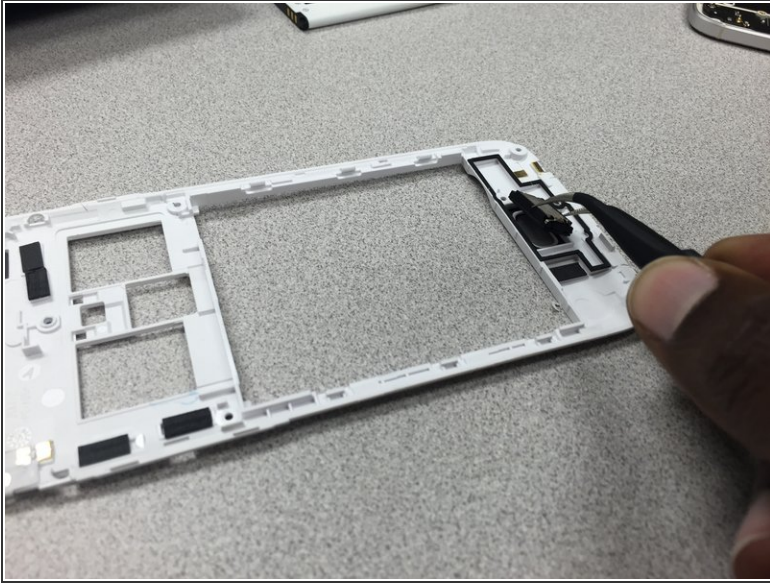
- Use the Spudger to gently separate the panel from the frame, starting from the bottom left corner.
- Then work your way along the edges of the phone.

Step 4 — Separate back panel and frame



- Continue using the spudger around the back panel of the phone to separate both pieces.
- Once you have gone around the entire frame, use both hands to pull it apart.

Step 5 — Speaker Removal



- Use a pair of tweezers to grab the speaker assembly from the back of the panel and gently remove it from the frame. (double sided tape is used to hold it together)
- Install the new speaker, and follow the guide in reverse to reassemble the phone.

To reassemble your device, follow these instructions in reverse order.