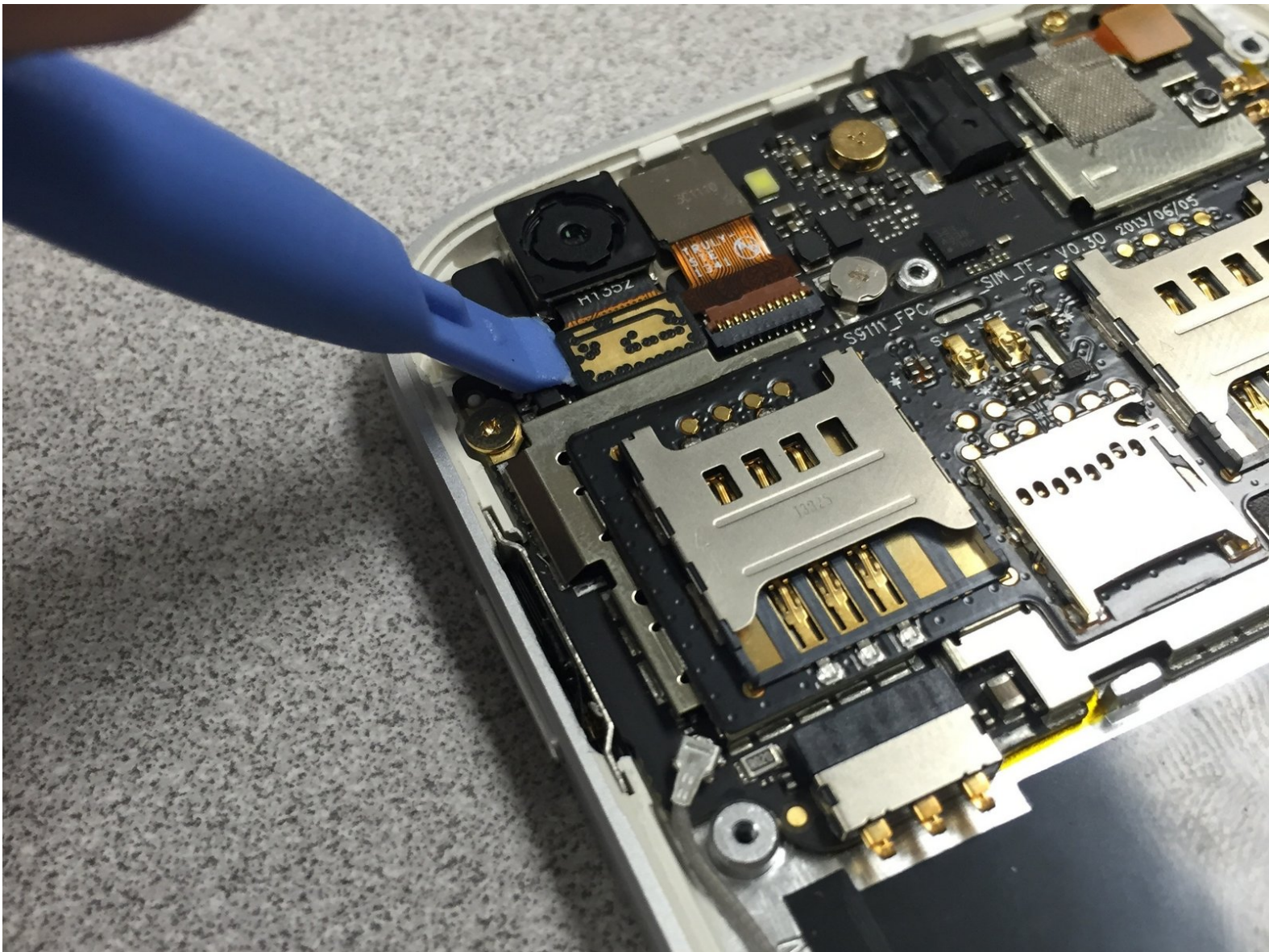




Blu L120 Rear Facing Camera Replacement

Use this guide to remove the camera.

Written By: Julio

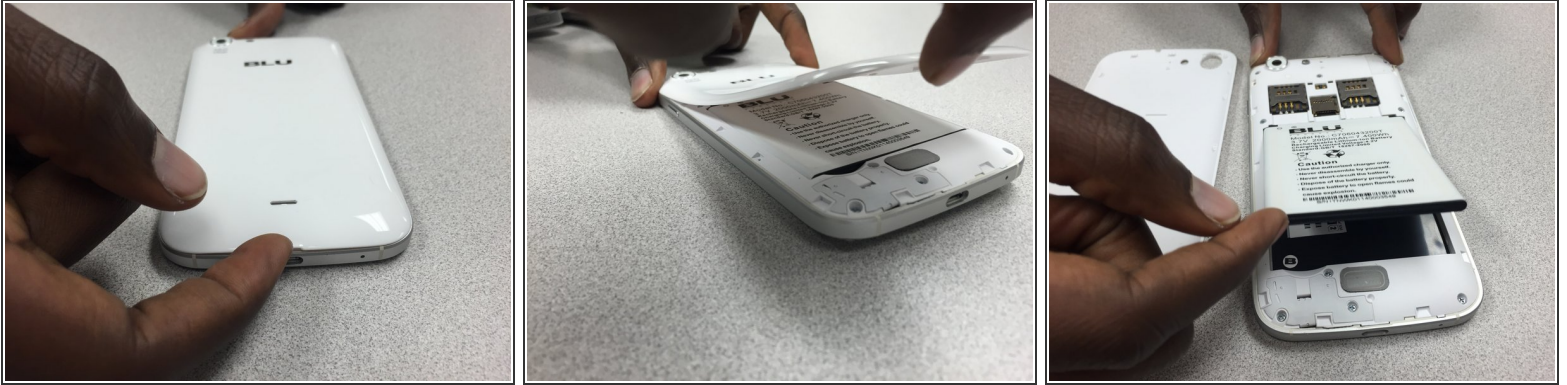




TOOLS:

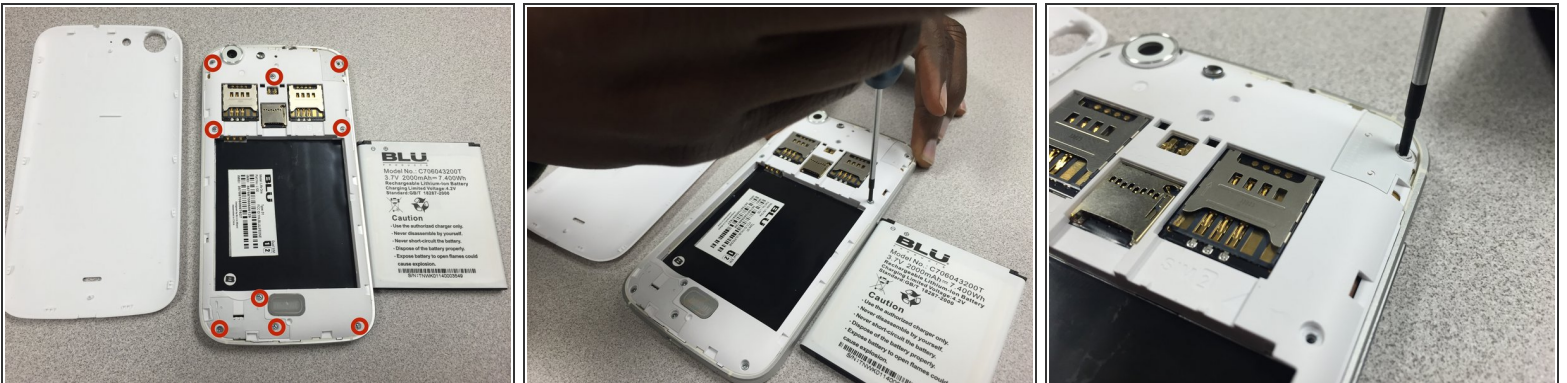
- [Phillips #00 Screwdriver](#) (1)
- [iFixit Opening Tools](#) (1)
- [Spudger](#) (1)

Step 1 — Remove back panel



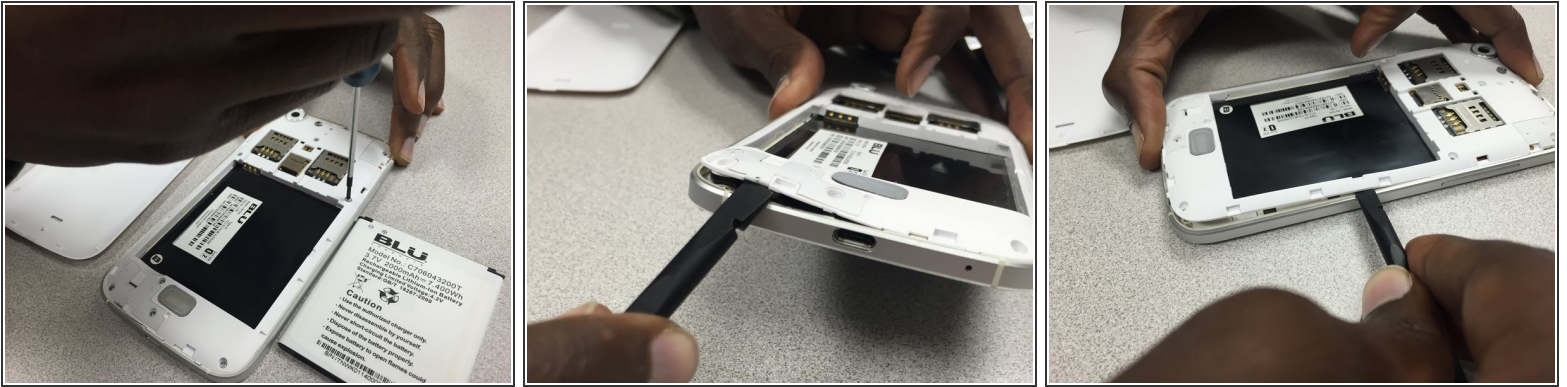
- Remove the cover by lifting the notch towards the bottom of the phone. Use your fingernail to lift it up.

Step 2 — Screw Removal



- Remove these nine screws with a small Phillips screwdriver. They are all the same size.
- There is a small screw hidden under the warranty sticker. You may either remove or poke through it .

Step 3 — Rear Panel removal



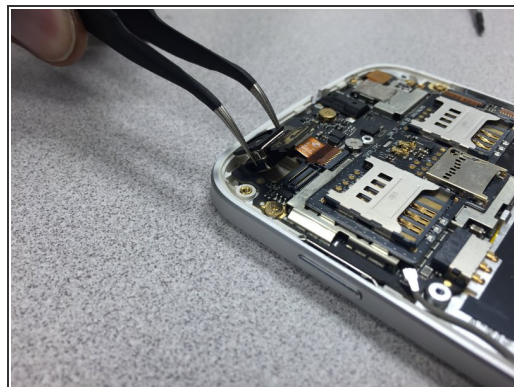
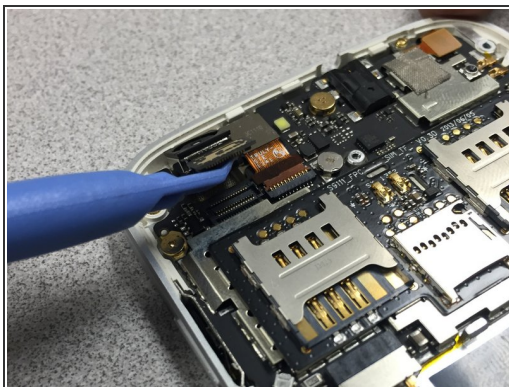
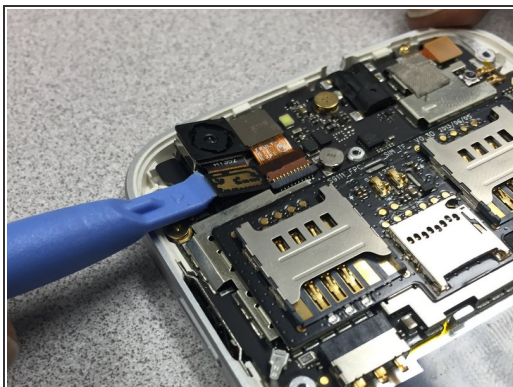
- Use the pry tool to gently separate the panel from the frame, starting from the bottom left corner and continue along the edge of the phone.
- ***WARNING*** by doing this, you will void the manufacturers warranty.

Step 4 — Separate back panel from frame



- Continue using the pry tool around the back panel of the phone to separate both pieces.
- Once you have gone around the entire frame, use both hands to pull it apart.

Step 5 — Camera Removal



- Use the pry tool to disconnect the camera from the device.
- Gently lift the camera up and use the tweezers to remove it from the phone.
- Reinstall the camera. Then follow the guide in reverse to put the phone back together.

To reassemble your device, follow these instructions in reverse order.