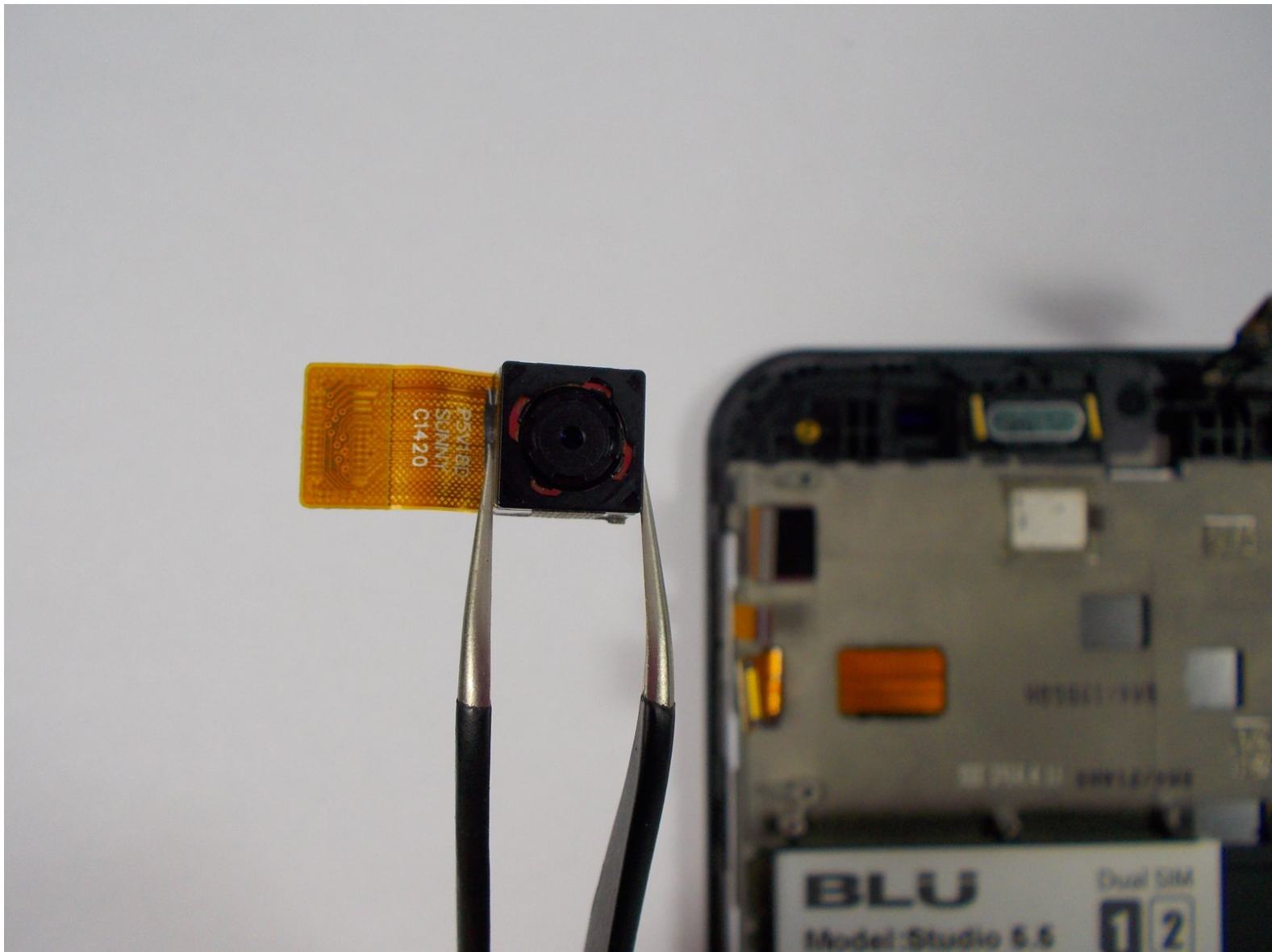




Blu Studio 5.5 Camera Replacement

This guide will go over the steps to accessing and replacing the camera component of the phone.

Written By: Brian Sullivan



INTRODUCTION

This guide will be helpful if your camera has become cloudy and in need of cleaning, or even if it needs to be replaced outright.



TOOLS:

- [Phillips #00 Screwdriver](#) (1)
 - [iFixit Opening Tools](#) (1)
 - [Tweezers](#) (1)
-

Step 1 — Battery



- Flip over your Studio 5.5 so the back is facing you.
- Use either the spudger or your fingernail to pull up on the slot in the lower left corner and remove the back cover.

Step 2



- Place your finger in the small groove beneath the battery.
- Push the battery toward the top of the phone and lift it out.

Step 3 — Camera



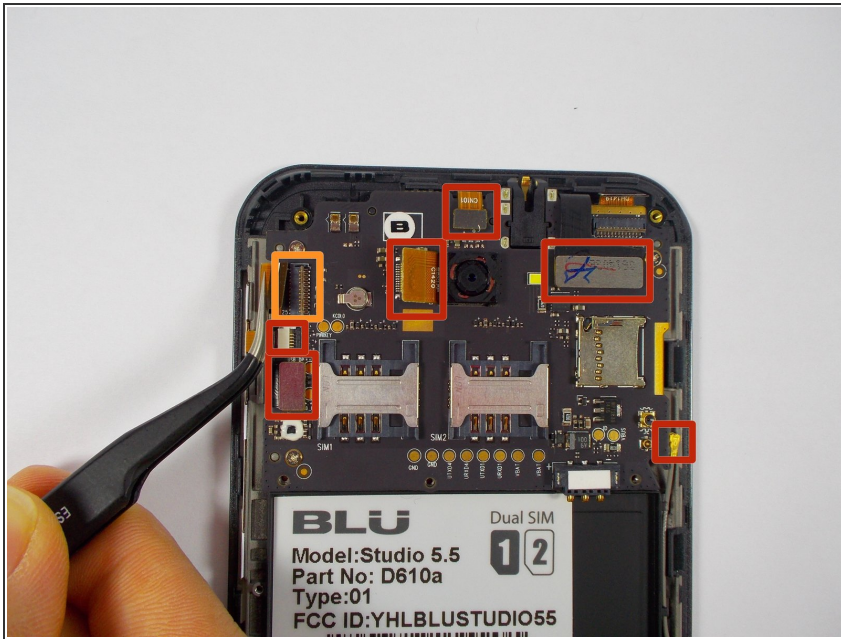
- Begin by removing the 12 3.5mm screws along the back of the device.
- 1 of these screws will be underneath a white sticker. Just press the screwdriver through it and remove it normally.

Step 4



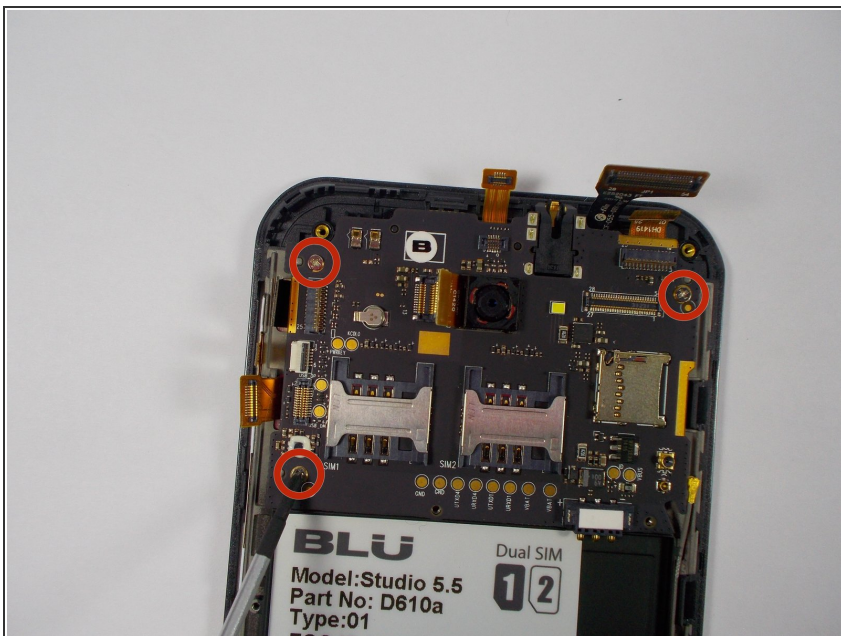
- Using your plastic opening tool, begin carefully prying the plastic shell from the phone.
- Make your way around the edge slowly and lift the shell off when you have made a full circuit.

Step 5



- Locate and unplug seven connectors on the motherboard.
- Those marked in red are pulled straight up, away from the phone.
- The connector marked in orange is pulled out horizontally.

Step 6



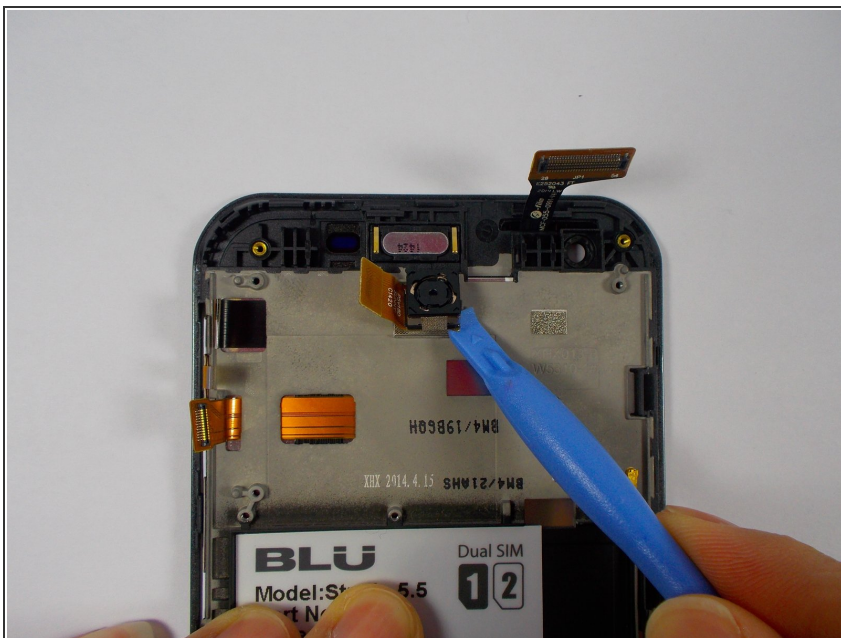
- Unscrew the three 3.5mm screws securing the motherboard in place.

Step 7



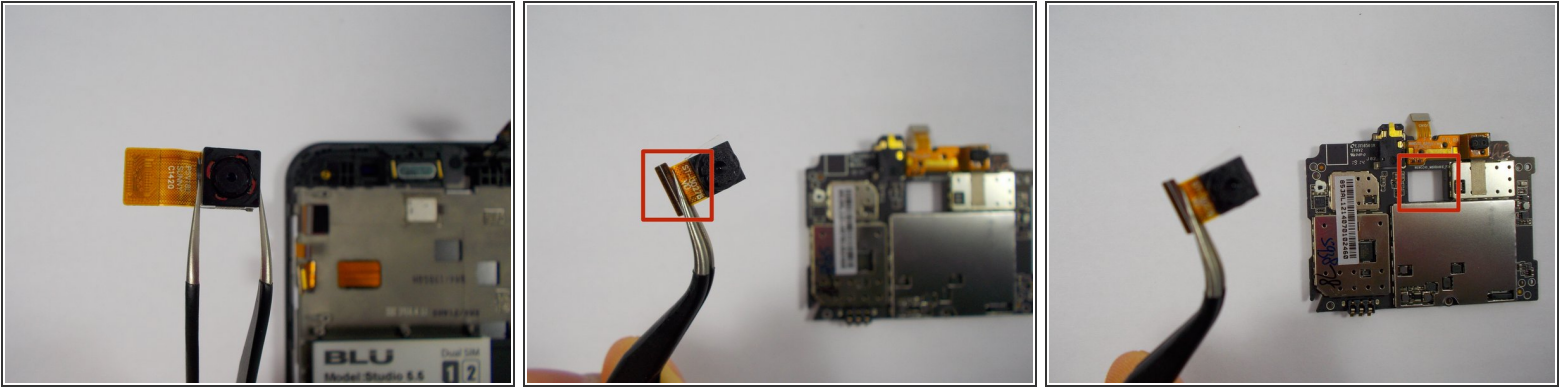
- Using the plastic opening tool, you can now lift the motherboard straight up and out.

Step 8



- Carefully wedge the plastic remover tool underneath the corner of the camera module and slowly pry until it comes free.

Step 9



- Use tweezers to lift the camera module out, taking care not to get any fingerprints on it.
- ⓘ During reassembly, make sure the ribbon attached to the camera goes up and through the square hole on the motherboard so it is able to reconnect properly.

To reassemble your device, follow these instructions in reverse order.