



Blu Studio 5.5 S Midframe Replacement

This is an intermediary step for removing the midframe of the Blu Studio 5.5 S.

Written By: Cody Dyl



INTRODUCTION

Prerequisite Only



TOOLS:

- [Spudger](#) (1)
 - [Phillips #00 Screwdriver](#) (1)
-

Step 1 — Back Casing



- In order to remove the back case, start by flipping the phone to the back side and look at it from the top.

Step 2 — Applying Pressure



- Place your finger in the small notch on the left side of the charging port (facing from the back).
- Once your finger is in the notch, pull the back case towards yourself to remove it.

Step 3 — Battery



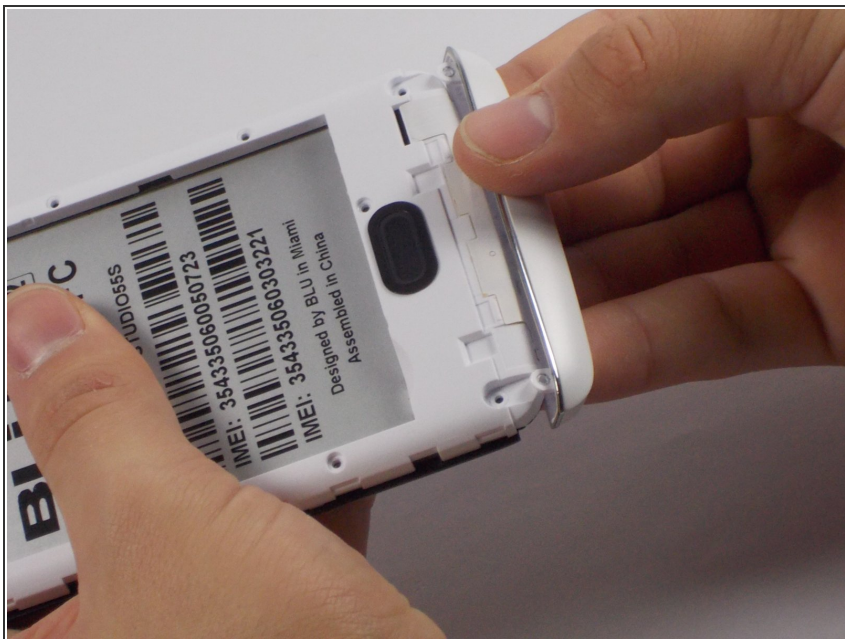
- Once the back case is removed, locate the battery. It is the large brick embedded in the phone. It has BLU Products, a caution statement, and a barcode on it.
- Insert your finger into the notch near the lower left of the battery, apply pressure and lift up.

Step 4 — Midframe



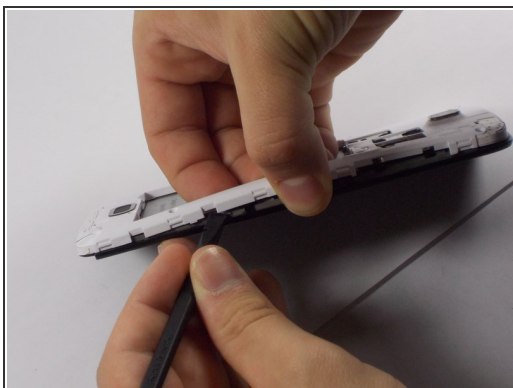
- The speaker is located behind the inner back case. Using a Phillips #0 screwdriver, unscrew the 10, 7mm screws.
- Using the Phillips #00 screwdriver, unscrew the two, 10mm screws at the bottom.

Step 5 — Aesthetic Bottom Case



- Apply pressure and pop off the bottom aesthetic case, being careful not to break it.

Step 6



- Use the Spudger to pop the inner back casing off. Do this by lightly raising the side of the battery housing, then sliding the Spudger around the case.
- Pick up the inner back case and flip it over.

To reassemble your device, follow these instructions in reverse order.