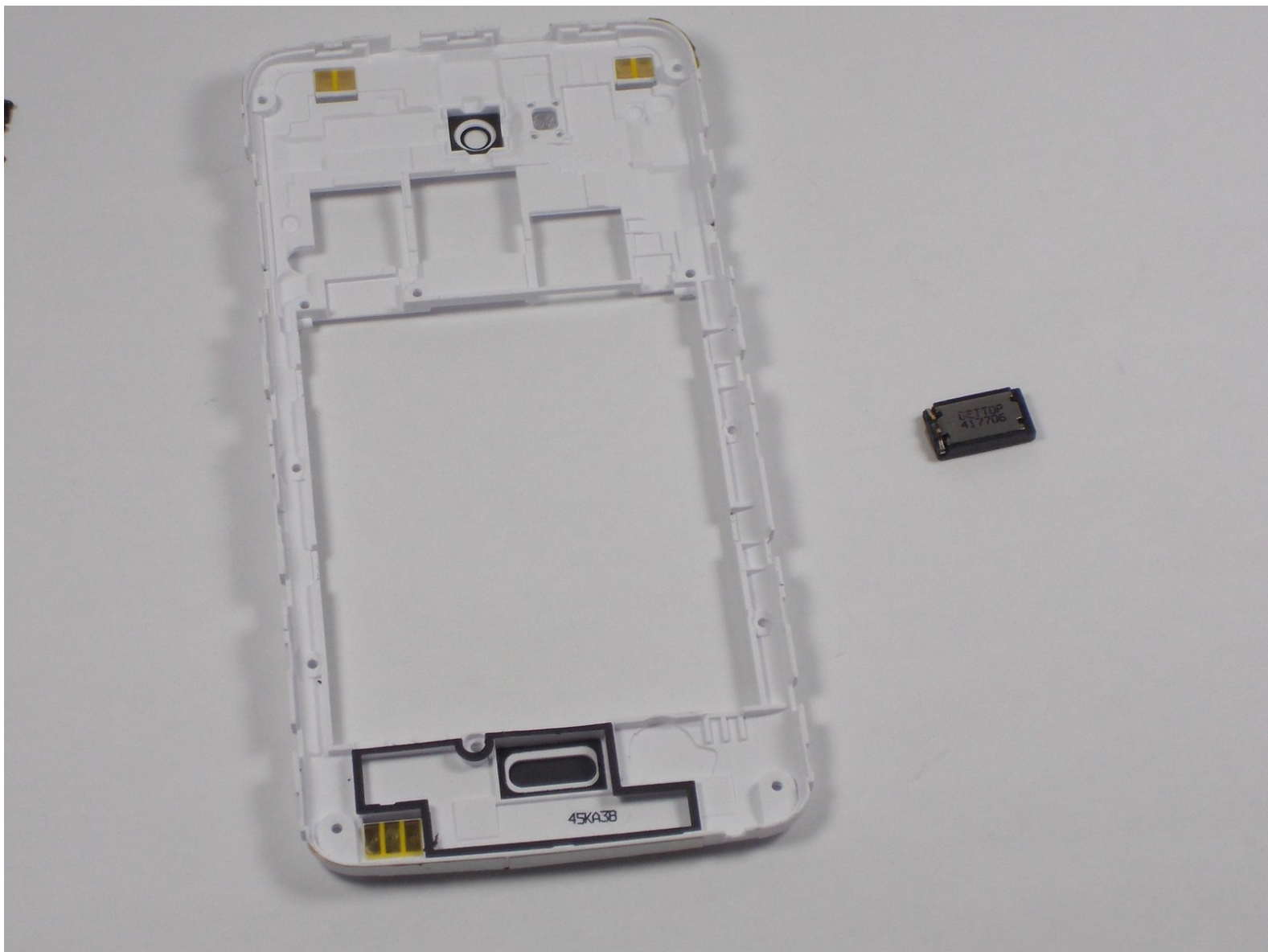




# Blu Studio 5.5 S Speaker Replacement

This guide will show you where the speaker is located in the Blu Studio 5.5 S smartphone and how to replace it.

Written By: Cody Dyl



---

# INTRODUCTION

This guide will describe how to take apart the Blu Studio 5.5 S to access the phone's speaker.

---



## TOOLS:

- [Spudger](#) (1)
  - [Tweezers](#) (1)
  - [Phillips #00 Screwdriver](#) (1)
-

## Step 1 — Back Casing



- In order to remove the back case, start by flipping the phone to the back side and look at it from the top.

## Step 2 — Applying Pressure



- Place your finger in the small notch on the left side of the charging port (facing from the back).
- Once your finger is in the notch, pull the back case towards yourself to remove it.

## Step 3 — Battery



- Once the back case is removed, locate the battery. It is the large brick embedded in the phone. It has BLU Products, a caution statement, and a barcode on it.
- Insert your finger into the notch near the lower left of the battery, apply pressure and lift up.

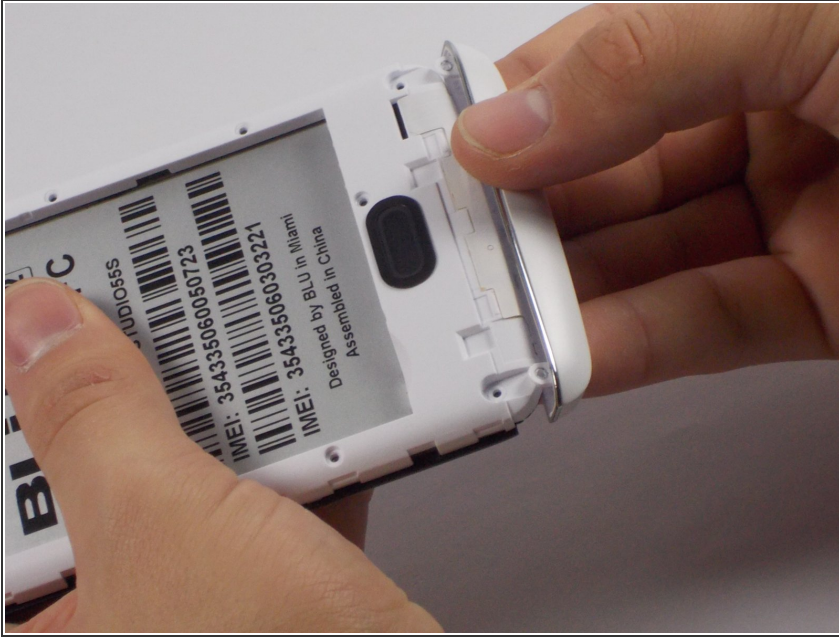
## Step 4 — Midframe



- The speaker is located behind the inner back case. Using a Phillips #0 screwdriver, unscrew the 10, 7mm screws.
- Using the Phillips #00 screwdriver, unscrew the two, 10mm screws at the bottom.

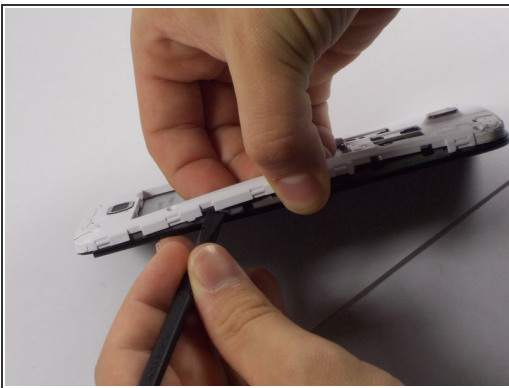


## Step 5 — Aesthetic Bottom Case



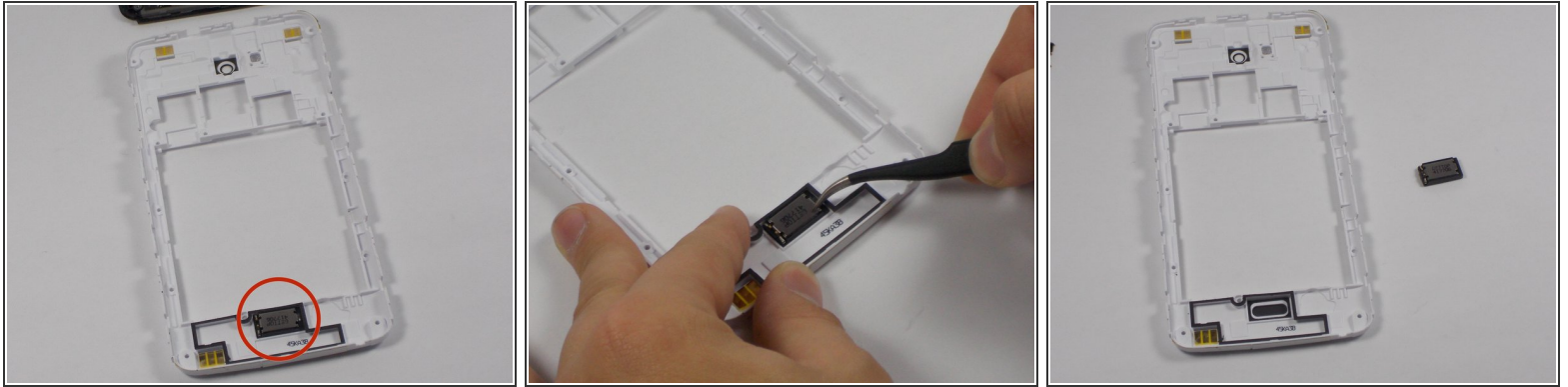
- Apply pressure and pop off the bottom aesthetic case, being careful not to break it.

## Step 6



- Use the Spudger to pop the inner back casing off. Do this by lightly raising the side of the battery housing, then sliding the Spudger around the case.
- Pick up the inner back case and flip it over.

## Step 7 — Speaker



- The speaker is located on the bottom of the back inner case. To remove it, use a pair of angled tweezers.
- Use the tweezers to remove the speaker off of the casing.
- ⓘ Only put the tweezers in enough to gain leverage.

To reassemble your device, follow these instructions in reverse order.