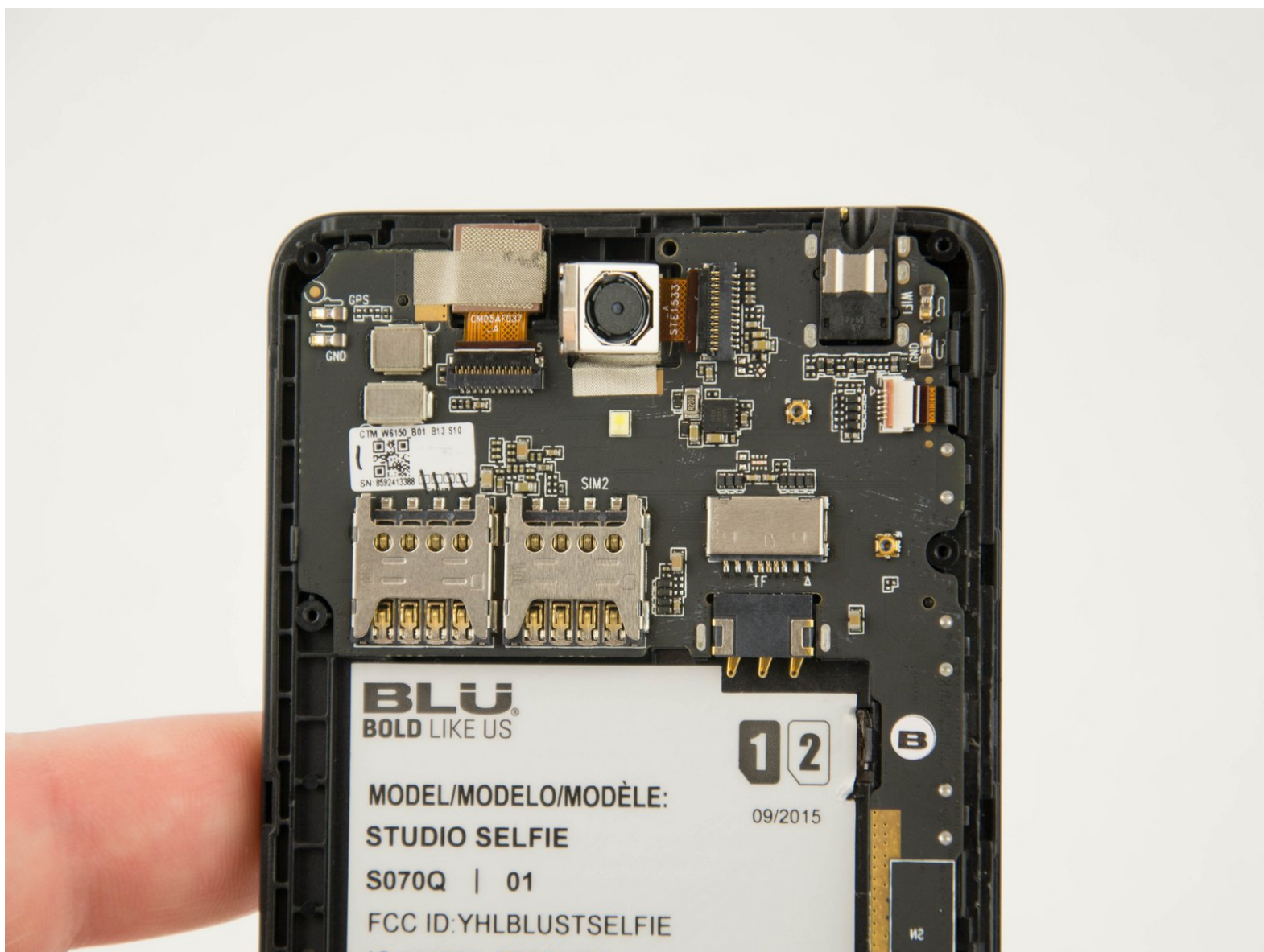




Blu Studio Selfie Rear Facing Camera Replacement

This guide will show how to replace the rear-facing camera in the Blu Studio Selfie.

Written By: Stacy Kam



INTRODUCTION

Use this guide to replace the rear-facing camera in the Blu Studio Selfie.



TOOLS:

- [Phillips #000 Screwdriver](#) (1)
 - [iFixit Opening Tools](#) (1)
 - [Screwdriver](#) (1)
 - [Tweezers](#) (1)
-

Step 1 — Rear Cover



- ⚠ Make sure your phone is powered off.
- Turn the front of the phone away from you.
- Run your fingers along the sides of the phone to identify where the case can be pulled apart.

Step 2



- Insert the flat end of your plastic opening into the crevice you found along the side of the phone.
- Gently apply pressure until you feel the back case pop free of the phone.
- Continue the previous two steps around the rest of the phone until the case is fully removed.

Step 3 — Battery



- Identify the crevice at the bottom of the battery.
- ❗ There should be enough space for you to fit your fingernail between the battery and the phone.
- Gently lift the battery free of the phone.

Step 4 — Midframe



- Remove all the 4mm Phillips #000 screws from the midframe.

Step 5



- Insert the spudger between the midframe and the display assembly.
- Gently pry up the midframe.

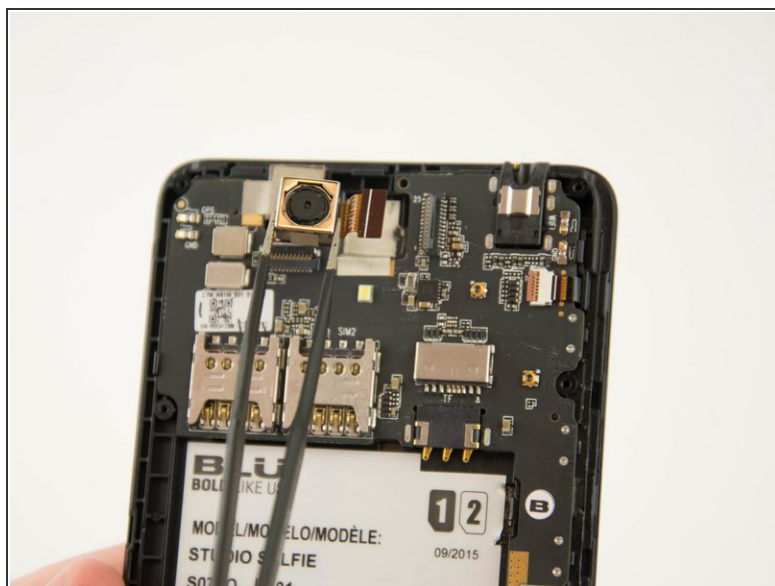
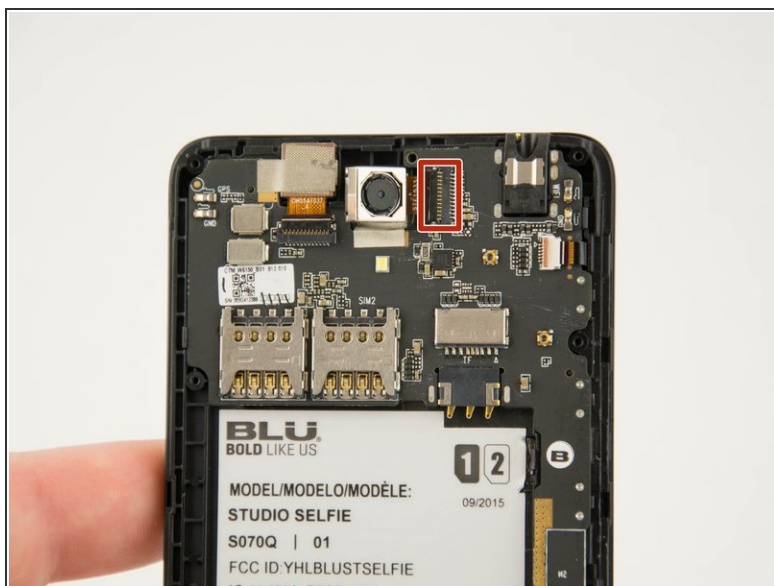
⚠ When working with electronics, it's important to choose a tool that's ESD-safe to avoid accidental damage to the device. The metal spudger is great when you need serious prying power, but the regular black nylon spudger or a plastic opening tool should be used whenever possible.

Step 6



- i** Where the battery rested before, you will find a small clip that holds down the midframe.
- After the rest of the midframe is detached, from the phone place the flat end of the spudger beneath the clip.
- Gently lift up on the clip until it comes free.
- Remove the midframe from the phone.

Step 7 — Rear Facing Camera



- Flip up the retaining flap on the camera cable ZIF connector.
- Pull the camera's ribbon cable straight out of its socket.
- Gently remove the rear facing camera.

To reassemble your device, follow these instructions in reverse order.