



Boogie Board Rip Battery Replacement

The official troubleshooting guide for this device states that the battery cannot be replaced except by a professional. With this guide, you become the professional. Here is how to access the internal components and replace the battery.

Written By: Gareth



INTRODUCTION

This guide shows how to safely access the device's internal components, including circuit board, battery, and internal antenna.



TOOLS:

- [Spudger](#) (1)
 - [iFixit Opening Picks set of 6](#) (1)
 - [64 Bit Driver Kit](#) (1)
-

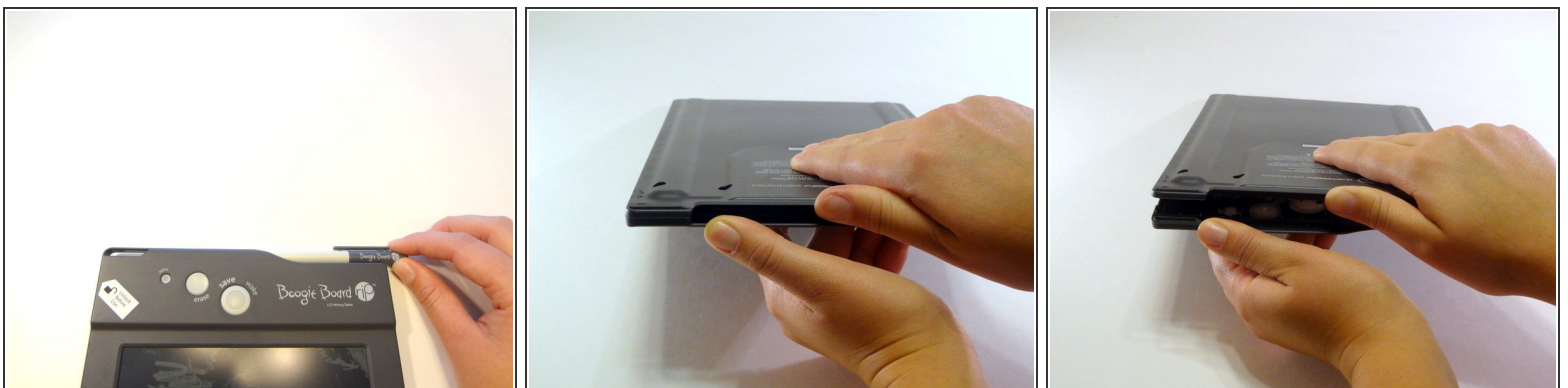
Step 1 — Accessing the internal components



- On the back of the device, remove the four 3/8" Torx head screws using the T-6 Torx bit.

i A Torx bit is the piece that is inserted into a bit driver, also known as a screw driver.

Step 2




- Remove the stylus if it is in the housing at the top of the device.
- Turn the device so you are looking at it from the top down.
- Using your thumbs on each wall of the stylus housing, open the frame of the device by gently pulling the two sides apart.

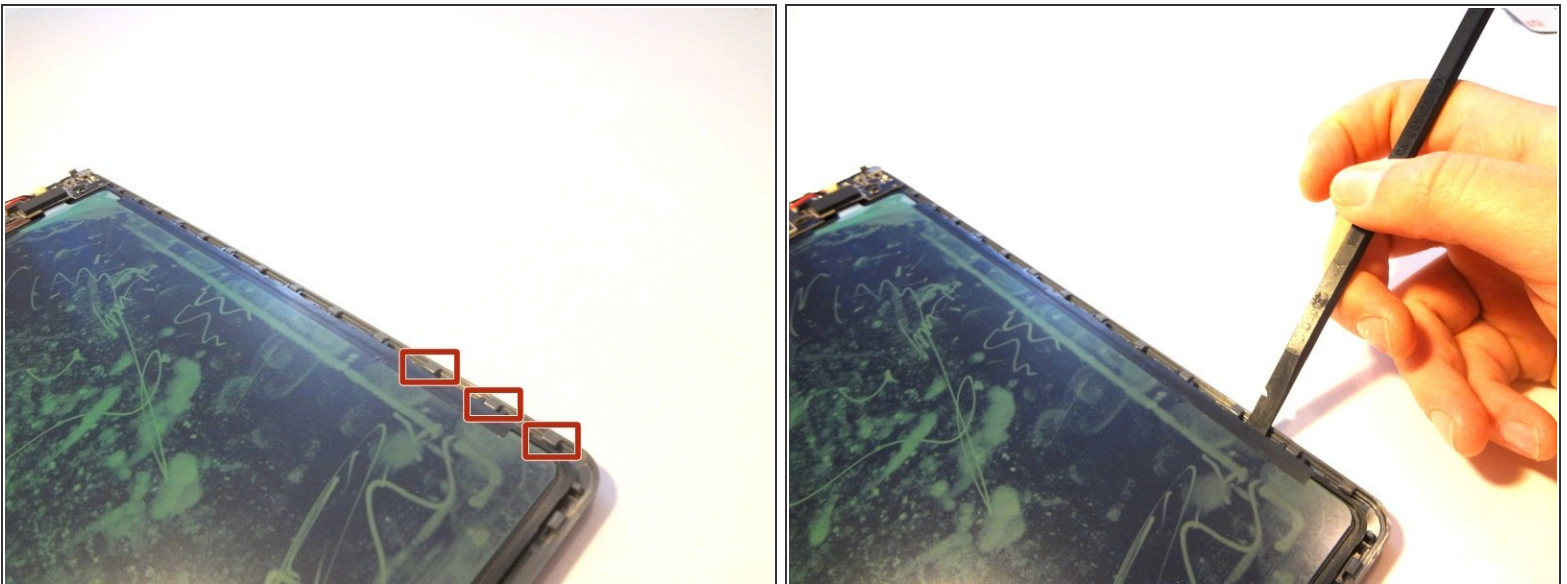
Step 3



- Insert a spudger into the seam between the front and back plates of the frame. Unsnap the snaps around the entire frame of the device.
- Remove the front face plate by pulling it straight up.

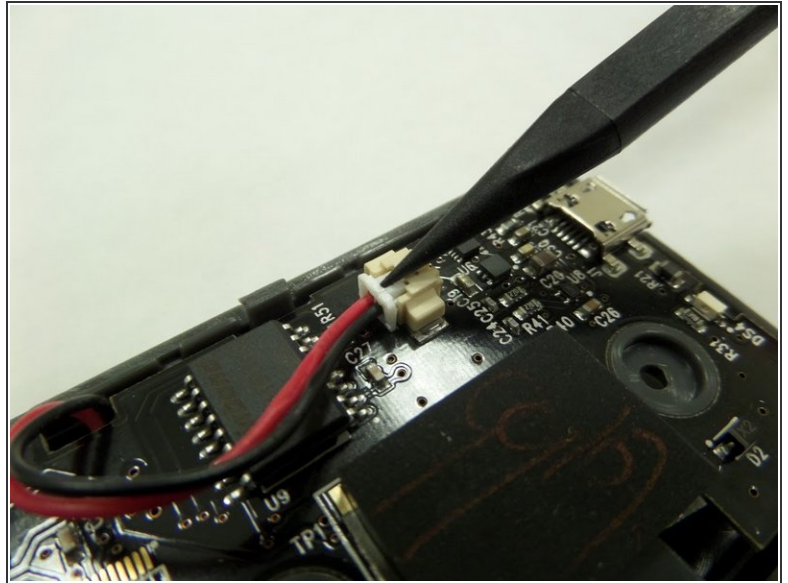
 The unlock switch on the device's side might come off while undoing the internal snaps or removing the face plate. This is perfectly normal.

Step 4



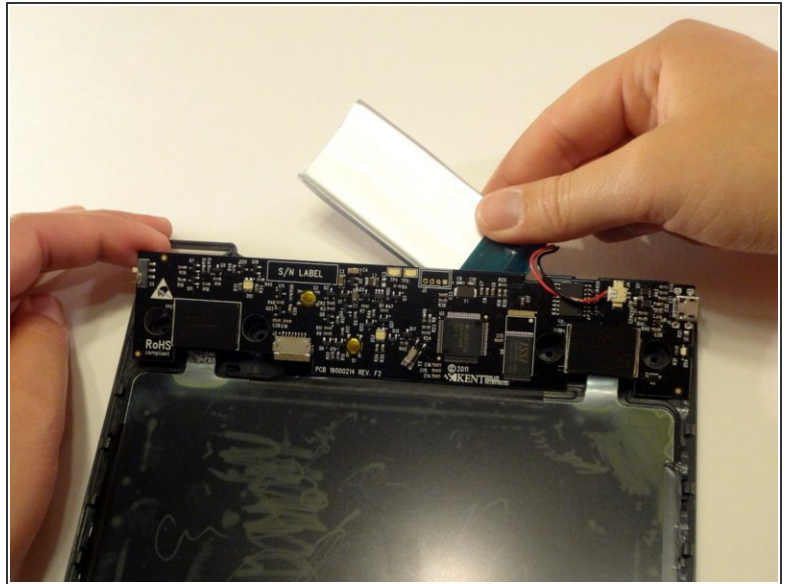
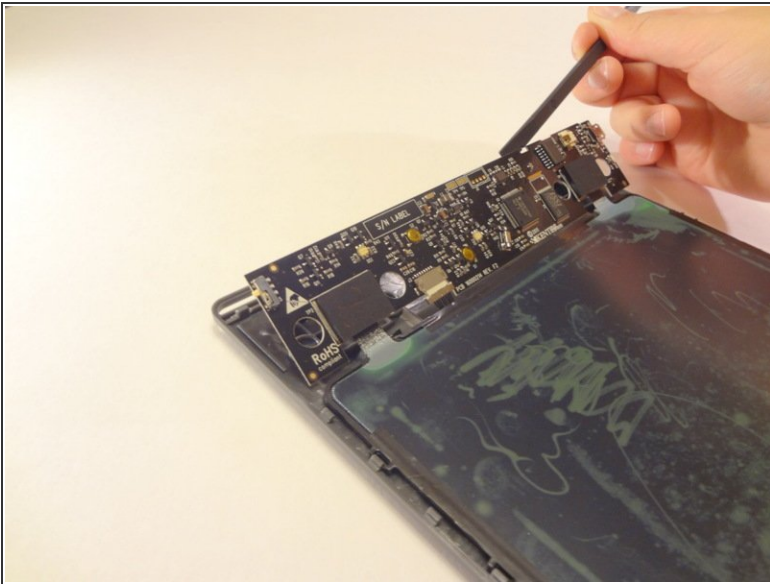
- Use a spudger (or gently bend the back plate of the device) to unsnap the snaps holding the screen in place.

Step 5



- With a spudger, press against the lip of the connector closest to the wires to remove the battery connector from the motherboard.

Step 6



- Gently lift the motherboard with a spudger or small object by inserting it in the seam between the back frame and the motherboard.
- Remove the battery hidden behind the motherboard.

To reassemble your device, follow these instructions in reverse order.