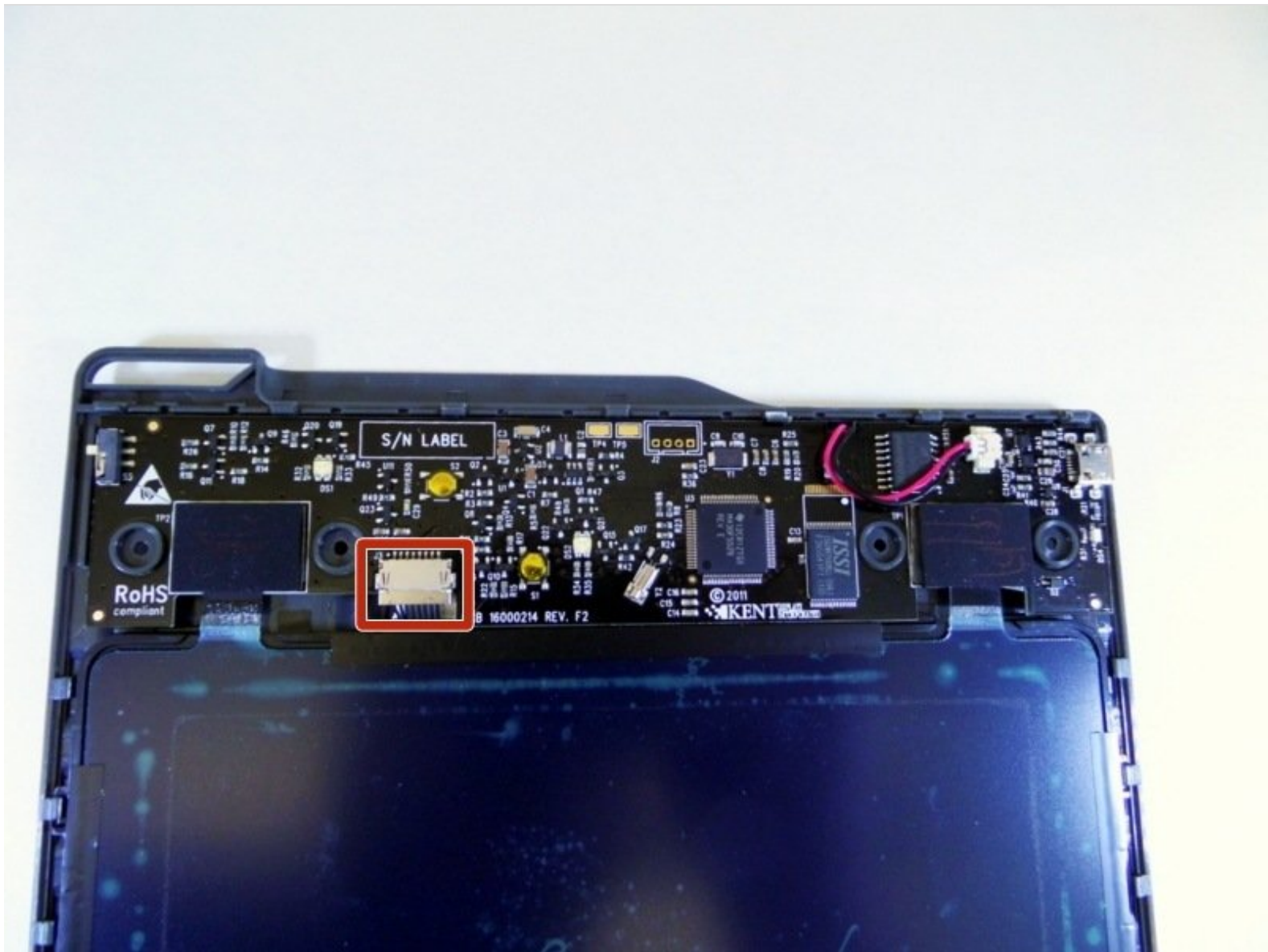




Boogie Board Rip Internal Antenna Replacement

The Internal antenna uses electronic components within the stylus to track the stylus's movement as you draw. This information allows your image to be saved on the internal memory. You might need to replace the antenna if it stops capturing your image.

Written By: Gareth

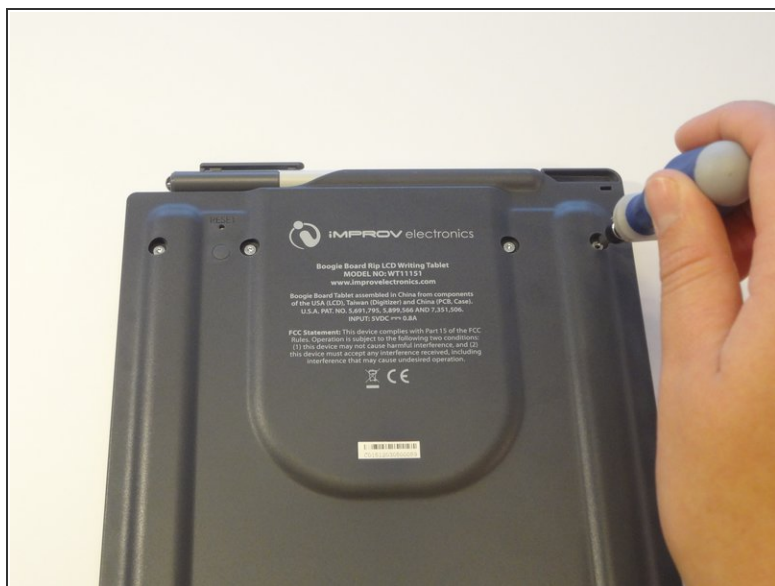




TOOLS:

- [Tweezers](#) (1)
 - [Spudger](#) (1)
 - [iFixit Opening Picks set of 6](#) (1)
 - [64 Bit Driver Kit](#) (1)
-

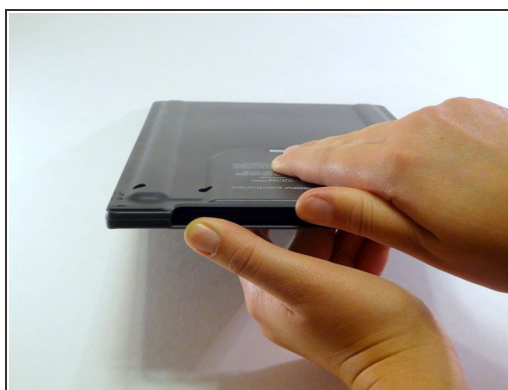
Step 1 — Accessing the internal components



- On the back of the device, remove the four 3/8" Torx head screws using the T-6 Torx bit.

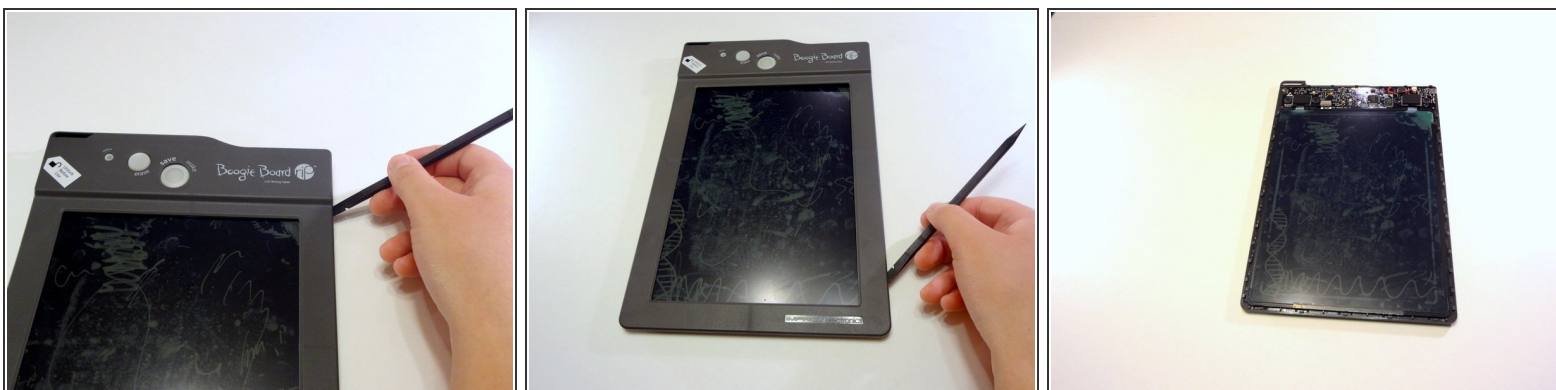
i A Torx bit is the piece that is inserted into a bit driver, also known as a screw driver.

Step 2




- Remove the stylus if it is in the housing at the top of the device.
- Turn the device so you are looking at it from the top down.
- Using your thumbs on each wall of the stylus housing, open the frame of the device by gently pulling the two sides apart.

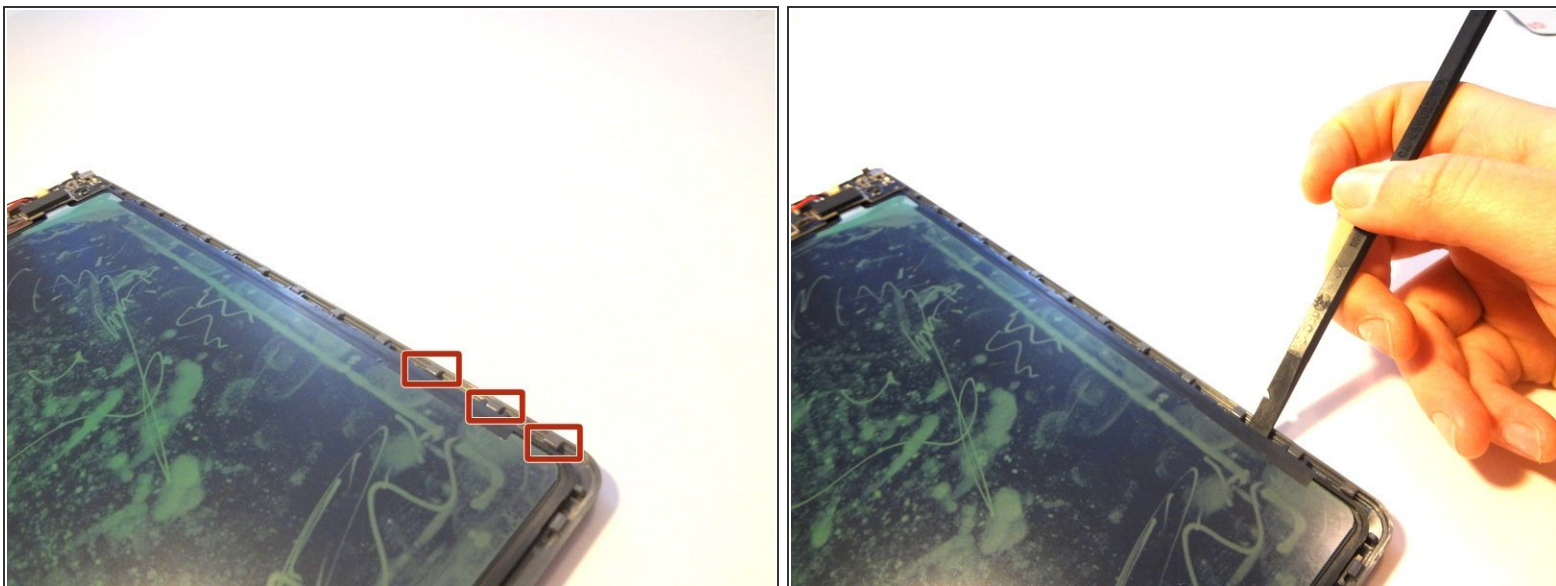
Step 3



- Insert a spudger into the seam between the front and back plates of the frame. Unsnap the snaps around the entire frame of the device.
- Remove the front face plate by pulling it straight up.

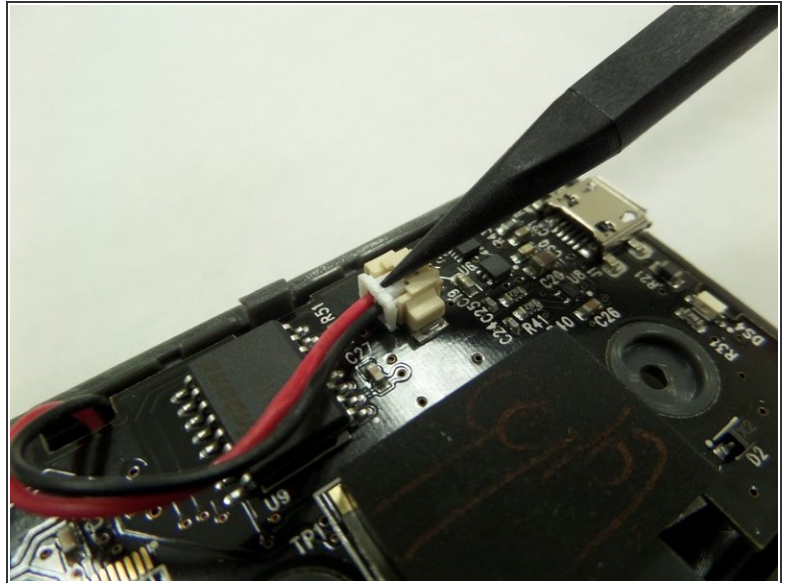
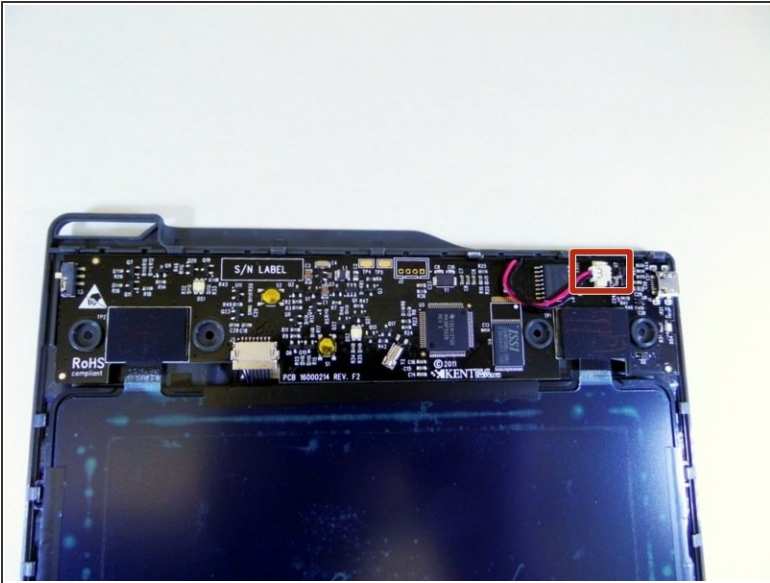
 The unlock switch on the device's side might come off while undoing the internal snaps or removing the face plate. This is perfectly normal.

Step 4



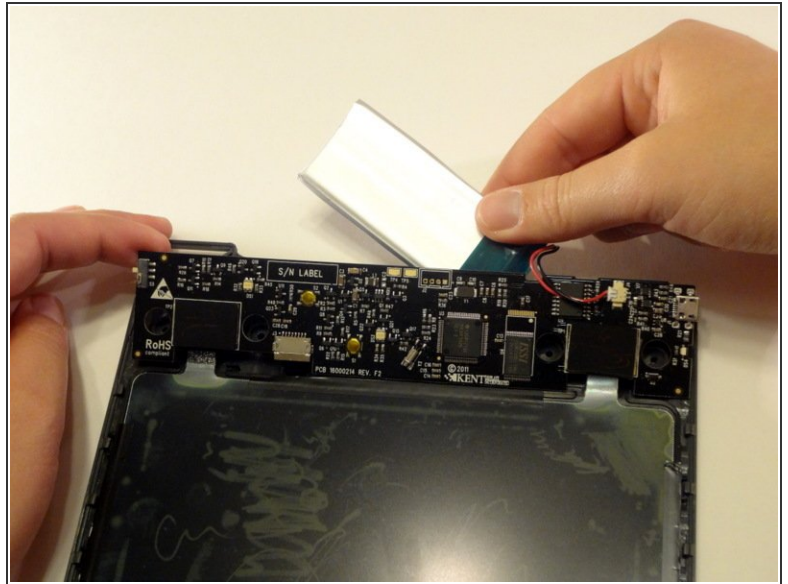
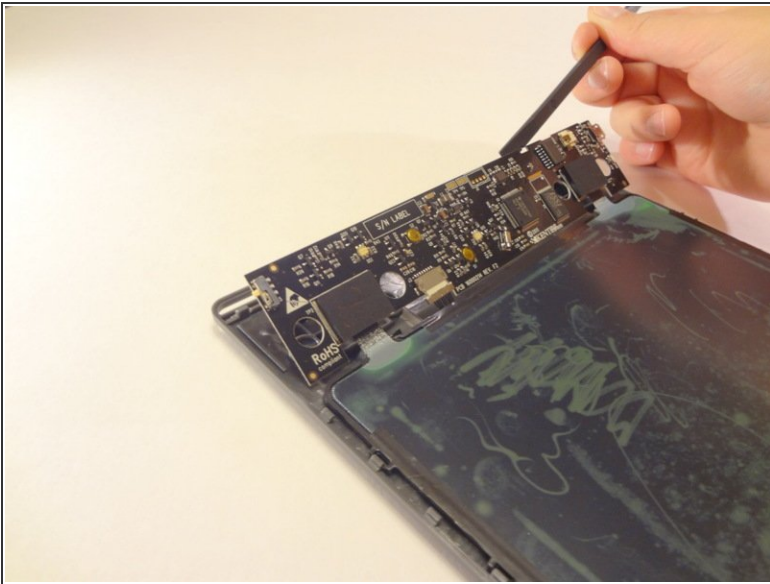
- Use a spudger (or gently bend the back plate of the device) to unsnap the snaps holding the screen in place.

Step 5



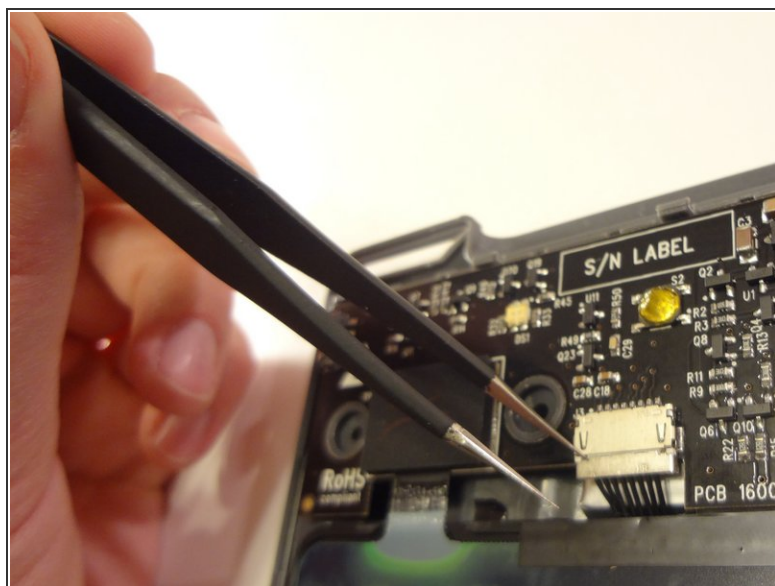
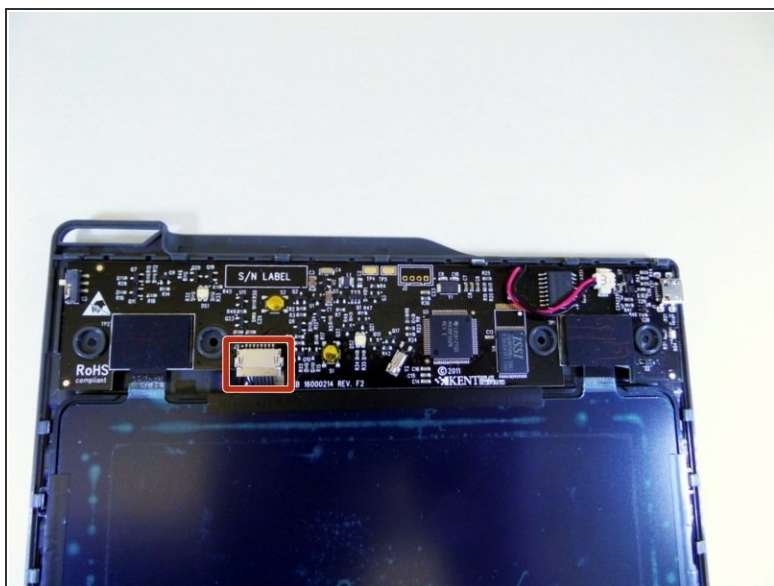
- With a spudger, press against the lip of the connector closest to the wires to remove the battery connector from the motherboard.

Step 6



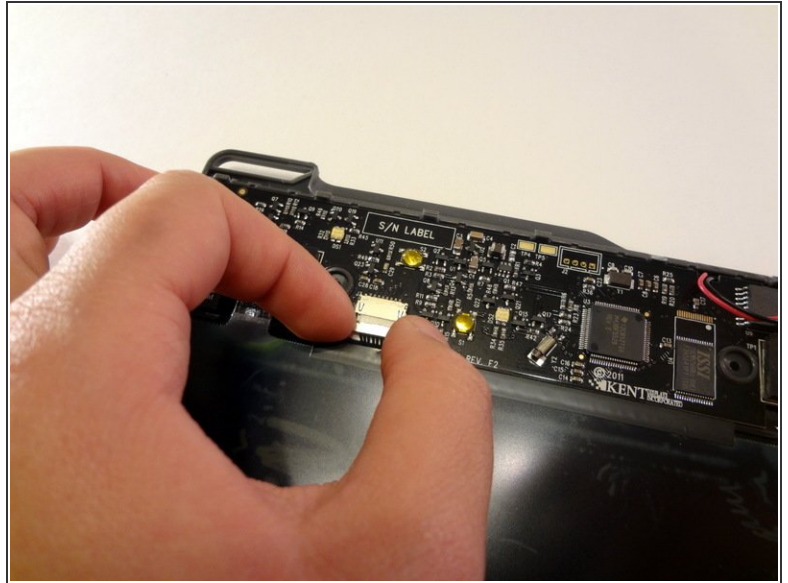
- Gently lift the motherboard with a spudger or small object by inserting it in the seam between the back frame and the motherboard.
- Remove the battery hidden behind the motherboard.

Step 7 — Remove the antenna connector from the motherboard



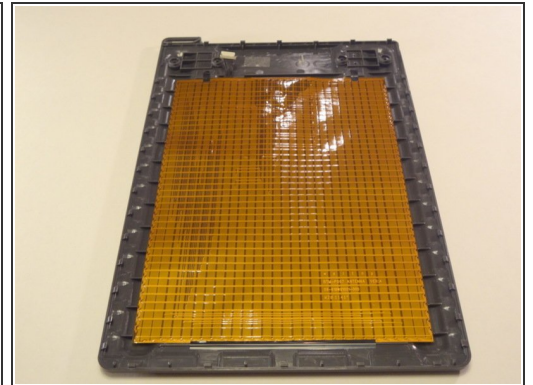
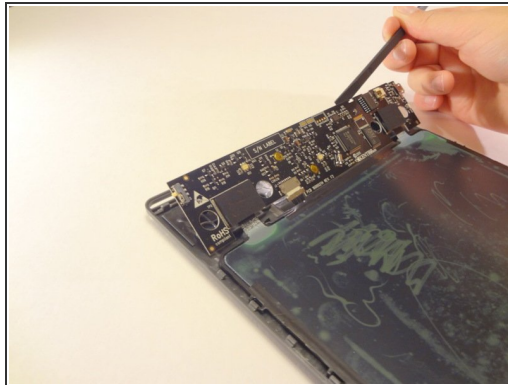
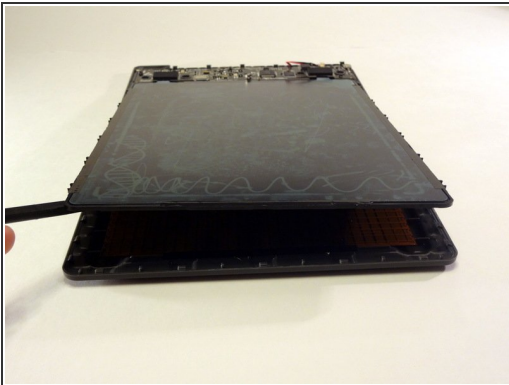
- Use a pair of tweezers or a small, pointed object to gently pull the connector out on both the left and right sides.
- ⓘ Work out both sides evenly. The connector uses straight pins to attach to the motherboard. If the connector is not pulled out straight, you might have difficulty disconnecting the piece from the motherboard.

Step 8



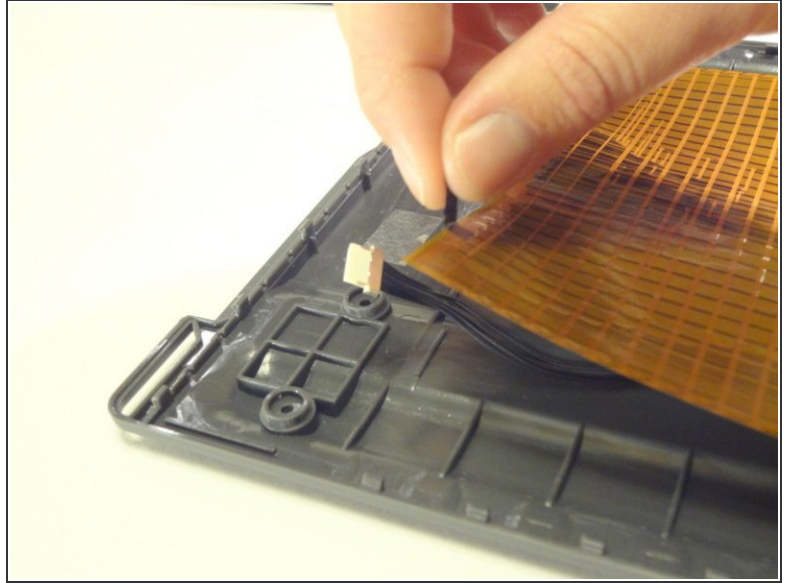
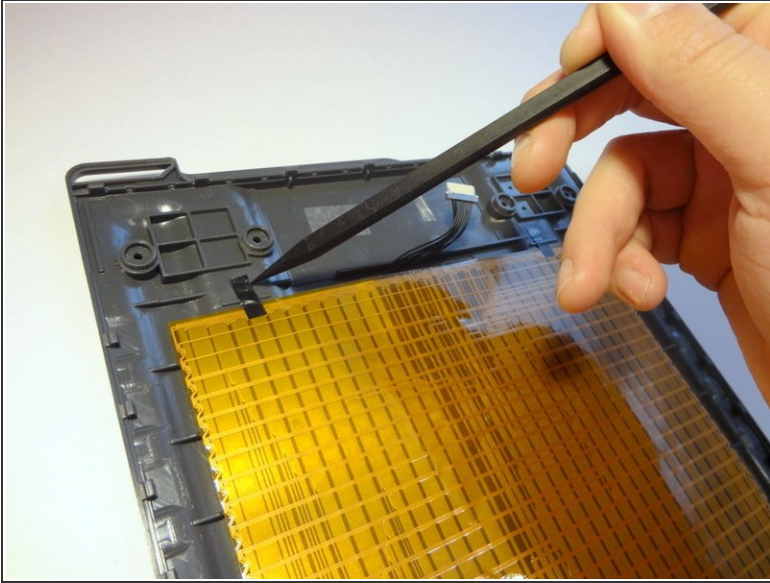
- Once you see an even white line of the plastic pin casing appear (about 1 mm), use your index finger and thumb to pull the connector straight out from the motherboard.

Step 9 — Remove internal components



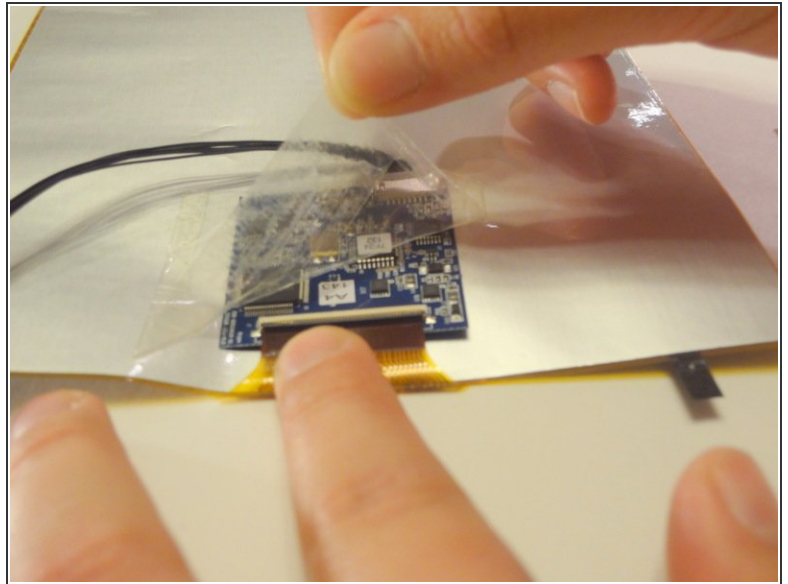
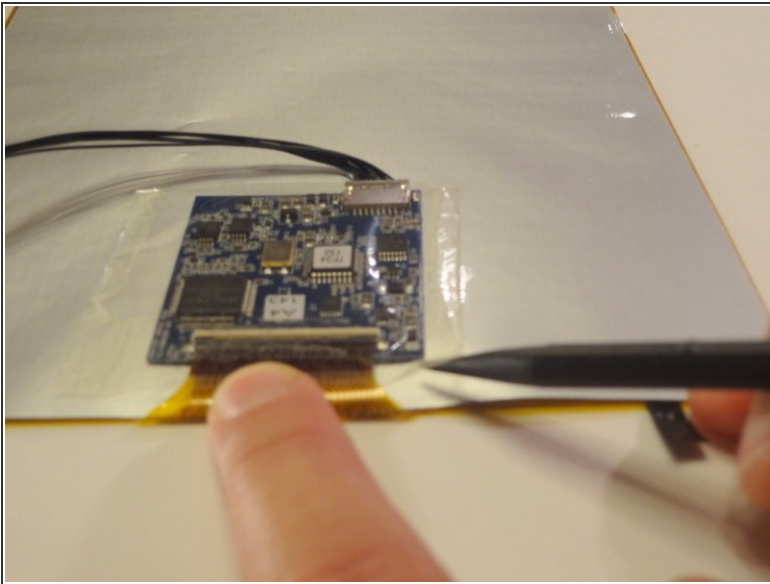
- Using a spudger or prying tool, lift the connected screen and motherboard straight up to expose the gold-colored antenna taped to the back plate.
- ⓘ While removing the motherboard/screen, ensure the antenna connector cable is not damaged by guiding it through the open slot between the motherboard and the screen.

Step 10 — Remove electrical tape



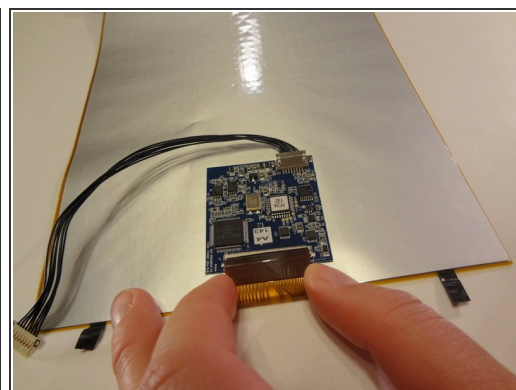
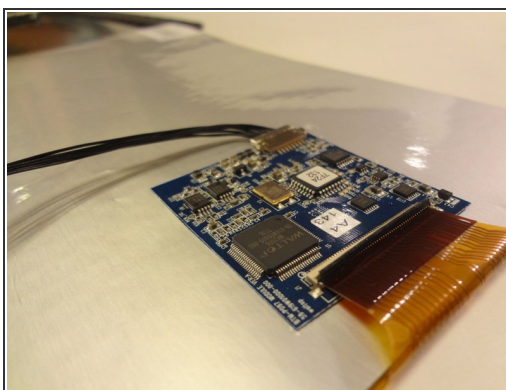
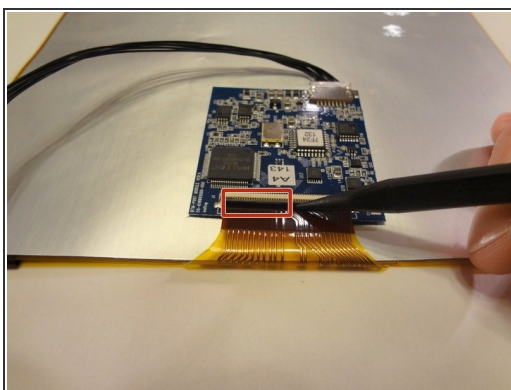
- Using a spudger or your fingernail, remove the black electrical tape securing the antenna to the black plate.

Step 11 — Remove antenna transformer



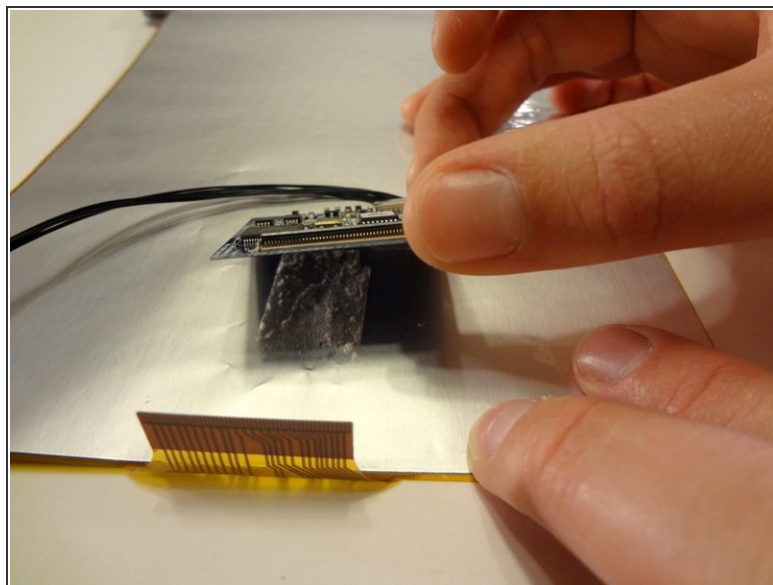
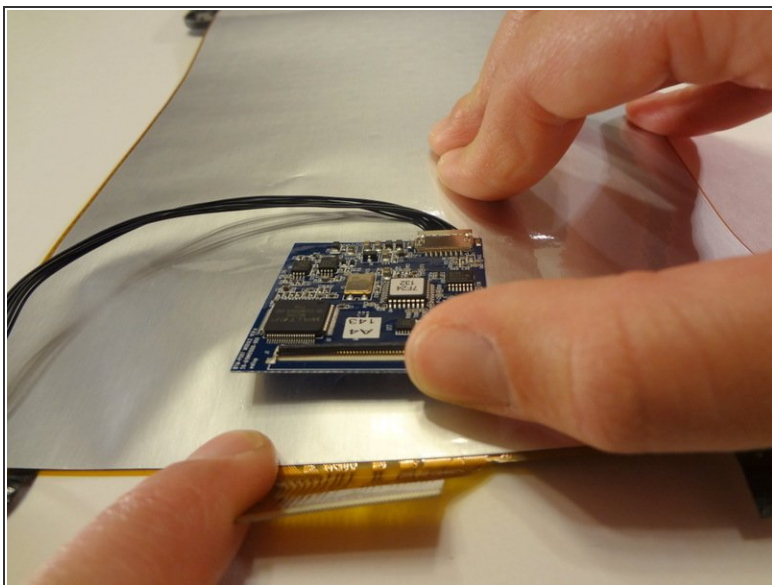
- On the back side of the antenna, use a spudger or your fingernail to remove the transparent tape holding the transformer to the antenna.

Step 12



- Using a spudger or the nail of your thumb, lift the black cover securing the antenna to the transformer up and away from yourself.
- Using your index finger and thumb, disconnect the antenna from the transformer.

Step 13 — Unattach transformer from antenna.



- Gently pull apart the transformer from the back of the antenna.
- ⓘ The glue is weak enough to detach the two parts without damaging either item. Use care to remove the transformer slowly.

To reassemble your device, follow these instructions in reverse order.