



# Boombotix Boombot Mini Speaker Replacement

Replace the speaker in your Boombotix Boombot Mini.

Written By: Riley Grogg



---

## INTRODUCTION

Use this guide to replace a speaker in the Boombotix Boombot Mini.



### TOOLS:

- [Essential Electronics Toolkit](#) (1)
-

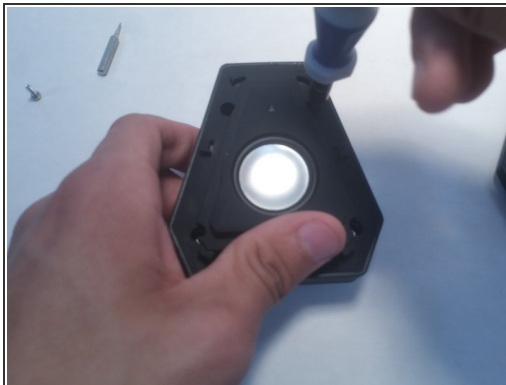
## Step 1 — Speaker



- Twist the front panel of the speaker to the left.

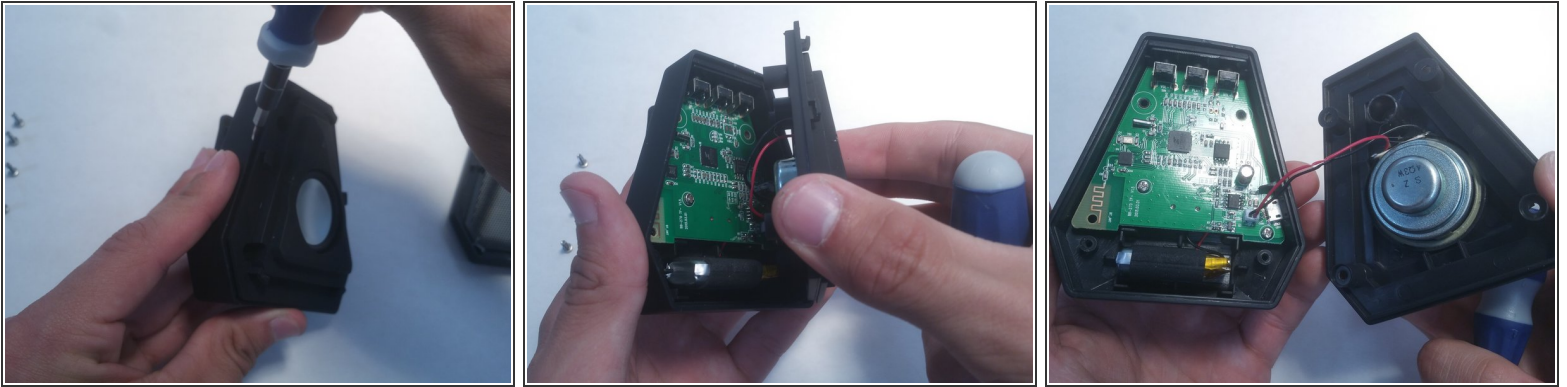
⚠ Do not try to pry or pop off the front panel.

## Step 2



- Take out the four screws, then remove the panel that contains the speaker.

## Step 3



- Take the speaker off of the base.
  - Expose the motherboard and place the speaker next to it.
- ⚠ Be careful not to tangle or damage the wires connecting the speaker.
- ⓘ This panel will be harder to get off. Use something small such as a card to create a lip for leverage.

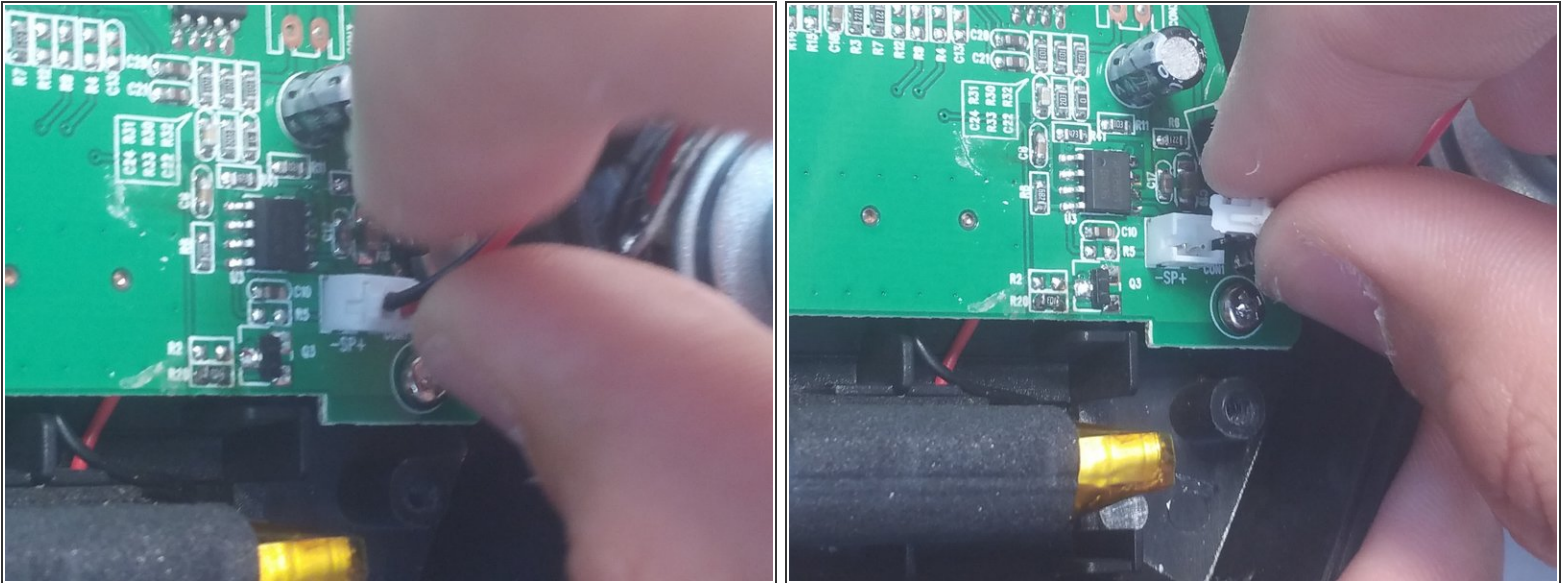
## Step 4



- Find the connection of the speaker by following the wires.
- ⚠ Do not damage the battery. Make sure not to use any metal object to poke around in the device because of possible shock.

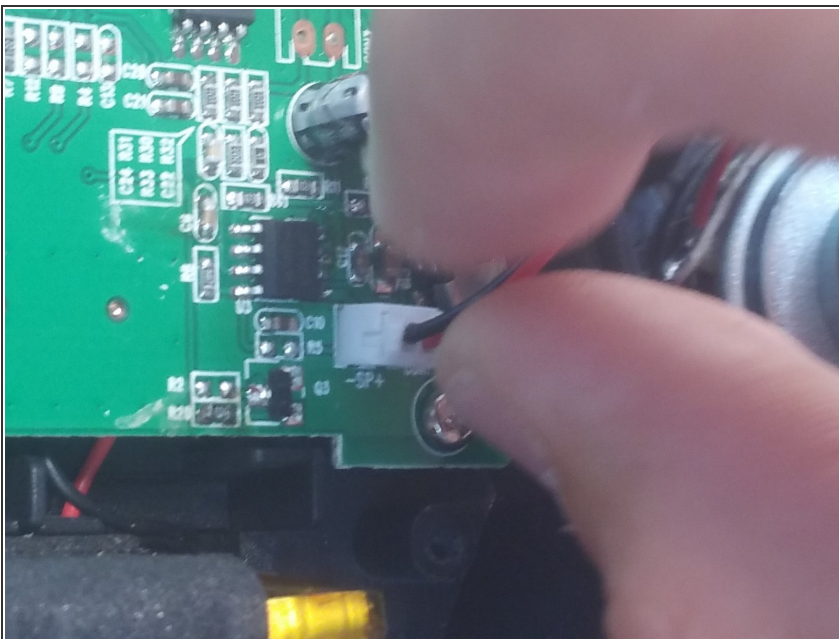


## Step 5



- Now that you have found the wire connection to the motherboard, disconnect it.
- ⓘ Pull the wire straight out.

## Step 6



- Connect the white plug of the new speaker to the motherboard.

To reassemble your device, follow these instructions in reverse order.