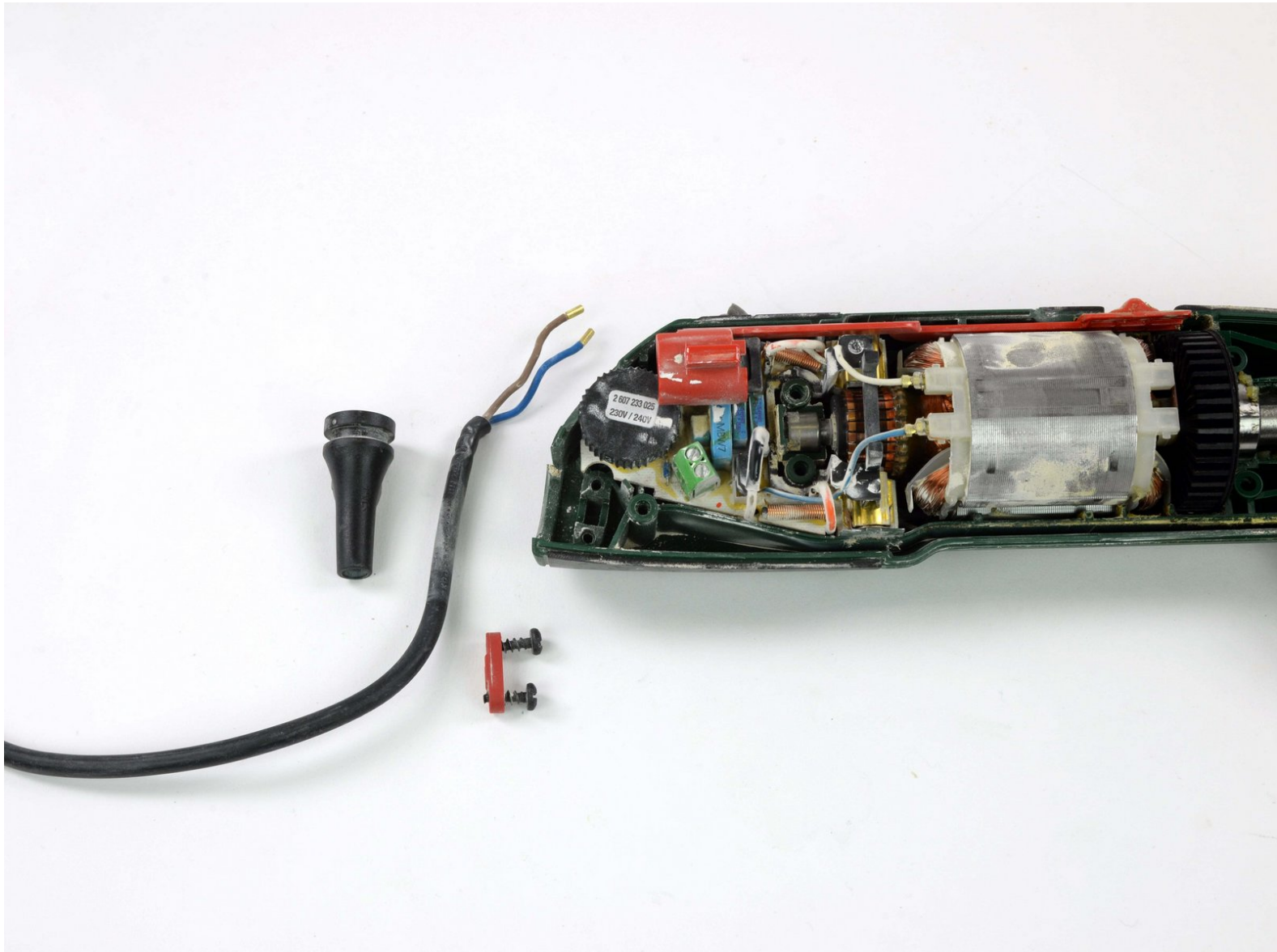




# Bosch PMF 180 E power cord / plug replacement

Your plug is damaged on your Bosch PMF 180 E? With this guide, you can exchange it!

Written By: Sandro Torchella



# INTRODUCTION

Your plug is damaged on your Bosch PMF 180 E? With this guide, you can exchange it!



## TOOLS:

- [T20 Torx Screwdriver](#) (1)
- [Flathead 3 Screwdriver](#) (1)
- [Toothbrush](#) (1)
- [Jimmy](#) (1)
- [Tweezers](#) (1)



## PARTS:

- [New Item](#) (1)

## Step 1 — Power cord / plug



**⚠ Absolutely disconnect the device as the first of the power (;-). Safety first!**

- i** If necessary, just a little bit of external cleaning so that when opening no additional dirt into the housing interior. for example with the [fine brush](#) but it is also an old toothbrush or a bristle brush, etc.
- ★** Very useful: An exploded view with spare part designation at the end of the description.

## Step 2



- Loosen 9 screws (combination screw T20 / slot # 5)
- ⓘ Tool: T20 / TR20 which u.a. included [here](#). Or with a flat-head screwdriver # 5. I recommend a T20 / TR20 because it handles better without damaging the screws.

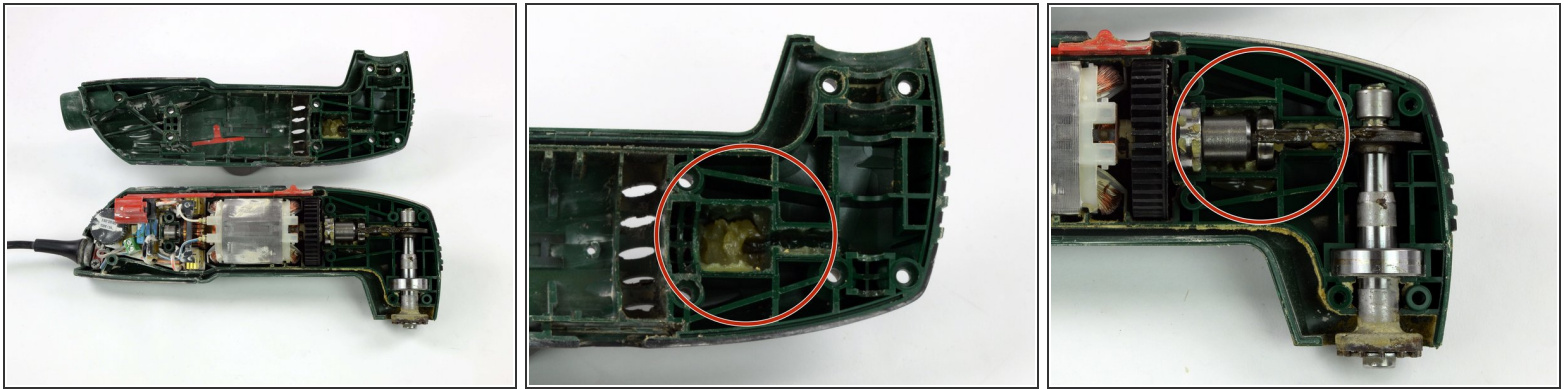
## Step 3



- With a flat object, the housing can now be easily opened along the seam. For example, with Jimmy, which is shown here. It also works with a flat knife or a thin Japan spatula.
- ⓘ If the unit is heavily used / dirty, simply pry slightly at several points along the seam until the case opens without force.

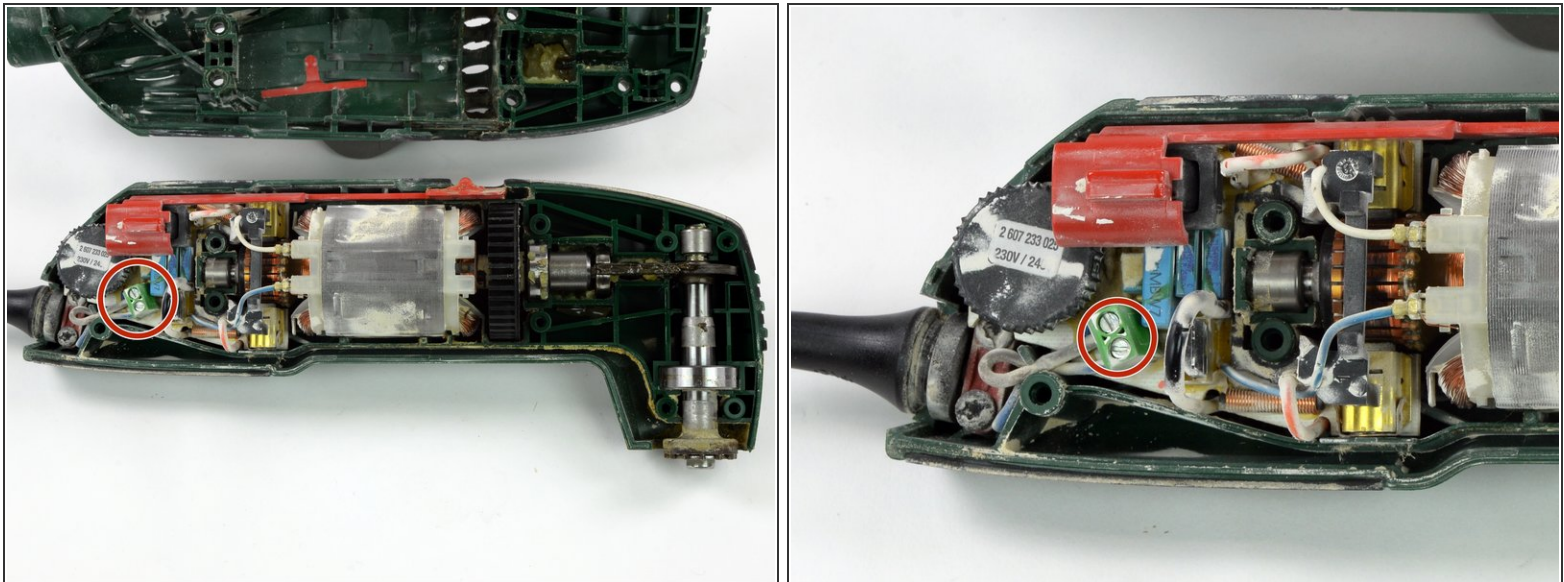


## Step 4



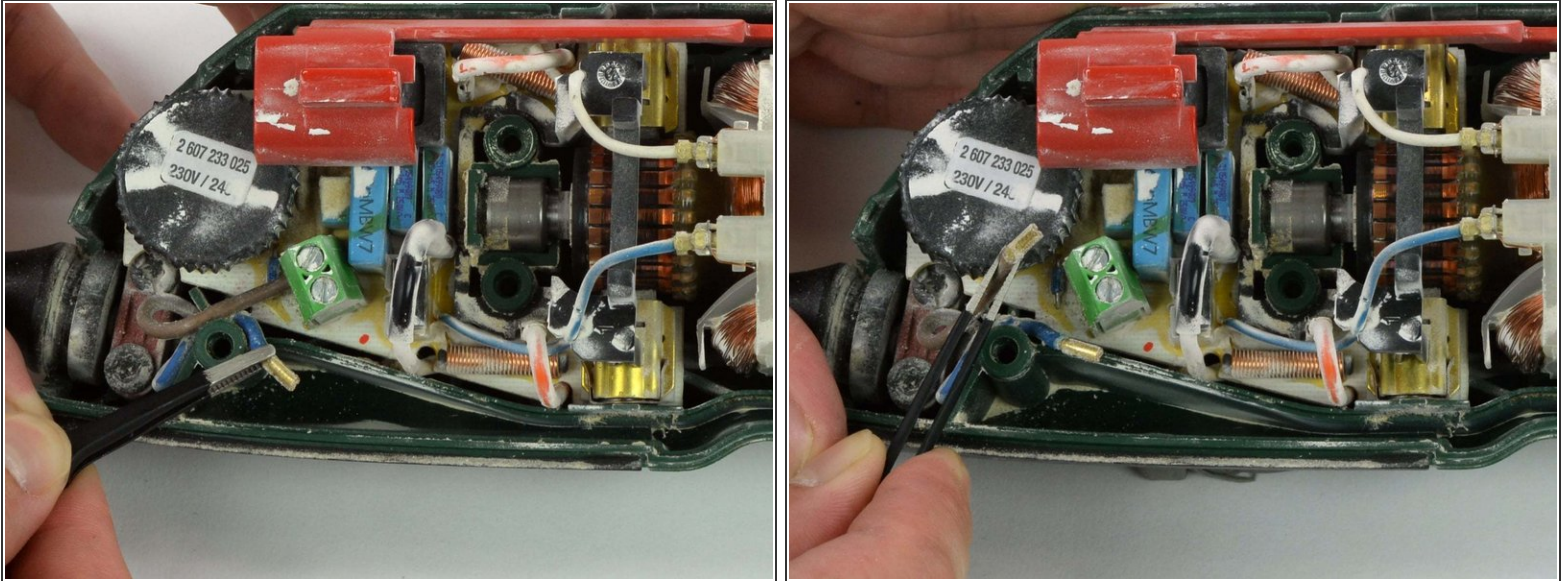
- The housing is now open and further steps can be taken.
- If necessary can now be cleaned. (in this picture you can see that it is obviously necessary)
- Do not remove the grease! The drive needs that. Of course, it can also be replaced by a new one.

## Step 5



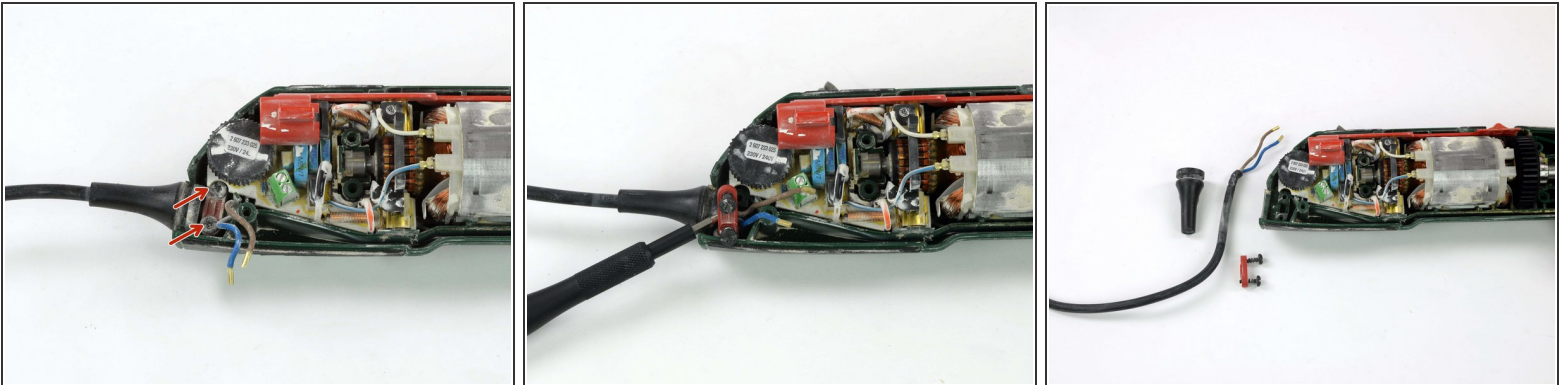
- Now first loosen the two slotted screws # 3 so that the wires can be pulled out of the clamp.

## Step 6



- Pull the wires out of the holder with a gripping tool. For example, with a pair of [tweezers](#) or a small, flat pair of pliers.

## Step 7



- Now loosen the two screws (T20 / slot # 5) of the cable lock and remove the clamp.
- The cable can now be pulled out of the grommet and replaced

Repeat the steps in order to reassemble your device.