



# Bosch PS21 Gearbox (Clutch) Replacement

Replace the gearbox (clutch) in your Bosch PS21.

Written By: Getsemani Gonzalez



## INTRODUCTION

Use this guide to replace the gearbox in the Bosch PS21. If the clutch is not working, the gearbox will need to be replaced. Be sure to remove the battery before disassembling the device.


---

### TOOLS:

- [Tweezers](#) (1)
  - [Metal Spudger](#) (1)
  - [T8 Torx Screwdriver](#) (1)
-

## Step 1 — Battery



 Remove the battery prior to working on the drill

- Pinch the two release tabs on the sides of the battery, and slide the battery out.

## Step 2 — Gearbox



- After successfully removing the 12.0 V battery pack and placing it in a safe place away from the working area, set the Bosch PS21 on a level, clean surface with the information label and screw cavities facing upward.

### Step 3



- Locate the clip that binds the two halves of the outer casing on the rear edge of the battery shaft. You will need the angled tweezers for the removal of the clip.
- Place the tweezers in the groove on the inside of the clip. The clip is firmly placed, so this will take some effort. Use your other hand to brace the drill and pull downward until the clip comes loose.

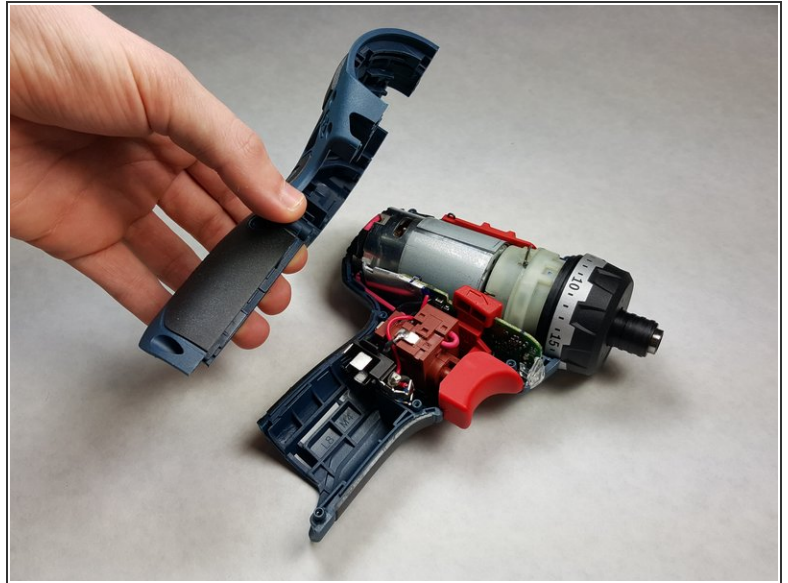
### Step 4



- Locate the eight 5.5 mm screws on the upwards facing side of the drill.
- Using the T8 Torx screwdriver, carefully remove each screw and place them together in a safe place.

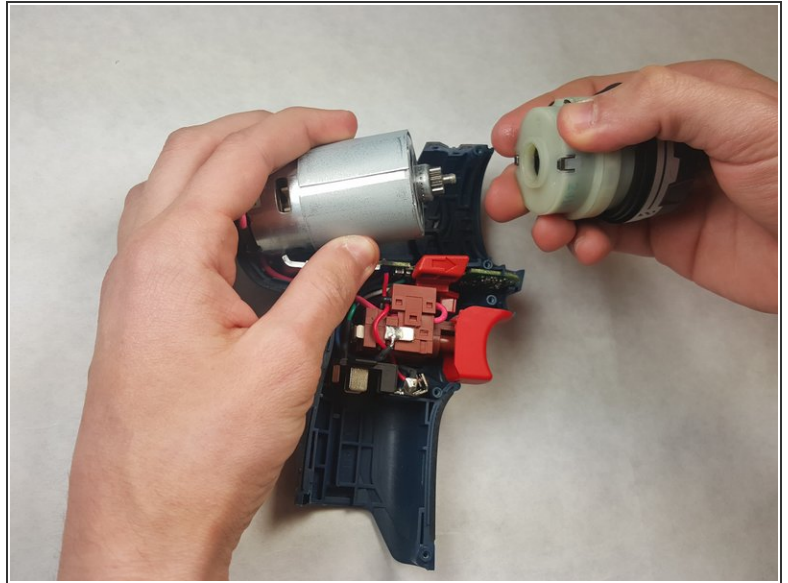
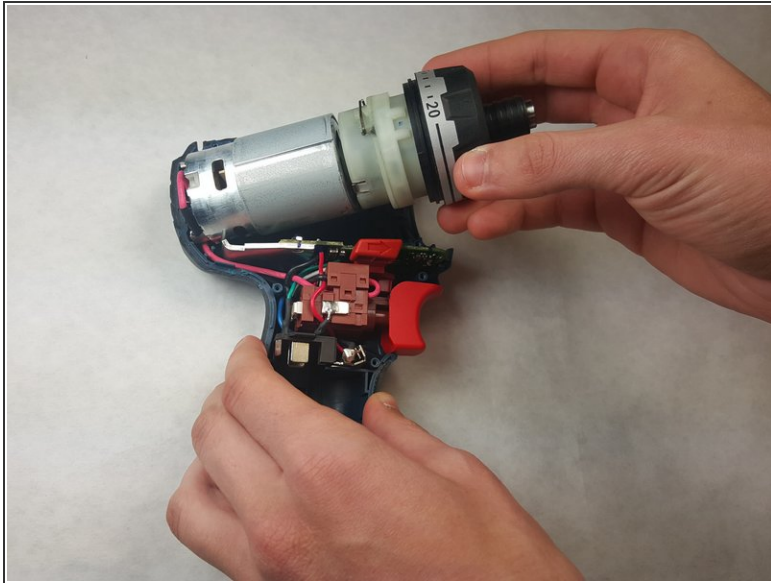


## Step 5



- Starting at the rear of the drill, use a metal spudger to carefully pry apart the outer case.
- Remove the upper portion of the outer case.

## Step 6



- Firmly gripping the casing with one hand, take the other hand and dislodge the motor assembly from the casing.
- Carefully remove the gearbox from the motor assembly.

To reassemble your device, follow these instructions in reverse order.