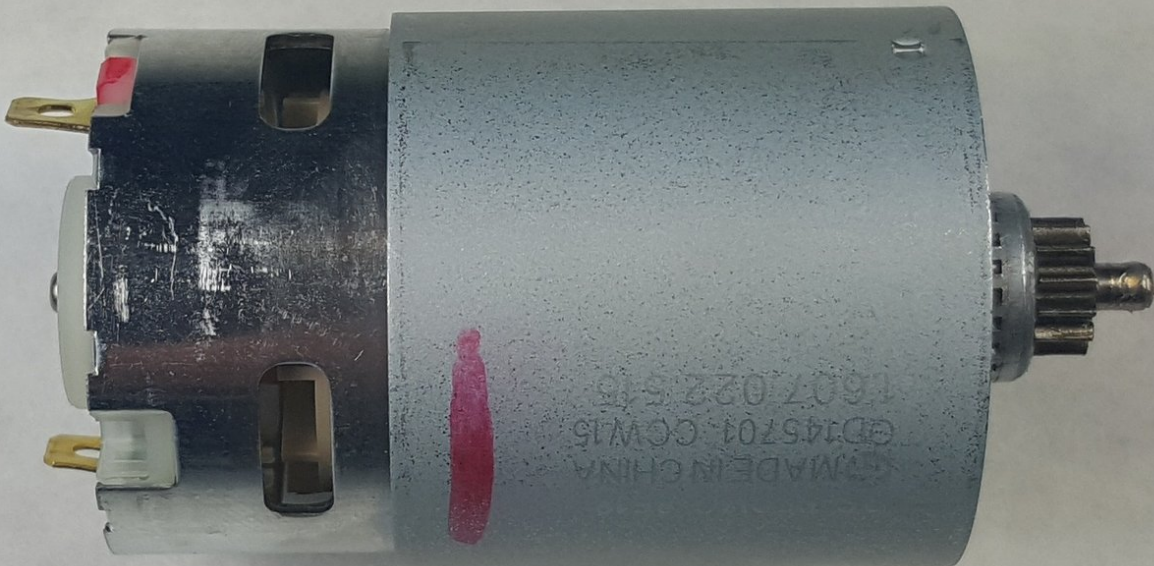




Bosch PS21 Motor Replacement

This guide will help you replace the motor in your Bosch PS21 Cordless Drill.

Written By: Daniel Sebastian



INTRODUCTION

If the motor becomes faulty, it can be replaced in a simple manner. Bosch offers a new motor to purchase for the replacement. When disassembling the drill, make sure to have flat, clean working surface. Carefully follow this guide to replace the faulty motor.




TOOLS:

- [iFixit Opening Picks set of 6](#) (1)
 - [64 Bit Driver Kit](#) (1)
 - [T8 Torx Screwdriver](#) (1)
 - [Small Needle Nose Pliers](#) (1)
 - [Metal Spudger](#) (1)
 - [Tweezers](#) (1)
 - [Slip Joint Pliers](#) (1)
-

Step 1 — Battery



 Remove the battery prior to working on the drill

- Pinch the two release tabs on the sides of the battery, and slide the battery out.

Step 2 — Motor



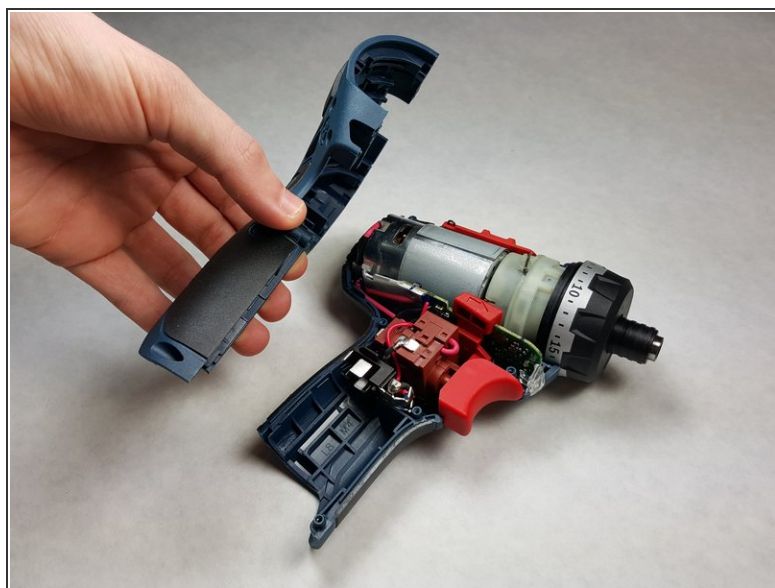
- After removing the battery pack, locate the clip that connects the two halves of the outer casing shown in the picture. Remove the clip using angled tweezers or a similar tool. Save the clip for reassembly.

Step 3



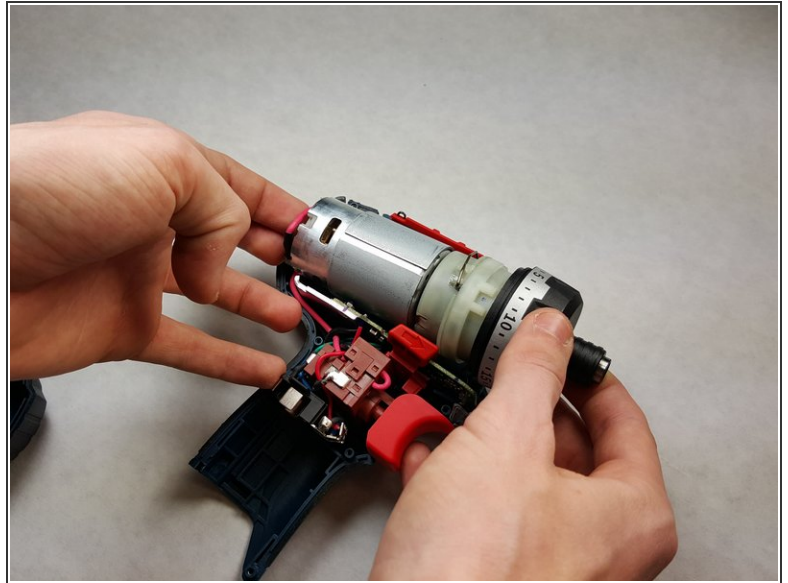
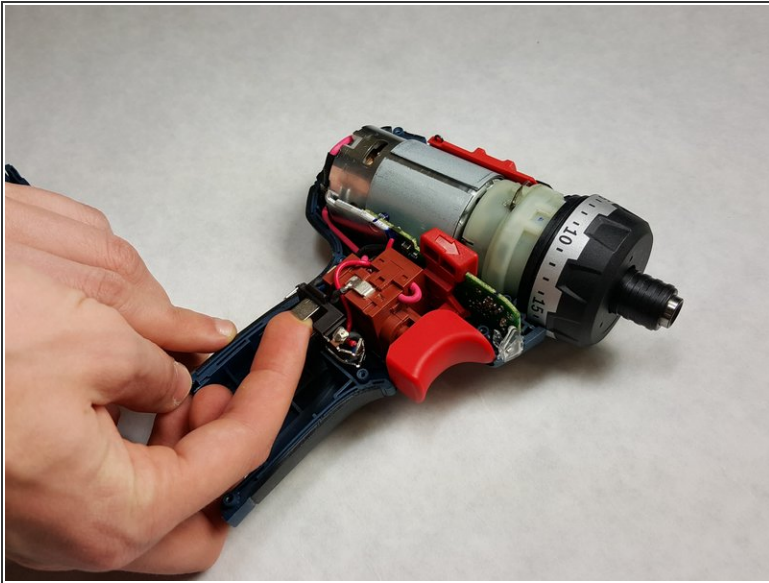
- Locate the eight 5.5 mm screws as shown in the picture.
- Remove each screw using a small Phillips head screw driver. Save all the screws for reassembly.


Step 4



- Starting at the rear of the drill, use a wedge to separate the two halves of the outer case at the parting line.

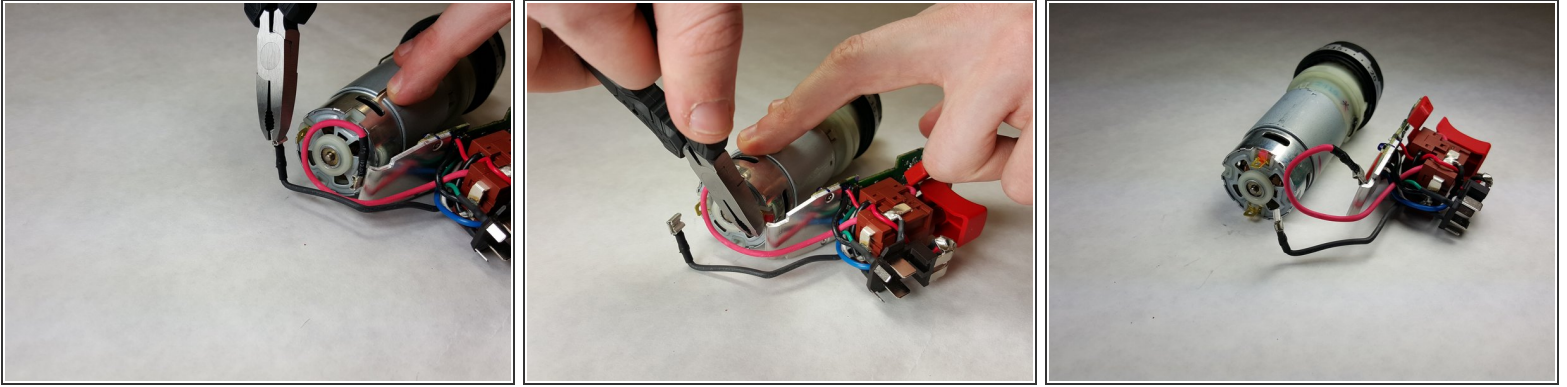
Step 5





 The motor and trigger assembly are connected by two wires. Do not pull or put tension on these wires.

- Lift up the metal tab as shown in the first picture to free the trigger assembly.
- Gently dislodge the motor and trigger assembly from the drill case. Remove the components as one piece, shown in the second picture.

Step 6



 Be sure to not grip the pliers too firmly, as it could cause damage to the wire connectors.

- Firmly secure the motor assembly in place. Using a set of pliers, carefully pull the black wire connector away from the motor. Repeat this action with the red wire connector.
-  The wire connections on the motor are color coded, matching the color wire that connects there.

Step 7



- Once the wires have been disconnected, separate the trigger mechanism from the motor assembly.
- Place your hands on each end of mechanism and carefully pull apart the assembly in order to separate the gearbox from the motor.

To reassemble your device, follow these instructions in reverse order.