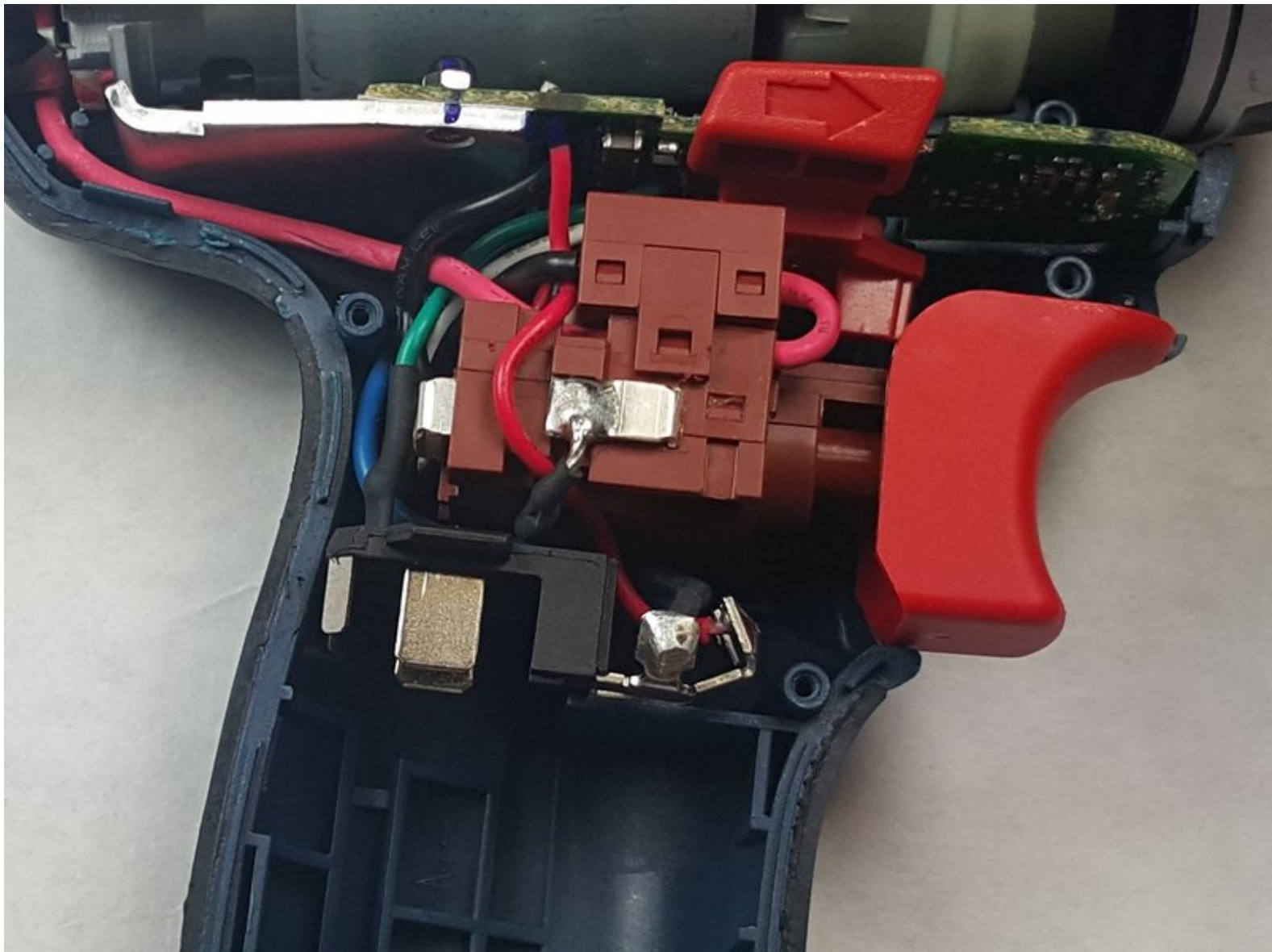




Bosch PS21 Trigger Replacement

This guide demonstrates how to replace the trigger assembly.

Written By: Getsemani Gonzalez



INTRODUCTION

The trigger replacement is fairly simple but it might require some effort.

It is necessary that the battery is removed prior to starting with this project to ensure that no injuries will happen when disconnecting the trigger from the motor.




TOOLS:

- [T8 Torx Screwdriver](#) (1)
 - [Small Needle Nose Pliers](#) (1)
 - [Tweezers](#) (1)
 - [Metal Spudger](#) (1)
-

Step 1 — Battery




 Remove the battery prior to working on the drill

- Pinch the two release tabs on the sides of the battery, and slide the battery out.

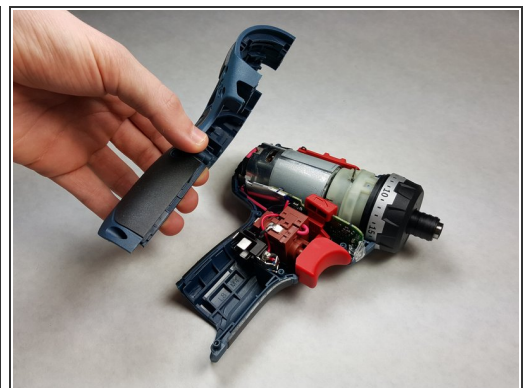
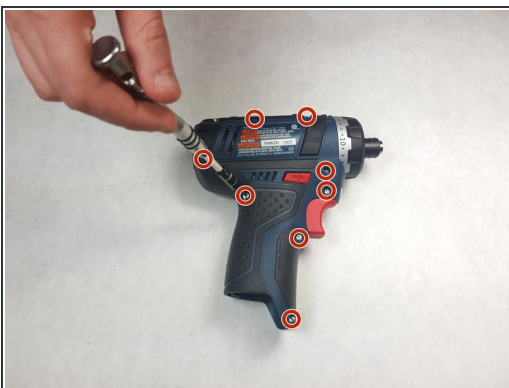
Step 2 — Trigger



- Locate the clip that connects the two halves of the outer casing on the rear edge of the battery shaft. *Use the angled tweezers to remove the clip.

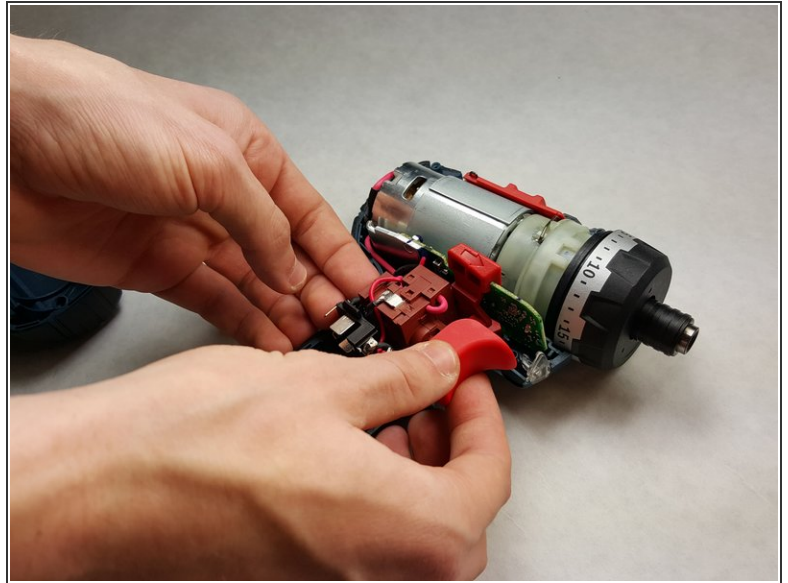
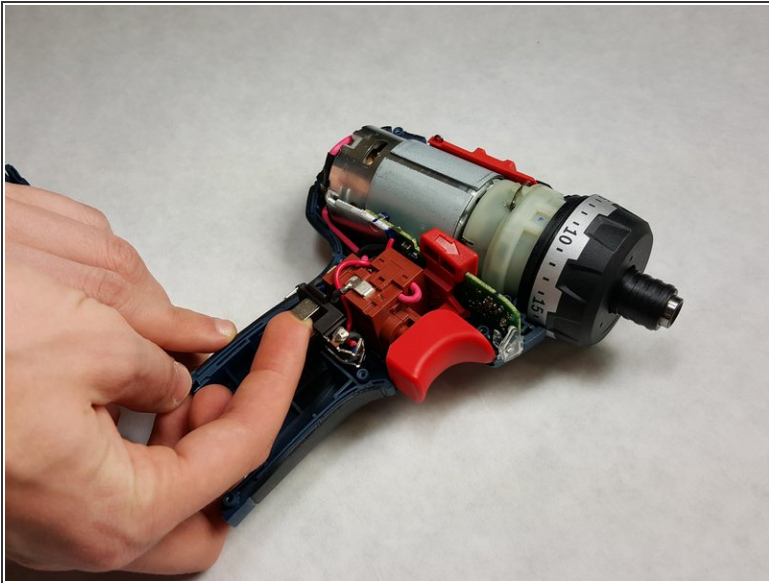
 Place the tweezers in the groove on the inside of the clip. Use your other hand to firmly brace the drill and pull towards your body until the clip comes loose.

Step 3



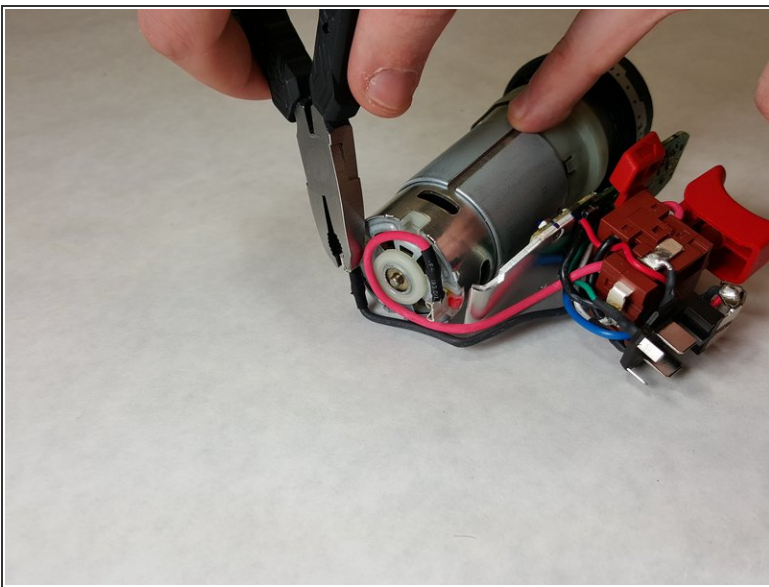
- Locate the eight 5.5 mm screws located on the upwards facing side of the drill.
- Remove each screw using the T8 Torx driver, set aside in a safe place.
- After removing all the screws, use a small or medium metal spudger remove the casing to expose the motor and trigger.

Step 4




- Place a finger under the metal tab seen here and lift gently up to free the trigger mechanism.
- Carefully grab the trigger assembly and gently pull upwards without taking too much out of place.

Step 5



- Gently disconnect the two wires connecting the motor to the trigger utilizing a pair of pliers.

 The trigger assembly is Part #:1607233422

To reassemble your device, follow these instructions in reverse order.