



# Bosch Vision 500 Washing Machine Hot Water Inlet Valve Assembly Replacement

This guide will instruct people on how to replace the hot water inlet valve assembly of a Bosch Vision 500 Washing Machine.

Written By: Klavey Jardine



## INTRODUCTION

This guide documents the process of replacing a hot water inlet valve assembly of a Bosch Vision 500 washing machine. Some very common sources of leaks inside the washing machine are water inlet valves and water lines leaking. Recently, my hot water inlet valve broke and was leaking inside the housing of the washing machine. This guide will show you how to replace the water inlet valve.



### TOOLS:

- [Large Needle Nose Pliers](#) (1)
- [T20 Torx Screwdriver](#) (1)




### PARTS:

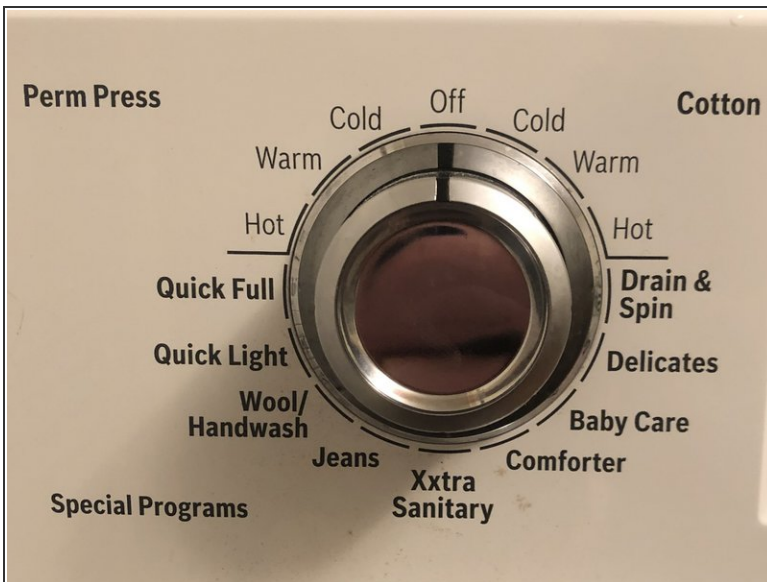
- [Genuine OEM Bosch Washing Machine Hot Water Valve 422245](#) (1)

## Step 1 — Hot Water Inlet Valve Assembly



 Wear work gloves for protection.  
There are sharp edges and corners inside the washer.

## Step 2



- Make sure the washer is turned off and unplugged.



### Step 3



- Turn off the hot water supply from the house.

### Step 4



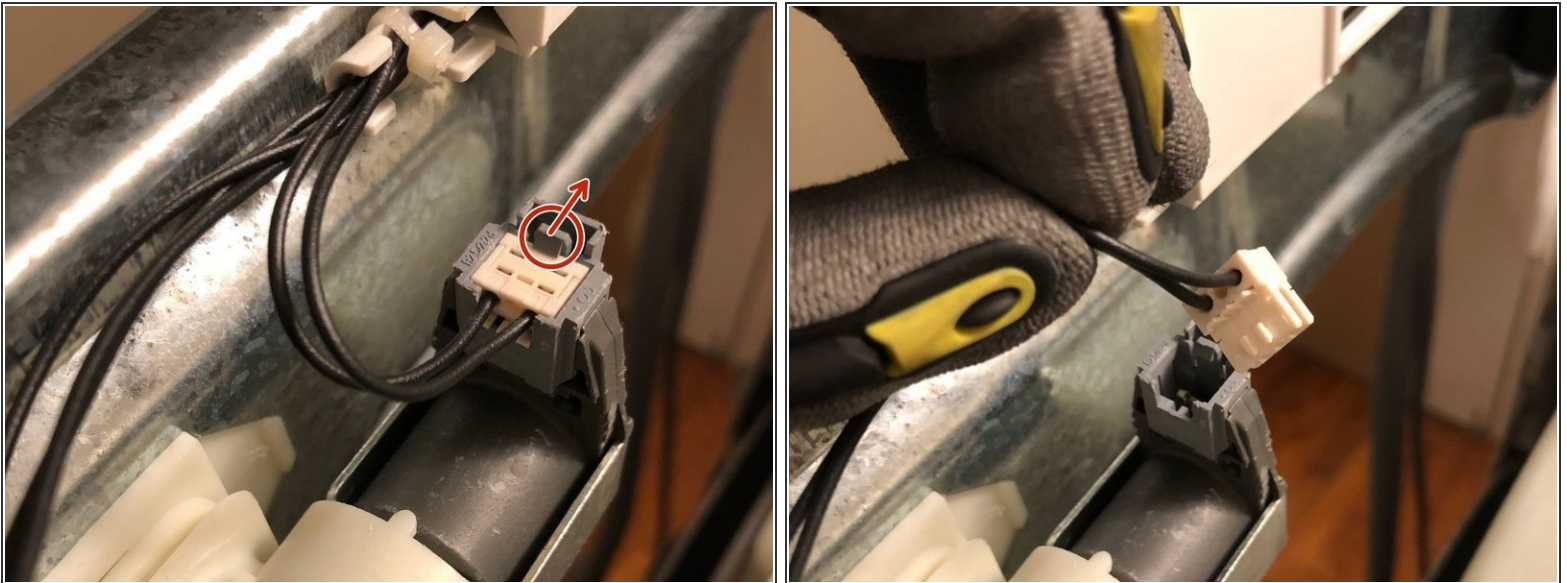
- Remove the hot water supply hose from the rear of the washer by rotating the hose cap to the left. Drain the hose into a bucket or sink.

## Step 5



- Use a screwdriver or drill with a T-20 star-drive bit to remove the two screws from the rear that keep the top panel in place. The top panel is removed by sliding it off.
- The location of the hot water inlet valve in the washer is circled in the image.

## Step 6



- Remove the electrical wiring from the hot water inlet valve assembly.
- Push the plastic tab circled in the image to pull out the electrical wiring.



## Step 7



- Squeeze the hose clamp and slide it away from the hot water inlet valve to remove the water fill line from the valve.

## Step 8



- Push the plastic tab to pop the hot water inlet valve out of the rear panel of the washer.
- The plastic tab is circled in red in the image.

## Step 9



- Push the hot water inlet valve assembly through the rear panel to remove it.

To reassemble your device, follow these instructions in reverse order.