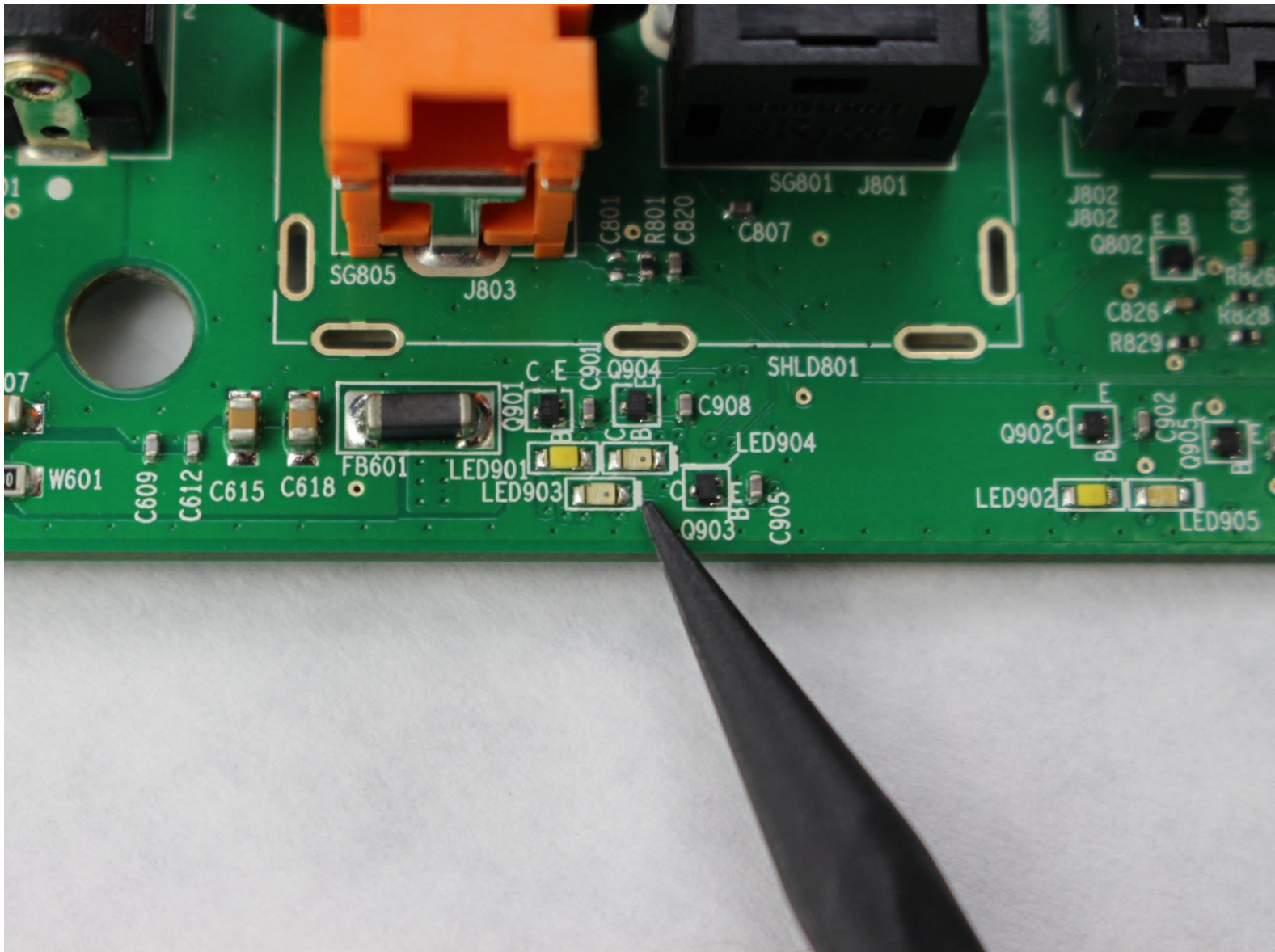


Written By: Emma



INTRODUCTION

This guide allows a user to replace a Bose Solo 5 Sound Bar indicator light. To complete this guide you will need a Phillips #2 screwdriver, a plastic opening tool (or wedge), and a spudger.



TOOLS:

- [iFixit Opening Tools](#) (1)
 - [Spudger](#) (1)
 - [Phillips #2 Screwdriver](#) (1)
-

Step 1 — Indicator Light



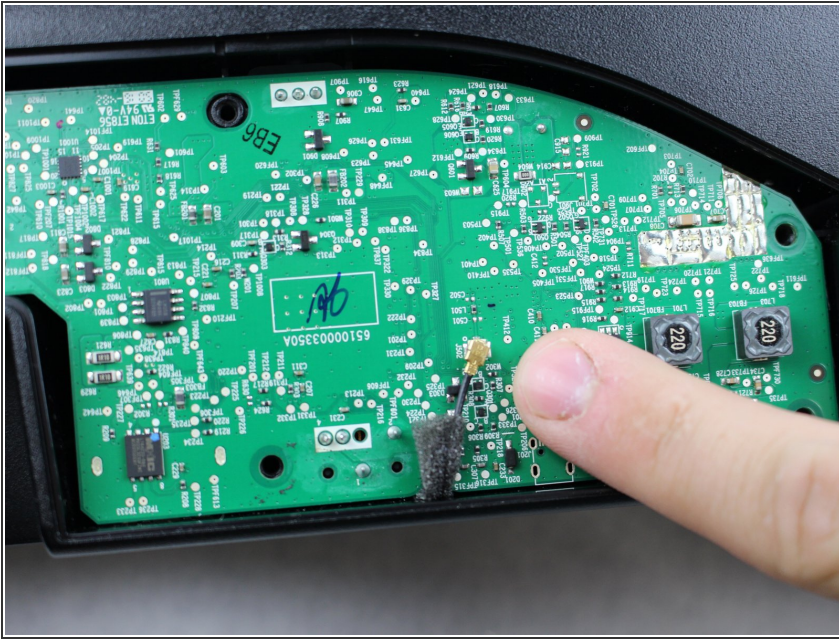
- Lay the Bose Solo 5 with the speakers facing away from you and the bottom side facing upward.

Step 2



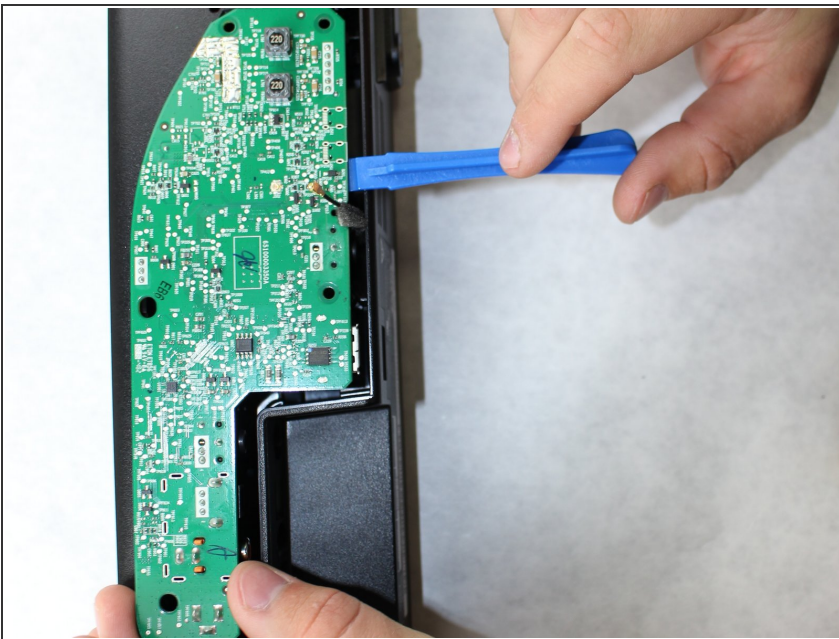
- Remove five 18.25mm screws with a Phillips #2 screw driver.

Step 3



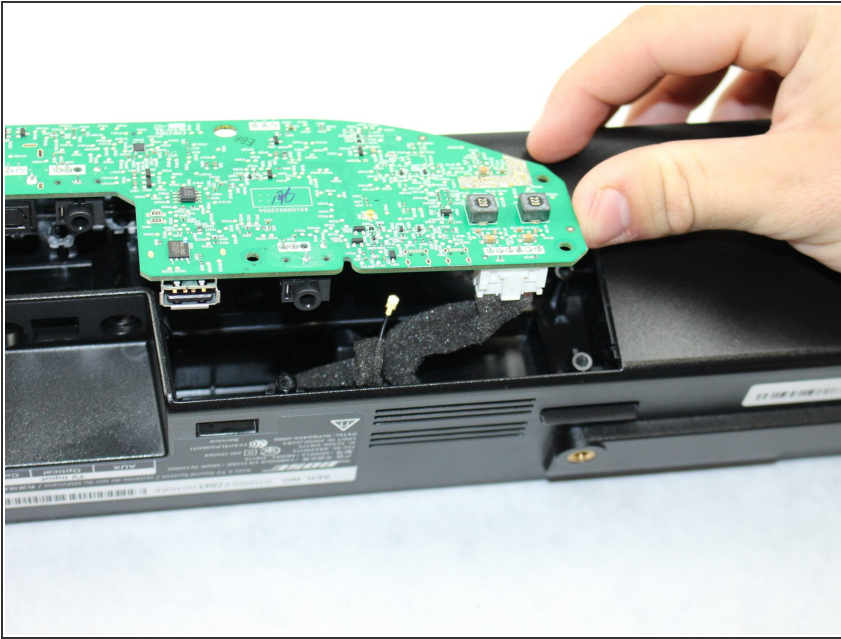
- Remove the gold plates and snap the connector from the circuit board by pulling it apart.

Step 4



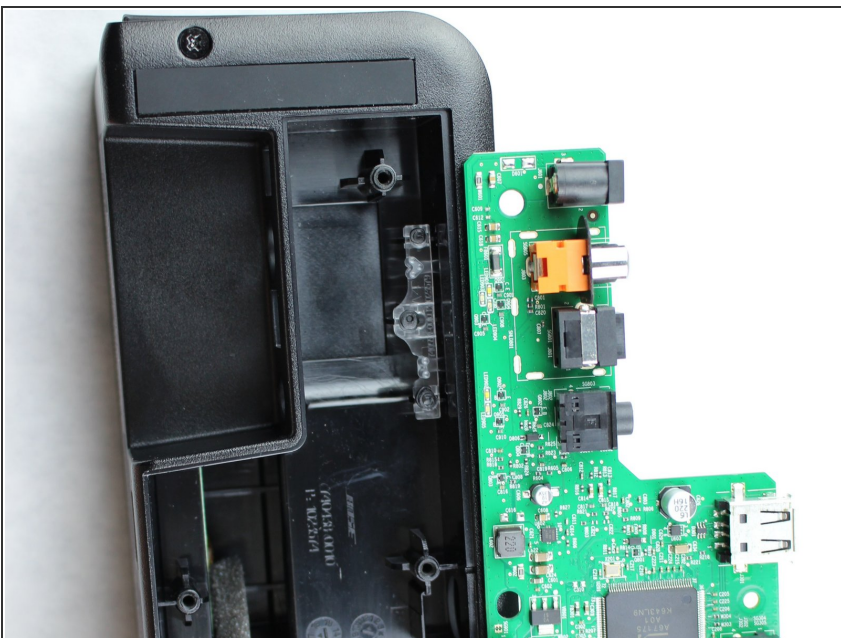
- Using the plastic opening tool, lift the circuit board up and remove it from the housing.

Step 5



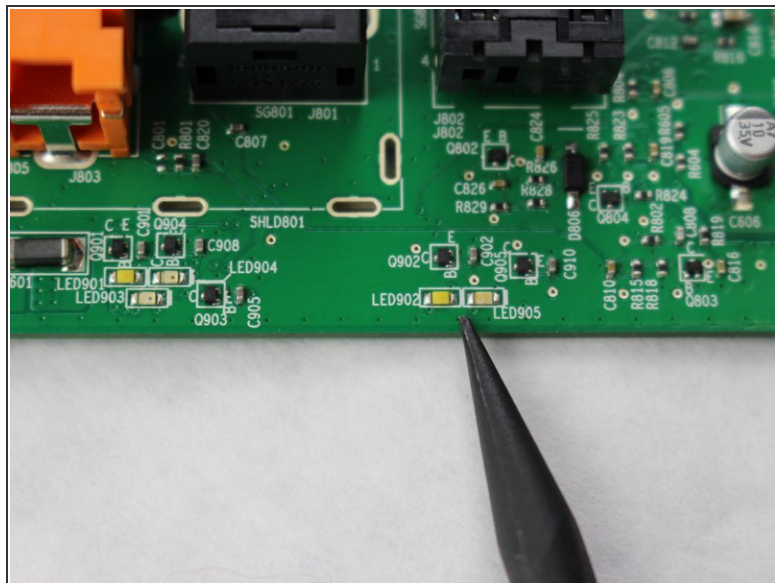
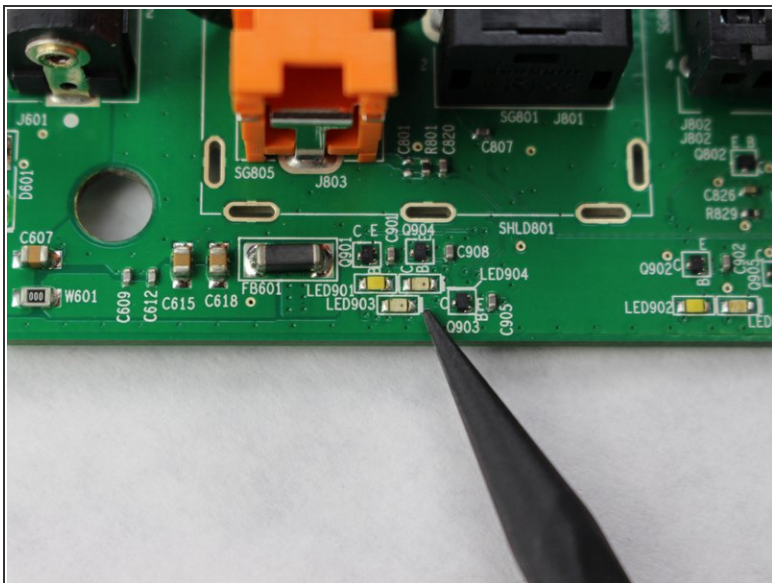
- Disconnect the cords running to the white connector by pulling upon the tab until it is disconnected completely.

Step 6



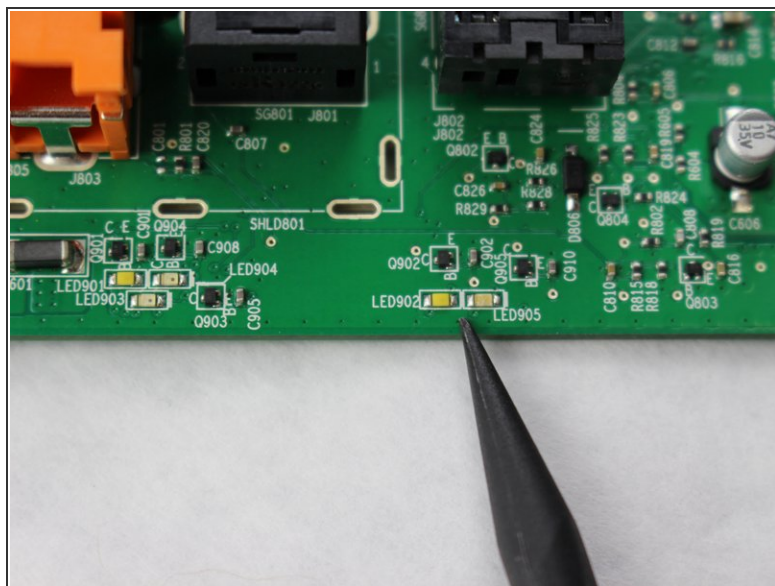
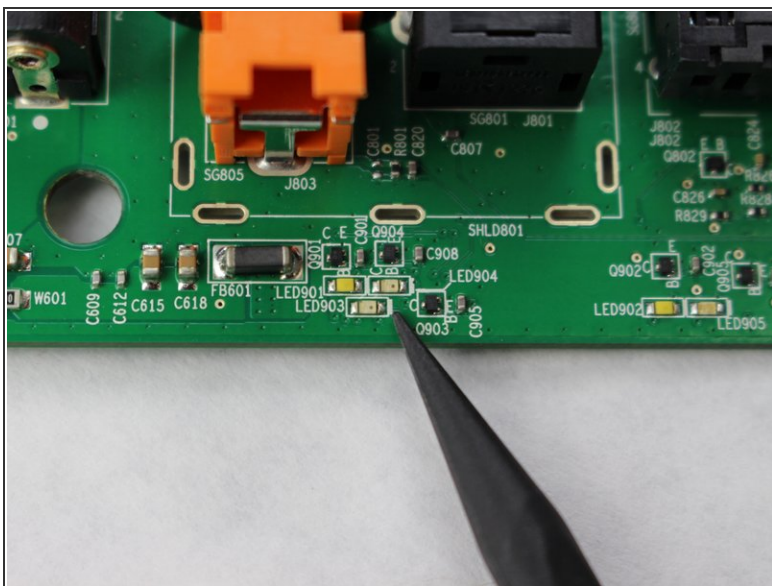
- Locate the two clear LED receptors and note that one has two prongs and the other has three prongs.

Step 7



- Locate on the back of the control panel where it states LED 902, 903, 904, and 905.

Step 8



- If there's debris, use the spudger and gently remove any debris.

To reassemble your device, follow these instructions in reverse order.