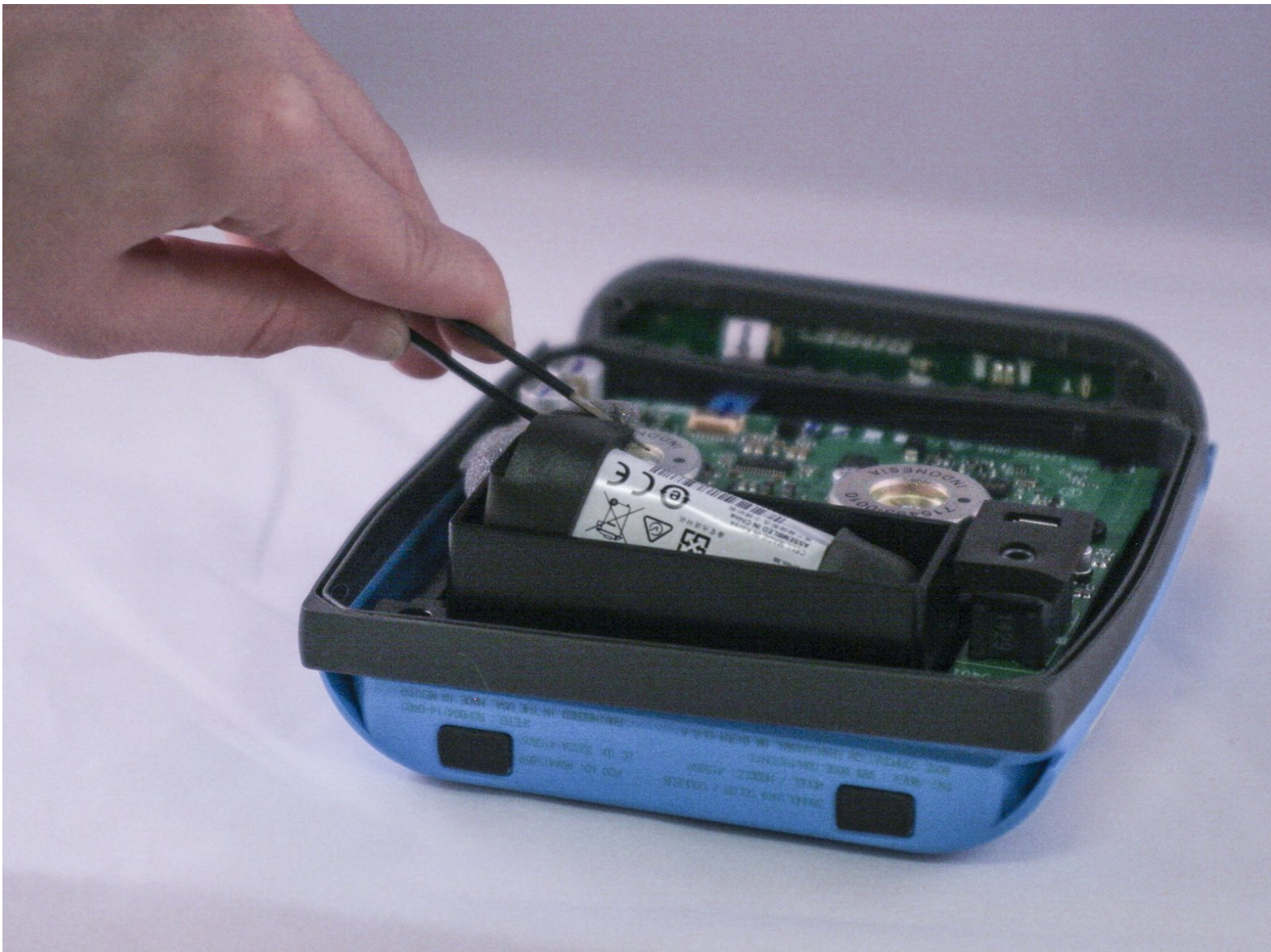




# Bose SoundLink Color Battery Replacement

This guide will demonstrate how to replace the battery in a Bose SoundLink Color.

Written By: Michael Thorn



---

## INTRODUCTION

The SoundLink Color's battery is known to lose charge after a few months of usage. This guide will show, step by step, how to take apart the device and replace the battery.

---

### TOOLS:

- [Metal Spudger](#) (1)
  - [Tamper Resistant TORX Plus TR Bit](#) (1)
  - [Phillips #0 Screwdriver](#) (1)
  - [iFixit Pro Tech Toolkit](#) (1)
  - [Soldering Iron](#) (1)
-

## Step 1 — Outer Casing



**i** Four round, plastic plugs are located on the back of the device.

- Using a metal spudger, carefully pry up the plastic covers.

**!** The covers are all glued on, so be careful not to scar the casing when prying them off. If possible, use a spudger or plastic opening tool to remove them.

## Step 2



- Remove the four 1.8 cm Torx Plus TR screws from the outer case.

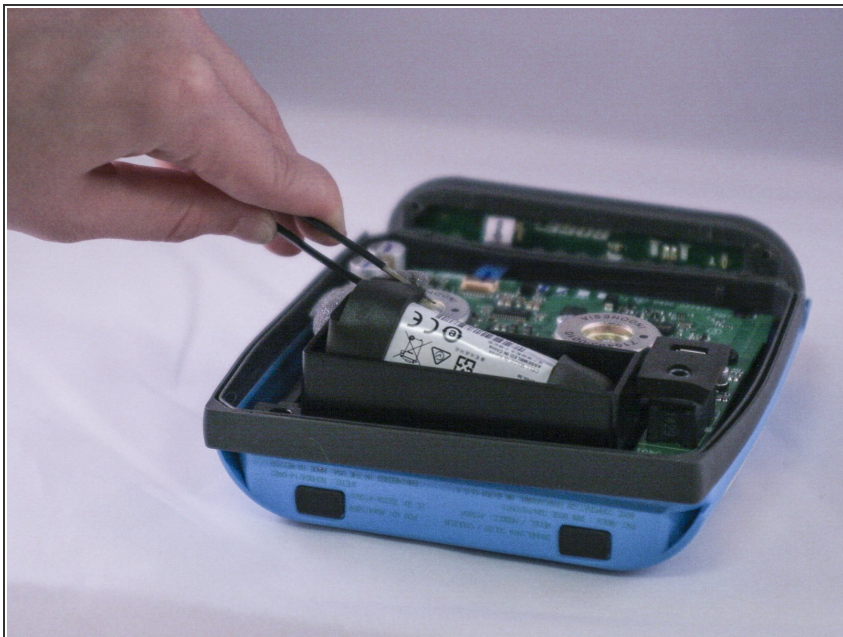


### Step 3



- Carefully open up the casing.
- ☑ The top button pad may need to be re-glued upon installing the new casing.

### Step 4 — Battery



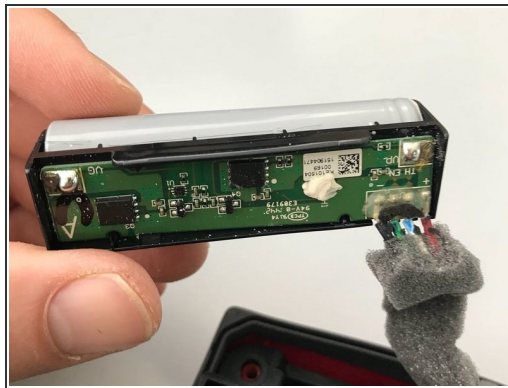
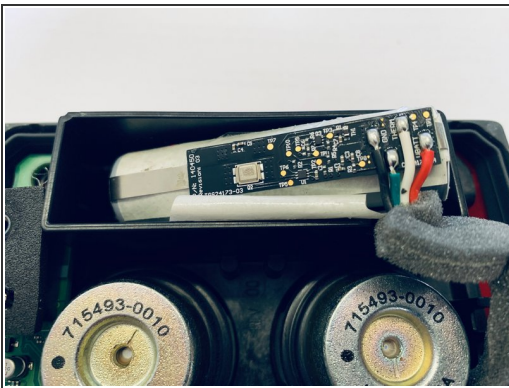
- Carefully remove the battery using a pair of tweezers.
- Lift the inner assembly from the outer casing.

## Step 5



- Partially cut the battery cover on the side paying attention to do not damage the circuit or the battery. Cut the cover just enough to remove it, try to not damage it too much as it is going to be reused.

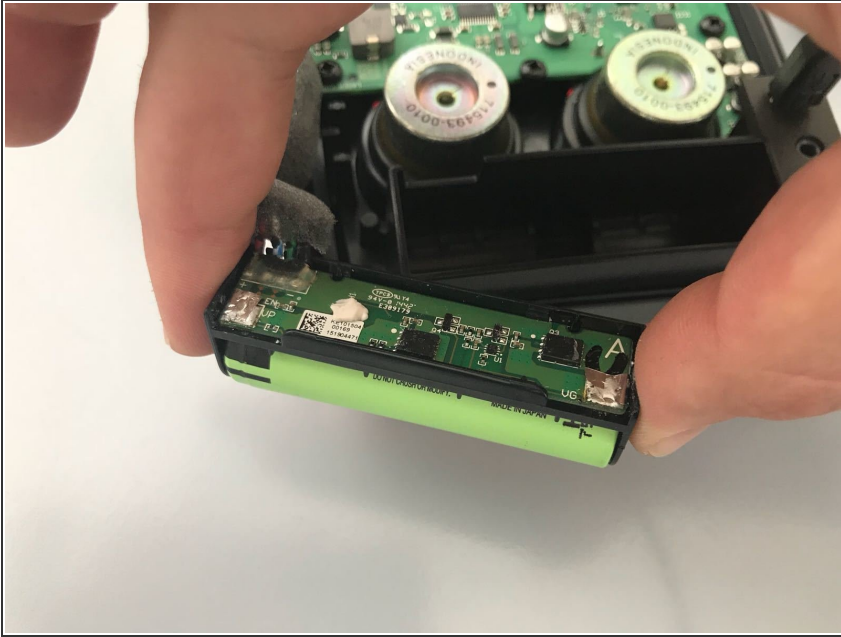
## Step 6



- Desolder the battery leads from the PCB and remove the battery.

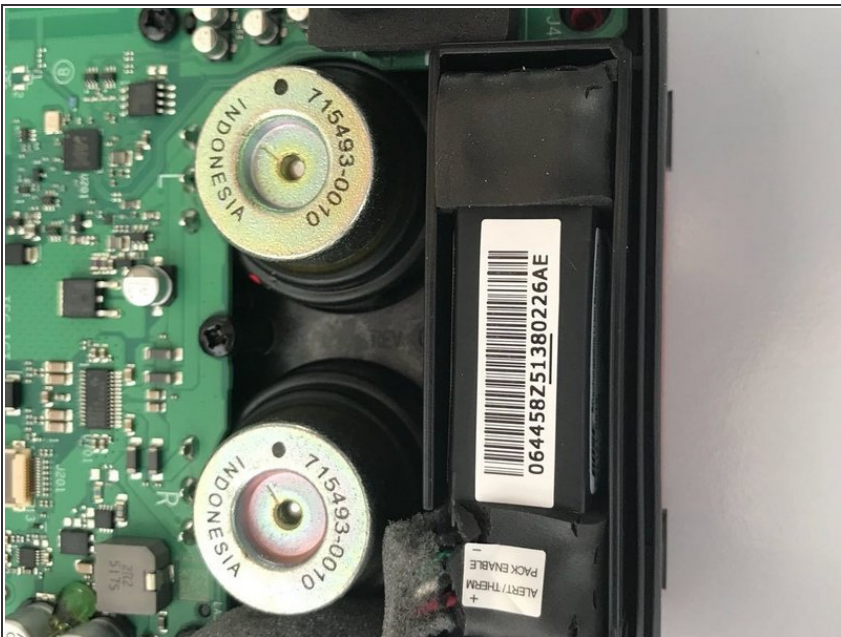


## Step 7



- I opted for a Panasonic NCR18650B, choose the version with solder tabs, otherwise it will be a pain to solder wires on the battery and you'll probably go out from the factory dimensions. [From the benchmarks it looks like a very good battery, time will tell.](#)
- Fit the new battery, cut the leads to the needed length, pay attention to polarity. You may need to enlarge leads holes in the plastic case with a cutter to let standard battery leads thru.

## Step 8



- Put back the sponge cover, it is necessary to avoid vibrations and to keep the thing firmly in place.

To reassemble your device, follow these instructions in reverse order.

This document was generated on 2019-09-17 07:19:12 AM (MST).

