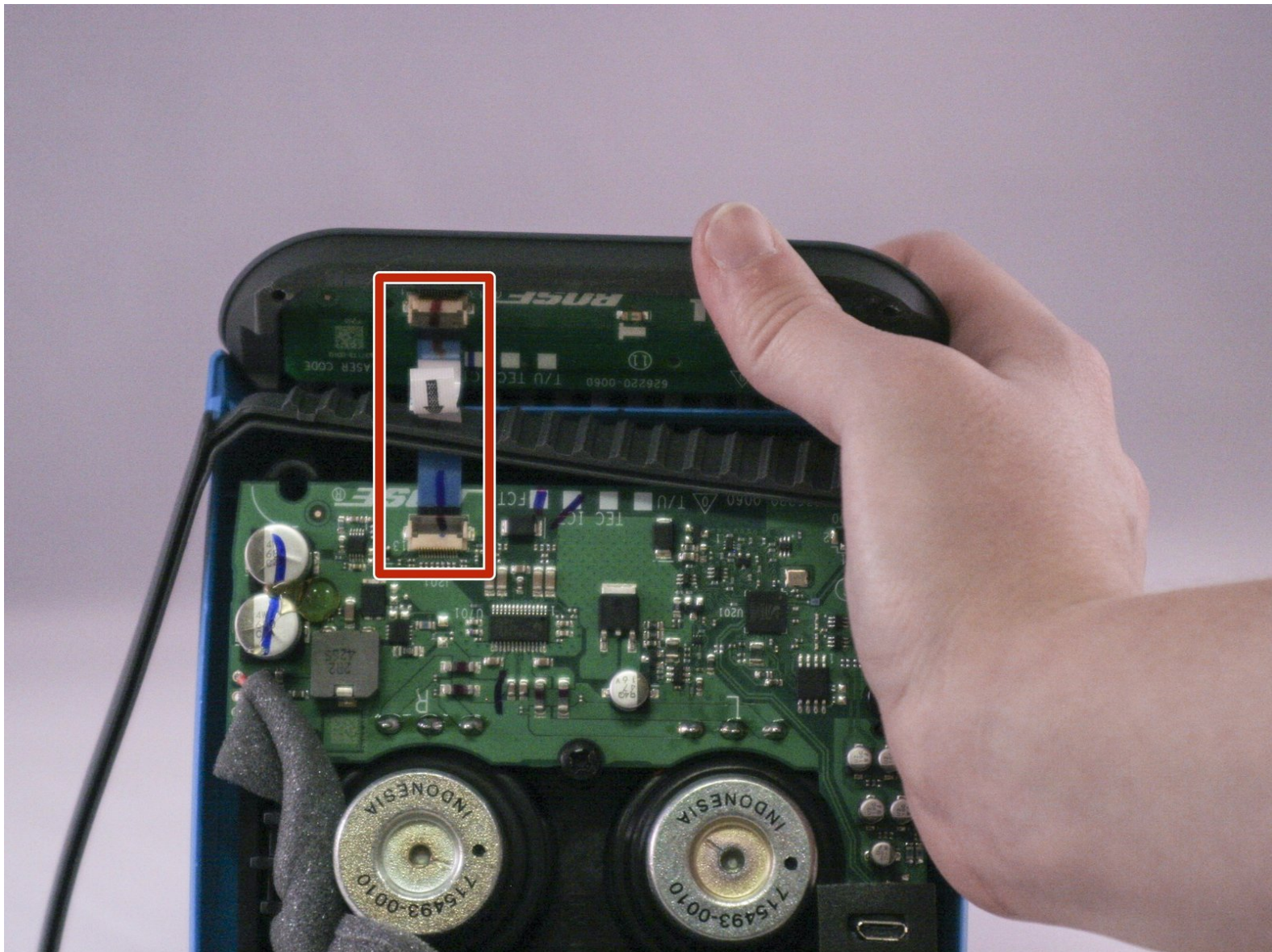




Bose SoundLink Color Speaker Replacement

Replace the speakers in your Bose SoundLink Color.

Written By: Brett Horstketter



INTRODUCTION

For this guide, an almost complete breakdown of the device will be required. This includes removal of the outer casing and the circuit-board, as well as a bit of **soldering**.

TOOLS:

- [Phillips #0 Screwdriver](#) (1)
 - [Metal Spudger](#) (1)
 - [iFixit Pro Tech Toolkit](#) (1)
 - [Tamper Resistant TORX Plus TR Bit](#) (1)
 - [Soldering Iron](#) (1)
 - [Spudger](#) (1)
-

Step 1 — Outer Casing



i Four round, plastic plugs are located on the back of the device.

- Using a metal spudger, carefully pry up the plastic covers.

! The covers are all glued on, so be careful not to scar the casing when prying them off. If possible, use a spudger or plastic opening tool to remove them.

Step 2



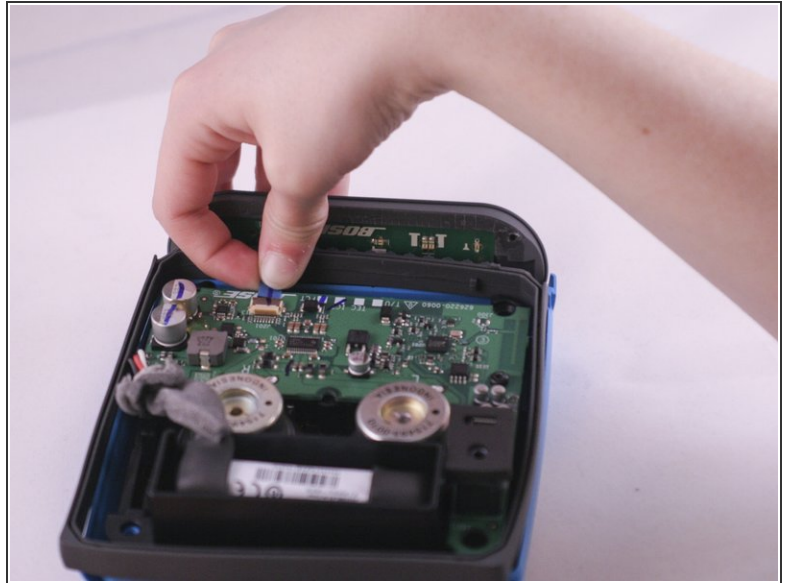
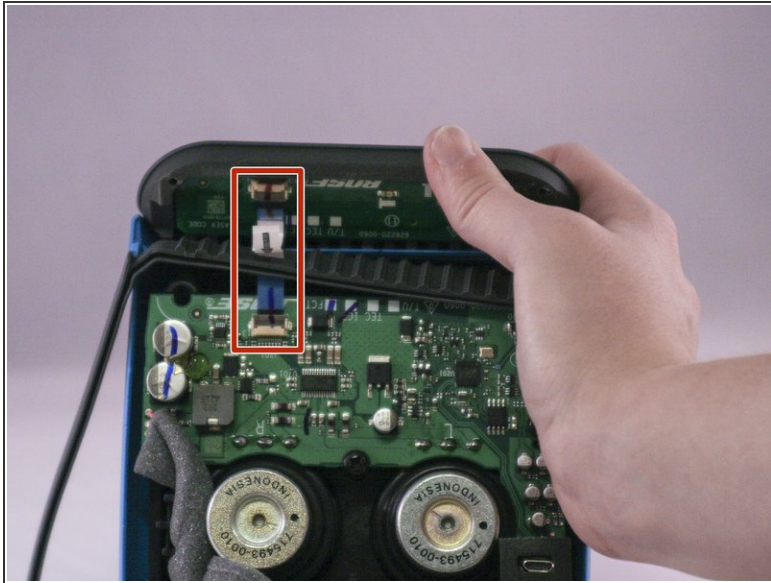
- Remove the four 1.8 cm Torx Plus TR screws from the outer case.

Step 3



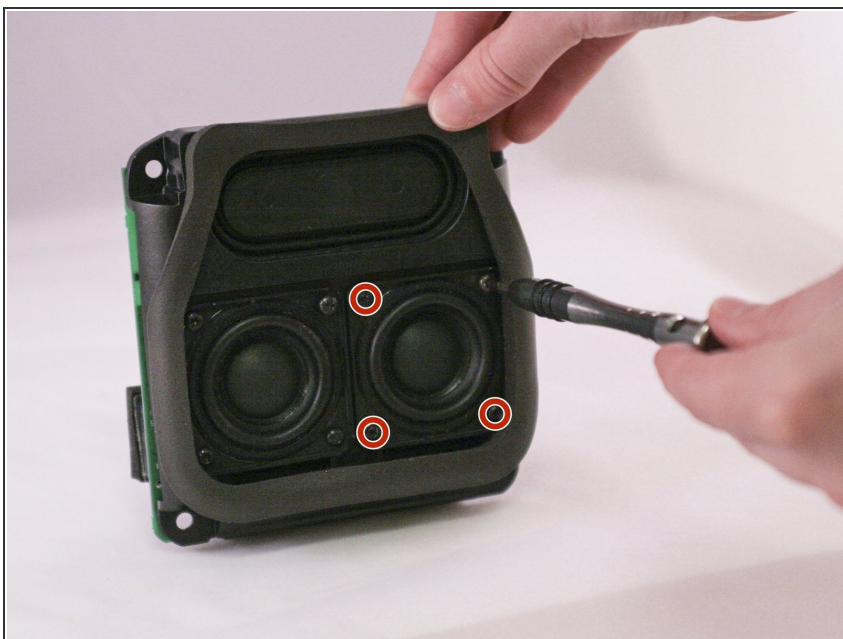
- Carefully open up the casing.
 - ☑ The top button pad may need to be re-glued upon installing the new casing.

Step 4 — Speaker



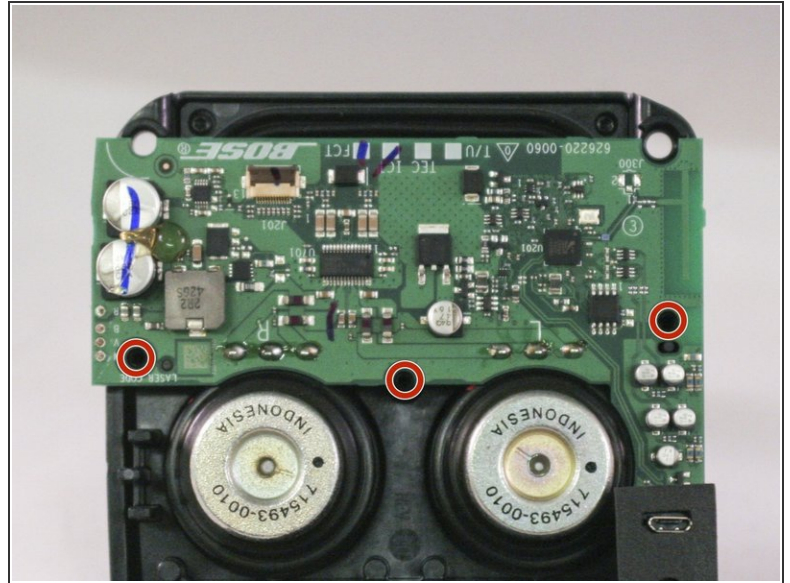
- Lift up the retaining flap on the button cable ZIF connector.
- Pull the button cable straight out of the connector.
- Remove the inner assembly.

Step 5



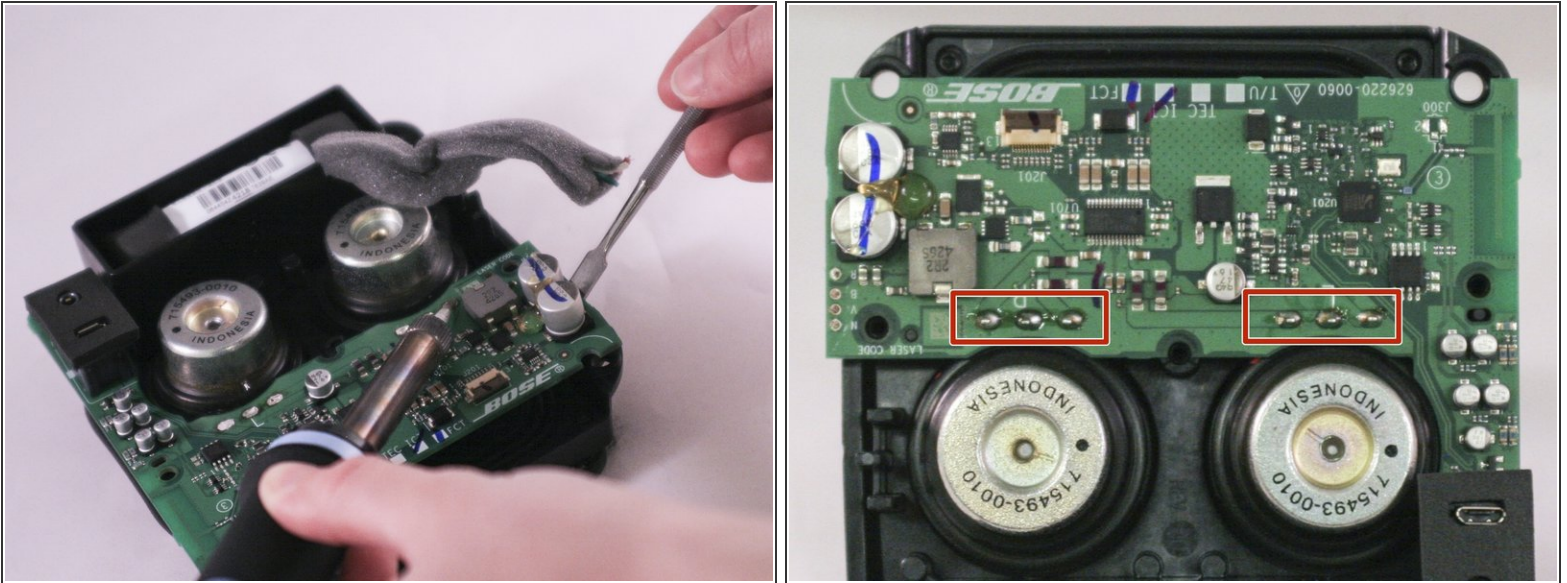
- ⓘ The speakers are on the front of the inner assembly.
- Using the Phillips head screwdriver, unscrew the four 1.3 cm screws holding the speaker that will be replaced.

Step 6



- ① Three screws hold the printed circuit board.
- Using the Phillips head screwdriver, unscrew the three 1.2 cm screws.

Step 7



- Desolder each the three pins connecting the speaker to the motherboard.
 - Carefully lift the motherboard with a spudger to ensure that each pin desolders.
- ⚠ Work carefully. Prying too hard may cause damage to the board.

Step 8



- Push the speaker through the front of the inner assembly.

To reassemble your device, follow these instructions in reverse order.