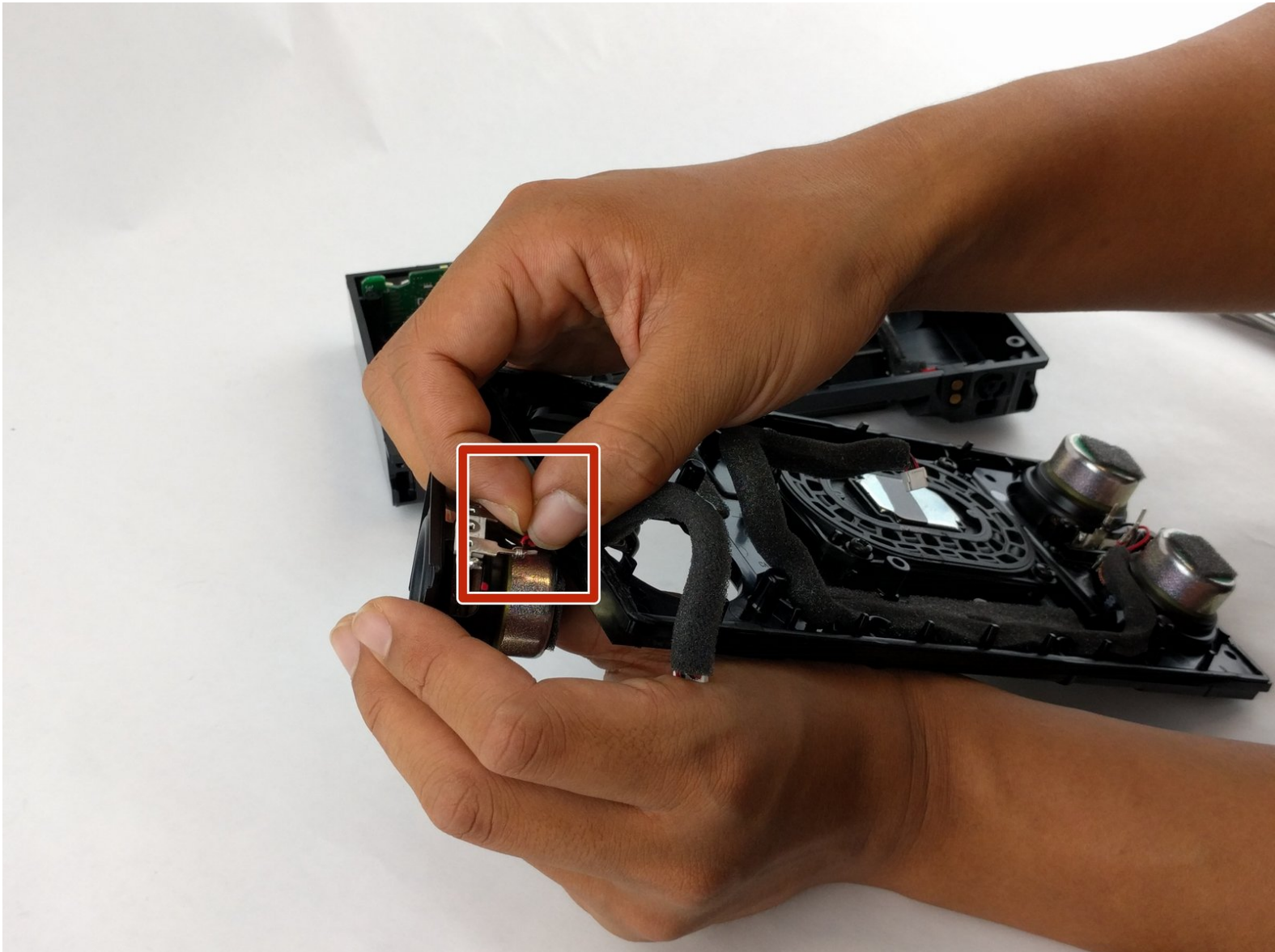




Bose SoundLink III Treble Speakers Replacement

In this guide you will learn how to replace the 4 treble speakers on your Bose SoundLink III.

Written By: Dakota Sanders



INTRODUCTION

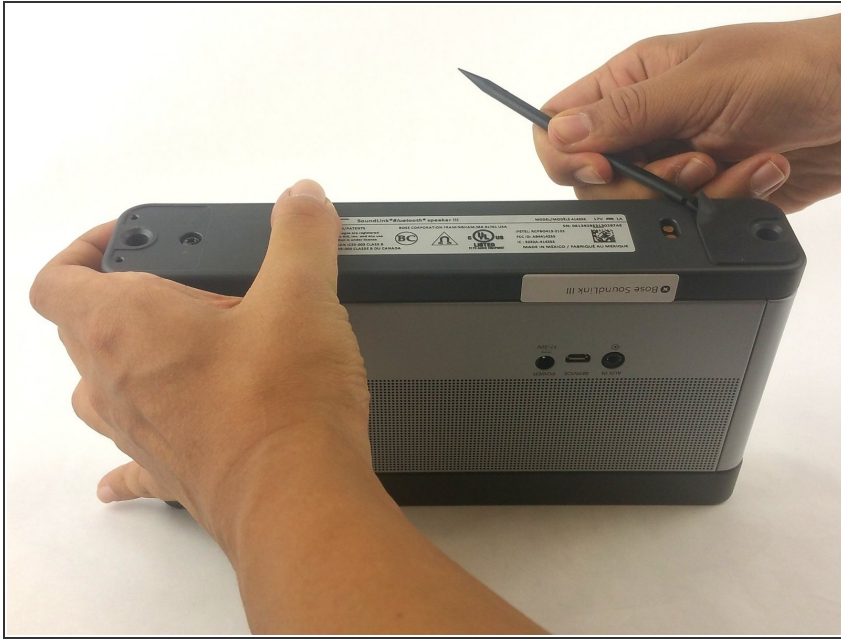
If you are experiencing any audio issues with the higher frequency sounds (the treble) such as distortion, muffling, quietness, or total absence of sound, you may need to replace one or more of your treble speakers.



TOOLS:

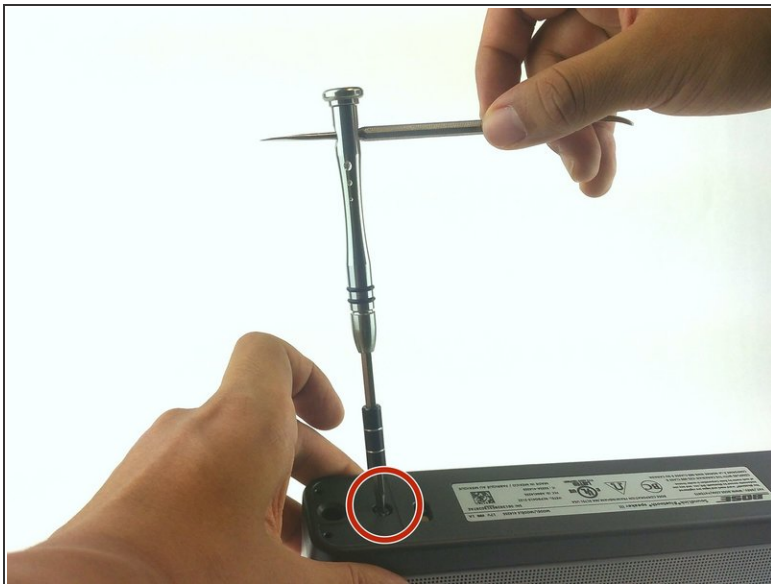
- [Spudger](#) (1)
 - [Metal Spudger](#) (1)
 - [T10 Torx Screwdriver](#) (1)
 - [Tweezers](#) (1)
 - [Phillips #2 Screwdriver](#) (1)
-

Step 1 — Battery



- Use a spudger to pry the rubber pads off of the bottom panel of the SoundLink.
- ★ The rubber pads should have enough adhesive to stick when you reassemble them at the end. If not, however, you may need your own adhesive.

Step 2



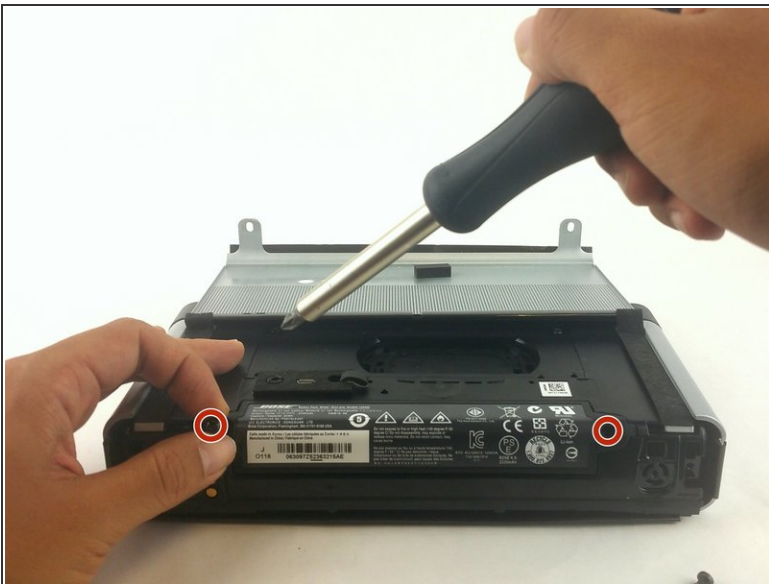
- Remove the two 12.5 mm screws using a Phillips #2 screwdriver.
 - ⓘ These screws may be difficult to remove. If necessary, use a lever for extra torque.
- Remove the bottom panel.

Step 3



- Flip the rear panel back to allow access to the SoundLink's battery.

Step 4



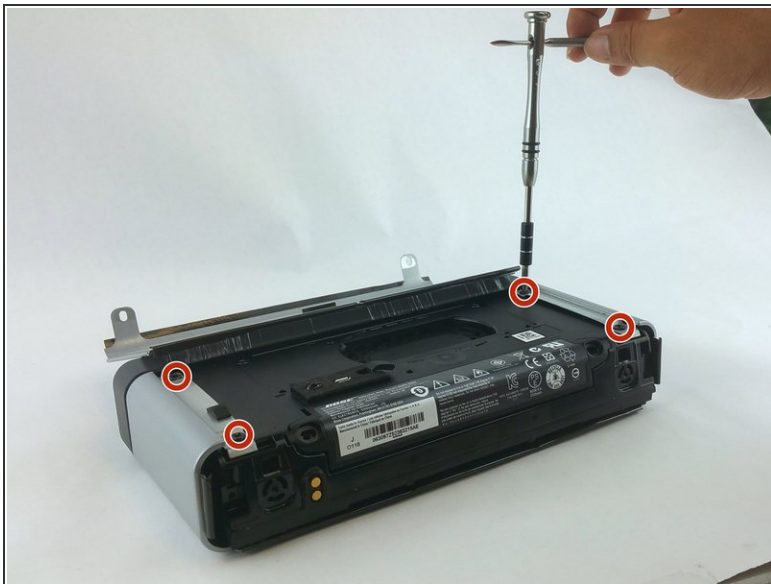
- Remove the two 12.5 mm Phillips #2 screws from the sides of the battery.

Step 5 — Motherboard



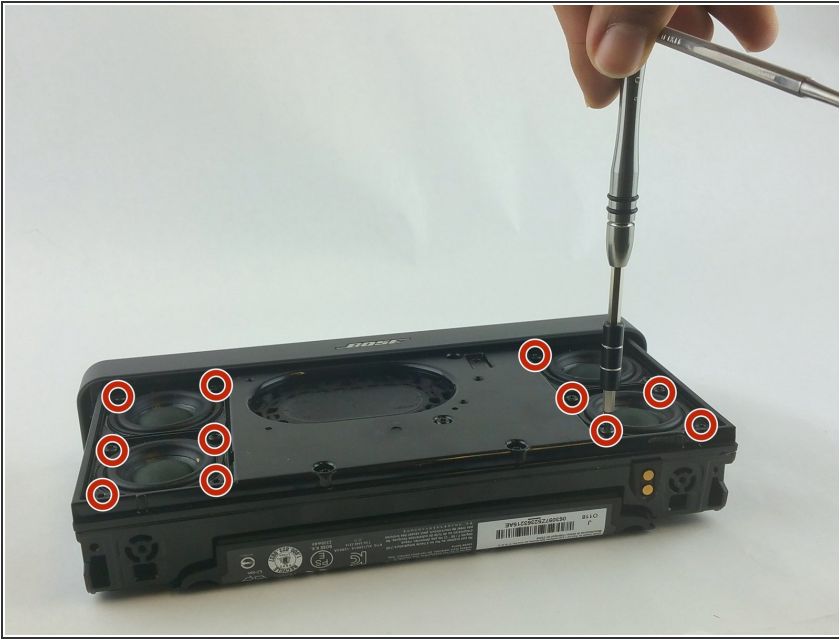
- Gently peel back the adhesive padding on either side of the inner back panel.
- ★ The adhesive for these pads is powerful, but you may require new adhesive if the original begins to fail.

Step 6



- Remove the four 12.5 mm Phillips #2 screws mounting the outer case.
- Slide off the outer case.

Step 7



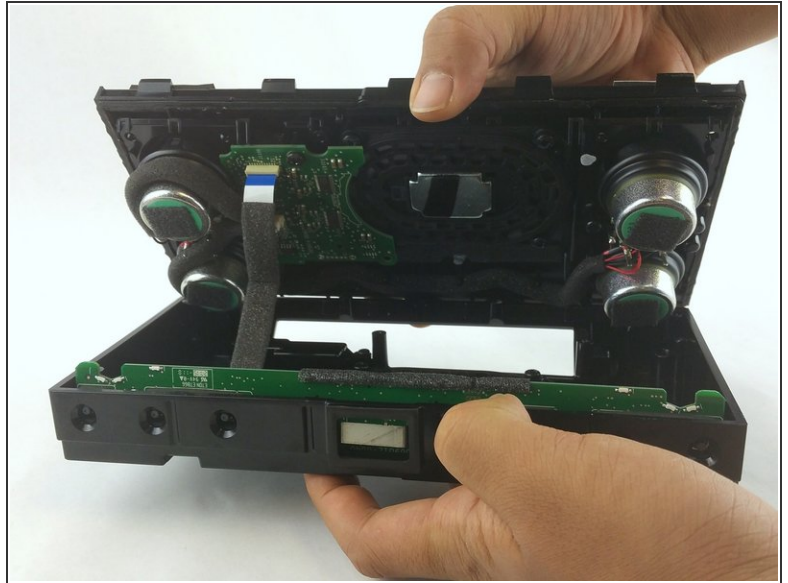
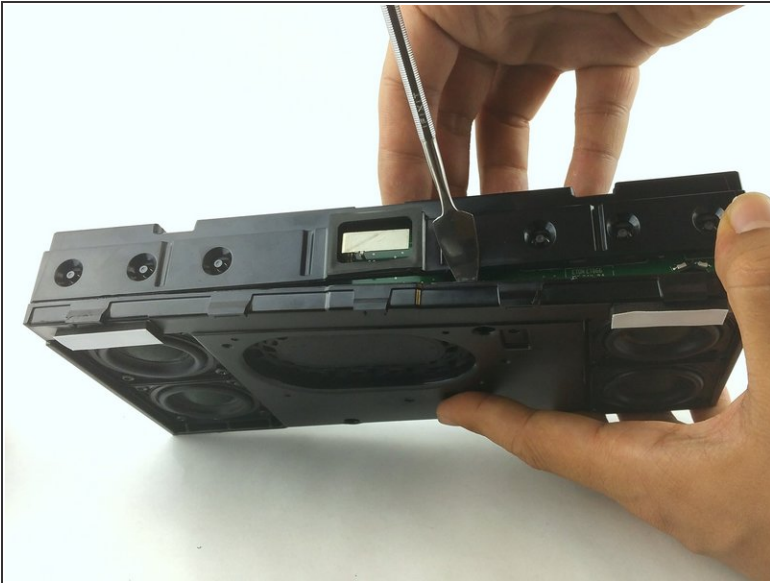
- Remove four screws from each of the four speakers (16 screws total) using a Torx #10 screwdriver.
- ⓘ All screws (excluding the two middle screws on the right side) are 12.5 mm in length. The aforementioned middle screws are 21 mm.

Step 8



- Remove the two 12.5 mm screws which mount the top panel using a Phillips #2 screwdriver.
- Now you should be able to lift the top panel off.

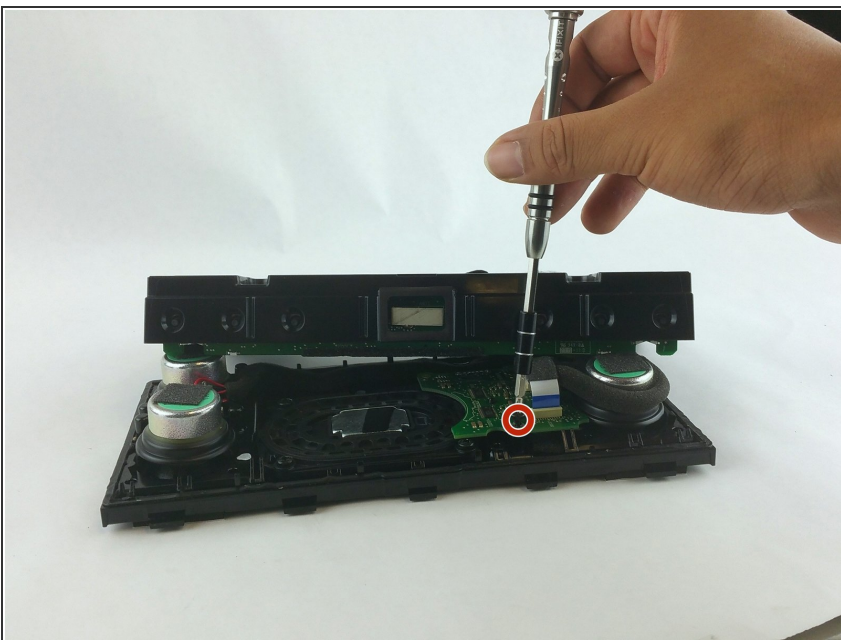
Step 9



- Use a metal spudger to pry the device apart. You must use a metal spudger because of the great force necessary to pry it apart.

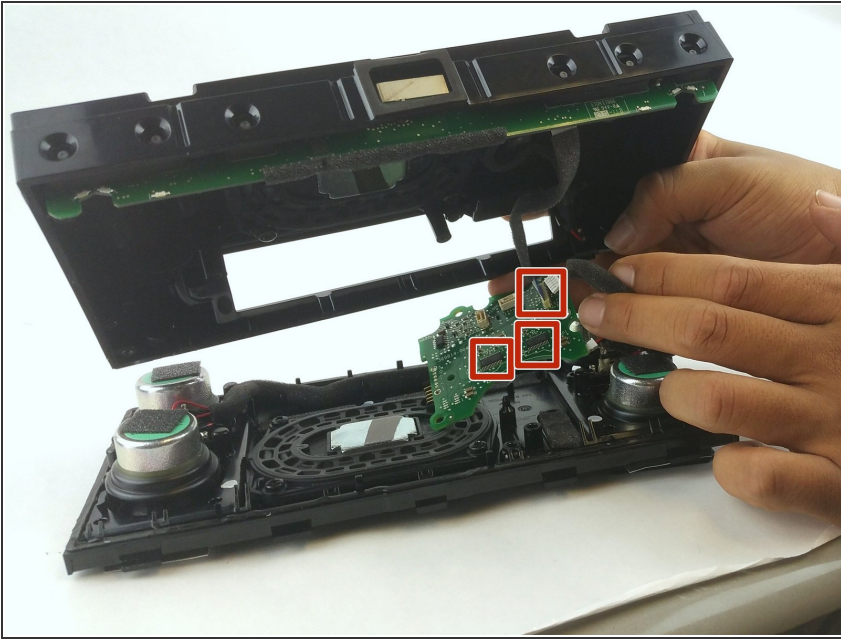
⚠ The circuitry for the buttons on the top panel may be found underneath, so use caution not to damage it.

Step 10



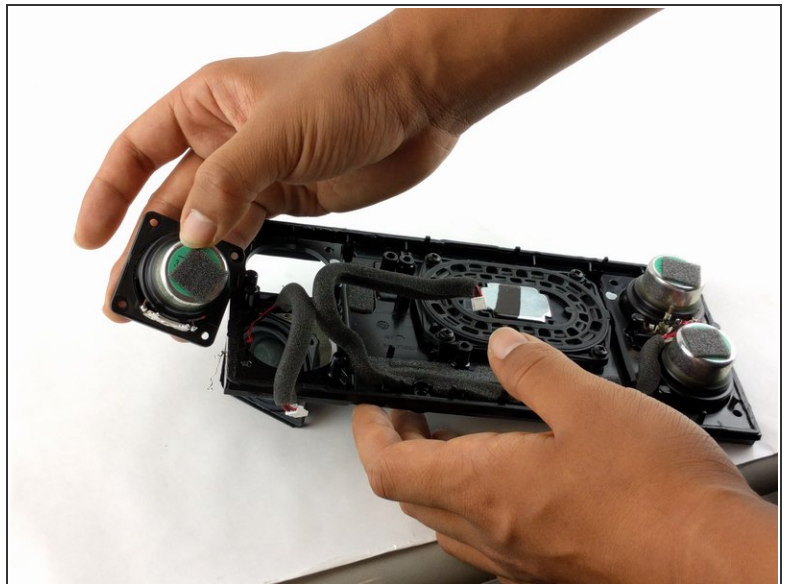
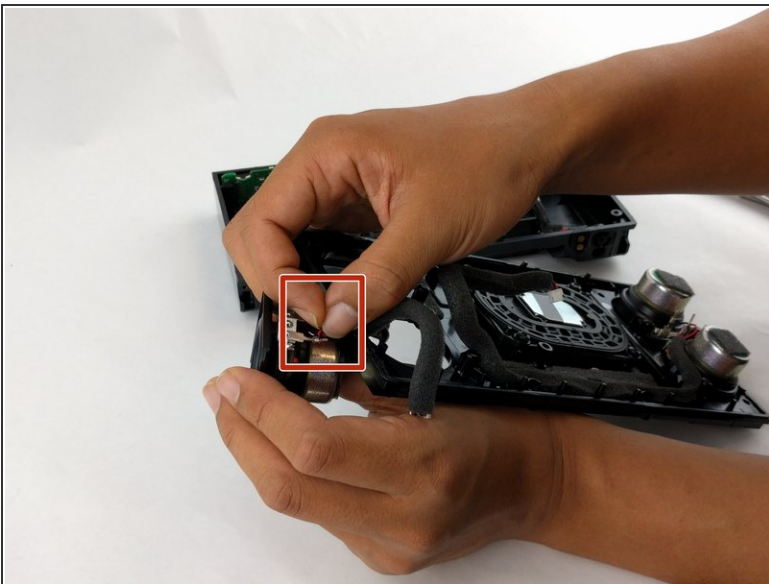
- Remove the 12.5 mm screw mounting the motherboard using a Philips #2 screwdriver.

Step 11



- Gently disconnect the three cables connected to the motherboard.
- Remove the motherboard from the device.

Step 12 — Speakers



- For each of the 4 treble speakers you must uncoil the red wire and black wire in order to remove them.

 You may need metal tweezers in order to re-coil the replacement speaker.

To reassemble your device, follow these instructions in reverse order.